

Supplementary

Therapeutic initiatives based on the baseline cardiac evaluation in Dan-NICAD

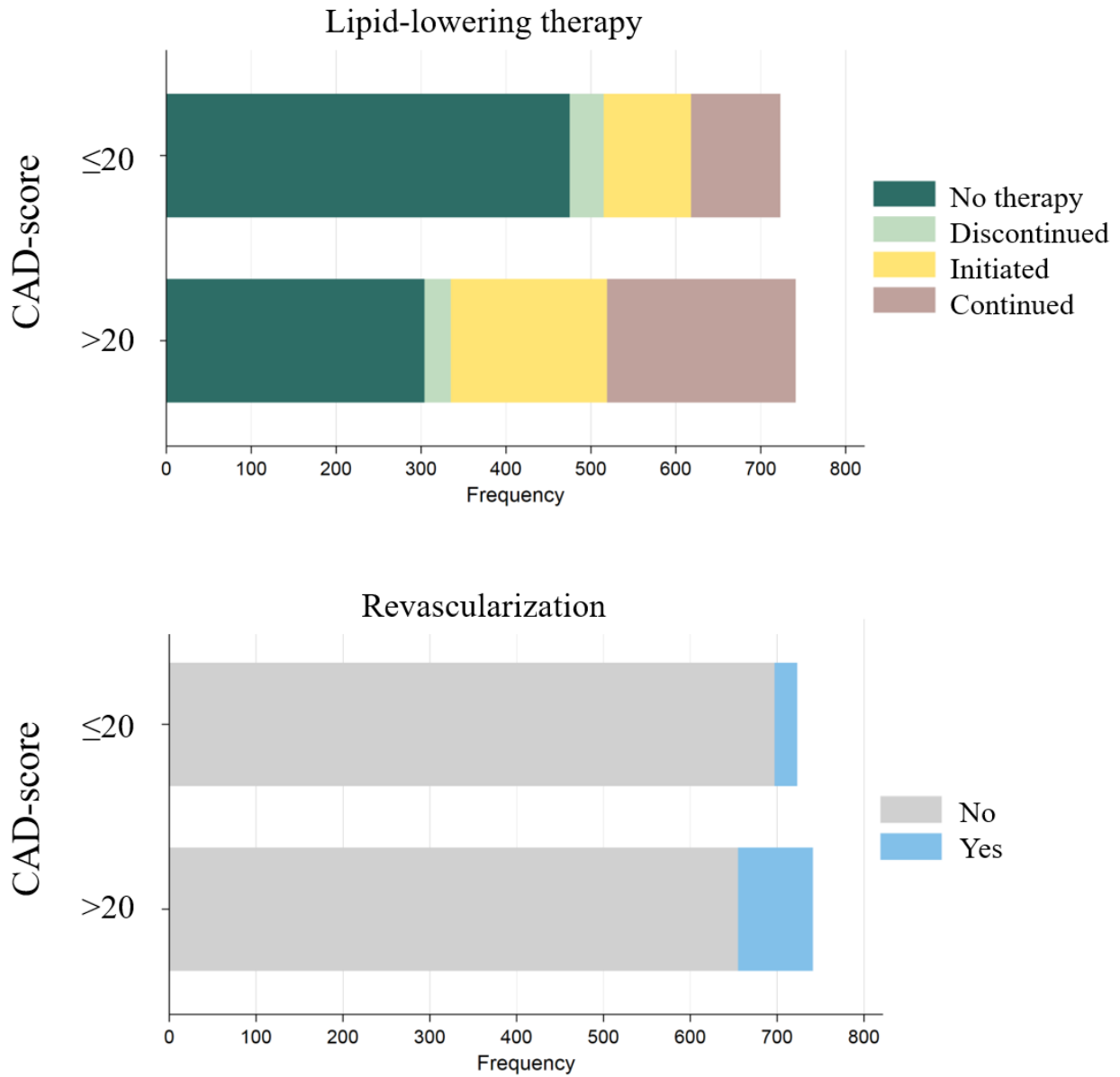


Figure S1

Changes in lipid-lowering therapy and revascularization performed as part of the baseline cardiac evaluation, which might have altered patient prognosis after the acoustic record.

Figure S2, Cumulative incidence rates for the acoustic-score and CAD-score

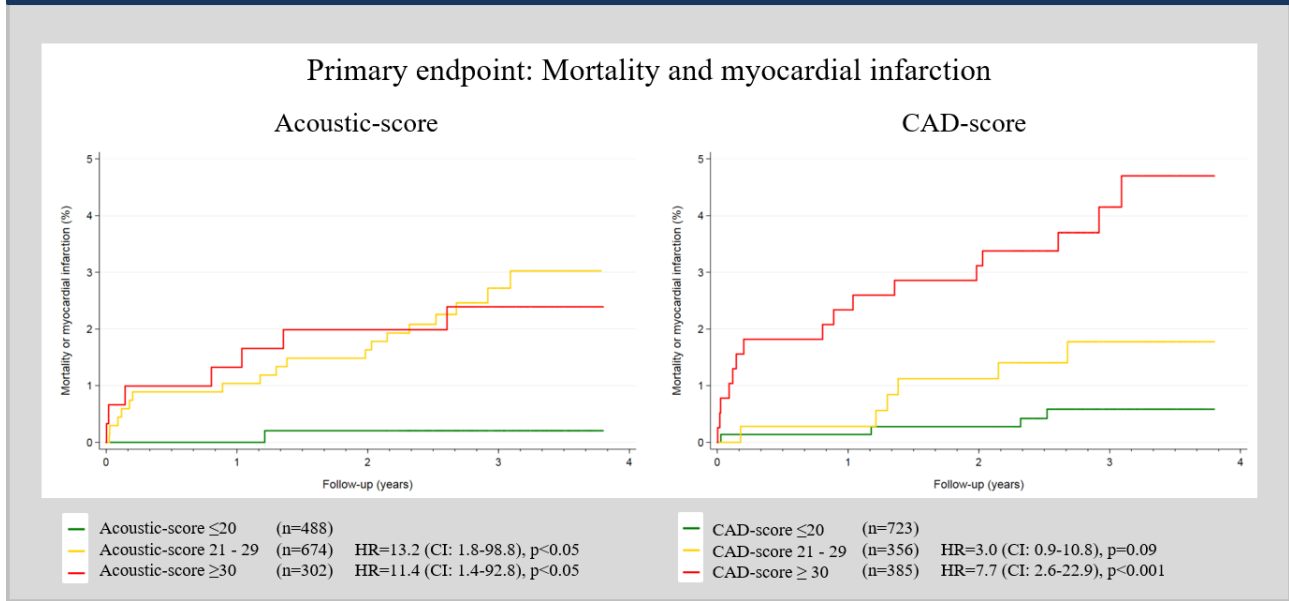


Figure S2, Primary endpoints according to Acoustic-score and CAD-score with a pre-specified cut-offs of ≤ 20 and ≥ 30 .

Figure S3, Cumulative incidence rates for “Worst case scenario” simulation

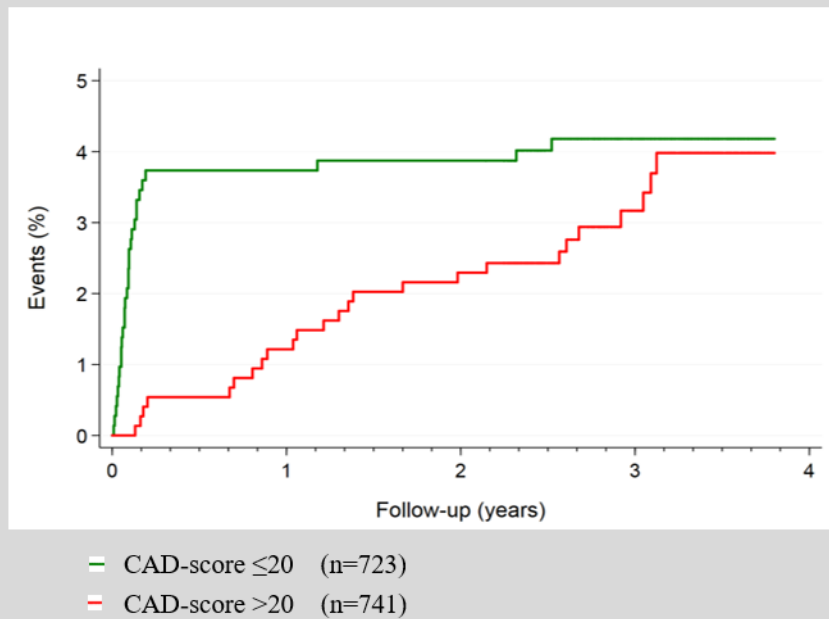


Figure S3, “Worst case scenario” simulating an event in all patients with revascularization as part of the primary baseline cardiac evaluation and with a false negative CAD-score ≤ 20 (n=26). Events is defined as mortality, myocardial infarction, revascularization not part of the primary baseline evaluation, and revascularization as part of the primary cardiac evaluation with CAD-score ≤ 20 .

Table S1, Excluded patient demographics	
Number of patients	211
Characteristic	
Race, Caucasian	208 (98.6%)
Sex, male	97 (46.0%)
Age (years)	57.5 ±8.8
Genetic predisposition*	67 (32.8.%)
Body Mass Index (kg/m ²)	28.1 ±5.3
Abdominal circumference (cm)	96.7 ±13.6
Blood pressure	
- Systolic	138 ±20
- Diastolic	83 ±12
Heart rate [#]	66 ±14
Smoking	
- Never	88 (43.3%)
- Former	78 (38.4%)
- Active	37 (18.2%)
Diabetes	15 (7.4%)
Symptoms	
Typical chest pain	49 (24.5%)
Atypical chest pain	69 (34.5%)
Non-specific	82 (41.0%)
Updated Diamond Forrester score	
- Low risk (<15%)	25 (12.5%)
- Moderate risk (≥15% to 85%)	168 (84.0%)
- High risk (≥85%)	7 (3.5%)
Reasons for missing acoustic CAD-score	
Analysis not performed	16 (7.6%)
Arrhythmia	49 (23.2%)
Too much noise or too weak heart signal	50 (23.6%)
IC4 could not be identified	48 (22.7%)
Device-related problems	29 (13.7%)
Short systolic period	14 (6.6%)
Other	5 (2.4%)

Table S1, Excluded patient demographics and reasons for missing CAD-score. Symptoms and many baseline characteristics were missing in 11 patients. Values are n (%) or mean ±SD or median [IQR].

Table S2, Table of CAD-score and Acoustic-score			
	Acoustic-score ≤ 20	Acoustic-score > 20	Total
CAD-score ≤ 20	342 (23.3%)	381 (26.0%)	723 (49.4%)
CAD-score > 20	146 (10.0%)	595 (40.6%)	741 (50.6%)
Total	488 (33.3%)	667 (66.7%)	1464 (100.0%)

Table S2, 2x2 table with Acoustic-score and CAD-score with a pre-specified cut-off of > 20 . Values are n (%)

Table S3, Description of patients with false negative CAD-score at baseline									
Patient	Age, years	Sex	Chest pain type	Acoustic-score	CAD-score	Diamond-Forrester score	ICA with FFR Core-lab analysis	CABG	PCI
1	44	Female	Atypical	11.3	3.2	13.5	1-vessel disease	No	Yes
2	54	Female	Atypical	12.2	4.6	19.3	2-vessel disease	No	Yes
3	50	Female	Typical	12.4	4.6	41.8	2-vessel disease	Yes	No
4	50	Female	Typical	14.2	5.0	41.8	1-vessel disease	No	Yes
5	46	Female	Atypical	20.4	5.0	14.5	1-vessel disease	No	Yes
6	48	Female	Atypical	21.3	5.3	15.6	1-vessel disease	No	Yes
7	50	Female	Nonspecific	15.3	5.3	9.7	1-vessel disease	No	Yes
8	44	Male	Typical	19.5	7.5	68.0	2-vessel disease	No	Yes
9	46	Female	Atypical	30.9	8.4	14.5	1-vessel disease	No	Yes
10	68	Male	Atypical	10.9	8.9	62.5	1-vessel disease	Yes	No
11	55	Male	Atypical	17.4	9.0	48.9	1-vessel disease	No	Yes
12	44	Male	Nonspecific	24.3	9.3	24.0	2-vessel disease	No	Yes
13	45	Male	Nonspecific	25.0	9.6	24.8	1-vessel disease	Yes	No
14	47	Male	Typical	25.4	9.8	70.7	1-vessel disease	Yes	Yes
15	63	Female	Atypical	22.0	9.8	26.0	No obstructive disease	No	Yes
16	64	Male	Atypical	23.4	15.3	58.4	2-vessel disease	No	Yes
17	64	Male	Nonspecific	23.9	15.5	42.7	1-vessel disease	No	Yes
18	65	Male	Typical	24.9	16.2	83.9	1-vessel disease	No	Yes
19	54	Female	Typical	14.7	16.5	46.0	3-vessel or LM disease	Yes	No
20	52	Male	Typical	32.6	17.1	74.9	Missing	Yes	No
21	42	Female	Typical	22.8	17.8	33.8	2-vessel disease	No	Yes
22	41	Male	Nonspecific	14.2	18.0	21.8	1-vessel disease	No	Yes
23	57	Male	Nonspecific	34.6	18.5	35.5	2-vessel disease	Yes	No
24	53	Female	Atypical	18.7	19.2	18.7	2-vessel disease	No	Yes
25	65	Male	Nonspecific	29.6	19.3	43.7	3-vessel or LM disease	Yes	No
26	55	Male	Typical	36.5	19.9	77.3	1-vessel disease	No	Yes

Table S3, Detailed description of clinical information and imaging characteristics of the patients who were early revascularized as part of the baseline cardiac evaluation and had a CAD-score ≤ 20 .

Table S4, Description of patients with event during follow-up

Patient	Event	Age, years	Sex	Chest pain type	Acoustic-score	CAD-score	Diamond-Forrester score	ICA with FFR Core-lab analysis	CABG	PCI
1	Death	58	Male	Typical	21.5	10.8	79.4	Na	No	No
2	Death	69	Female	Typical	24.8	11.1	61.8	Na	No	No
3	Death	56	Male	Nonspecific	27.2	13.8	34.6	No disease	No	No
4	Death	66	Male	Atypical	26.4	17.2	60.5	No disease	No	No
5	Revasc	50	Female	Typical	20.1	20.3	41.8	3-vessel or LM disease	Yes	No
6	Revasc	44	Male	Atypical	19.2	21.6	37.4	2-vessel disease	Yes	No
7	MI	55	Female	Atypical	23.8	23.0	20.0	1-vessel disease	No	No
8	Death	58	Female	Nonspecific	25.8	24.6	13.1	No disease	No	No
9	Revasc	62	Male	Nonspecific	12.5	26.0	40.6	No disease	No	No
10	Death	74	Female	Typical	18.5	28.6	66.7	3-vessel or LM disease	Yes	No
11	Death	54	Male	Nonspecific	22.0	28.6	32.6	No disease	No	No
12	Death	55	Male	Typical	22.6	29.2	77.3	1-vessel disease	No	No
13	Revasc	73	Female	Atypical	19.2	29.2	35.1	No disease	No	No
14	Death	62	Female	Atypical	26.1	29.8	25.2	No disease	No	No
15	Death	51	Male	Nonspecific	24.4	30.6	29.9	1-vessel disease	No	No
16	Death	58	Female	Atypical	34.3	31.4	22.1	No disease	No	No
17	MI*	51	Male	Atypical	25.9	31.8	44.6	3-vessel or LM disease	Yes	No
18	MI*	53	Male	Atypical	27.7	33.2	46.7	1-vessel disease	No	No
19	MI	56	Male	Atypical	28.2	33.7	49.9	No disease	No	No
20	Death	54	Male	Nonspecific	29.2	34.5	32.6	No disease	No	No
21	MI*	71	Female	Typical	26.5	35.0	63.8	3-vessel or LM disease	Yes	No
22	MI	63	Male	Typical	25.3	36.3	82.7	2-vessel disease	No	Yes
23	MI	78	Female	Typical	28.9	36.9	70.4	2-vessel disease	No	Yes
24	Revasc	63	Male	Typical	28.5	38.7	82.7	No disease	No	No
25	MI	49	Male	Typical	42.1	39.7	72.5	1-vessel disease	No	Yes
26	Death	71	Male	Typical	24.3	40.2	87.1	Na	No	No
27	MI	62	Male	Nonspecific	32.0	41.2	40.6	No disease	No	No
28	MI	67	Male	Typical	34.6	43.1	85.0	3-vessel or LM disease	Yes	No
29	Revasc	73	Male	Nonspecific	30.0	44.0	52.2	3-vessel or LM disease	Yes	No
30	Death	68	Male	Atypical	37.5	44.9	62.5	1-vessel disease	No	Yes
31	Death	65	Male	Atypical	40.5	46.6	59.4	3-vessel or LM disease	Yes	No
32	Death	53	Male	Typical	49.5	48.2	75.7	1-vessel disease	Yes	No

Table S4, Detailed description of clinical information and imaging characteristics of the patients had events, death, myocardial infarction , or late revascularization, during follow-up.

* Late revascularization also performed.

MI: Myocardial infarction, Revasc: Late revascularization.