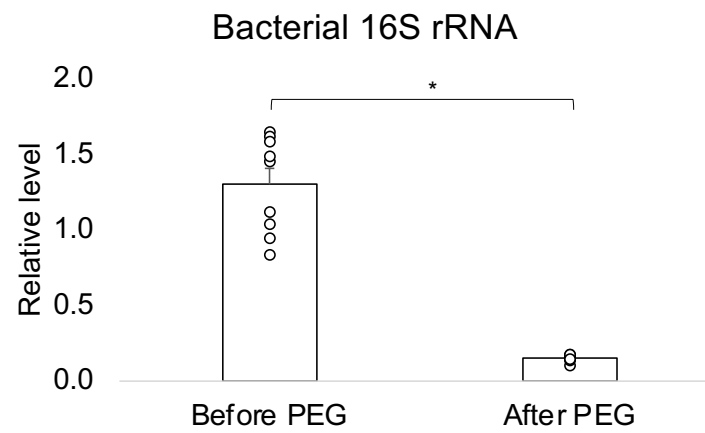


Supplemental Figures

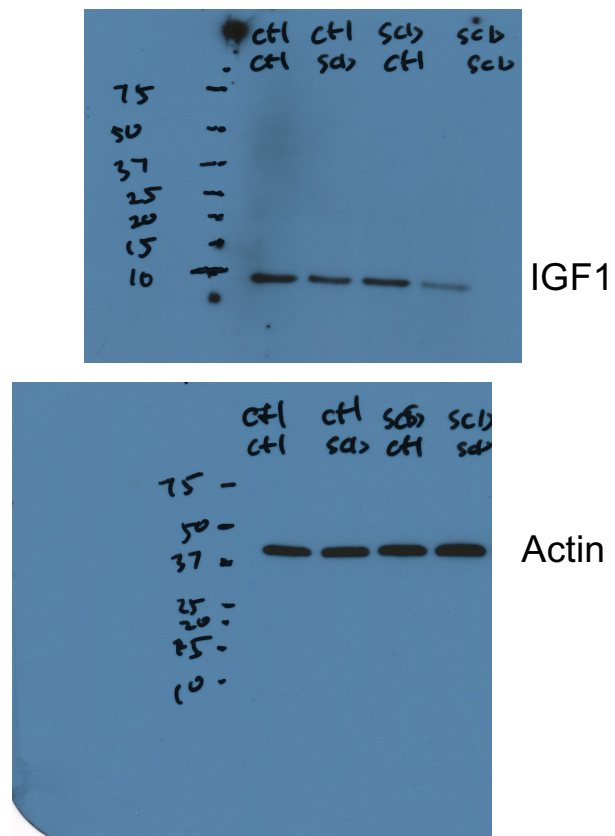
Bone Loss is Ameliorated by Fecal Microbiota Transplantation through SCFA/GPR41/ IGF1 Pathway in Sickle Cell Disease Mice

Liping Xiao¹ *, Yanjiao Zhou¹, Suresh Bokoliya¹, Qingqi Lin¹, Marja Hurley¹

¹Department of Medicine, School of Medicine, UConn Health, Farmington, CT, 06030, USA



Supplemental Figure 1. Decreased bacterial load after PEG treatment in Ctrl mice. n=9 mice/group. Data are Mean±SE. * p <0.05 by T test.



Supplemental Figure 2. Uncropped Western blots for Figure 7E.