

	Overall (n=5,968)	Included in the analysis (n=1,635)
Age group		
17-34	2,162 (36.6%)	457 (28.0%)
35-54	2,509 (42.5%)	723 (44.2%)
55-77	1,232 (20.9%)	455 (27.8%)
Sex		
Female	4,594 (77.8%)	1,344 (82.2%)
Male	1,298 (22.0%)	290 (17.7%)
Other	11 (0.2%)	1 (0.1%)
Ethnicity		
White	3,623 (60.7%)	1,169 (71.5%)
Asian	1,479 (24.8%)	304 (18.6%)
Black	339 (5.7%)	50 (3.1%)
Mixed	137 (2.3%)	36 (2.2%)
Other	176 (2.9%)	55 (3.4%)
Not stated	214 (3.6%)	21 (1.3%)
Role		
Administrative Staff	912 (15.4%)	245 (15.0%)
Doctor	920 (15.6%)	106 (6.5%)
Laboratory Staff	138 (2.3%)	61 (3.7%)
Medical or nursing Student	65 (1.1%)	12 (0.7%)
Nurse/HCA	2,602 (44.1%)	779 (47.6%)
Other	959 (16.2%)	331 (20.2%)
Porter/Domestic	138 (2.3%)	31 (1.9%)
PT/OT/SLT	169 (2.9%)	70 (4.3%)
BMI		
<16	11 (0.2%)	3 (0.2%)
16-24.9	2,696 (45.2%)	698 (42.7%)
25-29.9	1,939 (32.5%)	517 (31.6%)
30-34.9	829 (13.9%)	261 (16.0%)
35-39.9	295 (4.9%)	85 (5.2%)
40+	198 (3.3%)	71 (4.3%)
Comorbidity		
No	3,336 (55.9%)	872 (53.3%)
Yes	2,632 (44.1%)	763 (46.7%)
Smoking	412 (6.9%)	106 (6.5%)
Pregnant	396 (6.6%)	23 (1.4%)
Asthma	939 (15.7%)	316 (19.3%)
Hypertension	478 (8.0%)	176 (10.8%)
Thyroid disorder (excluding malignancy)	390 (6.5%)	137 (8.4%)
Diabetes	314 (5.3%)	95 (5.8%)
Immunosuppression	216 (3.6%)	80 (4.9%)
Psoriasis	146 (2.4%)	48 (2.9%)
Heart disease	117 (2.0%)	34 (2.1%)

Non-haematological malignancy	112 (1.9%)	41 (2.5%)
Rheumatological disorder	111 (1.9%)	27 (1.7%)
Respiratory disease (excluding asthma)	98 (1.6%)	37 (2.3%)
Haematological disease (excluding malignancy)	90 (1.5%)	36 (2.2%)
Liver disease	40 (0.7%)	11 (0.7%)
Neurological disorder	40 (0.7%)	12 (0.7%)
CKD stage 3, 4 or 5	26 (0.4%)	6 (0.4%)
Lupus	20 (0.3%)	7 (0.4%)
Splenic disorder (excluding traumatic splenectomy)	14 (0.2%)	4 (0.2%)
Haematological malignancy	12 (0.2%)	3 (0.2%)
Organ transplant	10 (0.2%)	5 (0.3%)
Vaccine combination		
ChAdOx1/ChAdOx1	678 (23.5%)	387 (23.7%)
BNT162b2/BNT162b2	2,164 (75.2%)	1,234 (75.5%)
Other	37 (1.3%)	13 (0.8%)
COVID-age score		
Low	3,433 (59.9%)	769 (47.9%)
Medium	1,867 (32.6%)	696 (43.3%)
High	366 (6.4%)	120 (7.5%)
Very high	65 (1.1%)	22 (1.4%)

Table S1. Comparison of characteristics between the overall population (HCWs with serological data) and the cohort included in the analysis (HCWs with anti-spike IgG measurement 14-84 days post-second vaccination dose). OT/PT/SLT: occupational therapist, physiotherapist, and speech and language therapist. HCA: healthcare assistant.

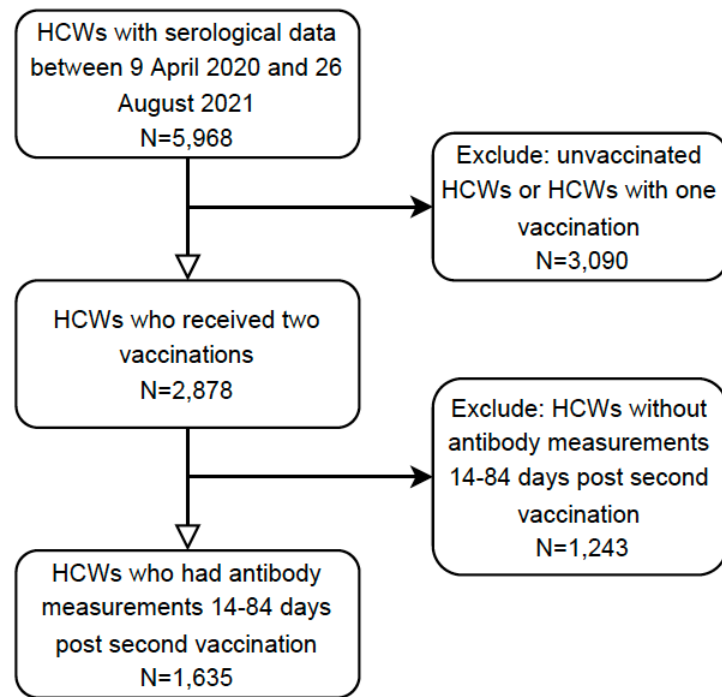


Figure S1. Participants inclusion flowchart.

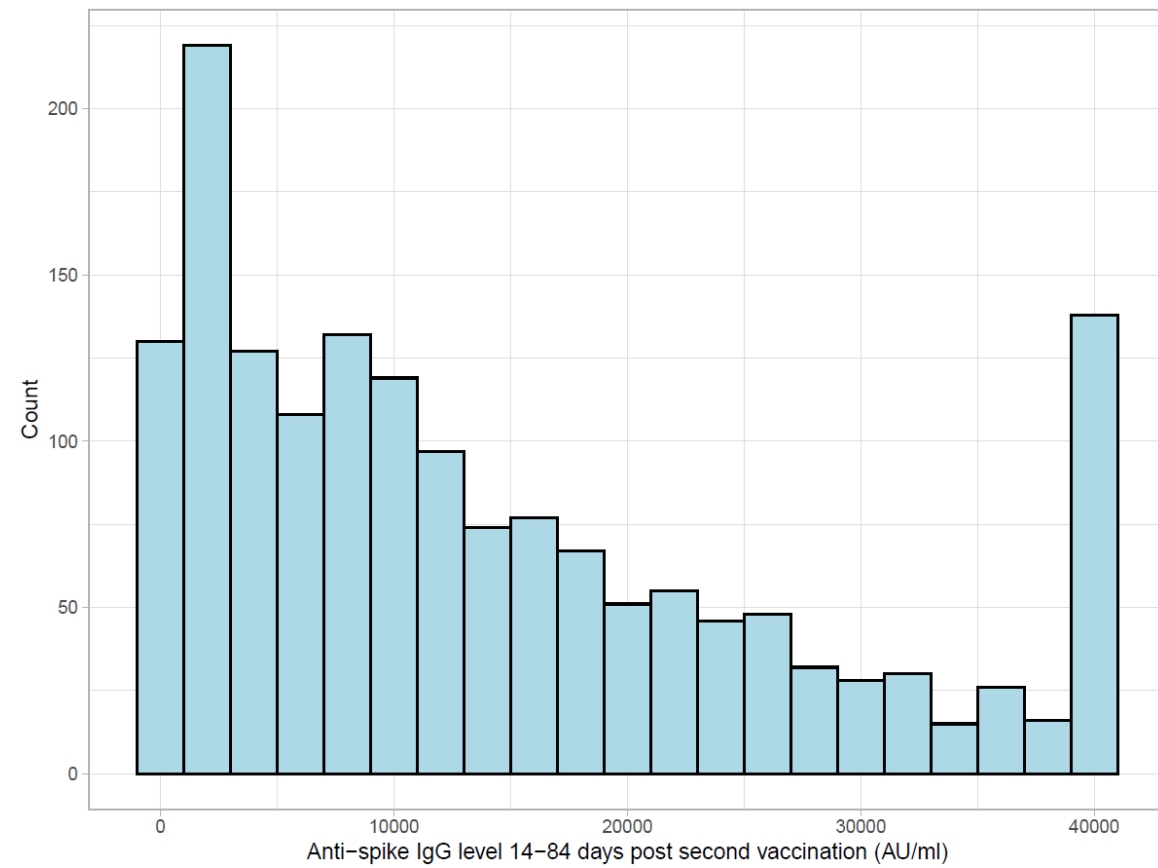


Figure S2. Distribution of peak anti-spike IgG levels 14-84 days post-second vaccination in 1635 HCWs.