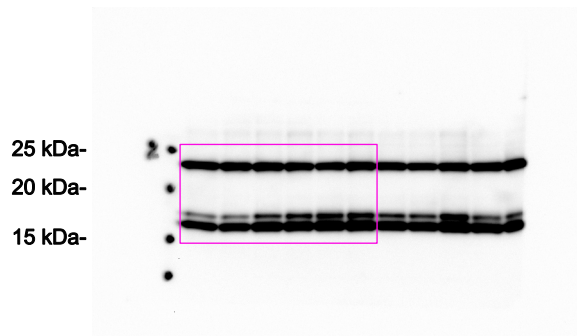


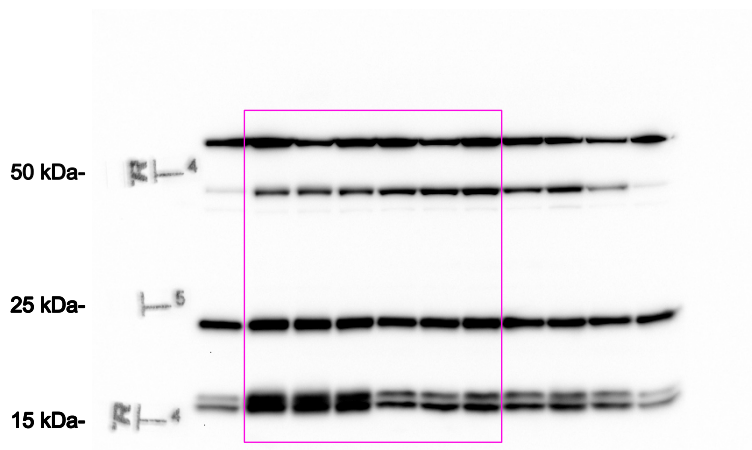
Additional file 3

Mouse liver WAM-enriched fractions (8 µg/lane)



W.B. #1
anti-MnSOD 1:10,000
anti-Synj2bp 1:3,000

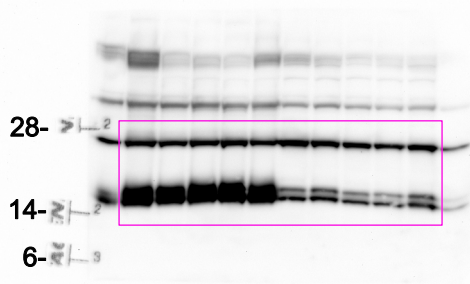
Mouse liver WAM-enriched fractions (10 µg/lane)



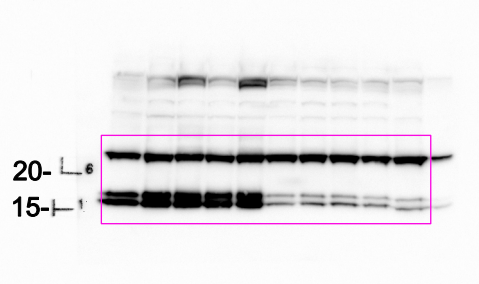
W.B. #2
anti-Aif 1:1,500
anti-Erp44 1:1,000
anti-MnSOD 1:14,000
anti-Synj2bp 1:1,000

Additional file 3

Mouse liver heavy membranes (40 µg/lane)

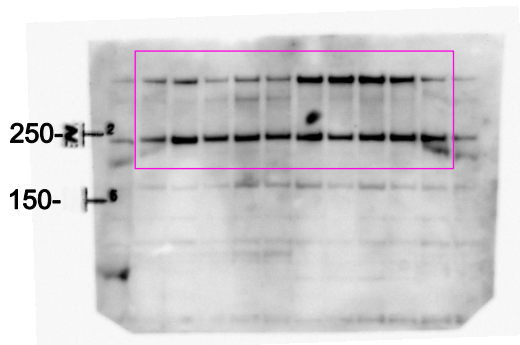


W.B. #3
anti-MnSod 1:7,000
anti-Synj2bp 1:750

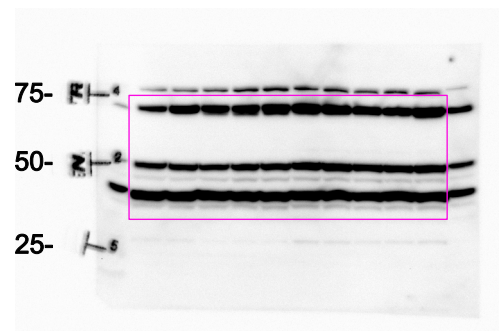


W.B. #4
anti-MnSod 1:7,000
anti-Synj2bp 1:750

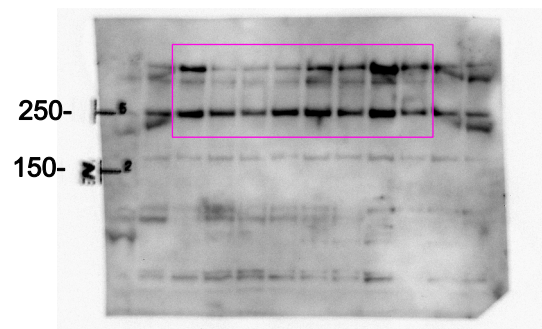
Mouse liver lysate (20 µg/lane)



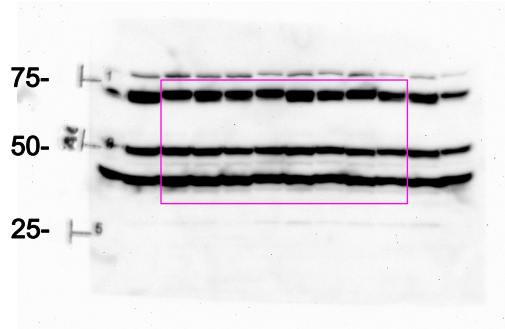
W.B. #5
anti-ApoB 1:2,000



W.B. #6
anti-Calnexin 1:18,000
anti-Calreticulin 1:120,000
anti-Actin 1:15,000



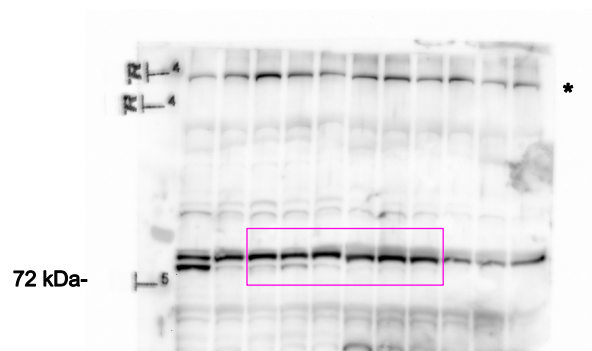
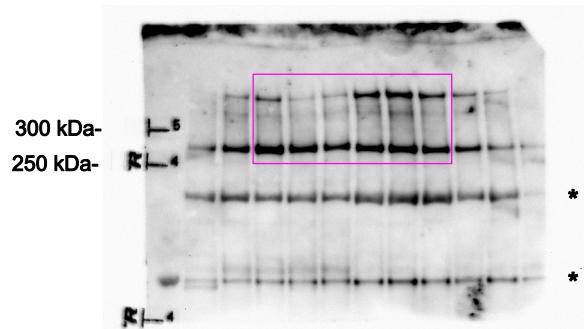
W.B. #7
anti-ApoB 1:2,000



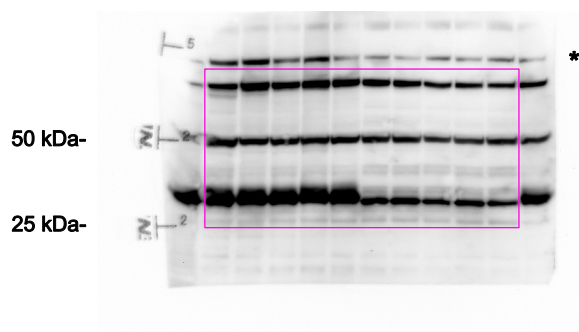
W.B. #8
anti-Calnexin 1:18,000
anti-Calreticulin 1:120,000
anti-Actin 1:15,000

Additional file 3

Mouse liver heavy membranes (20 µg/lane)

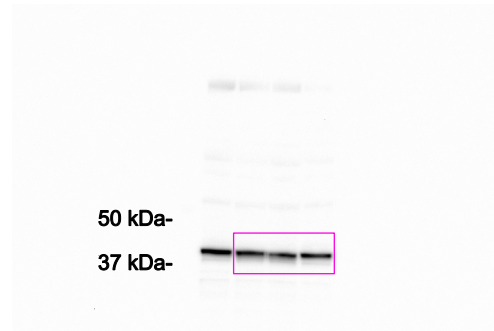
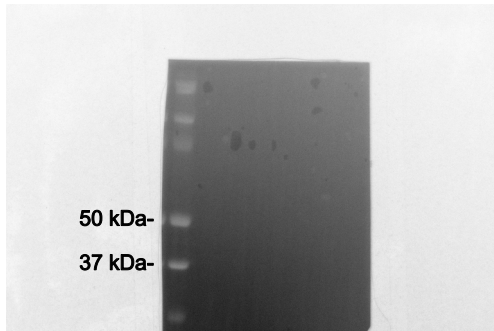


Mouse liver heavy membranes (20 µg/lane)

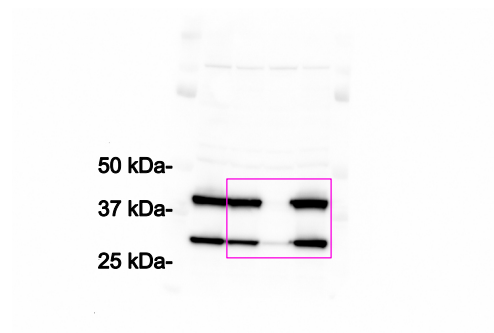
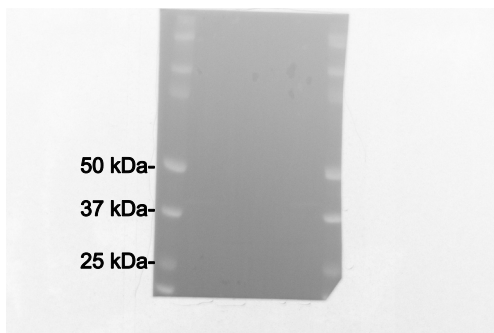


Additional file 3

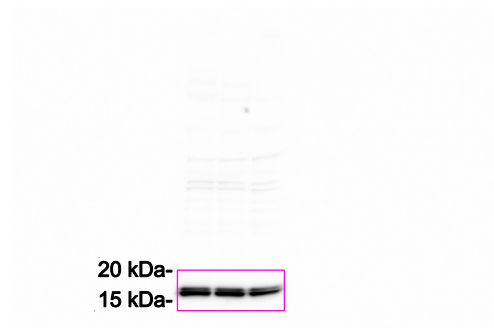
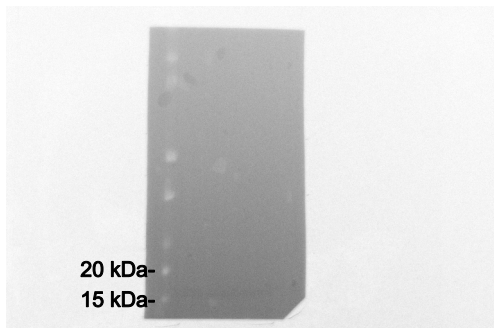
Mouse liver heavy membranes (15 µg/lane)



W.B. #12
anti-Pdh 1:2,000



W.B. #13
anti-phospho Pdh 1:2,000
anti-phospho S6 1:3,000



W.B. #14
anti-Synj2bp 1:750