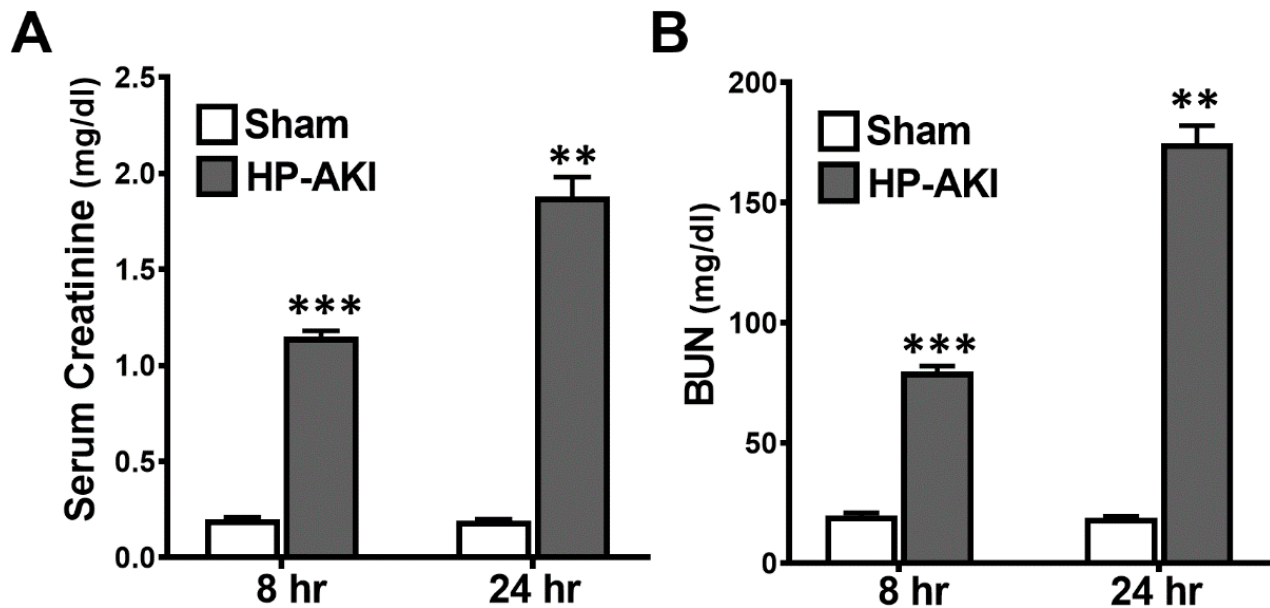


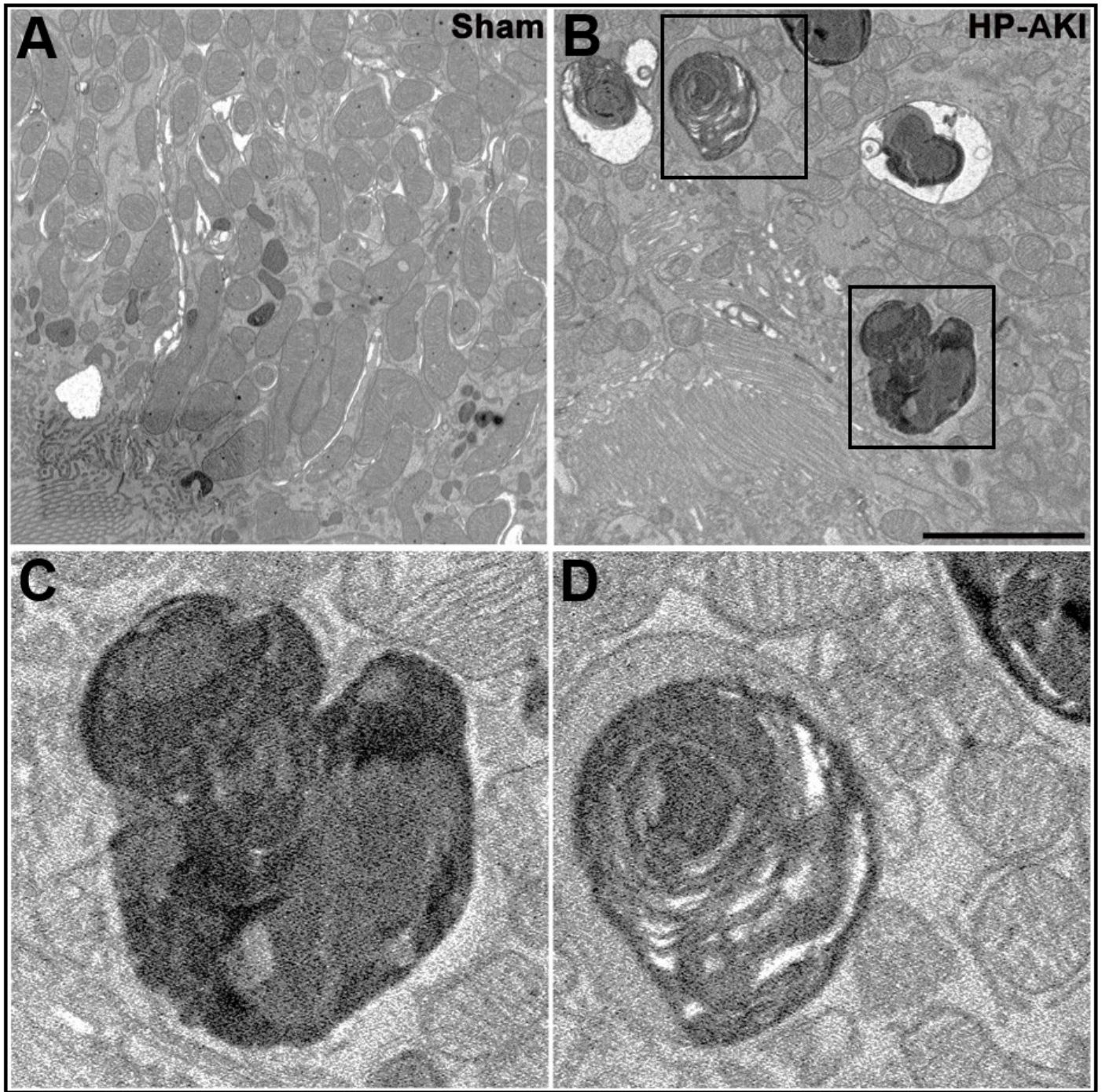
## Supplementary Data

### Supplementary Figure Legends:

**Supplementary Figure 1: Renal function in sham and HP-AKI mice.** Serum creatinine (A) and BUN (B) levels were significantly increased at 8 and 24 hours after HP-AKI compared to sham mice. n=8 and n=10 in sham and HP-AKI groups, respectively, at 8 hours, and n=5 in each group at 24 hours; \*\*\*P<0.001 and \*\*P<0.01 vs sham group.



**Supplementary Figure 2: Mitophagy in renal proximal tubules of HP-AKI mice.** Electron microscopy revealed increased mitophagy in renal proximal tubule epithelial cells at 8 hours after HP-AKI (**B**) compared with proximal tubules of sham mice (**A**). **Panels C and D** are higher magnification of the insets in **B**, showing mitophagic structures in HP-AKI proximal tubules. Scale bar=5  $\mu$ m.



**Supplementary Figure 3: Mitochondrial ultrastructure in renal proximal tubules of sham and HP-AKI mice using transmission electron microscopy (TEM).** TEM of renal proximal tubule epithelial cells at 24 hours after HP-AKI (**right panel**) revealed relatively rounded mitochondria exhibiting disorganized cristae (black arrows indicate disorganized cristae) compared to elongated mitochondria with normal morphology in sham mice (**left panel**). In addition, mitochondria in proximal tubules after HP-AKI revealed amorphous densities indicative of irreversible cell injury. Scale bar=5  $\mu$ m

