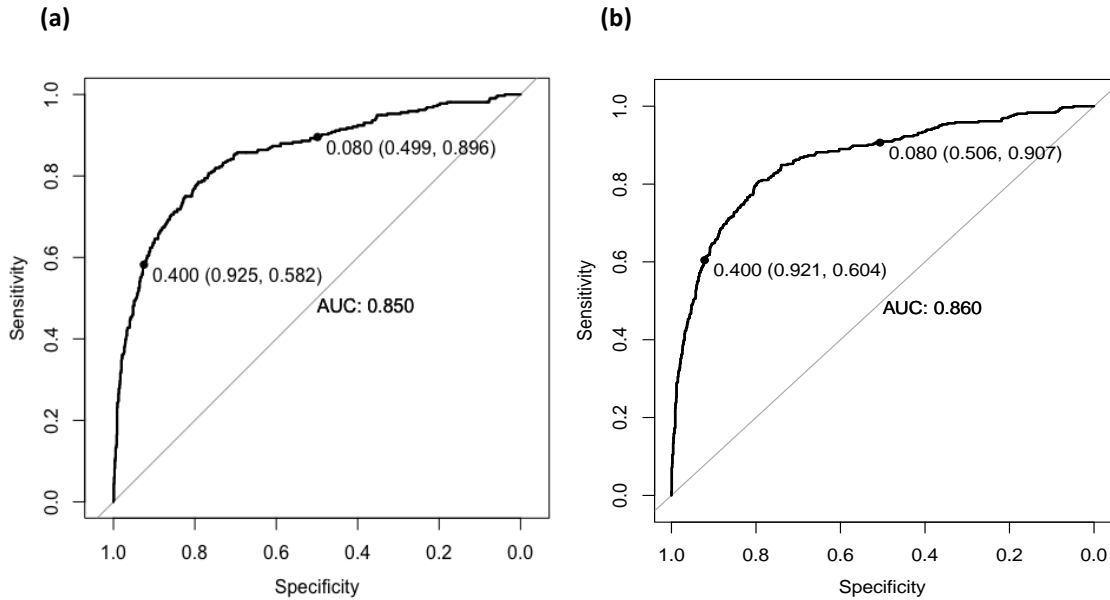


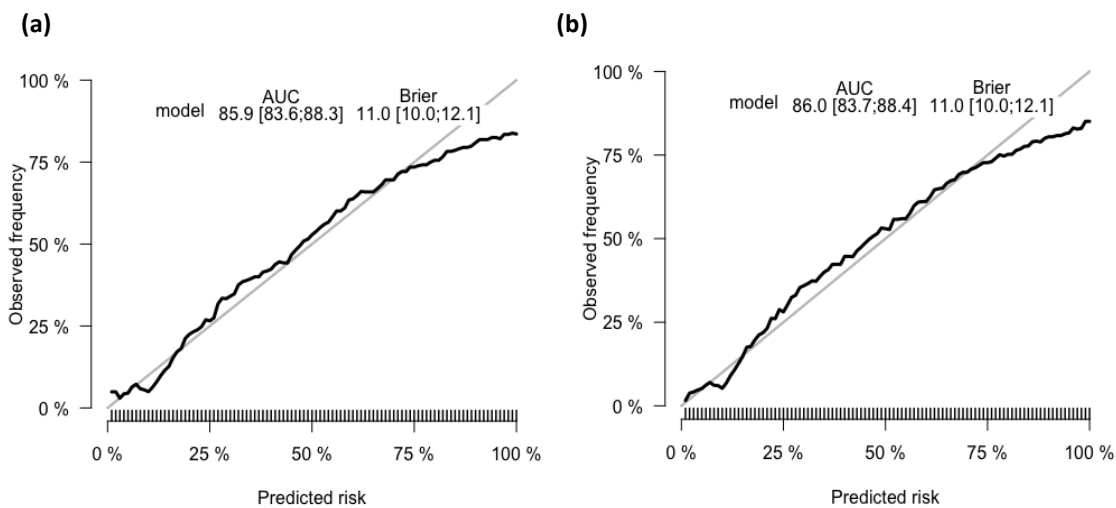
**Supplementary Figures S4: Model performance in selected sub-cohorts.**

**Figure 1: Cross validated receiver operating characteristic curve of the triage model in the (a) under 5 cohort and (b) the entire cohort.**



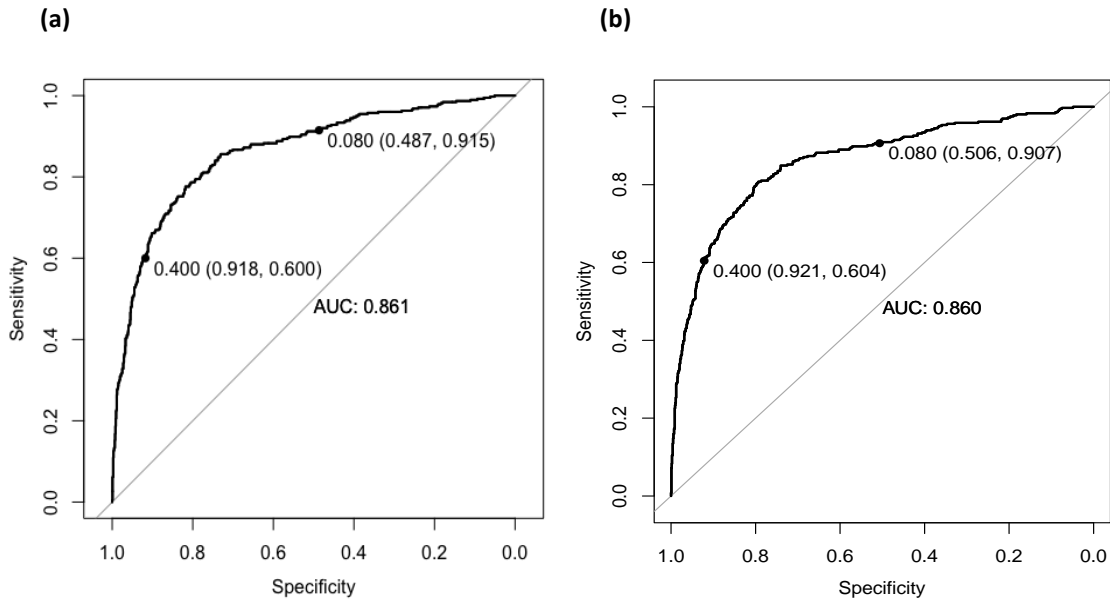
Points represent low risk (8%) and high risk (40%) thresholds. AUC, area under the curve.

**Figure 2: Calibration plot of the triage model for (a) the under 5 cohort and (b) the entire cohort.**



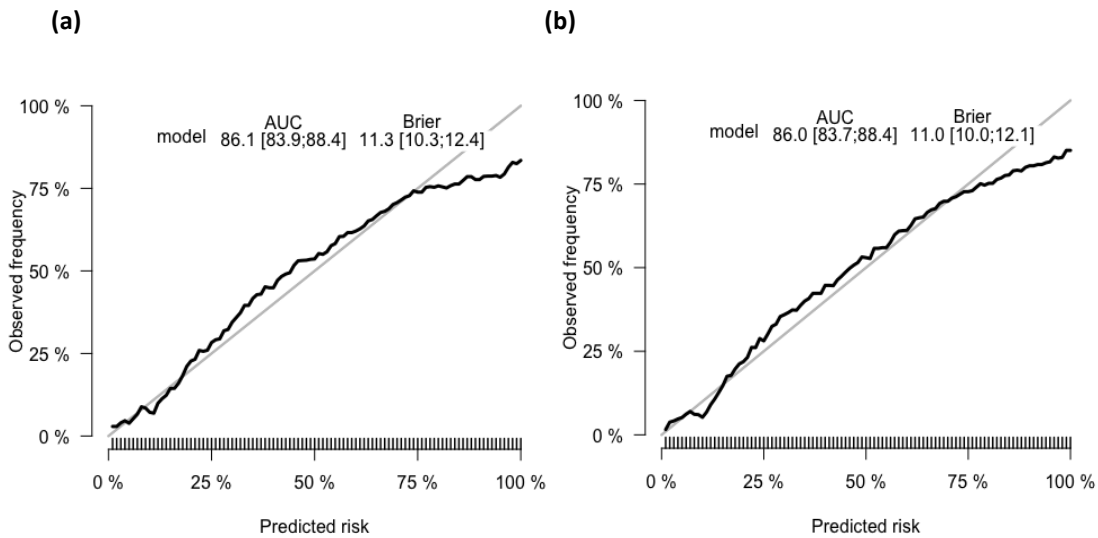
The 45-degree straight line corresponds to the line of perfect calibration on which model predicted risks coincide with the observed frequency. AUC, area under the curve (%); Brier, Brier score (%).

**Figure 3: Cross validated receiver operating characteristic curve of the triage model with outcomes defined as (a) hospital admission (b) hospital admission > 24 hours OR readmission within 48 hours.**



Points represent low risk (8%) and high risk (40%) thresholds. AUC, area under the curve.

**Figure 4: Calibration plots of the triage model with outcomes defined as (a) hospital admission (b) hospital admission > 24 hours OR readmission within 48 hours.**



The 45-degree straight line corresponds to the line of perfect calibration on which model predicted risks coincide with the observed frequency. AUC, area under the curve (%); Brier, Brier score (%).