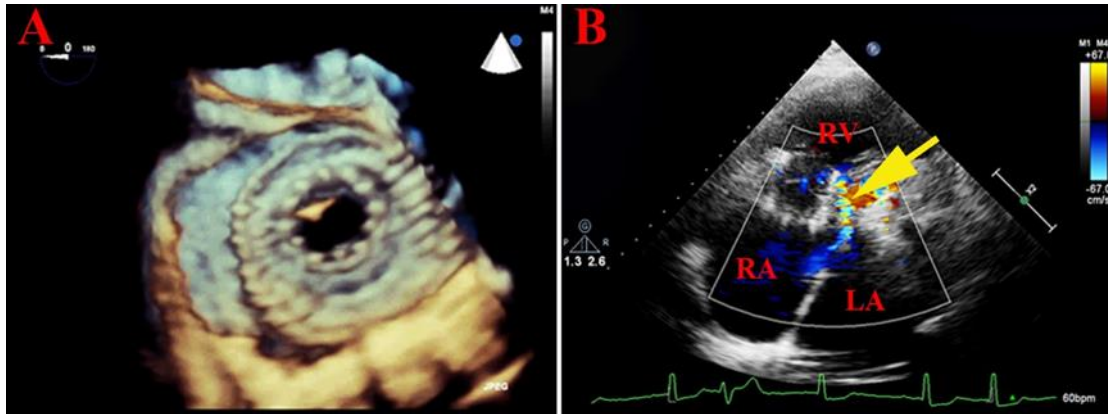


Supplementary data



Supplementary Figure 1. One patient with mild paravalvular regurgitation post procedure (patient #5).

A) Three-dimensional TEE showed a normal position of the prosthetic TV.

B) Doppler echocardiography revealed mild paravalvular regurgitation and normal transvalvular gradient at three-month follow-up.

LA: left atrium; RA: right atrium; RV: right ventricle

Supplementary Table 1. The types of artificial tricuspid valve.

Model	Stent diameter (mm)	Support section length (mm)	Valve height (mm)	Total length (mm)	Annulus size range (CTA)
JS/TTVI-24-30	24	30	13	50	25-35
JS/TTVI-26-30	26	30	14	50	25-35
JS/TTVI-28-40	28	40	15	60	35-45
JS/TTVI-28-50	28	50	15	70	35-45
JS/TTVI-28-55	28	55	15	75	45-50
JS/TTVI-30-40	30	40	16	60	35-45
JS/TTVI-30-50	30	50	16	70	35-45
JS/TTVI-30-55	30	55	16	75	45-50