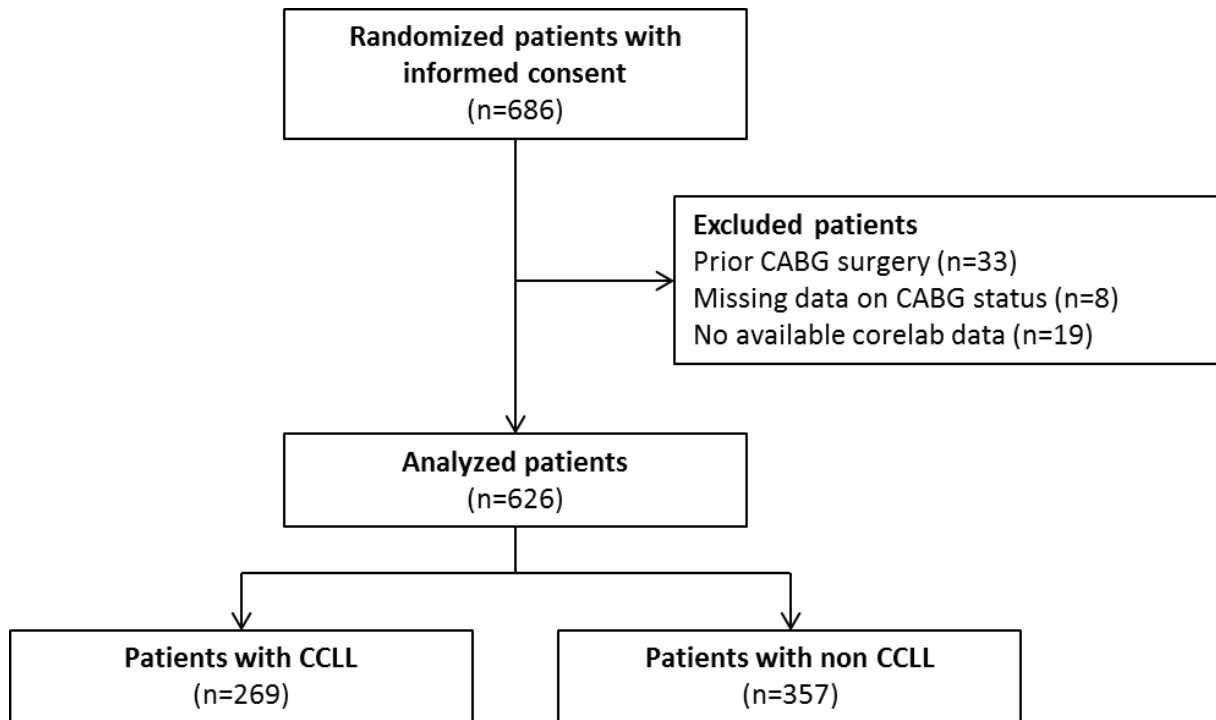
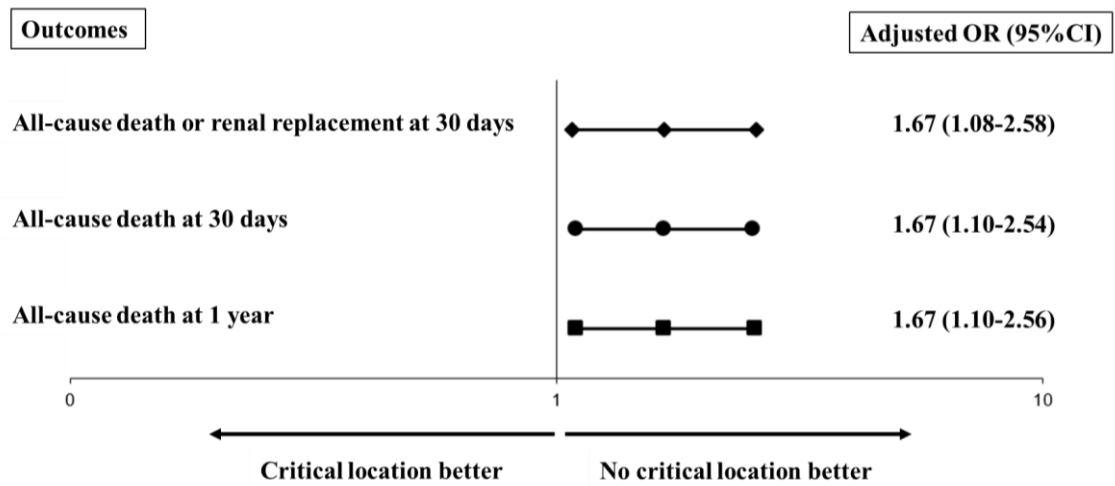


Supplementary data

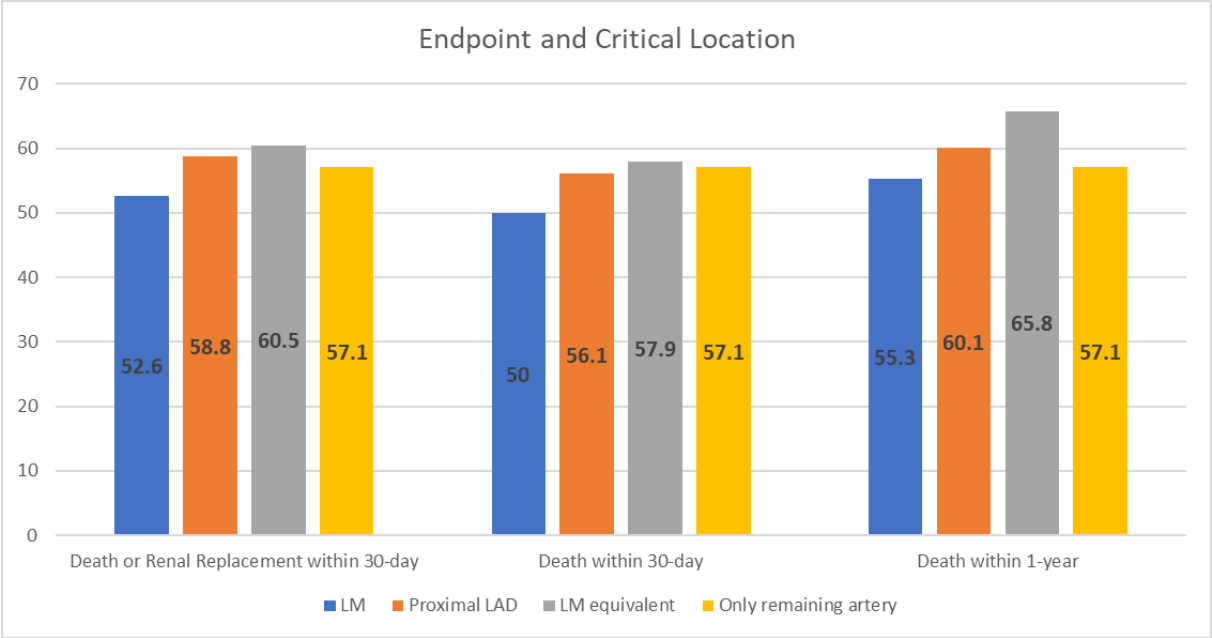


Supplementary Figure 1. Flow chart.

CABG: coronary artery bypass graft; CCLL: critical culprit lesion location



Supplementary Figure 2. Early and late outcomes according to critical culprit lesion location adjusted for revascularisation strategy (covariates of adjustment are detailed in Supplementary Table 1).



Supplementary Figure 3. Early and late outcomes according to individual critical culprit lesion location (covariates of adjustment are detailed in Supplementary Table 1).

Supplementary Table 1. Variables associated with outcomes in univariate analysis.

	30-day death or RRT	30-day death	1-year death
Age (years)	<0.0001	<0.0001	<0.0001
Sex	0.2825	0.1008	0.2509
Body mass index (kg/m ²)	0.1440	0.2692	0.2717
Smoking status	<0.0001	<0.0001	<0.0001
Hypertension	0.7963	0.9924	0.7383
Hypercholesterolaemia	0.0002	<0.0001	0.0011
Diabetes mellitus	0.0090	0.0435	0.0010
Prior myocardial infarction	0.9805	0.8523	0.3563
Prior stroke	0.1869	0.2659	0.0834
Known peripheral artery disease	0.5829	0.6985	0.6242
Known renal insufficiency	0.0254	0.0179	0.0208
Prior percutaneous coronary intervention	0.1940	0.1067	0.5301
Arterial lactate >2 mmol/l	0.0082	0.0086	0.0080
Fibrinolysis before randomisation	0.7033	0.6807	0.1079
Resuscitation before randomisation	0.6553	0.7716	0.7468
Anterior ST-segment elevation	0.2891	0.3710	0.4214
At least one CTO	0.0100	0.0077	0.0203
Femoral access	0.0064	0.0105	0.0199

Stent in culprit lesion	0.0010	0.0009	0.0004
Mechanical circulatory support	<0.0001	<0.0001	<0.0001
Mild hypothermia	0.4612	0.8999	0.9053
Mechanical ventilation	<0.0001	<0.0001	<0.0001
Catecholamine therapy	<0.0001	<0.0001	<0.0001
Post-PCI TIMI flow 3	0.0007	0.0002	0.0007
Baseline SYNTAX score	<0.0001	<0.0001	<0.0001
Randomised coronary revascularisation strategy	0.0254*	0.0639*	0.0943*
Effective coronary revascularisation strategy	0.0250**	0.1092**	0.1377**

Grey cells are covariates of adjustment ($p < 0.2$).

* Covariate of adjustment for primary analysis.

** Covariate of adjustment for sensitivity analysis.

RRT: renal replacement therapy