

Supplementary Materials
Molecular Biology of the Cell
Huebner and Wallingford

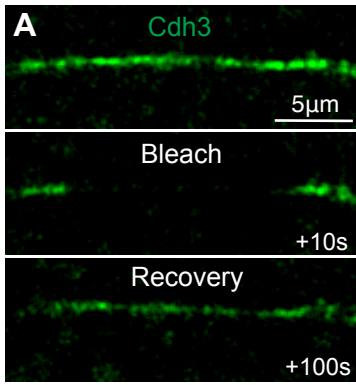
Supplemental figure legends

Supplemental Figure 1: Cdh3 turnover is not changed in the presence of Xdd1

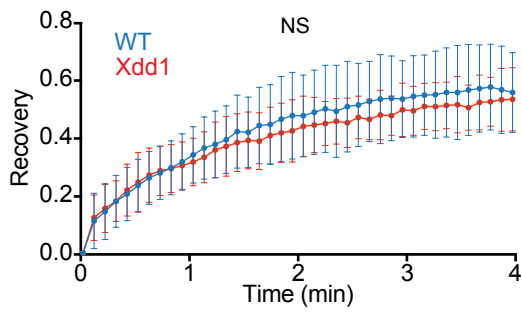
- A.** Time series of a single junction labeled with Cdh3 that is bleached and then allowed to recover.
- B.** Graph showing the bleach recovery for Cdh3 in control cells or cells expressing Xdd1. Conditions were statistically compared using a Kolmogorov-Smirnov test and were not significantly different.
- C.** Graph comparing the recovery halftime of Cdh3 for control or Xdd1 expressing cells. Conditions were not significantly different as assessed by a Mann Whitney test.
- D.** Graph comparing the mobile fraction of Cdh3 for control and Xdd1 expressing cells. Conditions were compared using a Mann Whitney test and there was no significant difference.

Supplemental figure 2: Negative controls for cluster analysis.

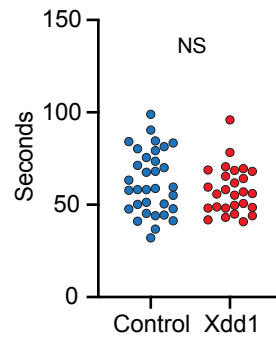
- A.** Still frame from a time lapse movie labeled with a membrane marker shown in blue. Teal lines highlight the junction that is displayed as a kymograph in Supp. Fig.2A'.
- A'.** Kymograph showing the membrane marker over a 400 second time interval.
- A''.** Time smoothed kymograph of the image shown in Supp. Fig.2A'
- A'''.** Kymograph of the membrane marker after thresholding and converting to objects.
- B.** Still frame from a time lapse movie of the Cdh3-cis-mutant shown in green. Blue lines highlight the junction that is displayed as a kymograph in Supp. Fig.2B'.
- B'.** Kymograph showing the Cdh3-cis-mutant over a 400 second time interval.
- B''.** Time smoothed kymograph of the image shown in Supp. Fig.2B'
- B'''.** Kymograph of the Cdh3-cis-mutant after thresholding and converting to objects.



B Fluorescence recovery after bleaching



C Halftime



D Mobile fraction

