

Immune-related adverse events of checkpoint inhibitors

Manuel Ramos-Casals, Julie R. Brahmer, Margaret K. Callahan, Alejandra Flores-Chávez, Niamh Keegan, Munther A. Khamashta, Olivier Lambotte, Xavier Mariette, Aleix Prat and Maria E. Suárez-Almazor

<https://doi.org/10.1038/s41572-020-0160-6>

Supplementary Information.

Rates of reactivation/flare of pre-existing autoimmune diseases after ICI therapy. Detailed rates in individual and grouped diseases.

Autoimmune diseases	Frequency of relapse (%)	Pre-existing cases (n)	Relapse after ICI therapy (n)	References
Polymyalgia rheumatica	76,47	17	13	1, 2, 3, 4, 5, 6, 7
Myasthenia/myositis	57,14	14	8	1, 2, 3, 5, 6, 7, 9
Rheumatoid arthritis	53,49	86	46	1, 2, 3, 4, 5, 6, 7, 8, 9
Psoriasis/Psoriatic arthritis	51,69	118	61	1, 2, 3, 4, 5, 6, 7, 8, 9
Other arthritis (1)	44,44	9	4	2, 4, 6
Inflammatory bowel disease	34,62	52	18	2, 3, 4, 5, 6, 7, 8, 9
Sjögren syndrome	27,27	11	3	1, 2, 5, 6, 7
Autoimmune cytopenias (2)	27,27	11	3	1, 2, 5, 6, 7, 9
Systemic sclerosis	25,00	8	2	2, 5, 7, 8
Sarcoidosis	25,00	20	5	1, 3, 4, 5, 6, 7, 8
Spondyloarthropathies	25,00	16	4	1, 3, 6, 7, 8
Other cutaneous (3)	22,22	9	2	1, 2, 5, 6, 8, 9
Vitiligo	18,18	22	4	1, 6, 7
Demyelinating CNS (4)	16,67	18	3	1, 2, 3, 4, 6, 7, 8
ANCA vasculitis	14,29	7	1	3, 6, 8, 7
Thyroiditis	12,09	91	11	1, 2, 3, 4, 5, 6, 7, 8, 9
Lupus	11,76	17	2	1, 2, 4, 5, 6, 7, 9
PRP/cranial palsies (7)	0,00	6	0	3, 5, 6
Large/medium vasculitis (6)	0,00	5	0	1, 2, 7
Other digestive (5)	0,00	9	0	4, 5, 6, 7, 8, 9

(1) Non-specific arthritis, inflammatory arthritis, reactive arthritis/Reiter syndrome

(2) Immune thrombocytopenia, autoimmune hemolytic anemia, pernicious anemia

(3) Urticaria autoimmune, Alopecia areata, Cold agglutinin, Eczema, Erythema nodosum, Hidradenitis suppurativa, Lichen planus, Pemphigus

(4) Multiple sclerosis, myelitis, neuromyelitis

(5) Celiac disease, primary biliary colangitis, Autoimmune hepatitis, Pancreatitis

(6) Giant cell arteritis, polyarteritis nodosa

(7) Guillain-Barré syndrome, chronic polyradiculopathy, VII palsy

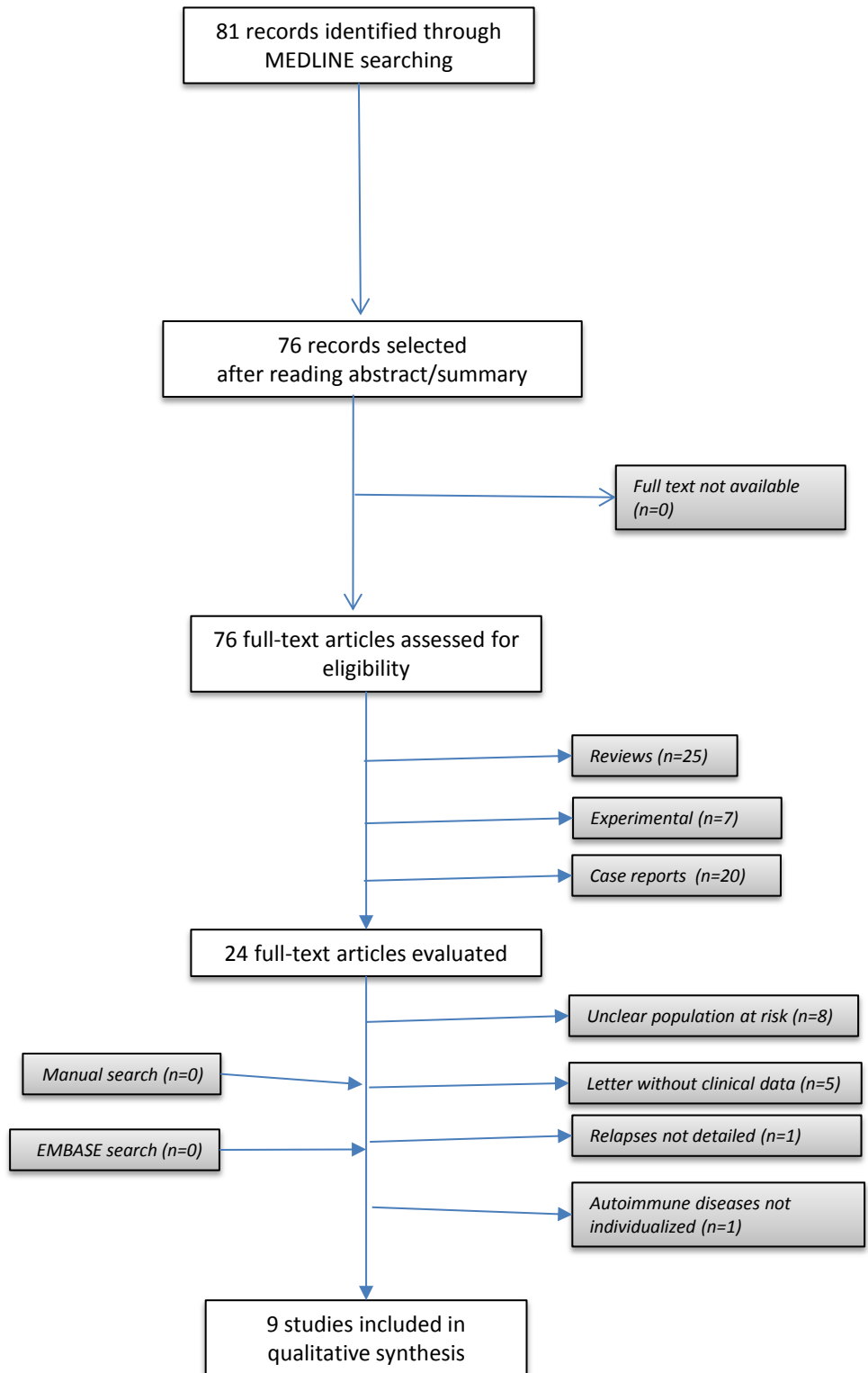
Flow diagram of search results

Identification

Screening

Eligibility

Inclusion



References

1. Danlos, F.-X. *et al.* Safety and efficacy of anti-programmed death 1 antibodies in patients with cancer and pre-existing autoimmune or inflammatory disease. *Eur. J. Cancer* **91**, 21–29 (2018).
2. Leonardi, G. C. *et al.* Safety of Programmed Death-1 Pathway Inhibitors Among Patients With Non-Small-Cell Lung Cancer and Preexisting Autoimmune Disorders. *J. Clin. Oncol.* **36**, 1905–1912 (2018).
3. Gutzmer, R. *et al.* Programmed cell death protein-1 (PD-1) inhibitor therapy in patients with advanced melanoma and preexisting autoimmunity or ipilimumab-triggered autoimmunity. *Eur. J. Cancer* **75**, 24–32 (2017).
4. Johnson, D. B. *et al.* Ipilimumab Therapy in Patients With Advanced Melanoma and Preexisting Autoimmune Disorders. *JAMA Oncol.* **2**, 234–240 (2016).
5. Menzies, A. M. *et al.* Anti-PD-1 therapy in patients with advanced melanoma and preexisting autoimmune disorders or major toxicity with ipilimumab. *Ann. Oncol. Off. J. Eur. Soc. Med. Oncol.* **28**, 368–376 (2017).
6. Abdel-Wahab, N., Shah, M., Lopez-Olivo, M. A. & Suarez-Almazor, M. E. Use of Immune Checkpoint Inhibitors in the Treatment of Patients With Cancer and Preexisting Autoimmune Disease: A Systematic Review. *Ann. Intern. Med.* **168**, 121–130 (2018).
7. Tison, A. *et al.* Safety and Efficacy of Immune Checkpoint Inhibitors in Patients With Cancer and Preexisting Autoimmune Disease: A Nationwide, Multicenter Cohort Study. *Arthritis Rheumatol. (Hoboken, N.J.)* **71**, 2100–2111 (2019).
8. Kahler, K. C. *et al.* Ipilimumab in metastatic melanoma patients with pre-existing autoimmune disorders. *Cancer Immunol. Immunother.* **67**, 825–834 (2018).
9. Kaur, A. *et al.* Immune-related adverse events in cancer patients treated with immune checkpoint inhibitors: A single-center experience. *Medicine (Baltimore)*. **98**, e17348 (2019).