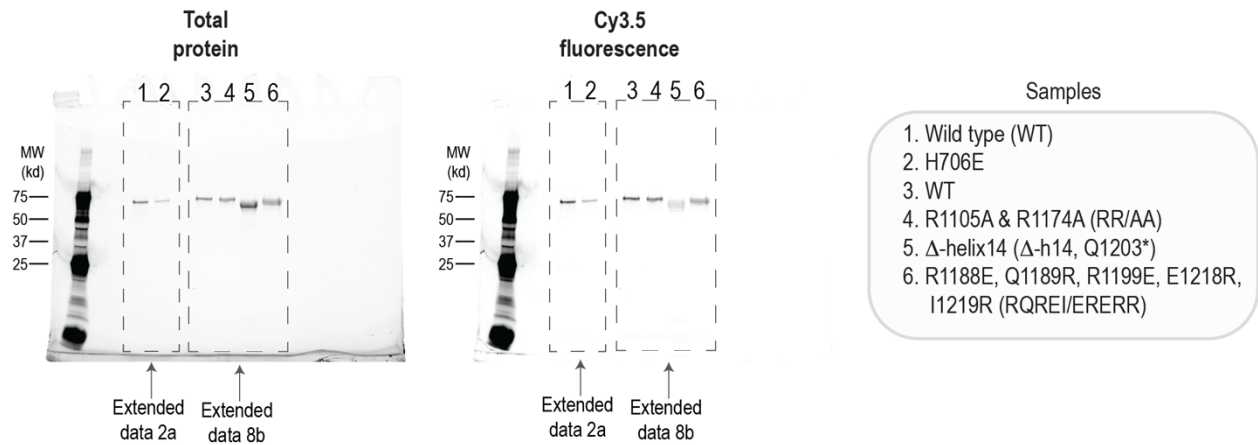


Supplementary Figure 1.



Supplementary Figure 1 legend. Raw gel scans. Total protein and Cy3.5 fluorescence scans of an SDS-PAGE gel that examined the indicated proteins. Total protein content was determined using BioRad Mini-PROTEAN TGX Stain-Free gels imaged by fluorescence on a BioRad ChemiDoc MP instrument. The scan of the Cy3.5 fluorescence was obtained using the same gel and instrument (in Cy3 fluorescence mode). The approximate positions of the molecular weight markers and regions of the gel cropped for presentation in Extended Data 2a or 8b are indicated.