

Additional file 5

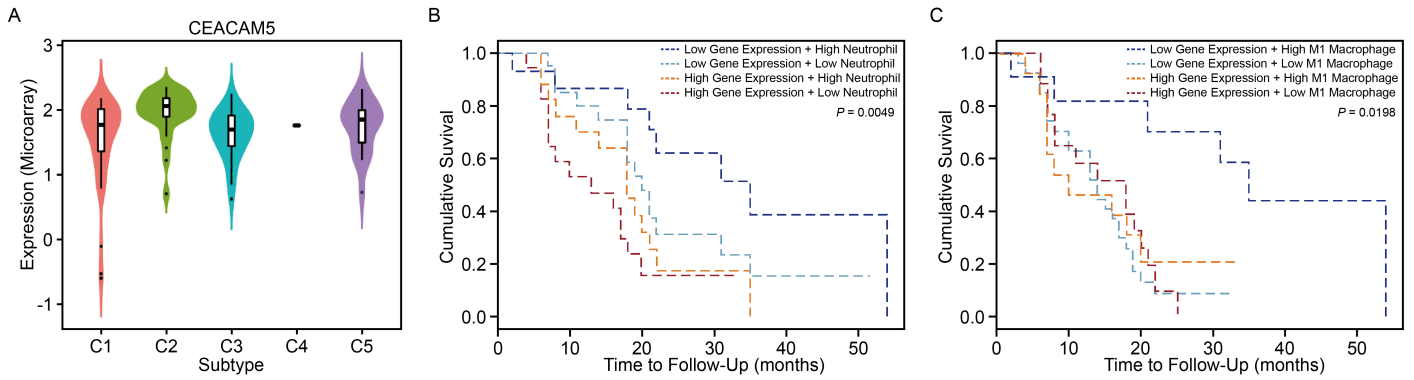


Fig. S5 Validation using the GSE21501 dataset. **(A)** Violin plots for CEACAM5 expression in multiple immune subtypes of pancreatic cancer ($P=0.0022$). C1, wound healing; C2, IFN- γ dominant; C3, inflammatory; C4, lymphocyte depleted; C5, TGF- β dominant. **(B)** Kaplan-Meier curves for overall survival split by level of CEACAM5 expression and infiltration level of neutrophils in pancreatic cancer. **(C)** Kaplan-Meier curves for overall survival split by level of CEACAM5 expression and infiltration level of M1 macrophages in pancreatic cancer.