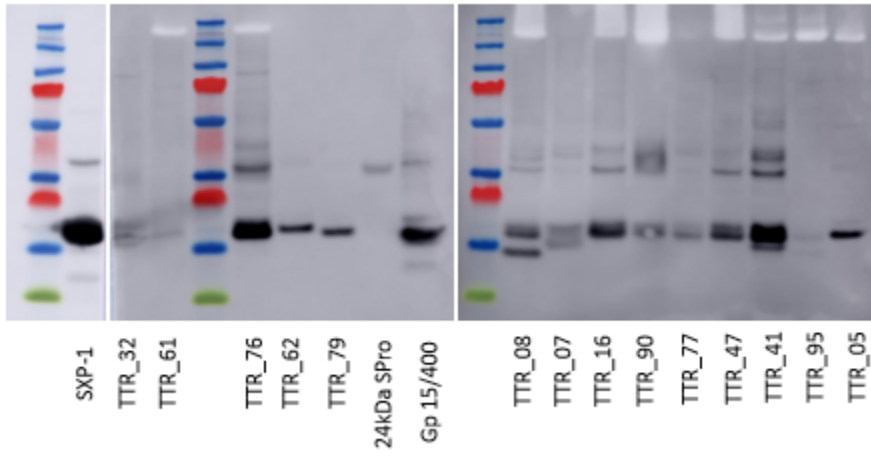
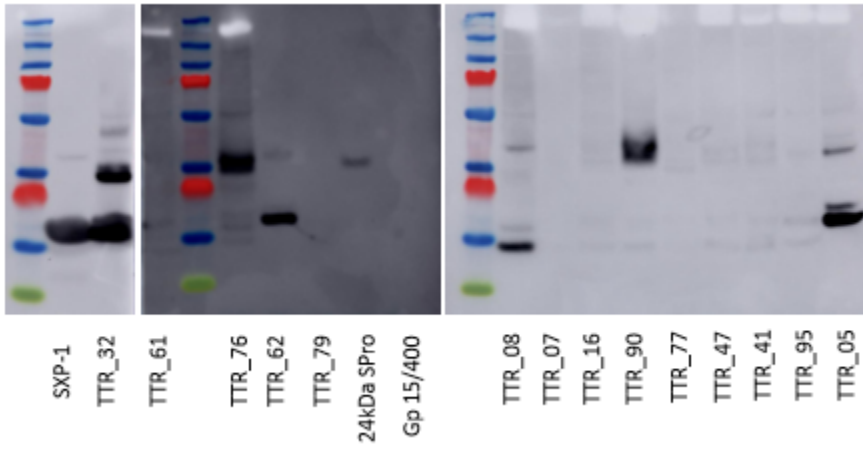


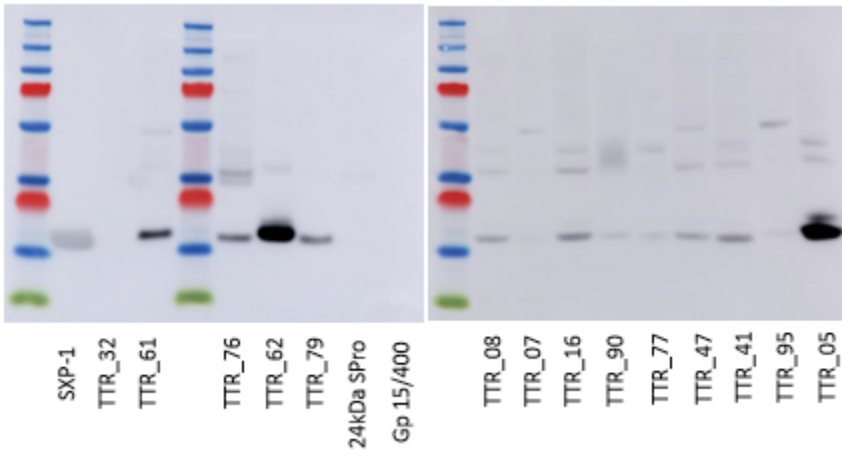
**A** P1 Serum



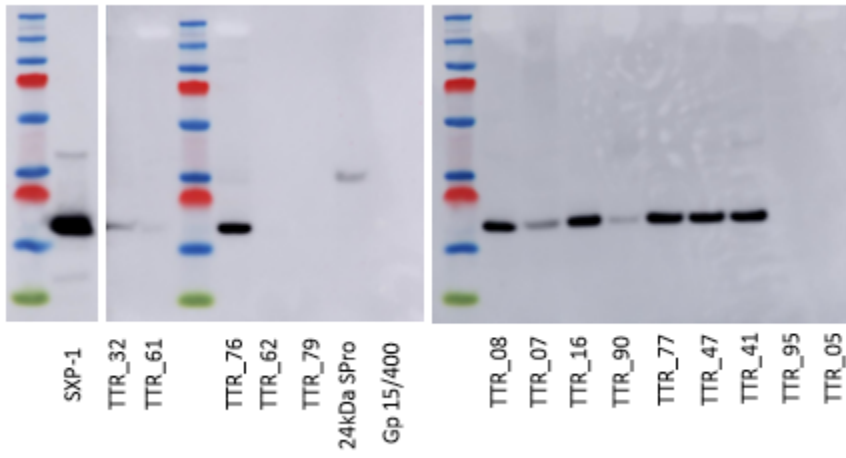
**B** P3 Serum



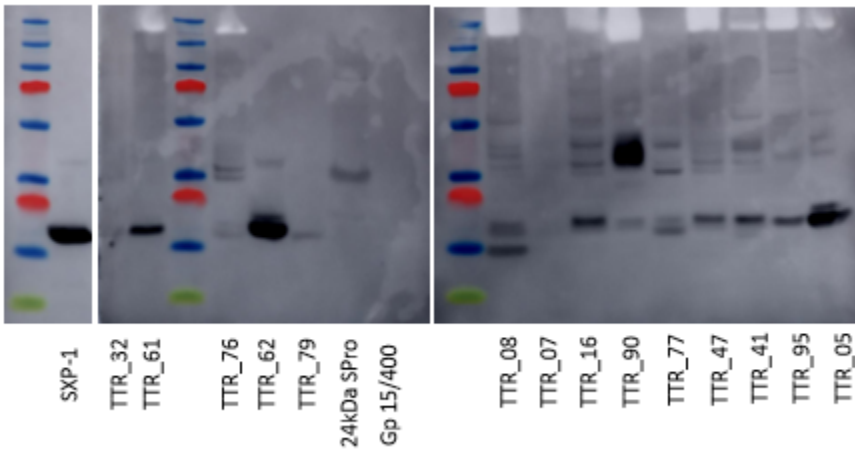
**C** P5 Serum



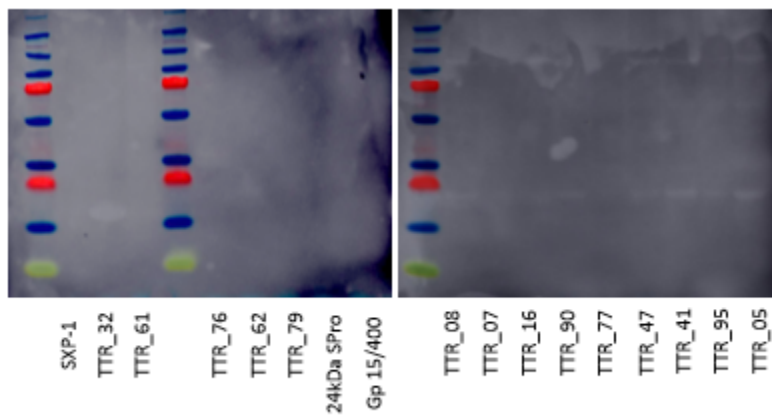
### D P8 Serum



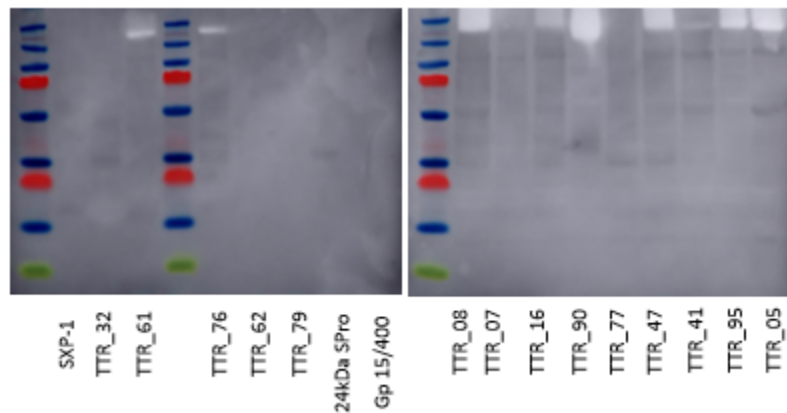
### E P9 Serum



### F 284 Control Serum



## G 245 Control Serum



**Supplemental Data Figure 8. Immunoblot analysis of sera from patients infected with filaria against different filarial antigens.** Filarial proteins were expressed in Shuffle T7 *E. coli* and used for immunoblot analysis against sera from patients with filarial infection. Sera (284, 245) from allergic subjects served as negative controls. **A**, P1; **B**, P3; **C**, P5; **D**, P8; and **E**, P9. **F**, 284 allergic control subject: cat, dog, and dust mite; **G**, 245 allergic control subject: peanut, cashew, and dust mite.