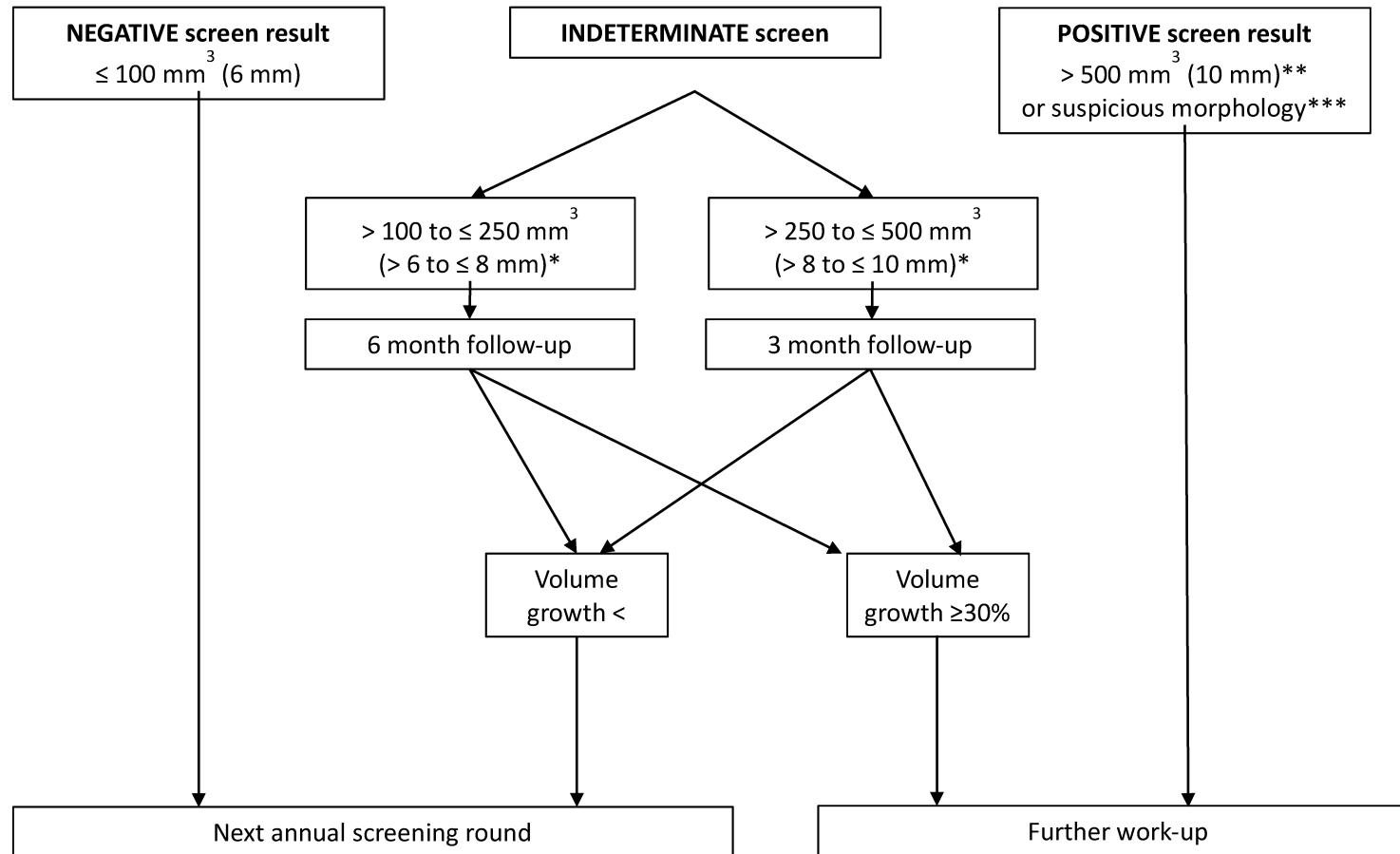


# BASELINE CT SOLID NODULES

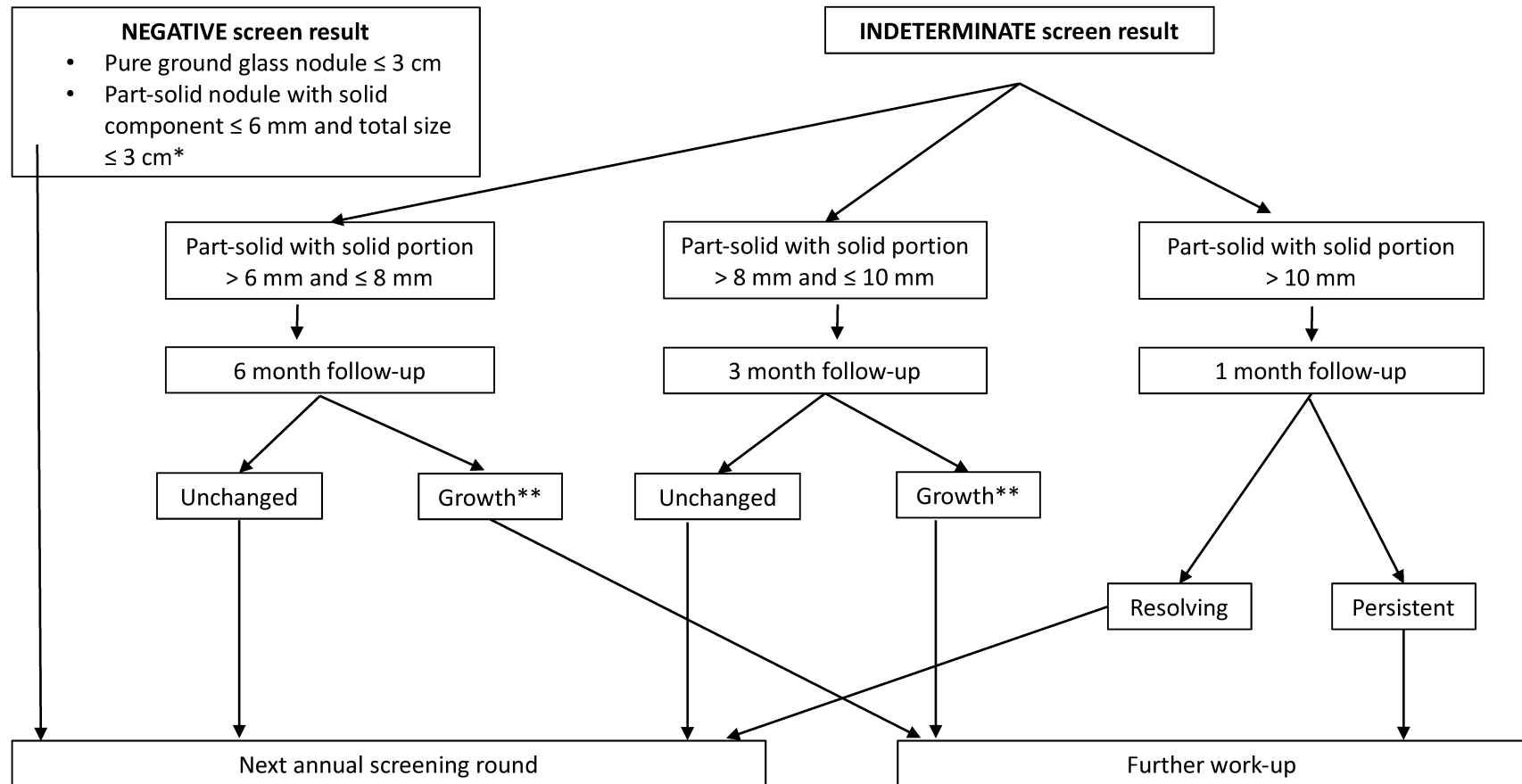


\* In case segmentation has failed

\*\* In case of a cystic airspace nodule, the solid portion should be taken into account

\*\*\* Pleural indentation, cystic component, air bronchogram or bubble like lucencies, spiculation

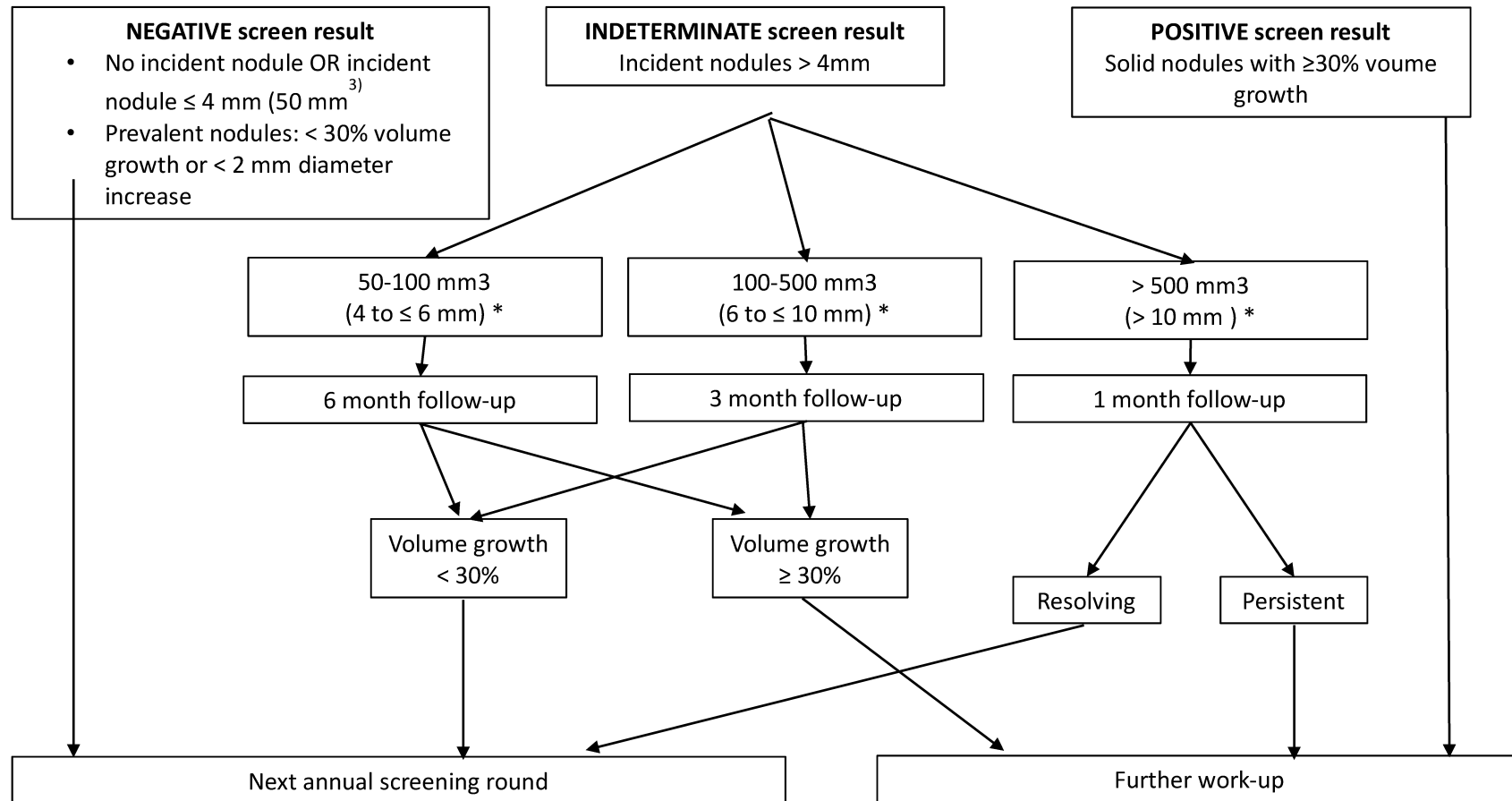
# BASELINE CT SUBSOLID NODULES



\* For part solid and GGN without morphological criteria suggesting malignancy (bubble like lucencies, border of bulla, pleural indentation)

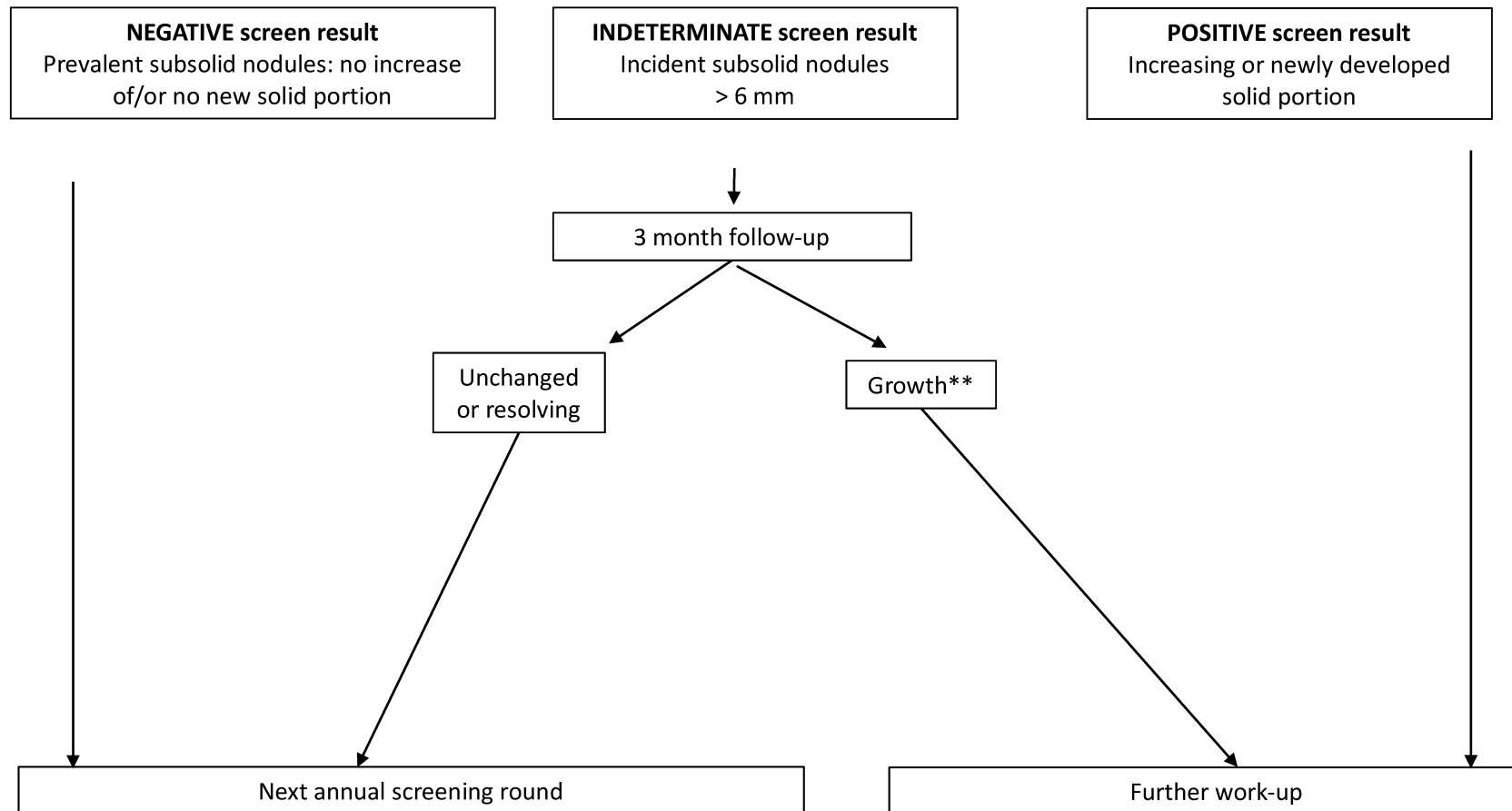
\*\* Increase in solid portion of  $\geq 2$ mm, measured on lung window setting

# 1-YEAR FOLLOW-UP CT SOLID NODULES



\* In case segmentation has failed

# 1-YEAR FOLLOW-UP CT SUBSOLID NODULES



\* For part solid and GGN without morphological criteria suggesting malignancy (bubble like lucencies, border of bulla, pleural indentation)

\*\* Increase in solid portion of  $\geq 2$ mm, measured on lung window setting

## 2-YEAR FOLLOW-UP

