

Supplementary Materials

Housing and Cancer Care and Outcomes: A Systematic Review

Authors: Qinjin Fan PhD,¹ Leticia Nogueira PhD,¹ K. Robin Yabroff PhD,¹ S. M. Qasim Hussaini,² Craig E. Pollack MD, MHS^{3,4}

Author affiliations:

1. Surveillance & Health Equity Science Department, American Cancer Society, Atlanta, GA, USA
2. Sidney Kimmel Comprehensive Cancer Center, Johns Hopkins Hospital, Baltimore, MD, USA
3. Department of Health Policy and Management, Johns Hopkins School of Public Health, Baltimore, MD, USA
4. Johns Hopkins School of Nursing, Baltimore, MD, USA

Corresponding Author: Qinjin Fan

3380 Chastain Meadows Pkwy NW Suite 200, Kennesaw, GA 30144

E-mail: qinjin.fan@cancer.org

Phone: 404.417.8055

Supplementary Table

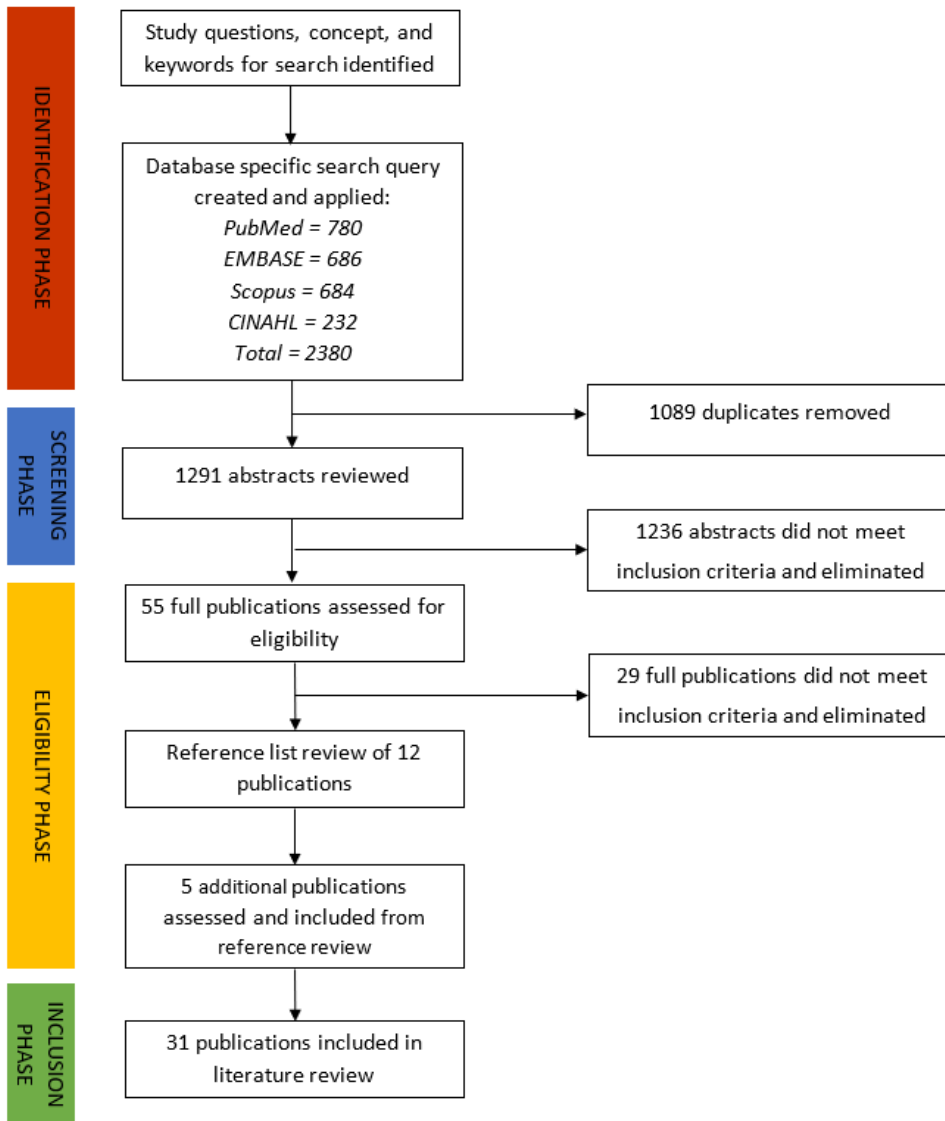
Supplementary Table 1. Results of search queries conducted using PubMed, Scopus, and CINAHL databases.

Database	Search query	No. of papers identified
PubMed	("neoplasms"[MeSH Terms] OR "cancer"[tiab]) AND ("public housing"[tiab] OR "public houses"[tiab] OR "multifamily"[tiab] OR "voucher"[tiab] OR "vouchers"[tiab] OR "subsidy"[tiab] OR "subsidize"[tiab] OR "subsidized"[tiab] OR "housing subsidies"[tiab] OR "housing"[tiab] OR "mortgage"[tiab] OR "redline"[tiab] OR "redlining"[tiab] OR "subsidies"[tiab] OR "housing assistance"[tiab] OR "mortgage lending"[tiab] OR "rent"[tiab] OR "renter"[tiab] OR "renters"[tiab] OR "rental assistance"[tiab] OR "homeless"[tiab]) OR "eviction"[tiab])	780
Embase	(neoplasms OR cancer:ab,ti) AND ('public housing':ab,ti OR 'public houses':ab,ti OR 'voucher':ab,ti OR 'vouchers':ab,ti OR 'multifamily':ab,ti OR 'subsidy':ab,ti OR 'subsidize':ab,ti OR 'subsidized':ab,ti OR 'housing subsidies':ab,ti OR 'housing':ab,ti OR 'mortgage':ab,ti OR 'redline':ab,ti OR 'redlining':ab,ti OR 'subsidies':ab,ti OR 'housing assistance':ab,ti OR 'mortgage lending':ab,ti OR 'rent':ab,ti OR 'renter':ab,ti OR 'renters':ab,ti OR 'rental assistance':ab,ti OR 'homeless':ab,ti OR 'eviction':ab,ti)	686
CINAHL	(TITLE-ABS-KEY (neoplasms) OR TITLE-ABS-KEY (cancer)) AND (TITLE-ABS-KEY (public AND housing) OR TITLE-ABS-KEY (public AND houses) OR TITLE-ABS-KEY (voucher) OR TITLE-ABS-KEY (vouchers) OR TITLE-ABS-KEY (multifamily) OR TITLE-ABS-KEY (subsidy) OR TITLE-ABS-KEY (subsidize) OR TITLE-ABS-KEY (subsidized) OR TITLE-ABS-KEY (housing AND subsidies) OR TITLE-ABS-KEY (housing) OR TITLE-ABS-KEY (mortgage) OR TITLE-ABS-KEY (redline) OR TITLE-ABS-KEY (redlining) OR TITLE-ABS-KEY (subsidies) OR TITLE-ABS-KEY (housing assistance) OR TITLE-ABS-KEY (mortgage lending) OR TITLE-ABS-KEY (rent) OR TITLE-ABS-KEY (renter) OR TITLE-ABS-KEY (renters) OR TITLE-ABS-KEY (rental assistance) OR TITLE-ABS-KEY (homeless) OR TITLE-ABS-KEY (eviction))	684

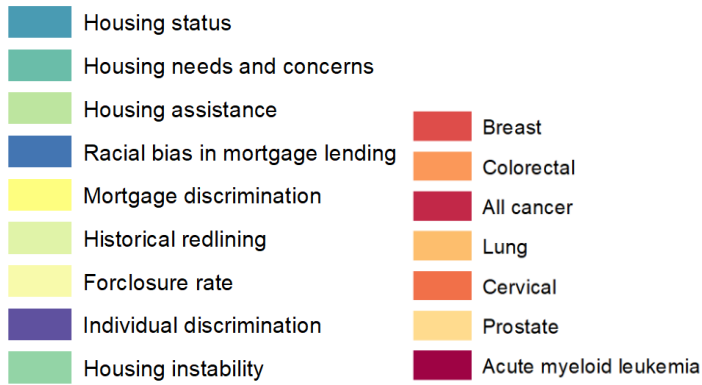
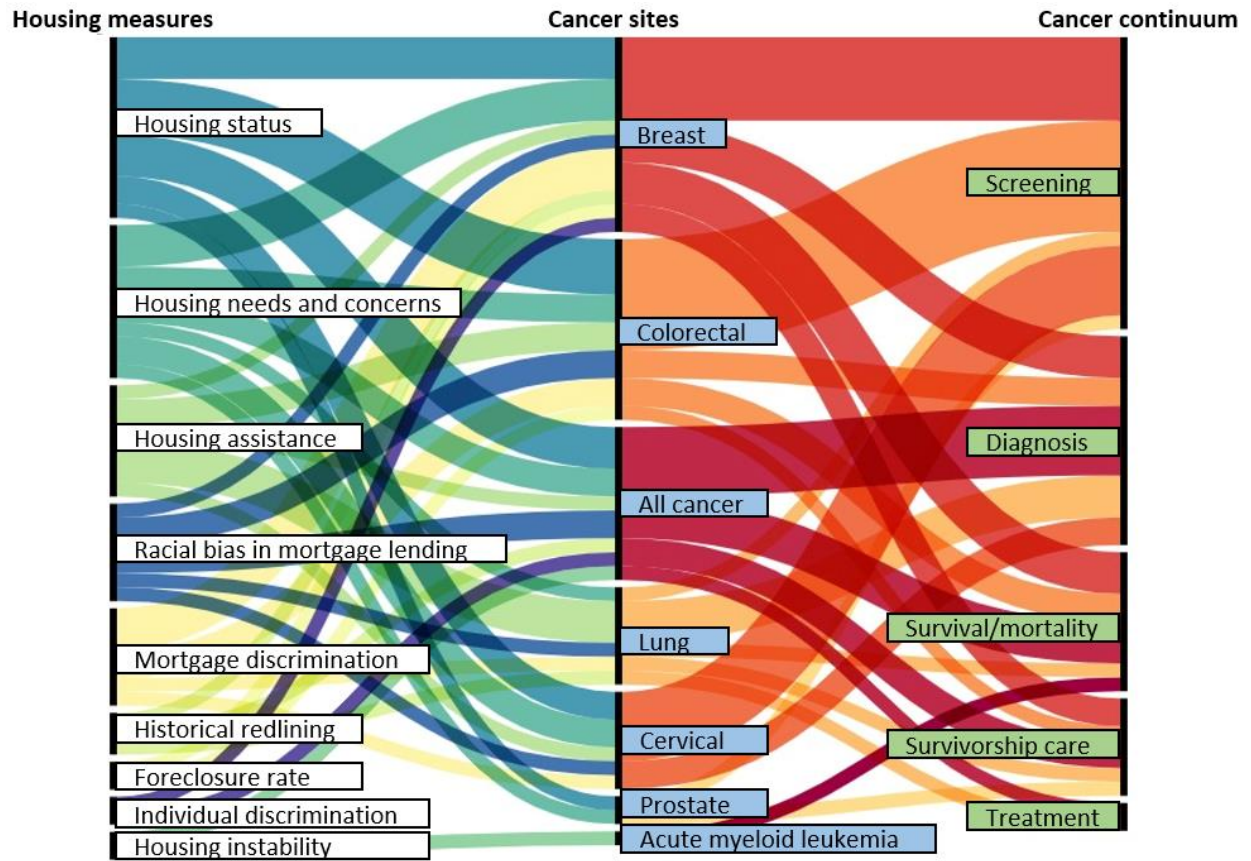
Scopus	(neoplasms OR TI cancer OR AB cancer) AND (TI public housing OR AB public housing OR TI public houses OR AB public houses OR TI voucher OR AB voucher OR TI vouchers OR AB vouchers OR TI multifamily OR AB multifamily OR TI subsidy OR AB subsidy OR TI subsidize OR AB subsidize OR TI subsidized OR AB subsidized OR TI housing subsidies OR AB housing subsidies OR TI housing OR AB housing OR TI mortgage OR AB mortgage OR TI redline OR AB redline OR TI relining OR AB relining OR TI subsidies OR AB subsidies OR TI housing assistance OR AB housing assistance OR TI mortgage lending OR AB mortgage lending OR TI rent OR AB rent OR TI renter OR AB renter OR TI renters OR AB renters OR TI rental assistance OR AB rental assistance OR TI homeless OR AB homeless OR TI eviction OR AB eviction)	232
Total with duplicates		2380
Duplicates		1089
Total		1291

Supplementary Figures

Supplementary Figure 1. Systematic literature review flow chart

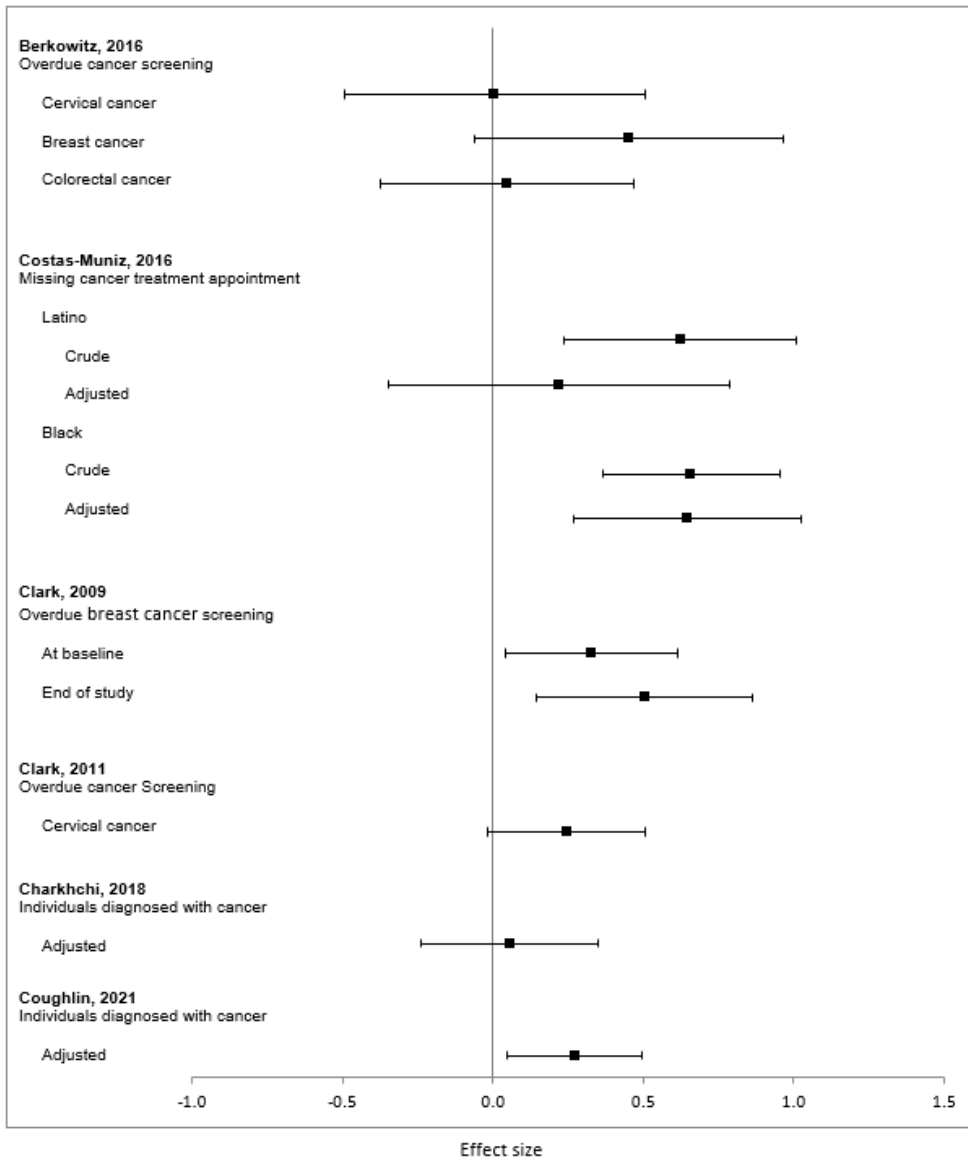


Supplementary Figure 2. Distribution of results across the cancer continuum by cancer site and housing measures

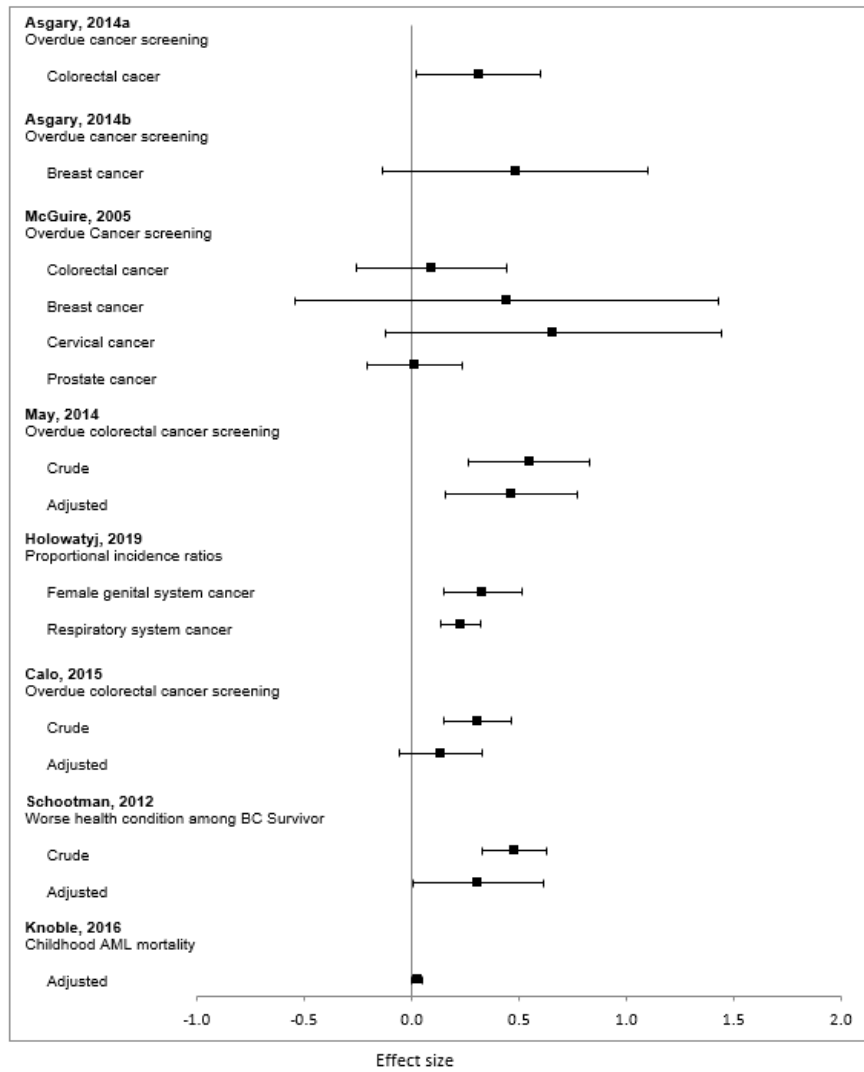


Supplementary Figure 3. A) Forest plot of housing needs, concerns, and instability and cancer outcomes. B) Forest plot of housing status and instability and cancer outcomes. *Proportional incidence ratio: a method to compare homeless population and referent population where a standard set of age-adjusted and sex-specific proportions is available for each cancer type.

A

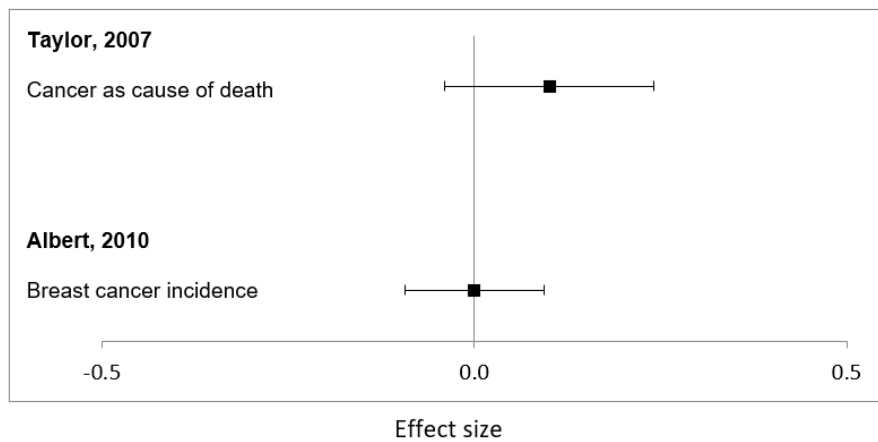


B

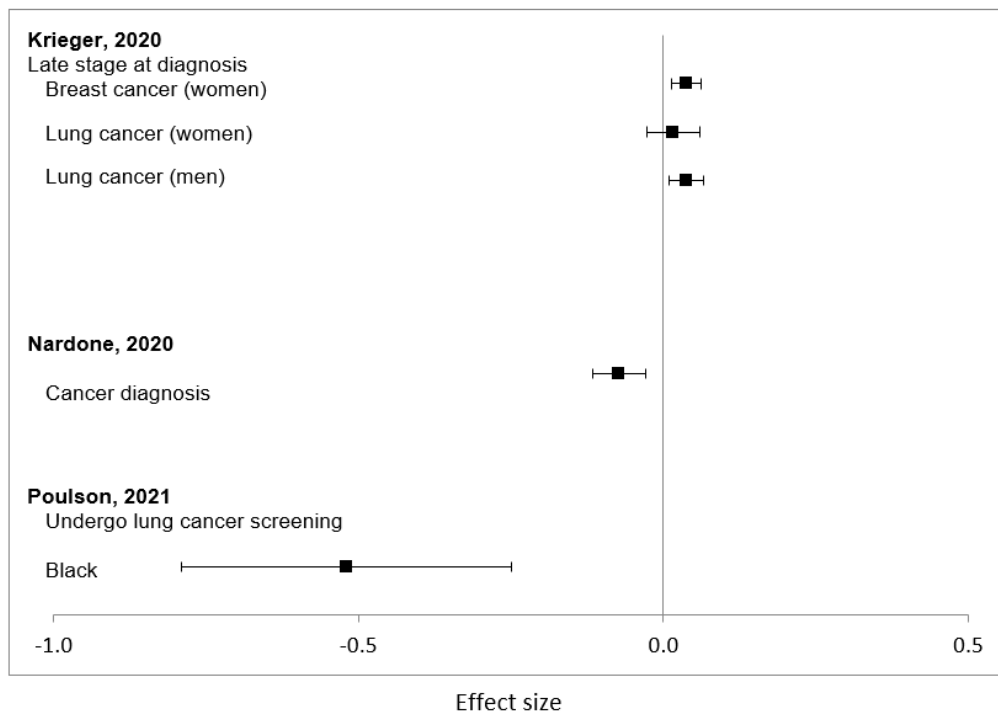


Supplementary Figure 4. A) Forest plot of self-reported housing discrimination and cancer outcomes. B) Forest plot of historically redlined areas and cancer outcomes. C) Forest plot of mortgage denial rate and cancer outcomes. D) Forest plot of racial bias in mortgage lending and cancer outcomes.

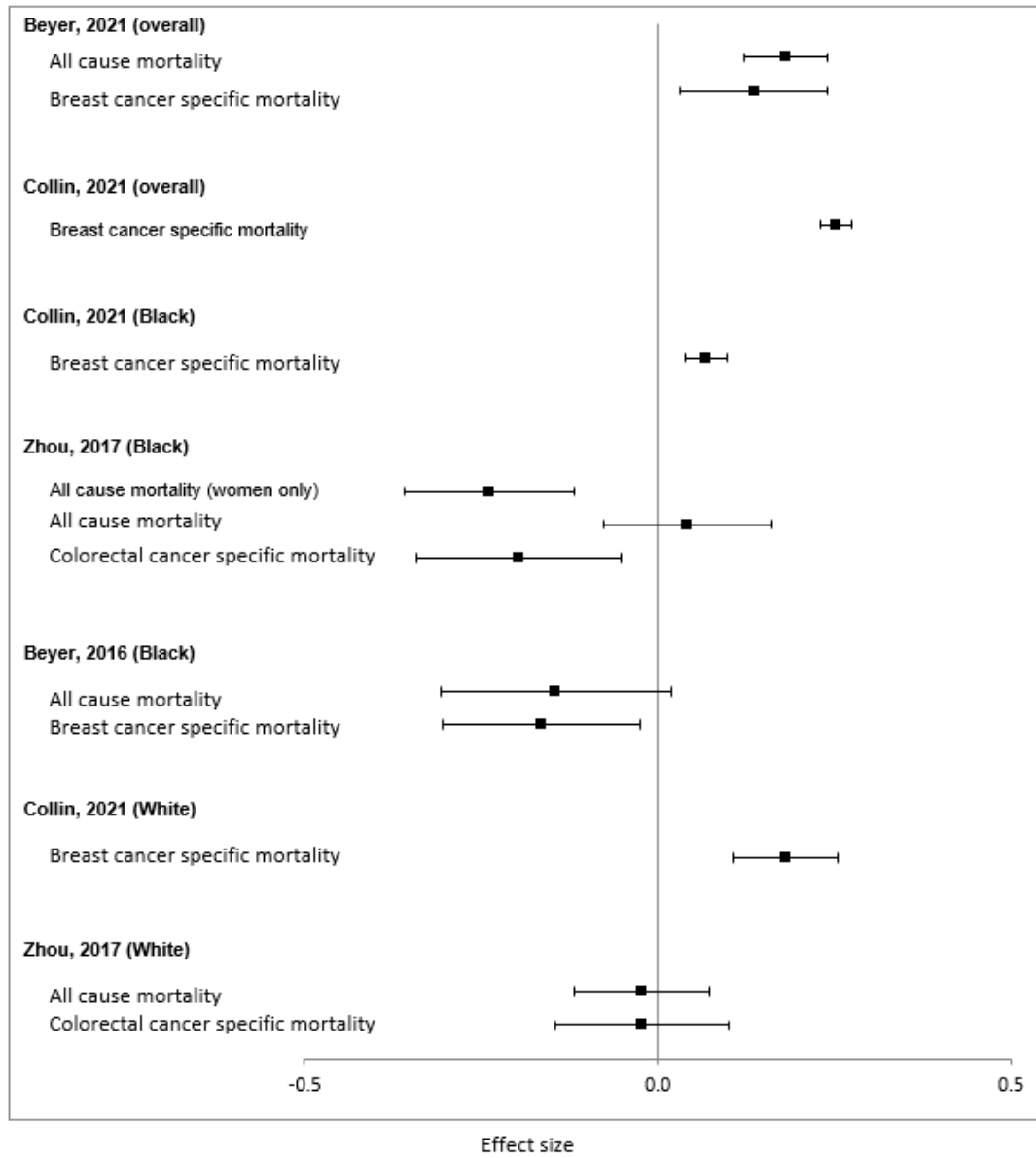
A



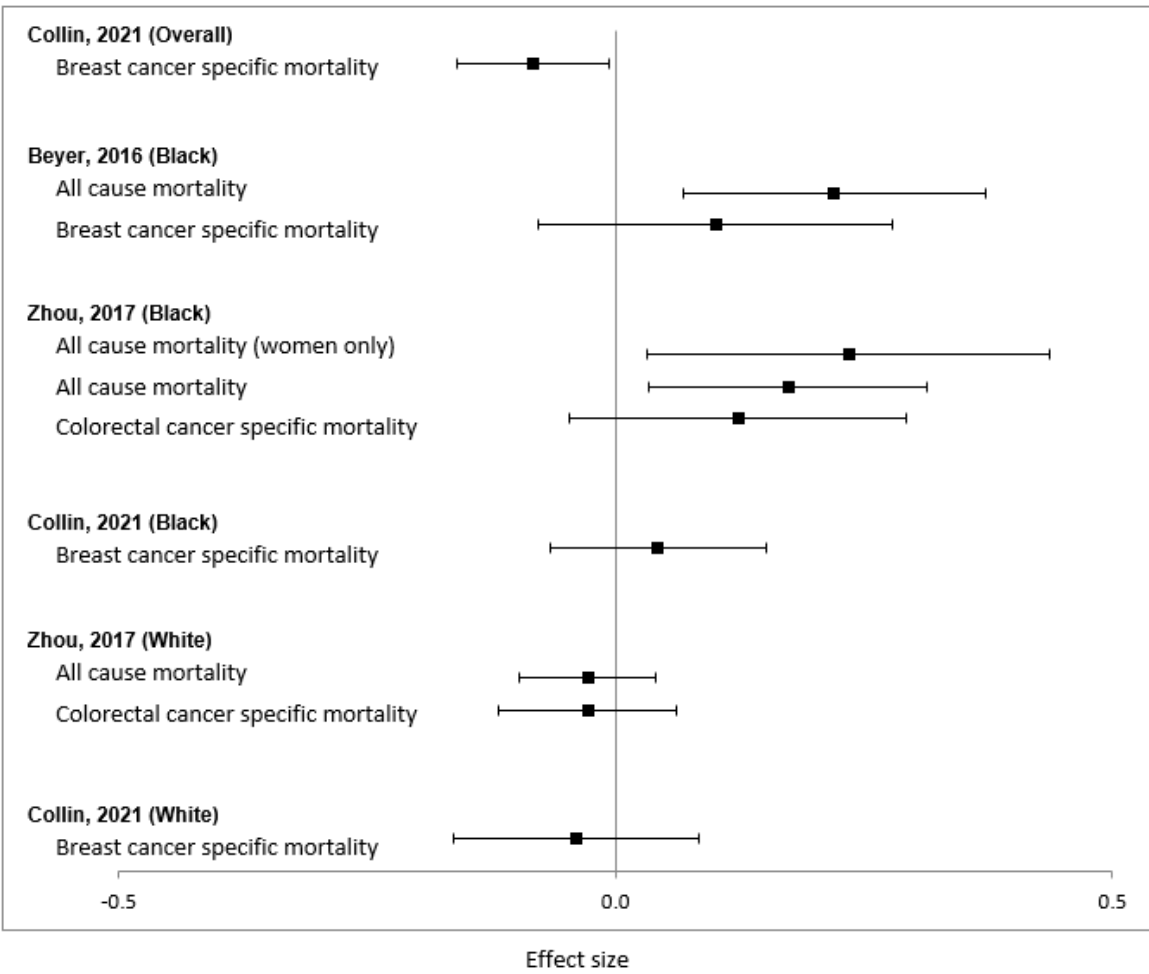
B



C



D



Supplementary Figure 5. Forest plot of housing assistance and cancer outcomes. *FIT = Fecal Immunochemical Test

