

# Appendix A

Table A1. Logged Employment Outcome: Coefficients for Disability x Quarter Interactions, By Occupational Category, Without Demographic Controls

	(1)	(2)	(3)	(4)	(5)	(6)	(7)
	Employed	Essential	Non-Ess.	Teleworkable	Non-Tele.	Frontline	Non-Front.
Disabled	-0.935*** (0.0145)	-0.898*** (0.0247)	-1.023*** (0.0149)	-1.100*** (0.0101)	-0.828*** (0.0162)	-0.799*** (0.0237)	-1.049*** (0.00823)
Disabled × Q1 2020	0.0296 (0.0179)	-0.00390 (0.0272)	0.108*** (0.0198)	0.0446*** (0.0109)	0.00944 (0.0226)	-0.0237 (0.0293)	0.0788*** (0.0127)
Disabled × Q2 2020	0.00225 (0.0473)	-0.0000915 (0.0463)	0.00238 (0.0650)	0.00344 (0.0177)	-0.00518 (0.0775)	-0.0199 (0.0678)	0.0280 (0.0332)
Disabled × Q3 2020	0.000411 (0.0239)	0.0232 (0.0322)	-0.0589** (0.0277)	0.00347 (0.0247)	0.00480 (0.0238)	0.0113 (0.0294)	-0.00631 (0.0273)
Disabled × Q4 2020	0.00419 (0.0176)	0.0198 (0.0292)	-0.0424* (0.0248)	0.0245 (0.0156)	-0.00878 (0.0280)	-0.00446 (0.0363)	0.0136 (0.0107)
Disabled × Q1 2021	-0.0139 (0.0180)	-0.0179 (0.0272)	-0.00722 (0.0297)	0.0146 (0.0134)	-0.0281 (0.0221)	-0.0341 (0.0292)	0.00906 (0.0148)
Disabled × Q2 2021	0.0212 (0.0208)	0.00883 (0.0281)	0.0507* (0.0266)	0.0912*** (0.0174)	-0.0154 (0.0305)	-0.0145 (0.0339)	0.0573*** (0.0135)
Disabled × Q3 2021	0.0526 (0.0368)	0.0626 (0.0422)	0.0284 (0.0377)	0.127*** (0.0441)	0.00364 (0.0333)	0.0222 (0.0336)	0.0804* (0.0434)
Disabled × Q4 2021	0.107*** (0.0189)	0.102*** (0.0285)	0.117*** (0.0184)	0.146*** (0.0216)	0.0854*** (0.0186)	0.0676*** (0.0252)	0.145*** (0.0209)
Disabled × Q1 2022	0.0941*** (0.0256)	0.0825** (0.0397)	0.120*** (0.0258)	0.123*** (0.0195)	0.0778*** (0.0296)	0.0335 (0.0488)	0.150*** (0.0144)
Disabled × Q2 2022	0.121*** (0.0172)	0.130*** (0.0291)	0.0950*** (0.0281)	0.166*** (0.0201)	0.0815*** (0.0176)	0.0812*** (0.0273)	0.158*** (0.0166)
Constant	-0.295*** (0.00318)	-0.672*** (0.00139)	-1.452*** (0.00712)	-1.141*** (0.00518)	-0.883*** (0.00300)	-1.157*** (0.00266)	-0.843*** (0.00536)
Weighted	Yes	Yes	Yes	Yes	Yes	Yes	Yes
Robust SE	Yes	Yes	Yes	Yes	Yes	Yes	Yes
N	240	240	240	240	240	240	240

\*  $p < 0.10$ , \*\*  $p < 0.05$ , \*\*\*  $p < 0.01$  Standard errors in parentheses. Outcome is  $\ln(\text{employed at work in [occupation type]}/\text{population})$ . Interaction coefficients are relative to Q1 2019. Essential jobs are based on DHS's "Identifying Critical Infrastructure During COVID-19" guidelines. Our definition of teleworkable jobs comes from Dingel and Neiman 2020. Frontline jobs are those that are essential and not teleworkable.

# Appendix B

Table B1. Logged Employment Outcome: Coefficients for Disability x Quarter Interactions for Employed At Work, By Reference Quarter

	Reference Quarter								
	(1)	(2)	(3)	(4)	(5)	(6)	(7)	(8)	(9)
	Q1 18	Q2 18	Q3 18	Q4 18	Q1 19	Q2 19	Q3 19	Q4 19	Q1 20
Disabled × Q1 2020	0.00849 (0.0330)	0.0364 (0.0472)	0.0383 (0.0418)	0.00386 (0.0286)	0.0302 (0.0196)	0.0384* (0.0223)	-0.0105 (0.0294)	0.0489* (0.0253)	
Disabled × Q2 2020	-0.0239 (0.0848)	0.00397 (0.0985)	0.00592 (0.0883)	-0.0286 (0.0831)	-0.00226 (0.0724)	0.00598 (0.0741)	-0.0429 (0.0773)	0.0165 (0.0652)	-0.0324 (0.0640)
Disabled × Q3 2020	-0.0653 (0.0660)	-0.0374 (0.0799)	-0.0355 (0.0707)	-0.0700 (0.0638)	-0.0437 (0.0510)	-0.0354 (0.0531)	-0.0843 (0.0580)	-0.0249 (0.0472)	-0.0738* (0.0439)
Disabled × Q4 2020	-0.0241 (0.0336)	0.00380 (0.0500)	0.00574 (0.0392)	-0.0287 (0.0311)	-0.00244 (0.0254)	0.00580 (0.0254)	-0.0431 (0.0292)	0.0163 (0.0228)	-0.0326* (0.0194)
Disabled × Q1 2021	-0.0240 (0.0559)	0.00387 (0.0704)	0.00581 (0.0612)	-0.0287 (0.0525)	-0.00237 (0.0413)	0.00587 (0.0440)	-0.0430 (0.0475)	0.0164 (0.0368)	-0.0325 (0.0321)
Disabled × Q2 2021	-0.0160 (0.0463)	0.0119 (0.0601)	0.0139 (0.0532)	-0.0206 (0.0426)	0.00570 (0.0326)	0.0139 (0.0333)	-0.0349 (0.0400)	0.0245 (0.0310)	-0.0245 (0.0258)
Disabled × Q3 2021	0.0328 (0.0569)	0.0607 (0.0686)	0.0626 (0.0622)	0.0282 (0.0550)	0.0545 (0.0497)	0.0627 (0.0494)	0.0138 (0.0526)	0.0732 (0.0464)	0.0243 (0.0448)
Disabled × Q4 2021	0.0716 (0.0528)	0.0995 (0.0664)	0.101* (0.0599)	0.0670 (0.0504)	0.0933** (0.0380)	0.102** (0.0401)	0.0527 (0.0457)	0.112*** (0.0375)	0.0631** (0.0292)
Disabled × Q1 2022	0.0752 (0.0535)	0.103 (0.0648)	0.105* (0.0617)	0.0706 (0.0512)	0.0969** (0.0400)	0.105** (0.0455)	0.0563 (0.0486)	0.116*** (0.0437)	0.0667* (0.0377)
Disabled × Q2 2022	0.103** (0.0417)	0.130** (0.0542)	0.132** (0.0511)	0.0979** (0.0381)	0.124*** (0.0278)	0.132*** (0.0301)	0.0836** (0.0370)	0.143*** (0.0323)	0.0940*** (0.0227)
Observations	240	240	240	240	240	240	240	240	240

\*  $p < 0.10$ , \*\*  $p < 0.05$ , \*\*\*  $p < 0.01$  Standard errors in parentheses. Outcome is  $\ln(\text{employed at work}/\text{population})$ . Interaction coefficients are relative to Q1 2019. Models include demographic controls for age, gender, race, and education attainment of Bachelor's degree and are weighted by working age (18-64) population size, as calculated from CPS data.

Table B2. Logged Employment Outcome: Coefficients for Disability x Quarter Interactions for Essential, By Reference Quarter

	Reference Quarter									
	(1)	(2)	(3)	(4)	(5)	(6)	(7)	(8)	(9)	
	Q1 18	Q2 18	Q3 18	Q4 18	Q1 19	Q2 19	Q3 19	Q4 19	Q1 20	
Disabled × Q1 2020	-0.0397 (0.0339)	-0.0102 (0.0471)	-0.0187 (0.0465)	-0.0323 (0.0296)	-0.00919 (0.0218)	-0.00556 (0.0249)	-0.0757** (0.0328)	0.0282 (0.0385)		
Disabled × Q2 2020	-0.0651 (0.0777)	-0.0356 (0.0911)	-0.0441 (0.0827)	-0.0577 (0.0754)	-0.0346 (0.0649)	-0.0309 (0.0684)	-0.101 (0.0707)	0.00279 (0.0636)	-0.0254 (0.0571)	
Disabled × Q3 2020	-0.0753 (0.0659)	-0.0458 (0.0790)	-0.0542 (0.0728)	-0.0679 (0.0640)	-0.0448 (0.0514)	-0.0411 (0.0543)	-0.111* (0.0595)	-0.00739 (0.0554)	-0.0356 (0.0454)	
Disabled × Q4 2020	-0.0327 (0.0370)	-0.00321 (0.0522)	-0.0116 (0.0441)	-0.0253 (0.0347)	-0.00215 (0.0309)	0.00148 (0.0312)	-0.0686** (0.0342)	0.0352 (0.0387)	0.00704 (0.0244)	
Disabled × Q1 2021	-0.0556 (0.0541)	-0.0262 (0.0683)	-0.0346 (0.0612)	-0.0482 (0.0503)	-0.0251 (0.0403)	-0.0215 (0.0451)	-0.0916* (0.0470)	0.0123 (0.0429)	-0.0159 (0.0317)	
Disabled × Q2 2021	-0.0417 (0.0465)	-0.0123 (0.0596)	-0.0207 (0.0574)	-0.0343 (0.0430)	-0.0112 (0.0343)	-0.00756 (0.0356)	-0.0777* (0.0425)	0.0262 (0.0421)	-0.00201 (0.0283)	
Disabled × Q3 2021	0.0394 (0.0570)	0.0689 (0.0681)	0.0604 (0.0659)	0.0468 (0.0554)	0.0699 (0.0509)	0.0735 (0.0518)	0.00344 (0.0546)	0.107* (0.0554)	0.0791* (0.0469)	
Disabled × Q4 2021	0.0579 (0.0519)	0.0874 (0.0646)	0.0790 (0.0631)	0.0653 (0.0498)	0.0885** (0.0378)	0.0921** (0.0414)	0.0220 (0.0472)	0.126*** (0.0471)	0.0976*** (0.0304)	
Disabled × Q1 2022	0.0751 (0.0613)	0.105 (0.0710)	0.0962 (0.0729)	0.0825 (0.0595)	0.106** (0.0495)	0.109* (0.0563)	0.0392 (0.0581)	0.143** (0.0583)	0.115** (0.0476)	
Disabled × Q2 2022	0.110** (0.0431)	0.140** (0.0544)	0.131** (0.0569)	0.118*** (0.0396)	0.141*** (0.0300)	0.145*** (0.0335)	0.0744* (0.0405)	0.178*** (0.0432)	0.150*** (0.0251)	
Observations	240	240	240	240	240	240	240	240	240	

\*  $p < 0.10$ , \*\*  $p < 0.05$ , \*\*\*  $p < 0.01$  Standard errors in parentheses. Outcome is  $\ln(\text{employed at work in essential job/population})$ . Interaction coefficients are relative to Q1 2019. Models include demographic controls for age, gender, race, and education attainment of Bachelor's degree and are weighted by working age (18-64) population size, as calculated from CPS data.

Table B3. Logged Employment Outcome: Coefficients for Disability x Quarter Interactions for Non-Essential, By Reference Quarter

	Reference Quarter								
	(1)	(2)	(3)	(4)	(5)	(6)	(7)	(8)	(9)
	Q1 18	Q2 18	Q3 18	Q4 18	Q1 19	Q2 19	Q3 19	Q4 19	Q1 20
Disabled × Q1 2020	0.121*** (0.0408)	0.144** (0.0600)	0.175*** (0.0546)	0.0883** (0.0400)	0.123*** (0.0319)	0.143*** (0.0285)	0.147*** (0.0327)	0.0983*** (0.0367)	
Disabled × Q2 2020	0.0668 (0.114)	0.0900 (0.132)	0.121 (0.122)	0.0342 (0.115)	0.0684 (0.102)	0.0885 (0.102)	0.0931 (0.105)	0.0441 (0.0919)	-0.0542 (0.0890)
Disabled × Q3 2020	-0.0485 (0.0791)	-0.0253 (0.0977)	0.00553 (0.0889)	-0.0812 (0.0799)	-0.0469 (0.0652)	-0.0268 (0.0636)	-0.0222 (0.0681)	-0.0712 (0.0579)	-0.169*** (0.0499)
Disabled × Q4 2020	-0.0137 (0.0474)	0.00956 (0.0660)	0.0404 (0.0589)	-0.0463 (0.0483)	-0.0121 (0.0427)	0.00807 (0.0377)	0.0127 (0.0410)	-0.0363 (0.0400)	-0.135*** (0.0315)
Disabled × Q1 2021	0.0470 (0.0748)	0.0703 (0.0928)	0.101 (0.0849)	0.0144 (0.0732)	0.0486 (0.0608)	0.0688 (0.0599)	0.0734 (0.0630)	0.0244 (0.0552)	-0.0739* (0.0446)
Disabled × Q2 2021	0.0440 (0.0594)	0.0672 (0.0774)	0.0981 (0.0698)	0.0114 (0.0588)	0.0456 (0.0486)	0.0658 (0.0443)	0.0703 (0.0484)	0.0214 (0.0461)	-0.0769** (0.0344)
Disabled × Q3 2021	0.0163 (0.0672)	0.0396 (0.0847)	0.0704 (0.0776)	-0.0163 (0.0680)	0.0180 (0.0603)	0.0381 (0.0571)	0.0427 (0.0593)	-0.00629 (0.0571)	-0.105** (0.0499)
Disabled × Q4 2021	0.102 (0.0689)	0.125 (0.0874)	0.156* (0.0804)	0.0693 (0.0697)	0.103* (0.0556)	0.124** (0.0537)	0.128** (0.0571)	0.0792 (0.0523)	-0.0191 (0.0389)
Disabled × Q1 2022	0.0727 (0.0646)	0.0959 (0.0813)	0.127 (0.0773)	0.0401 (0.0654)	0.0743 (0.0524)	0.0945* (0.0550)	0.0990* (0.0556)	0.0501 (0.0530)	-0.0482 (0.0438)
Disabled × Q2 2022	0.0770 (0.0599)	0.100 (0.0752)	0.131* (0.0705)	0.0444 (0.0591)	0.0787 (0.0512)	0.0988** (0.0468)	0.103** (0.0502)	0.0544 (0.0531)	-0.0439 (0.0411)
Observations	240	240	240	240	240	240	240	240	240

\*  $p < 0.10$ , \*\*  $p < 0.05$ , \*\*\*  $p < 0.01$  Standard errors in parentheses. Outcome is  $\ln(\text{employed at work in non-essential job}/\text{population})$ . Interaction coefficients are relative to Q1 2019. Models include demographic controls for age, gender, race, and education attainment of Bachelor's degree and are weighted by working age (18-64) population size, as calculated from CPS data.

Table B4. Logged Employment Outcome: Coefficients for Disability x Quarter Interactions for Teleworkable, By Reference Quarter

	Reference Quarter								
	(1)	(2)	(3)	(4)	(5)	(6)	(7)	(8)	(9)
	Q1 18	Q2 18	Q3 18	Q4 18	Q1 19	Q2 19	Q3 19	Q4 19	Q1 20
Disabled × Q1 2020	0.0173 (0.0439)	0.0952 (0.0688)	0.0884 (0.0593)	0.0714** (0.0350)	0.0554** (0.0240)	0.0795** (0.0323)	0.0575 (0.0427)	0.126*** (0.0290)	
Disabled × Q2 2020	0.0182 (0.0816)	0.0961 (0.105)	0.0893 (0.0850)	0.0723 (0.0743)	0.0562 (0.0617)	0.0803 (0.0714)	0.0583 (0.0729)	0.127** (0.0500)	0.000873 (0.0520)
Disabled × Q3 2020	-0.0235 (0.0726)	0.0544 (0.0969)	0.0475 (0.0797)	0.0306 (0.0675)	0.0145 (0.0519)	0.0386 (0.0588)	0.0166 (0.0664)	0.0852* (0.0440)	-0.0409 (0.0451)
Disabled × Q4 2020	-0.0125 (0.0569)	0.0654 (0.0833)	0.0586 (0.0582)	0.0416 (0.0512)	0.0255 (0.0480)	0.0496 (0.0499)	0.0276 (0.0524)	0.0962*** (0.0315)	-0.0298 (0.0339)
Disabled × Q1 2021	0.0251 (0.0684)	0.103 (0.0923)	0.0962 (0.0727)	0.0793 (0.0603)	0.0632 (0.0510)	0.0873 (0.0598)	0.0653 (0.0609)	0.134*** (0.0394)	0.00784 (0.0395)
Disabled × Q2 2021	0.0409 (0.0545)	0.119 (0.0783)	0.112 (0.0677)	0.0950** (0.0453)	0.0789** (0.0345)	0.103*** (0.0393)	0.0810 (0.0502)	0.150*** (0.0320)	0.0236 (0.0259)
Disabled × Q3 2021	0.0924 (0.0652)	0.170** (0.0856)	0.163** (0.0785)	0.147** (0.0599)	0.130** (0.0559)	0.155** (0.0613)	0.133** (0.0644)	0.201*** (0.0555)	0.0751 (0.0526)
Disabled × Q4 2021	0.143** (0.0611)	0.221*** (0.0826)	0.214*** (0.0764)	0.197*** (0.0560)	0.181*** (0.0408)	0.205*** (0.0503)	0.183*** (0.0577)	0.252*** (0.0459)	0.126*** (0.0329)
Disabled × Q1 2022	0.177*** (0.0656)	0.255*** (0.0846)	0.248*** (0.0880)	0.231*** (0.0636)	0.215*** (0.0467)	0.239*** (0.0645)	0.217*** (0.0658)	0.286*** (0.0605)	0.160*** (0.0486)
Disabled × Q2 2022	0.148*** (0.0565)	0.226*** (0.0751)	0.219*** (0.0745)	0.202*** (0.0497)	0.186*** (0.0383)	0.210*** (0.0455)	0.188*** (0.0549)	0.257*** (0.0484)	0.131*** (0.0316)
Observations	240	240	240	240	240	240	240	240	240

\*  $p < 0.10$ , \*\*  $p < 0.05$ , \*\*\*  $p < 0.01$  Standard errors in parentheses. Outcome is  $\ln(\text{employed at work in teleworkable job}/\text{population})$ . Interaction coefficients are relative to Q1 2019. Models include demographic controls for age, gender, race, and education attainment of Bachelor's degree and are weighted by working age (18-64) population size, as calculated from CPS data.

Table B5. Logged Employment Outcome: Coefficients for Disability x Quarter Interactions for Non-Teleworkable, By Reference Quarter

	Reference Quarter								
	(1)	(2)	(3)	(4)	(5)	(6)	(7)	(8)	(9)
	Q1 18	Q2 18	Q3 18	Q4 18	Q1 19	Q2 19	Q3 19	Q4 19	Q1 20
Disabled × Q1 2020	-0.0106 (0.0416)	-0.0105 (0.0569)	0.00531 (0.0498)	-0.0448 (0.0408)	0.00440 (0.0294)	0.0124 (0.0326)	-0.0553* (0.0321)	-0.00622 (0.0341)	
Disabled × Q2 2020	-0.0569 (0.123)	-0.0568 (0.139)	-0.0410 (0.127)	-0.0911 (0.124)	-0.0419 (0.111)	-0.0339 (0.111)	-0.102 (0.113)	-0.0525 (0.0985)	-0.0463 (0.0984)
Disabled × Q3 2020	-0.0882 (0.0855)	-0.0882 (0.102)	-0.0723 (0.0910)	-0.122 (0.0862)	-0.0733 (0.0703)	-0.0652 (0.0708)	-0.133* (0.0724)	-0.0839 (0.0609)	-0.0777 (0.0567)
Disabled × Q4 2020	-0.0333 (0.0464)	-0.0333 (0.0627)	-0.0174 (0.0526)	-0.0675 (0.0473)	-0.0183 (0.0380)	-0.0103 (0.0396)	-0.0781** (0.0367)	-0.0290 (0.0341)	-0.0227 (0.0308)
Disabled × Q1 2021	-0.0511 (0.0737)	-0.0511 (0.0903)	-0.0353 (0.0803)	-0.0854 (0.0727)	-0.0362 (0.0584)	-0.0281 (0.0600)	-0.0959 (0.0598)	-0.0468 (0.0506)	-0.0406 (0.0432)
Disabled × Q2 2021	-0.0472 (0.0614)	-0.0471 (0.0771)	-0.0313 (0.0677)	-0.0814 (0.0613)	-0.0322 (0.0480)	-0.0242 (0.0479)	-0.0919* (0.0494)	-0.0428 (0.0431)	-0.0366 (0.0371)
Disabled × Q3 2021	-0.0110 (0.0697)	-0.0110 (0.0853)	0.00483 (0.0757)	-0.0453 (0.0711)	0.00392 (0.0609)	0.0120 (0.0597)	-0.0558 (0.0600)	-0.00670 (0.0532)	-0.000484 (0.0507)
Disabled × Q4 2021	0.0249 (0.0718)	0.0250 (0.0881)	0.0408 (0.0787)	-0.00928 (0.0725)	0.0399 (0.0570)	0.0479 (0.0573)	-0.0198 (0.0586)	0.0293 (0.0507)	0.0355 (0.0424)
Disabled × Q1 2022	0.00622 (0.0661)	0.00626 (0.0797)	0.0221 (0.0726)	-0.0280 (0.0659)	0.0212 (0.0532)	0.0292 (0.0563)	-0.0386 (0.0550)	0.0106 (0.0506)	0.0168 (0.0459)
Disabled × Q2 2022	0.0586 (0.0511)	0.0586 (0.0658)	0.0745 (0.0588)	0.0244 (0.0495)	0.0736** (0.0365)	0.0816** (0.0381)	0.0138 (0.0384)	0.0629* (0.0378)	0.0692** (0.0278)
Observations	240	240	240	240	240	240	240	240	240

\*  $p < 0.10$ , \*\*  $p < 0.05$ , \*\*\*  $p < 0.01$  Standard errors in parentheses. Outcome is  $\ln(\text{employed at work in non-teleworkable job}/\text{population})$ . Interaction coefficients are relative to Q1 2019. Models include demographic controls for age, gender, race, and education attainment of Bachelor's degree and are weighted by working age (18-64) population size, as calculated from CPS data.

Table B6. Logged Employment Outcome: Coefficients for Disability x Quarter Interactions for Frontline, By Reference Quarter

	Reference Quarter								
	(1)	(2)	(3)	(4)	(5)	(6)	(7)	(8)	(9)
	Q1 18	Q2 18	Q3 18	Q4 18	Q1 19	Q2 19	Q3 19	Q4 19	Q1 20
Disabled × Q1 2020	-0.0573 (0.0395)	-0.0614 (0.0501)	-0.0468 (0.0428)	-0.0832** (0.0387)	-0.0326 (0.0313)	-0.0262 (0.0384)	-0.115*** (0.0313)	-0.0510 (0.0408)	
Disabled × Q2 2020	-0.105 (0.0998)	-0.109 (0.113)	-0.0941 (0.102)	-0.130 (0.101)	-0.0799 (0.0904)	-0.0735 (0.0934)	-0.162* (0.0906)	-0.0983 (0.0816)	-0.0473 (0.0797)
Disabled × Q3 2020	-0.110 (0.0756)	-0.114 (0.0878)	-0.0995 (0.0771)	-0.136* (0.0757)	-0.0853 (0.0631)	-0.0789 (0.0664)	-0.168*** (0.0635)	-0.104* (0.0586)	-0.0527 (0.0523)
Disabled × Q4 2020	-0.0460 (0.0491)	-0.0501 (0.0601)	-0.0355 (0.0485)	-0.0719 (0.0487)	-0.0213 (0.0441)	-0.0149 (0.0489)	-0.103** (0.0401)	-0.0397 (0.0440)	0.0113 (0.0377)
Disabled × Q1 2021	-0.0808 (0.0638)	-0.0849 (0.0765)	-0.0703 (0.0657)	-0.107* (0.0622)	-0.0561 (0.0520)	-0.0497 (0.0578)	-0.138*** (0.0510)	-0.0745 (0.0477)	-0.0235 (0.0408)
Disabled × Q2 2021	-0.0643 (0.0549)	-0.0683 (0.0658)	-0.0538 (0.0565)	-0.0901* (0.0534)	-0.0396 (0.0444)	-0.0331 (0.0477)	-0.122*** (0.0431)	-0.0580 (0.0455)	-0.00696 (0.0375)
Disabled × Q3 2021	-0.000841 (0.0602)	-0.00490 (0.0718)	0.00969 (0.0634)	-0.0267 (0.0606)	0.0239 (0.0532)	0.0303 (0.0559)	-0.0583 (0.0509)	0.00548 (0.0522)	0.0565 (0.0454)
Disabled × Q4 2021	-0.00461 (0.0649)	-0.00867 (0.0764)	0.00592 (0.0682)	-0.0305 (0.0651)	0.0201 (0.0534)	0.0265 (0.0571)	-0.0621 (0.0526)	0.00172 (0.0530)	0.0527 (0.0423)
Disabled × Q1 2022	-0.0317 (0.0760)	-0.0358 (0.0845)	-0.0212 (0.0791)	-0.0576 (0.0754)	-0.00696 (0.0676)	-0.000550 (0.0734)	-0.0892 (0.0663)	-0.0254 (0.0680)	0.0256 (0.0616)
Disabled × Q2 2022	0.0503 (0.0479)	0.0462 (0.0579)	0.0608 (0.0510)	0.0244 (0.0456)	0.0750** (0.0365)	0.0814* (0.0427)	-0.00716 (0.0349)	0.0566 (0.0424)	0.108*** (0.0312)
Observations	240	240	240	240	240	240	240	240	240

\*  $p < 0.10$ , \*\*  $p < 0.05$ , \*\*\*  $p < 0.01$  Standard errors in parentheses. Outcome is  $\ln(\text{employed at work in frontline job}/\text{population})$ . Interaction coefficients are relative to Q1 2019. Models include demographic controls for age, gender, race, and education attainment of Bachelor's degree and are weighted by working age (18-64) population size, as calculated from CPS data.

Table B7. Logged Employment Outcome: Coefficients for Disability x Quarter Interactions for Non-Frontline, By Reference Quarter

	Reference Quarter								
	(1)	(2)	(3)	(4)	(5)	(6)	(7)	(8)	(9)
	Q1 18	Q2 18	Q3 18	Q4 18	Q1 19	Q2 19	Q3 19	Q4 19	Q1 20
Disabled × Q1 2020	0.0700*	0.131**	0.121**	0.0856***	0.0886***	0.100***	0.0919**	0.142***	
	(0.0377)	(0.0597)	(0.0539)	(0.0324)	(0.0232)	(0.0286)	(0.0396)	(0.0263)	
Disabled × Q2 2020	0.0557	0.117	0.106	0.0713	0.0742	0.0859	0.0776	0.128**	-0.0143
	(0.0875)	(0.107)	(0.0921)	(0.0835)	(0.0716)	(0.0766)	(0.0807)	(0.0612)	(0.0622)
Disabled × Q3 2020	-0.0205	0.0405	0.0301	-0.00491	-0.00192	0.00975	0.00140	0.0516	-0.0905*
	(0.0705)	(0.0906)	(0.0781)	(0.0672)	(0.0530)	(0.0576)	(0.0655)	(0.0468)	(0.0463)
Disabled × Q4 2020	0.00101	0.0620	0.0516	0.0166	0.0196	0.0312	0.0229	0.0731**	-0.0690**
	(0.0474)	(0.0699)	(0.0537)	(0.0439)	(0.0412)	(0.0421)	(0.0467)	(0.0287)	(0.0309)
Disabled × Q1 2021	0.0339	0.0949	0.0844	0.0494	0.0524	0.0641	0.0557	0.106**	-0.0361
	(0.0654)	(0.0855)	(0.0719)	(0.0598)	(0.0498)	(0.0551)	(0.0598)	(0.0406)	(0.0400)
Disabled × Q2 2021	0.0326	0.0936	0.0832	0.0482	0.0512	0.0628*	0.0545	0.105***	-0.0374
	(0.0494)	(0.0704)	(0.0629)	(0.0436)	(0.0330)	(0.0360)	(0.0473)	(0.0298)	(0.0256)
Disabled × Q3 2021	0.0635	0.125	0.114	0.0791	0.0821	0.0937	0.0854	0.136***	-0.00649
	(0.0615)	(0.0791)	(0.0727)	(0.0587)	(0.0548)	(0.0568)	(0.0619)	(0.0519)	(0.0512)
Disabled × Q4 2021	0.143**	0.204**	0.193***	0.158***	0.161***	0.173***	0.165***	0.215***	0.0729**
	(0.0601)	(0.0785)	(0.0724)	(0.0571)	(0.0436)	(0.0489)	(0.0570)	(0.0446)	(0.0355)
Disabled × Q1 2022	0.172***	0.233***	0.222***	0.187***	0.190***	0.202***	0.194***	0.244***	0.102**
	(0.0606)	(0.0772)	(0.0770)	(0.0590)	(0.0441)	(0.0561)	(0.0598)	(0.0521)	(0.0438)
Disabled × Q2 2022	0.151***	0.212***	0.201***	0.166***	0.169***	0.181***	0.173***	0.223***	0.0807***
	(0.0502)	(0.0673)	(0.0668)	(0.0460)	(0.0355)	(0.0401)	(0.0501)	(0.0420)	(0.0299)
Observations	240	240	240	240	240	240	240	240	240

\*  $p < 0.10$ , \*\*  $p < 0.05$ , \*\*\*  $p < 0.01$  Standard errors in parentheses. Outcome is  $\ln(\text{employed at work in non-frontline job/population})$ . Interaction coefficients are relative to Q1 2019. Models include demographic controls for age, gender, race, and education attainment of Bachelor's degree and are weighted by working age (18-64) population size, as calculated from CPS data.



# Appendix C

Figure C1

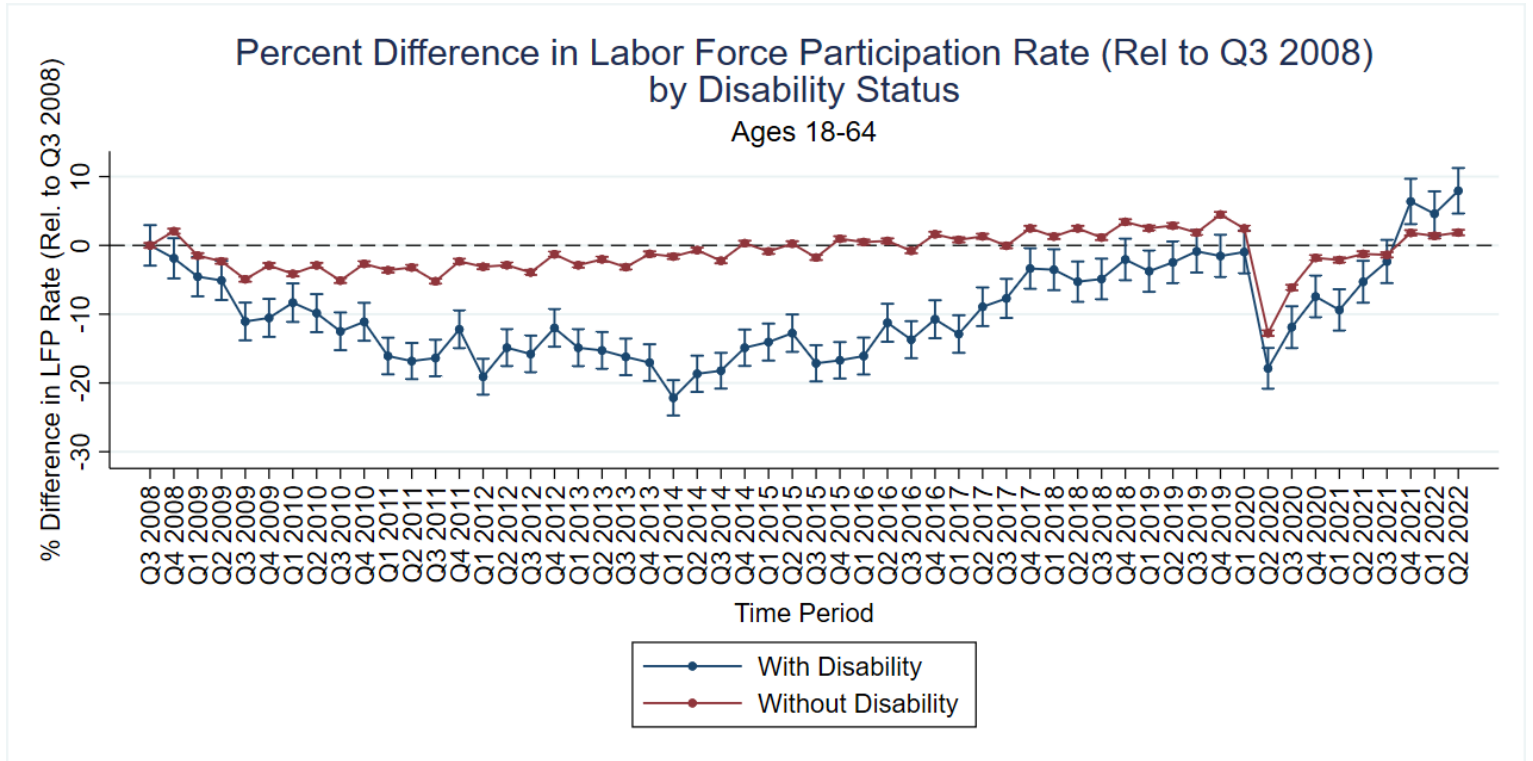


Figure C2

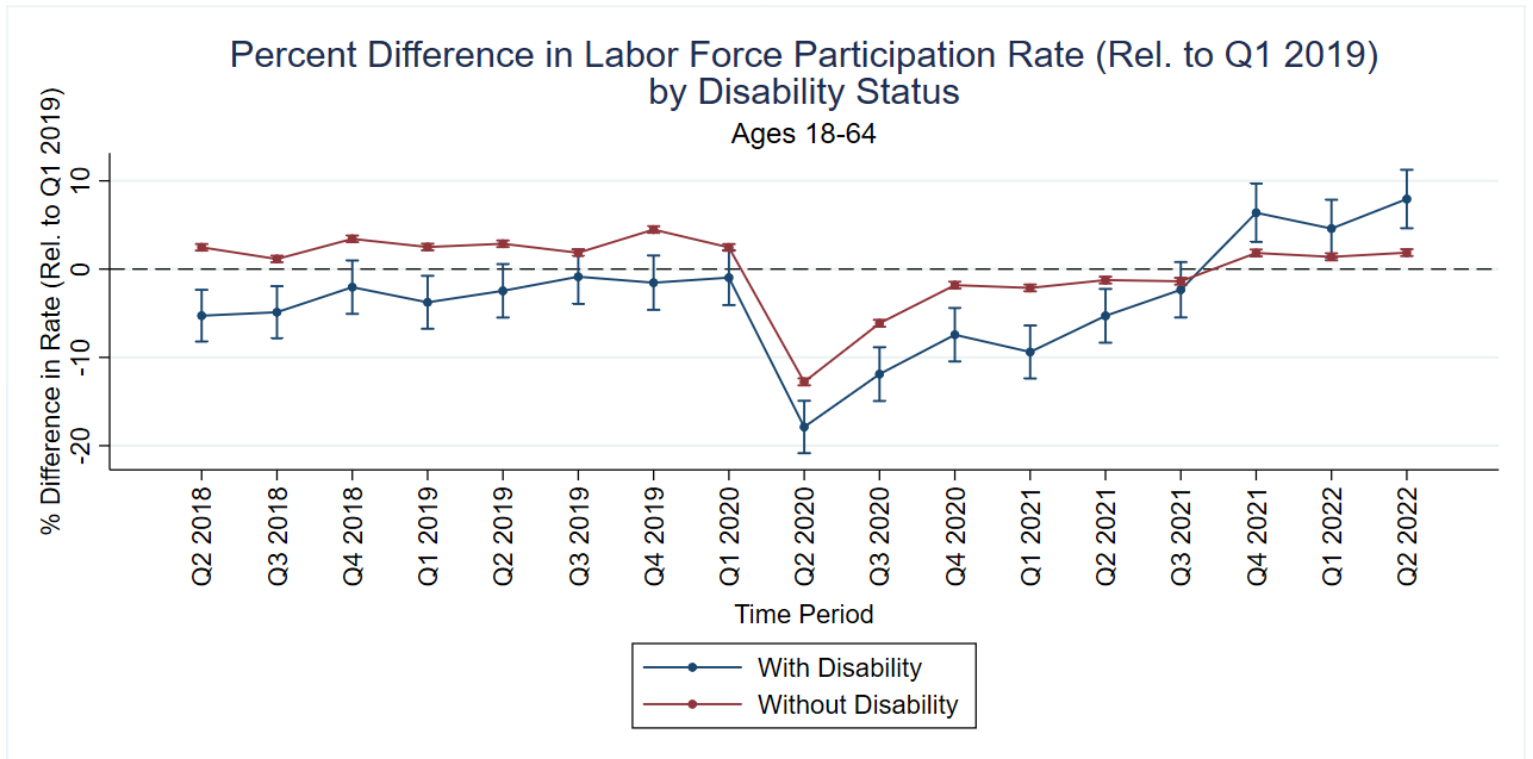


Table C1. Logged Labor Force Participation Outcome: Coefficients for Disability x Quarter Interactions

Disabled	-0.512*** (0.0925)
Disabled × Q1 2020	0.00442 (0.0125)
Disabled × Q2 2020	0.0288 (0.0246)
Disabled × Q3 2020	-0.0209 (0.0164)
Disabled × Q4 2020	-0.00111 (0.0121)
Disabled × Q1 2021	0.000718 (0.0147)
Disabled × Q2 2021	0.0119 (0.0183)
Disabled × Q3 2021	0.0503** (0.0221)
Disabled × Q4 2021	0.0792*** (0.0169)
Disabled × Q1 2022	0.0703*** (0.0191)
Disabled × Q2 2022	0.0906*** (0.0179)
Constant	-1.054*** (0.338)
Observations	240

\*  $p < 0.10$ , \*\*  $p < 0.05$ , \*\*\*  $p < 0.01$  Standard errors in parentheses. Outcome is  $\ln(\text{labor force participation rate})$ . Interaction coefficients are relative to Q1 2019. Models include demographic controls for age, gender, race, and education attainment of Bachelor's degree and are weighted by working age (18-64) population size, as calculated from CPS data.

# Appendix D

Figure D1

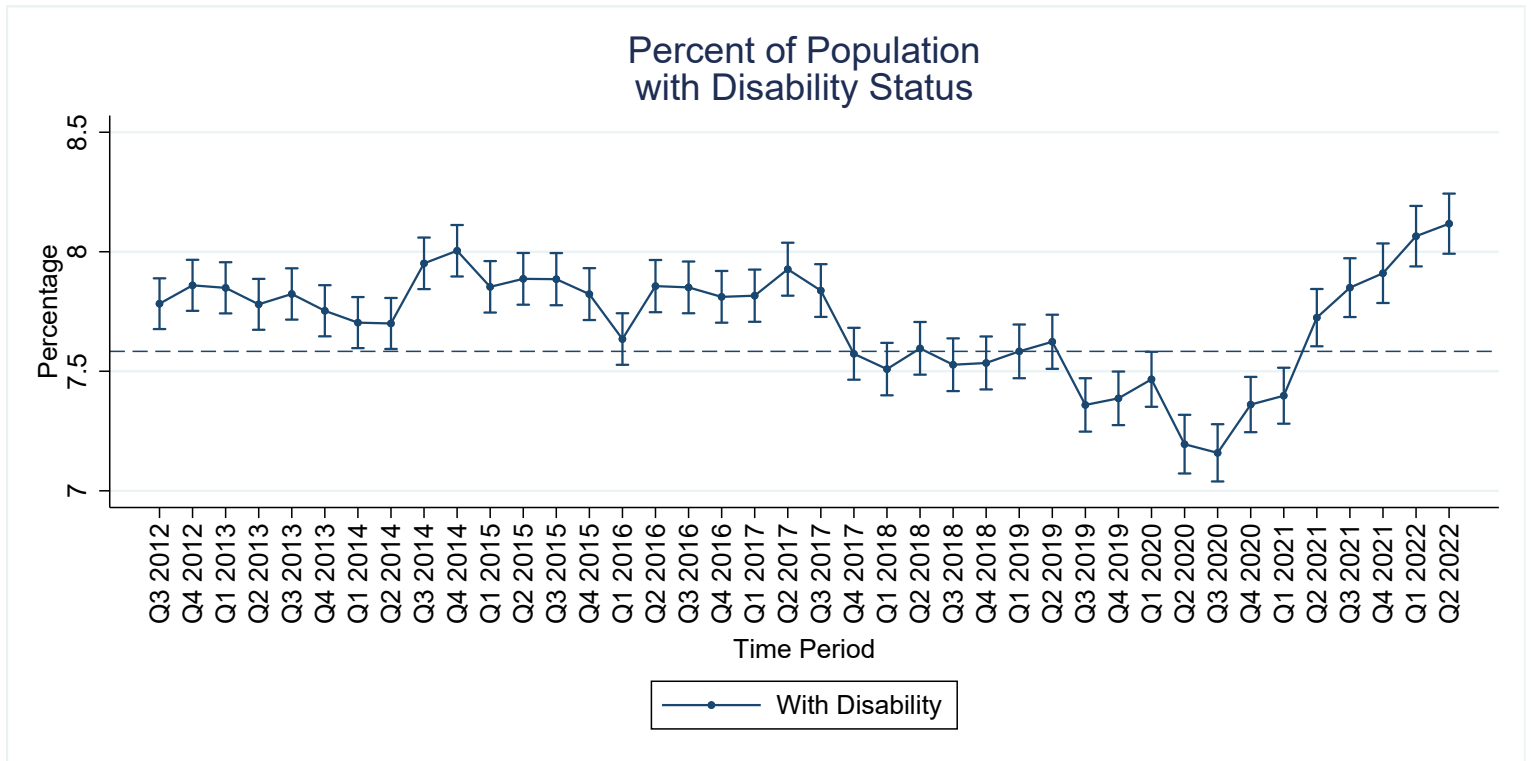


Figure D2

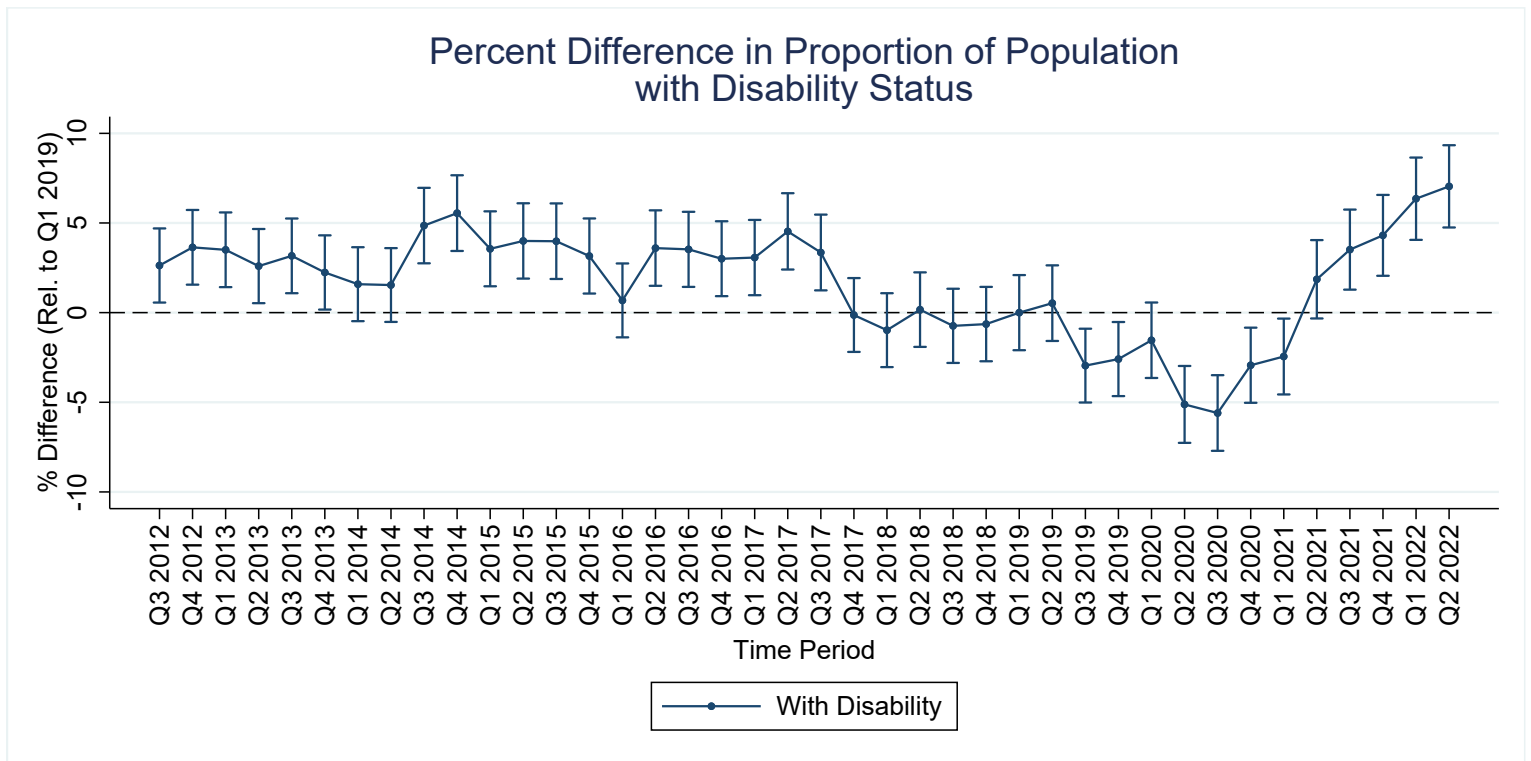


Figure D3

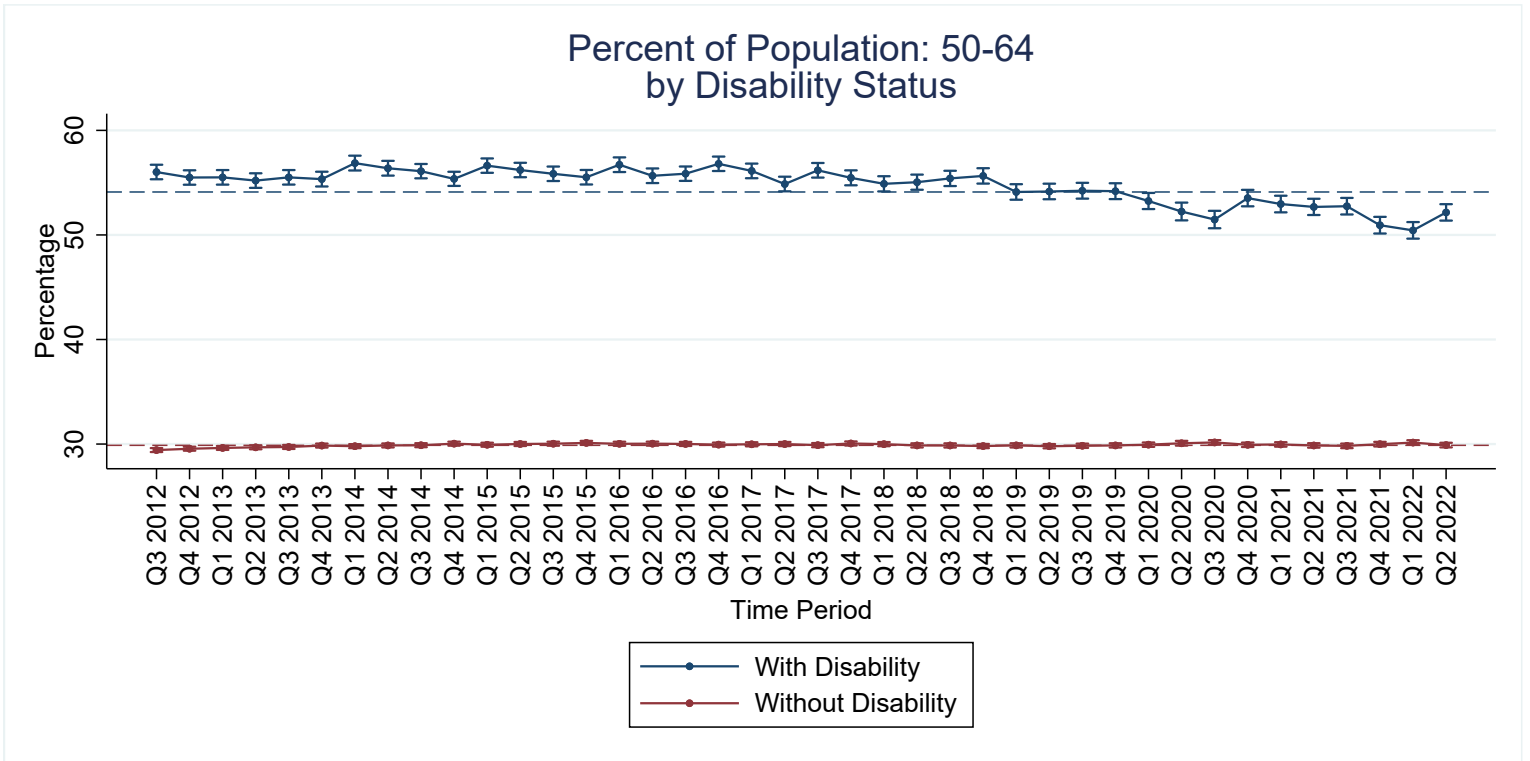


Figure D4

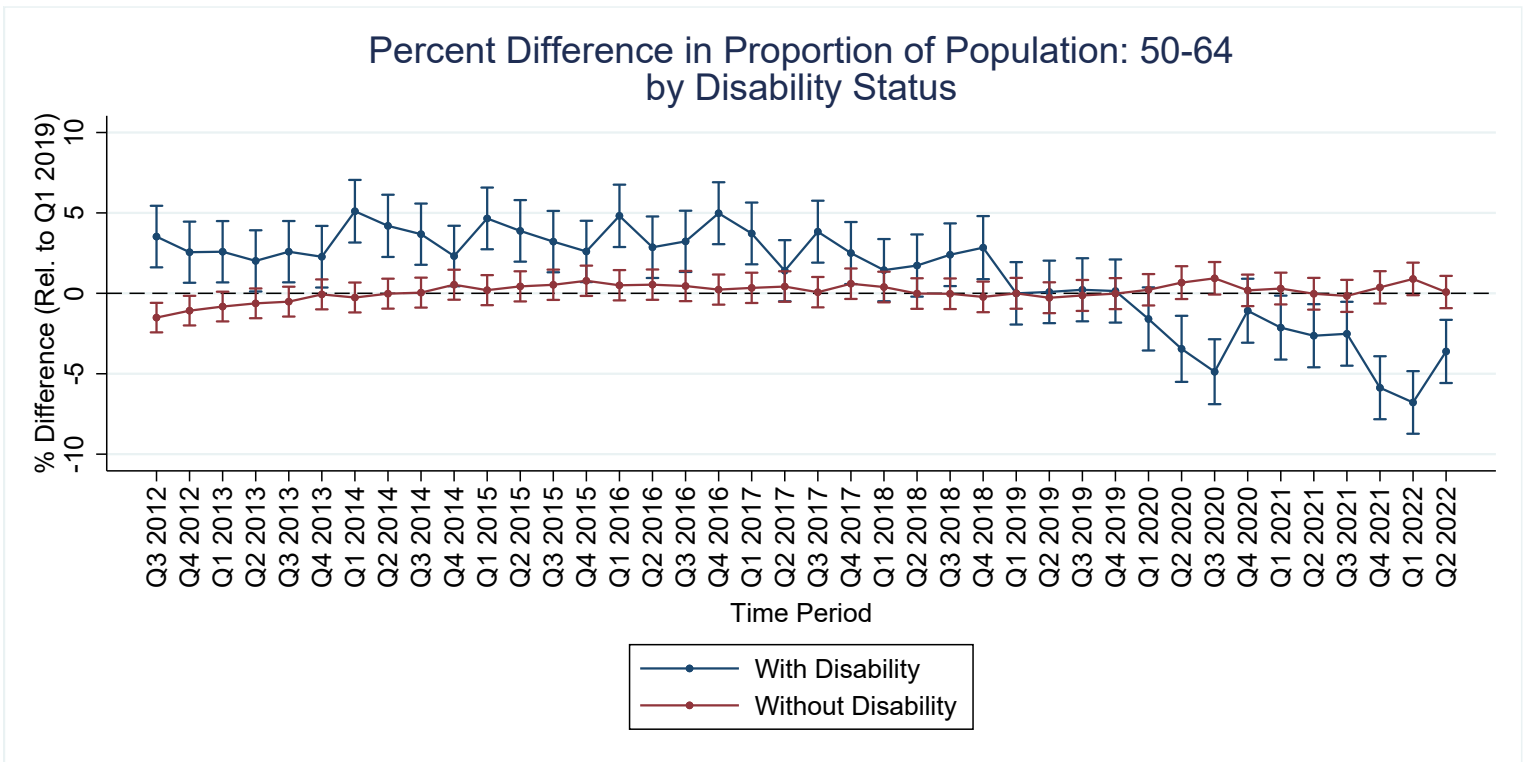


Figure D5

### Percent of Population: Male by Disability Status Ages 18-64

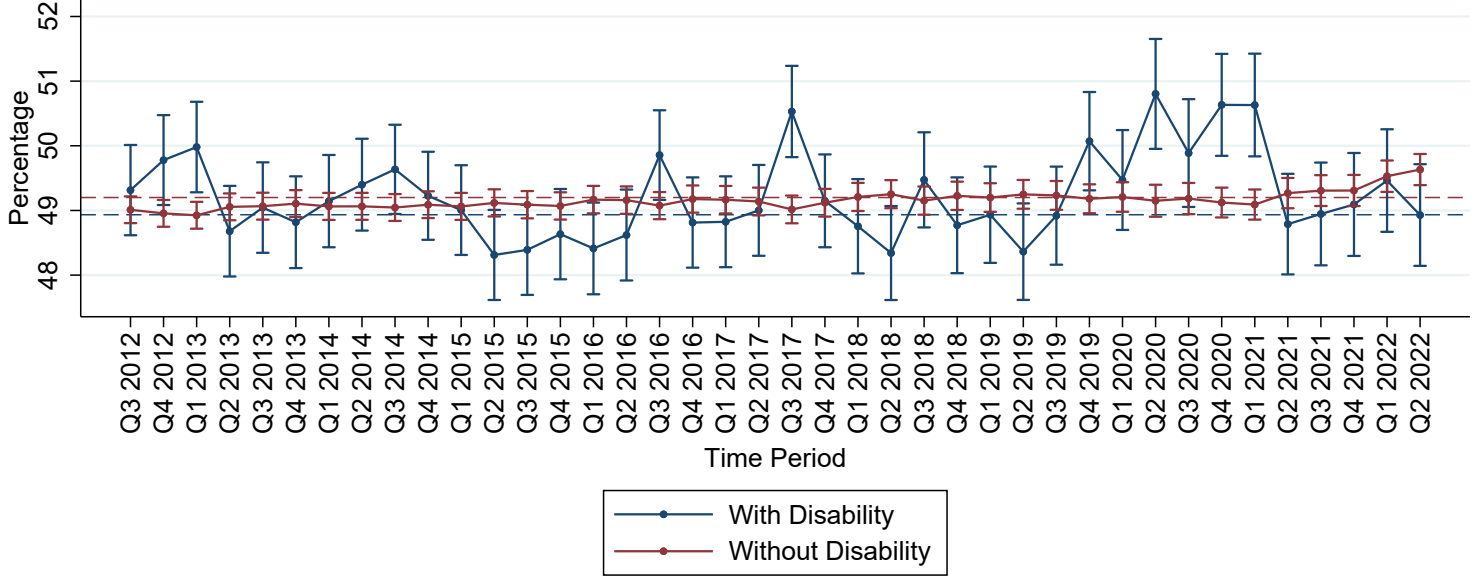


Figure D6

### Percent Difference in Proportion of Population: Male by Disability Status Ages 18-64

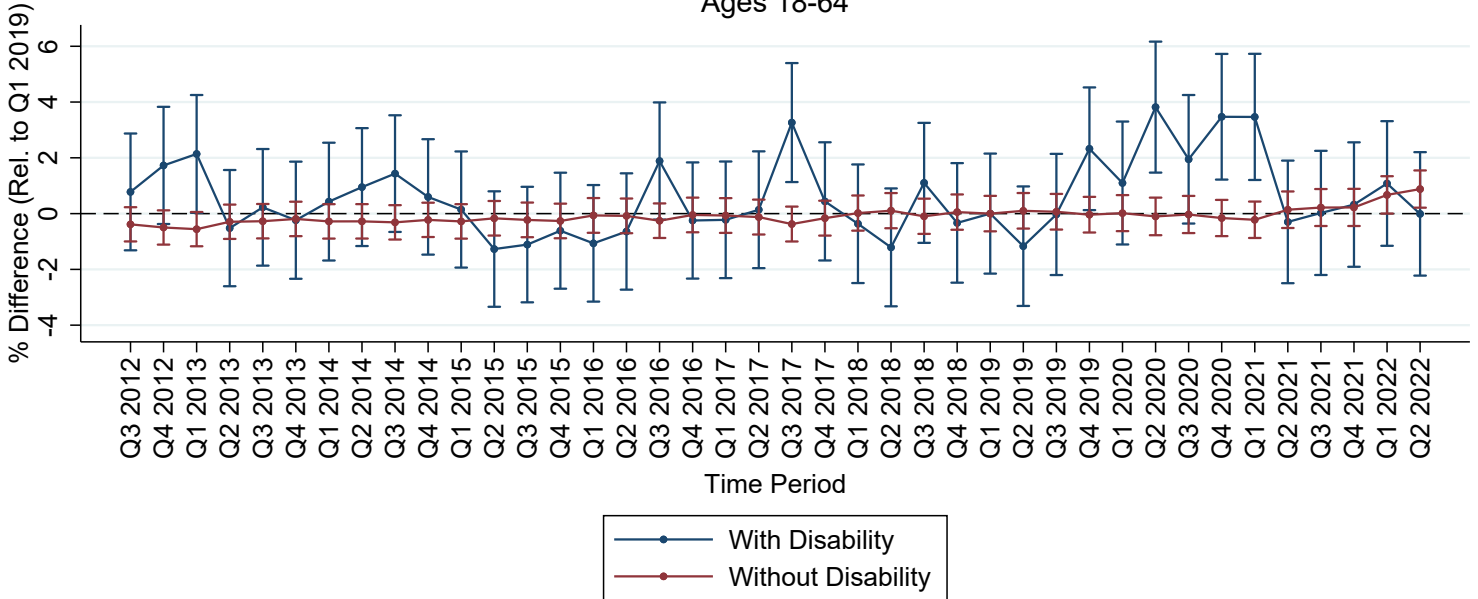


Figure D7

### Percent of Population: Hispanic by Disability Status Ages 18-64

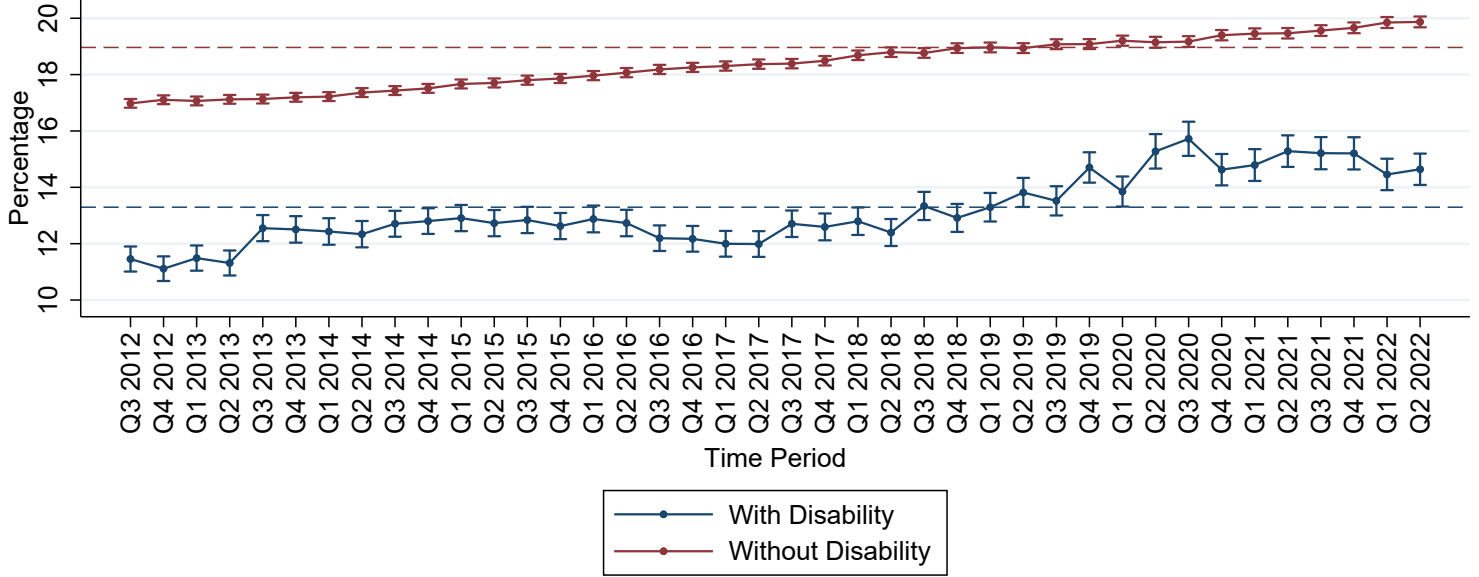


Figure D8

### Percent Difference in Proportion of Population: Hispanic by Disability Status Ages 18-64

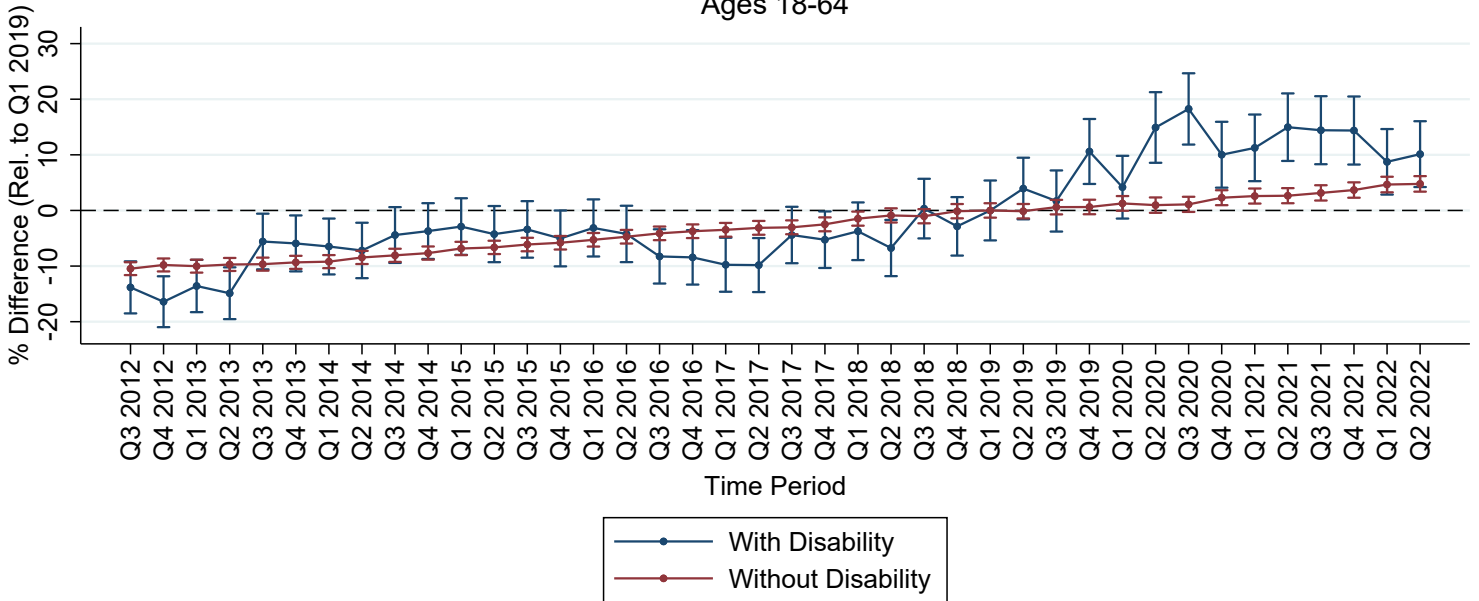


Table D1. Proportion of Sample with Disability Outcome: Quarter-Level Coefficients, By Disability Type

	(1)	(2)	(3)	(4)	(5)	(6)	(7)
	Any	Hearing	Vision	Remembering	Physical	Mobility	Personal Care
Q2 2018	0.000127 (0.000744)	-0.0000738 (0.000263)	0.000144 (0.000259)	0.0000542 (0.000389)	0.000481 (0.000489)	-0.000311 (0.000440)	0.000572*** (0.000189)
Q3 2018	-0.000560 (0.000902)	0.00106*** (0.000271)	-0.000370 (0.000261)	-0.000786** (0.000381)	-0.000663 (0.000477)	0.000358 (0.000442)	0.000607*** (0.000191)
Q4 2018	-0.000485 (0.000723)	0.000443 (0.000323)	-0.000512** (0.000216)	-0.000914** (0.000422)	-0.000751 (0.000463)	-0.000110 (0.000423)	0.0000700 (0.000170)
Q2 2019	0.000401 (0.000742)	-0.000341 (0.000365)	-0.000709*** (0.000255)	0.000254 (0.000407)	0.0000355 (0.000458)	0.00119** (0.000516)	0.000455** (0.000213)
Q3 2019	-0.00224*** (0.000743)	-0.000602 (0.000429)	-0.00136*** (0.000231)	0.000467 (0.000500)	-0.00198*** (0.000468)	-0.000122 (0.000427)	0.000272 (0.000165)
Q4 2019	-0.00196** (0.000967)	-0.000922** (0.000393)	-0.00136*** (0.000221)	0.00115** (0.000436)	-0.00180*** (0.000425)	0.000731 (0.000486)	0.000238 (0.000163)
Q1 2020	-0.00117 (0.000820)	0.0000164 (0.000250)	-0.000636*** (0.000240)	-1.66e-08 (0.000516)	-0.00242*** (0.000463)	0.000151 (0.000459)	0.0000900 (0.000177)
Q2 2020	-0.00388*** (0.000723)	-0.000257 (0.000291)	-0.00171*** (0.000222)	-0.00197*** (0.000380)	-0.00447*** (0.000461)	-0.000692 (0.000473)	-0.000531** (0.000204)
Q3 2020	-0.00426*** (0.000926)	0.000222 (0.000252)	-0.00186*** (0.000239)	-0.00144** (0.000594)	-0.00404*** (0.000584)	-0.000138 (0.000515)	-0.000706*** (0.000215)
Q4 2020	-0.00222** (0.000897)	0.000262 (0.000279)	-0.00180*** (0.000258)	0.000292 (0.000532)	-0.00281*** (0.000478)	-0.000300 (0.000588)	-0.000689*** (0.000227)
Q1 2021	-0.00185** (0.000780)	-0.000283 (0.000323)	-0.00187*** (0.000211)	0.00163*** (0.000535)	-0.00366*** (0.000472)	0.000272 (0.000553)	0.0000990 (0.000352)
Q2 2021	0.00141 (0.00137)	0.000348 (0.000582)	-0.000750* (0.000383)	0.00227*** (0.000626)	-0.00169** (0.000744)	0.00217*** (0.000585)	0.00126*** (0.000190)
Q3 2021	0.00266*** (0.000952)	0.000818** (0.000315)	-0.000526** (0.000261)	0.00297*** (0.000455)	-0.00123* (0.000682)	0.00103 (0.000735)	0.0000316 (0.000415)
Q4 2021	0.00327*** (0.00119)	0.000778* (0.000406)	0.0000901 (0.000393)	0.00334*** (0.000532)	-0.00318*** (0.000416)	0.00115* (0.000659)	-0.000307 (0.000409)
Q1 2022	0.00482*** (0.00107)	0.000813*** (0.000266)	0.000859*** (0.000215)	0.00464*** (0.000849)	-0.00246*** (0.000828)	0.00175*** (0.000433)	0.000427** (0.000214)
Q2 2022	0.00534*** (0.000735)	0.000914*** (0.000331)	0.000344 (0.000265)	0.00652*** (0.000467)	-0.00202*** (0.000513)	0.00228*** (0.000717)	0.000348 (0.000254)
Observations	120	120	120	120	120	120	120

\*  $p < 0.10$ , \*\*  $p < 0.05$ , \*\*\*  $p < 0.01$  Standard errors in parentheses. Outcome is proportion of population with each disability type. Coefficients are relative to Q1 2019. Models are weighted by working age (18-64) population size, as calculated from CPS data, and do not include any demographic controls.

Table D2. Proportion of Sample with Disabilities in Age Group Outcome: Quarter-Level Coefficients, by Age Group

	(1)	(2)	(3)
	18-34	35-49	50-64
Q2 2018	-0.0000793 (0.000118)	-0.000625*** (0.0000551)	0.000704*** (0.000106)
Q3 2018	-0.000663*** (0.000209)	-0.000101 (0.000149)	0.000764*** (0.000107)
Q4 2018	-0.000497*** (0.000177)	0.0000707 (0.0000852)	0.000427*** (0.000119)
Q2 2019	0.000838*** (0.000248)	-0.000215* (0.000111)	-0.000623*** (0.000155)
Q3 2019	0.000941** (0.000431)	-0.000123 (0.000257)	-0.000818*** (0.000186)
Q4 2019	-0.0000571 (0.000240)	0.000527*** (0.000121)	-0.000470*** (0.000137)
Q1 2020	-0.0000280 (0.0000902)	0.000341*** (0.0000600)	-0.000313*** (0.0000707)
Q2 2020	0.000157 (0.000129)	0.000281*** (0.0000946)	-0.000438*** (0.0000727)
Q3 2020	-0.000347** (0.000161)	0.000666*** (0.0000713)	-0.000319*** (0.000116)
Q4 2020	-0.000208* (0.000110)	0.000669*** (0.0000661)	-0.000461*** (0.0000793)
Q1 2021	-0.000345*** (0.000112)	0.000827*** (0.0000653)	-0.000482*** (0.0000890)
Q2 2021	0.00000145 (0.000239)	0.000836*** (0.0000819)	-0.000837*** (0.000179)
Q3 2021	-0.000600 (0.000502)	0.00146*** (0.000338)	-0.000863*** (0.000176)
Q4 2021	-0.00178*** (0.000200)	0.00248*** (0.000161)	-0.000696*** (0.0000915)
Q1 2022	-0.00526*** (0.000122)	0.00460*** (0.0000911)	0.000662*** (0.000110)
Q2 2022	-0.00467*** (0.000158)	0.00475*** (0.0000804)	-0.0000712 (0.000203)
Observations	120	120	120

\*  $p < 0.10$ , \*\*  $p < 0.05$ , \*\*\*  $p < 0.01$  Standard errors in parentheses. Outcome is proportion of sample with disabilities in each age group. Coefficients are relative to Q1 2019. Models are weighted by working age (18-64) population size, as calculated from CPS data, and do not include any demographic controls.



Table D3. Proportion of Sample in Demographic Group Outcome: Coefficients for Disability X Quarter Interactions, By Demographic Group

	Age			Sex	Race		College
	(1)	(2)	(3)	(4)	(5)	(6)	(7)
	18-34	35-49	50-64	Female	Black	Hispanic	BA
Disabled × Q2 2018	-0.0117*** (0.00345)	0.00236 (0.00521)	0.00939*** (0.00185)	0.00644** (0.00295)	-0.00129 (0.00490)	-0.00729** (0.00326)	0.0138*** (0.00210)
Disabled × Q3 2018	-0.0151*** (0.00405)	0.00205 (0.00510)	0.0130*** (0.00407)	-0.00587 (0.00396)	-0.00783 (0.00492)	0.00241 (0.00226)	0.0139*** (0.00193)
Disabled × Q4 2018	-0.00895*** (0.00333)	-0.00709 (0.00507)	0.0160*** (0.00184)	0.00190 (0.00285)	-0.00351 (0.00568)	-0.00355 (0.00240)	0.00736*** (0.00262)
Disabled × Q2 2019	-0.00661 (0.00424)	0.00531 (0.00561)	0.00130 (0.00183)	0.00620* (0.00366)	-0.00596 (0.00487)	0.00549* (0.00330)	0.00119 (0.00221)
Disabled × Q3 2019	0.00124 (0.00338)	-0.00282 (0.00512)	0.00158 (0.00201)	0.000492 (0.00509)	-0.00597 (0.00487)	0.00113 (0.00230)	0.00871*** (0.00193)
Disabled × Q4 2019	0.00110 (0.00418)	-0.00192 (0.00682)	0.000824 (0.00476)	-0.0116*** (0.00303)	-0.00692 (0.00501)	0.0129*** (0.00321)	0.00746*** (0.00205)
Disabled × Q1 2020	0.00734* (0.00408)	0.00200 (0.00558)	-0.00934** (0.00397)	-0.00526 (0.00330)	-0.00238 (0.00647)	0.00319 (0.00263)	-0.000818 (0.00219)
Disabled × Q2 2020	0.0296*** (0.00558)	-0.00895* (0.00501)	-0.0207*** (0.00480)	-0.0192*** (0.00333)	-0.00325 (0.00516)	0.0180*** (0.00677)	-0.0158*** (0.00349)
Disabled × Q3 2020	0.0265*** (0.00665)	0.00279 (0.00524)	-0.0293*** (0.00569)	-0.00969*** (0.00345)	-0.00984* (0.00575)	0.0223*** (0.00506)	-0.00654 (0.00477)
Disabled × Q4 2020	0.00496 (0.00423)	0.00144 (0.00592)	-0.00640*** (0.00187)	-0.0178*** (0.00515)	-0.00306 (0.00483)	0.00898*** (0.00228)	0.00890*** (0.00230)
Disabled × Q1 2021	0.0223*** (0.00683)	-0.00985* (0.00516)	-0.0125** (0.00602)	-0.0181*** (0.00437)	-0.00591 (0.00539)	0.0100*** (0.00313)	-0.00697** (0.00328)
Disabled × Q2 2021	0.0197*** (0.00496)	-0.00553 (0.00581)	-0.0142*** (0.00330)	0.00214 (0.00296)	-0.0123** (0.00509)	0.0149*** (0.00288)	0.00355 (0.00450)
Disabled × Q3 2021	0.0223*** (0.00372)	-0.00923* (0.00503)	-0.0131*** (0.00255)	0.000954 (0.00275)	0.00143 (0.00514)	0.0132*** (0.00289)	0.0122*** (0.00139)
Disabled × Q4 2021	0.0326*** (0.00478)	0.000299 (0.00619)	-0.0329*** (0.00696)	-0.000495 (0.00301)	-0.00681 (0.00582)	0.0121*** (0.00245)	-0.000442 (0.00176)
Disabled × Q1 2022	0.0437*** (0.00527)	-0.00435 (0.00530)	-0.0394*** (0.00342)	-0.00198 (0.00306)	-0.00826 (0.00504)	0.00279 (0.00240)	0.00649** (0.00309)
Disabled × Q2 2022	0.0231*** (0.00427)	-0.00328 (0.00585)	-0.0198*** (0.00590)	0.00437 (0.00332)	-0.0143*** (0.00479)	0.00440 (0.00306)	0.00233* (0.00134)
Observations	240	240	240	240	240	240	240

\*  $p < 0.10$ , \*\*  $p < 0.05$ , \*\*\*  $p < 0.01$  Standard errors in parentheses. Outcome is proportion of sample, subset by disability status, in demographic group. Interaction coefficients are relative to Q1 2019. Models are weighted by working age (18-64) population size, as calculated from CPS data, and do not include any demographic controls.

# Appendix E

Figure E1

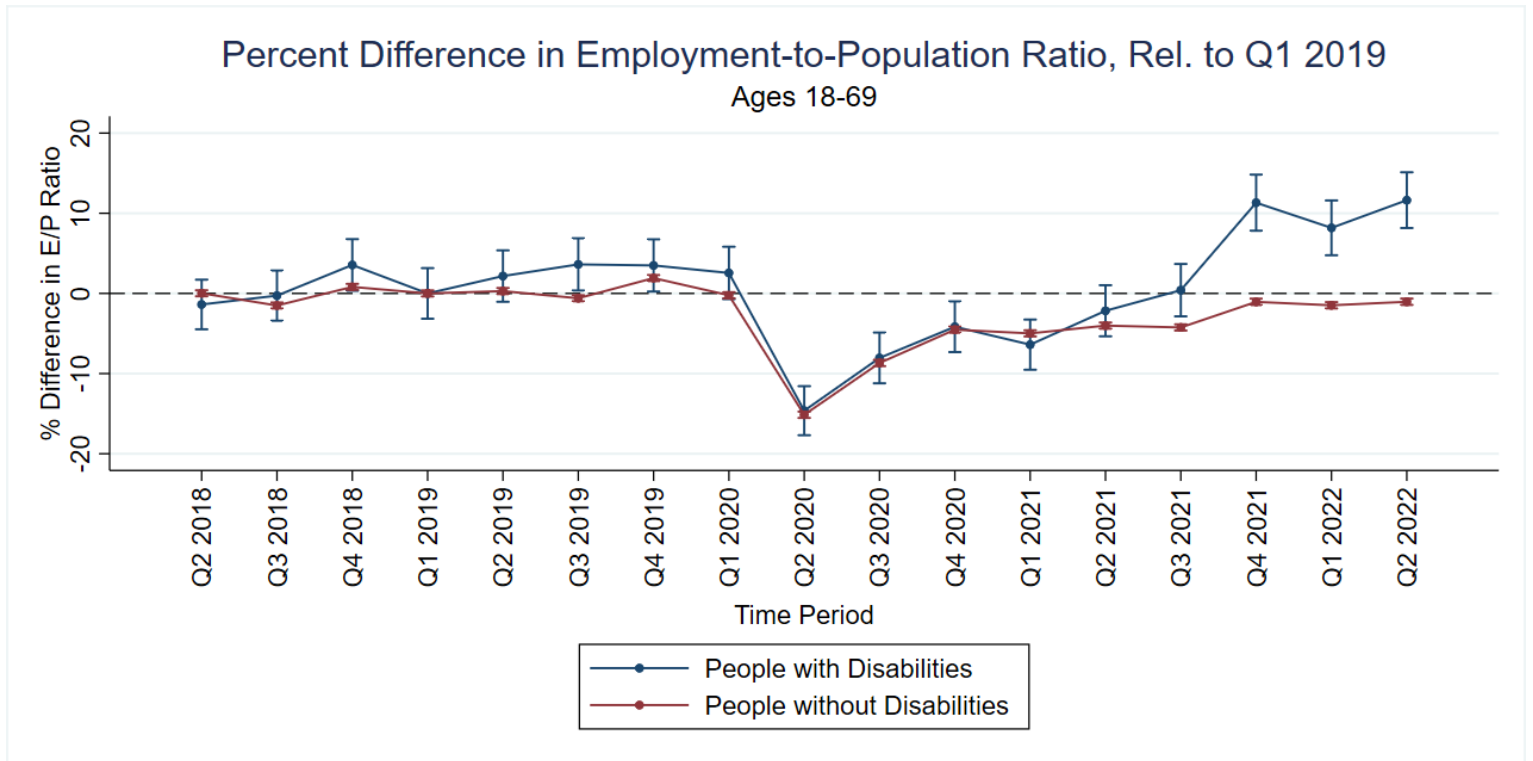


Table E1. Logged Employment Outcome: Coefficients for Disability x Quarter Interactions, By Occupational Category (Ages 18-69)

	(1)	(2)	(3)	(4)	(5)	(6)	(7)
	Emp At Work	Essential	Non-Ess.	Teleworkable	Non-Tele.	Frontline	Non-Front.
Disabled	-0.745** (0.320)	-0.905*** (0.341)	-0.406 (0.439)	-1.383*** (0.453)	-0.240 (0.367)	-0.392 (0.328)	-1.039** (0.404)
Disabled × Q1 2020	0.0263 (0.0195)	-0.0111 (0.0221)	0.113*** (0.0269)	0.0457 (0.0310)	0.00189 (0.0286)	-0.0364 (0.0308)	0.0830*** (0.0271)
Disabled × Q2 2020	0.0122 (0.0695)	-0.00681 (0.0616)	0.0512 (0.0990)	0.0409 (0.0580)	-0.0169 (0.109)	-0.0423 (0.0870)	0.0650 (0.0672)
Disabled × Q3 2020	-0.0196 (0.0448)	-0.0145 (0.0475)	-0.0359 (0.0540)	0.0270 (0.0464)	-0.0497 (0.0622)	-0.0611 (0.0570)	0.0201 (0.0468)
Disabled × Q4 2020	-0.00140 (0.0297)	0.0164 (0.0352)	-0.0519 (0.0349)	0.00706 (0.0472)	-0.0120 (0.0378)	-0.00571 (0.0417)	0.00510 (0.0397)
Disabled × Q1 2021	-0.00701 (0.0346)	-0.0250 (0.0369)	0.0357 (0.0508)	0.0398 (0.0562)	-0.0380 (0.0411)	-0.0573 (0.0394)	0.0412 (0.0492)
Disabled × Q2 2021	-0.00555 (0.0313)	-0.0300 (0.0368)	0.0532 (0.0422)	0.0669 (0.0491)	-0.0526 (0.0424)	-0.0684 (0.0414)	0.0529 (0.0393)
Disabled × Q3 2021	0.0447 (0.0459)	0.0558 (0.0486)	0.0206 (0.0546)	0.119** (0.0558)	-0.00944 (0.0545)	0.00151 (0.0490)	0.0820 (0.0520)
Disabled × Q4 2021	0.109*** (0.0335)	0.106*** (0.0377)	0.118** (0.0462)	0.197*** (0.0557)	0.0450 (0.0421)	0.0260 (0.0434)	0.182*** (0.0481)
Disabled × Q1 2022	0.110*** (0.0368)	0.125** (0.0487)	0.0760 (0.0558)	0.228*** (0.0548)	0.0276 (0.0467)	0.00451 (0.0640)	0.202*** (0.0495)
Disabled × Q2 2022	0.122*** (0.0277)	0.143*** (0.0327)	0.0704 (0.0464)	0.174*** (0.0496)	0.0715** (0.0286)	0.0764** (0.0309)	0.162*** (0.0409)
Constant	-1.585 (1.628)	-1.714 (1.792)	-3.128 (2.134)	-2.486 (2.683)	-2.390 (1.629)	-2.712 (1.731)	-2.021 (2.273)
Observations	240	240	240	240	240	240	240

\*  $p < 0.10$ , \*\*  $p < 0.05$ , \*\*\*  $p < 0.01$  Standard errors in parentheses. Outcome is  $\ln(\text{employed at work in [occupation type]}/\text{population})$ . Interaction coefficients are relative to Q1 2019. Models include demographic controls for age, gender, race, and education attainment of Bachelor's degree and are weighted by alternative working age (18-69) population size, as calculated from CPS data.

Figure E2

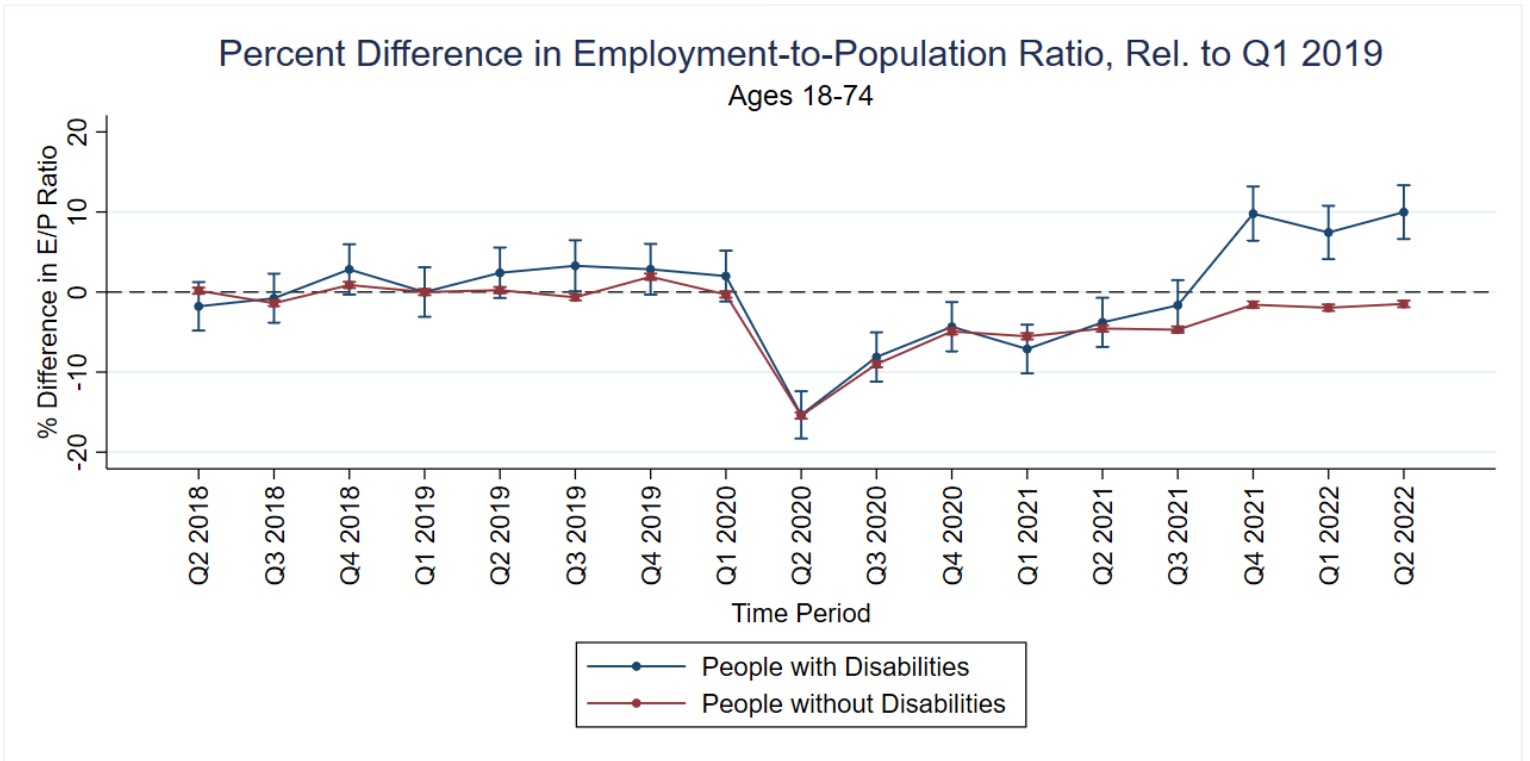


Table E2. Logged Employment Outcome: Coefficients for Disability x Quarter Interactions, By Occupational Category (Ages 18-74)

	(1)	(2)	(3)	(4)	(5)	(6)	(7)
	Emp At Work	Essential	Non-Ess.	Teleworkable	Non-Tele.	Frontline	Non-Front.
Disabled	-1.217*** (0.432)	-1.461*** (0.477)	-0.708 (0.466)	-2.003*** (0.631)	-0.527 (0.494)	-0.722 (0.455)	-1.586*** (0.528)
Disabled × Q1 2020	0.0270 (0.0208)	-0.000999 (0.0252)	0.0877*** (0.0250)	0.0615* (0.0365)	-0.000809 (0.0264)	-0.0316 (0.0295)	0.0789*** (0.0302)
Disabled × Q2 2020	0.0180 (0.0707)	0.0106 (0.0658)	0.0303 (0.0902)	0.0690 (0.0563)	-0.0179 (0.106)	-0.0340 (0.0876)	0.0674 (0.0667)
Disabled × Q3 2020	-0.00668 (0.0466)	0.00977 (0.0474)	-0.0491 (0.0555)	0.0646 (0.0450)	-0.0483 (0.0645)	-0.0576 (0.0571)	0.0396 (0.0484)
Disabled × Q4 2020	0.0213 (0.0227)	0.0487* (0.0277)	-0.0485 (0.0295)	0.0697** (0.0317)	-0.0126 (0.0344)	-0.00225 (0.0388)	0.0423 (0.0287)
Disabled × Q1 2021	0.0253 (0.0429)	0.0126 (0.0426)	0.0562 (0.0580)	0.115** (0.0517)	-0.0367 (0.0579)	-0.0527 (0.0516)	0.0925* (0.0506)
Disabled × Q2 2021	0.0202 (0.0355)	0.00917 (0.0379)	0.0467 (0.0449)	0.108*** (0.0385)	-0.0361 (0.0530)	-0.0399 (0.0494)	0.0734** (0.0366)
Disabled × Q3 2021	0.0501 (0.0558)	0.0735 (0.0578)	-0.00243 (0.0621)	0.152** (0.0611)	-0.0216 (0.0669)	0.00599 (0.0599)	0.0858 (0.0602)
Disabled × Q4 2021	0.139*** (0.0509)	0.150*** (0.0517)	0.114* (0.0638)	0.242*** (0.0586)	0.0622 (0.0713)	0.0473 (0.0638)	0.214*** (0.0572)
Disabled × Q1 2022	0.134*** (0.0460)	0.153*** (0.0558)	0.0896 (0.0592)	0.280*** (0.0618)	0.0319 (0.0597)	0.0128 (0.0709)	0.234*** (0.0564)
Disabled × Q2 2022	0.133*** (0.0257)	0.155*** (0.0315)	0.0810** (0.0317)	0.212*** (0.0401)	0.0702** (0.0312)	0.0742** (0.0348)	0.184*** (0.0337)
Constant	0.441 (2.033)	0.893 (2.195)	-2.419 (2.292)	-0.350 (3.103)	-0.848 (2.277)	-0.631 (2.051)	-0.189 (2.584)
Observations	240	240	240	240	240	240	240

\*  $p < 0.10$ , \*\*  $p < 0.05$ , \*\*\*  $p < 0.01$  Standard errors in parentheses. Outcome is  $\ln(\text{employed at work in [occupation type]}/\text{population})$ . Interaction coefficients are relative to Q1 2019. Models include demographic controls for age, gender, race, and education attainment of Bachelor's degree and are weighted by alternative working age (18-74) population size, as calculated from CPS data.

Figure F1

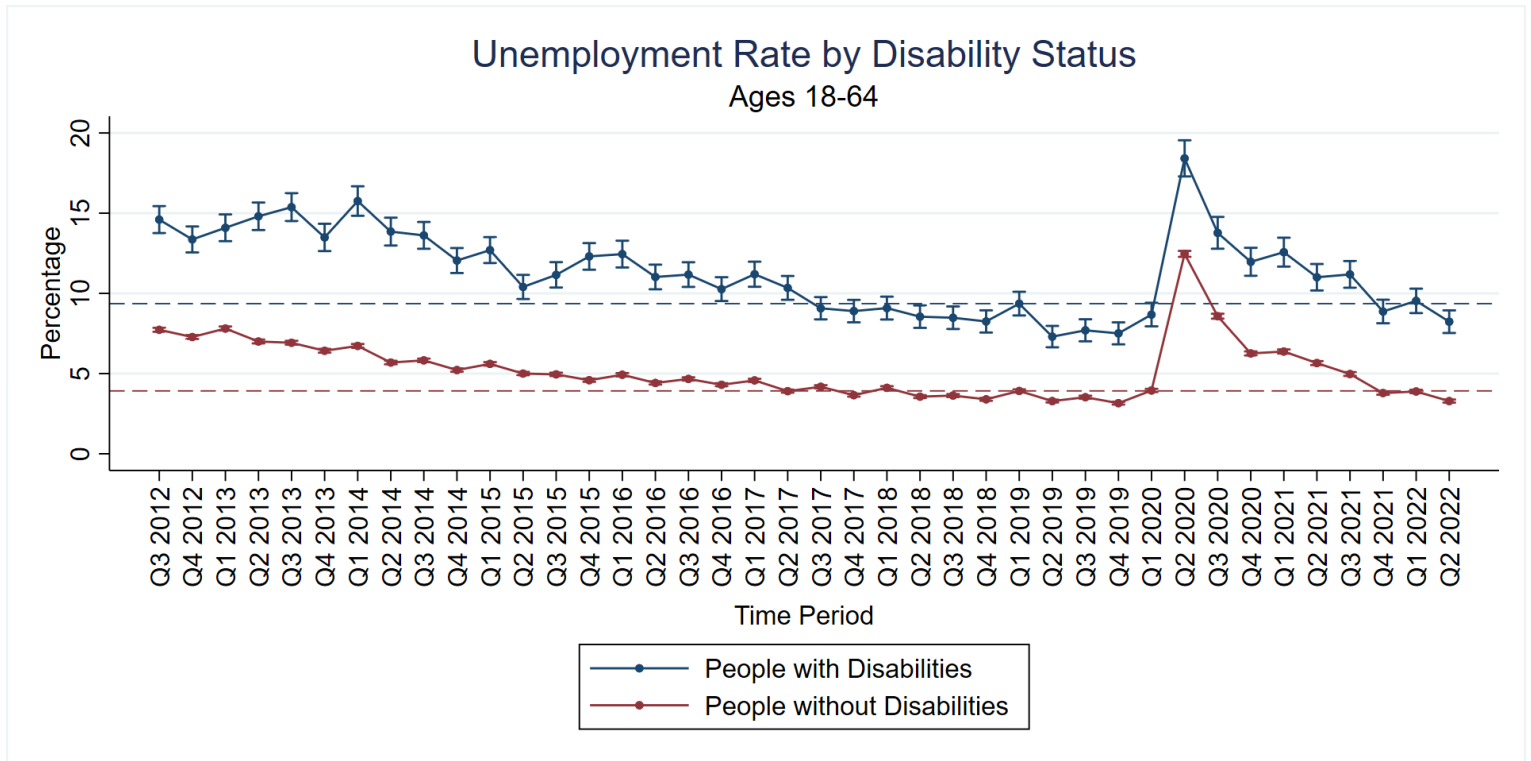


Figure F2

