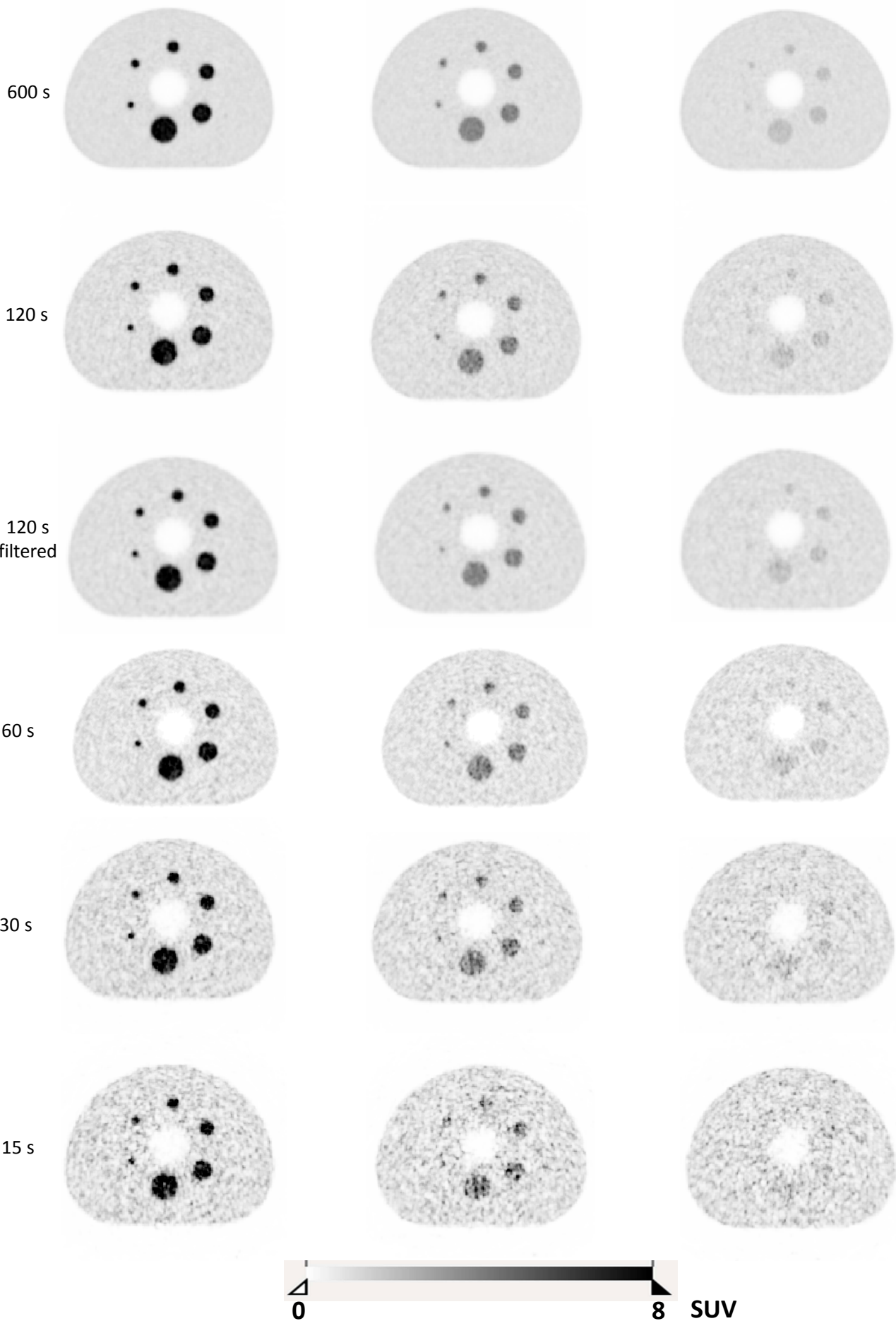


# Center Position (Pos-0)

8 - 1

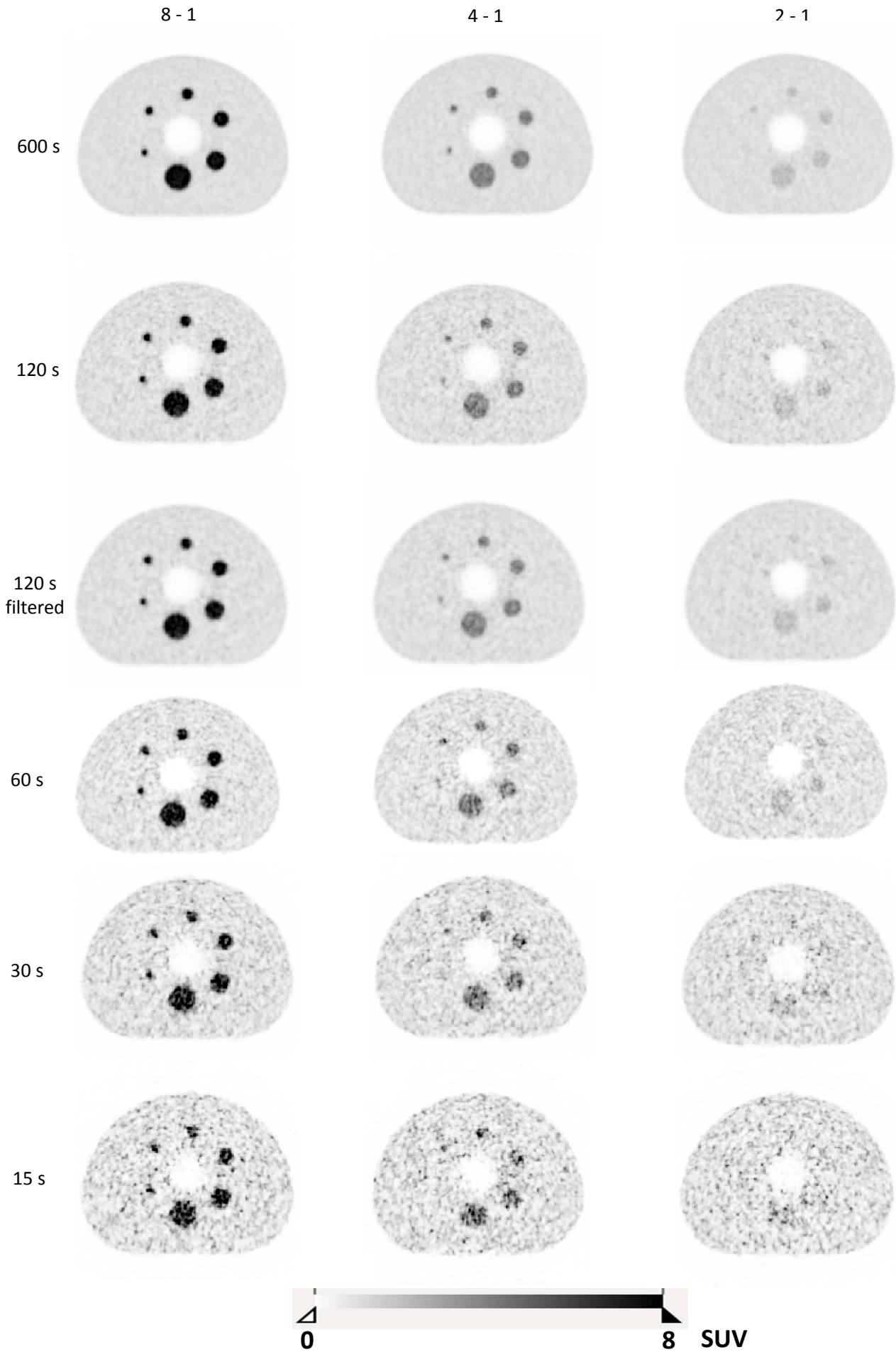
4 - 1

2 - 1



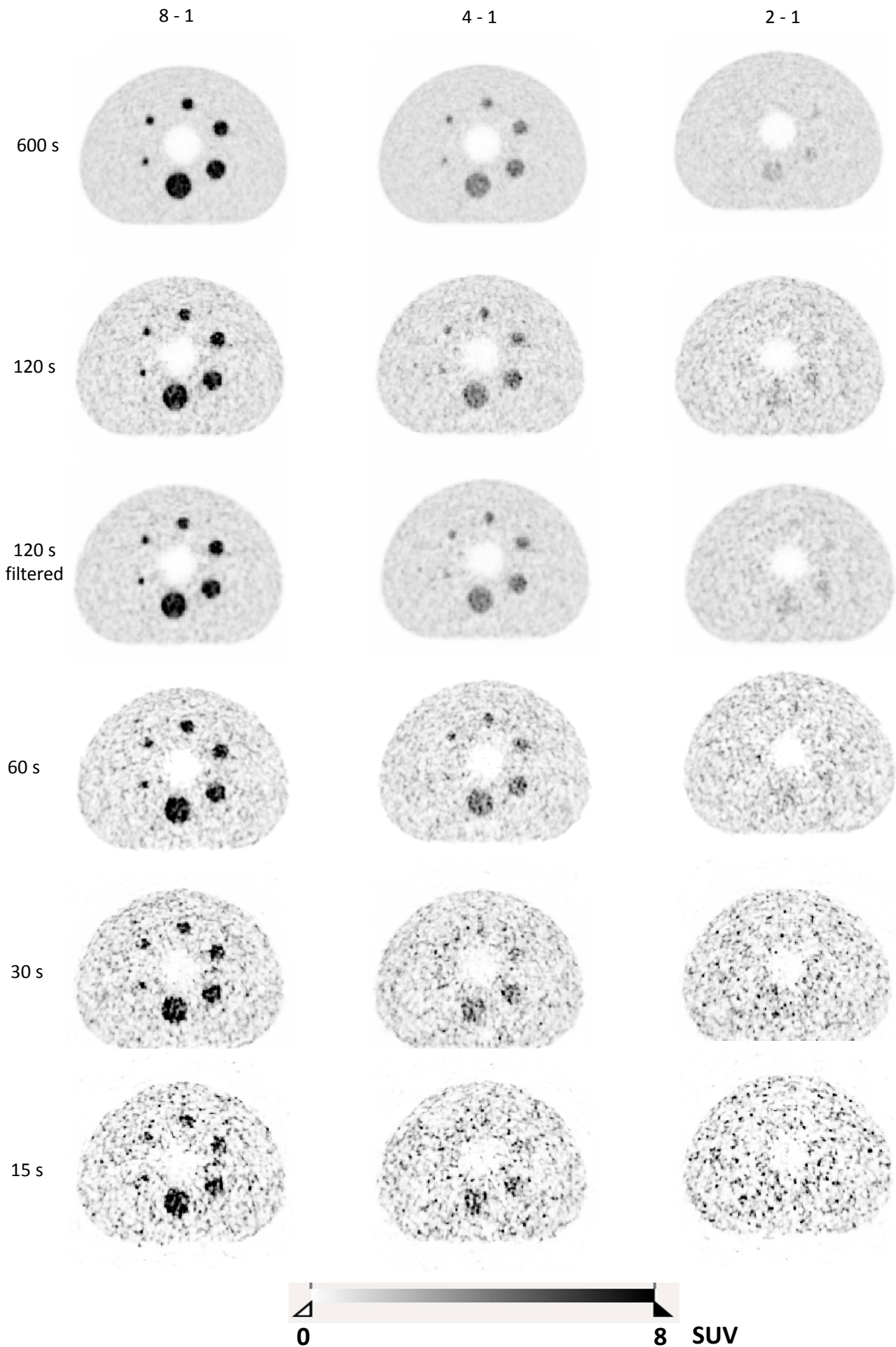
Supplement figure 1: Central slice of the NEMA IQ phantom for the Pos-0 (center of the spheres placed at the center of the axial FOV). Data are presented for the different SBRs (8 to 1, 4 to 1 and 2 to 1) and for the different acquisition times of 600 s, 120 s, 60 s, 30 s and 15 s. In addition the center slice of the 120 s acquisition is given after applying a 3 mm FWHM Gaussian filtering.

Pos-450



Supplement figure 2: Central slice of the NEMA IQ phantom for the Pos-450 (center of the spheres placed at 450 mm offset of the center of the axial FOV). Data are presented for the different SBRs (8 to 1, 4 to 1 and 2 to 1) and for the different acquisition times of 600 s, 120 s, 60 s, 30 s and 15 s. In addition the center slice of the 120 s acquisition is given after applying a 3 mm FWHM Gaussian filtering.

Pos-505



Supplement figure 3: Central slice of the NEMA IQ phantom for the Pos-505 (center of the spheres placed at 505 mm offset of the center of the axial FOV). Data are presented for the different SBRs (8 to 1, 4 to 1 and 2 to 1) and for the different acquisition times of 600 s, 120 s, 60 s, 30 s and 15 s. In addition the center slice of the 120 s acquisition is given after applying a 3 mm FWHM Gaussian filtering.