

Supplementary Information

Somatostatin Receptor Saturation after Administration of High Peptide Amounts of [¹⁷⁷Lu]Lu-HA-DOTATATE – when enough is enough

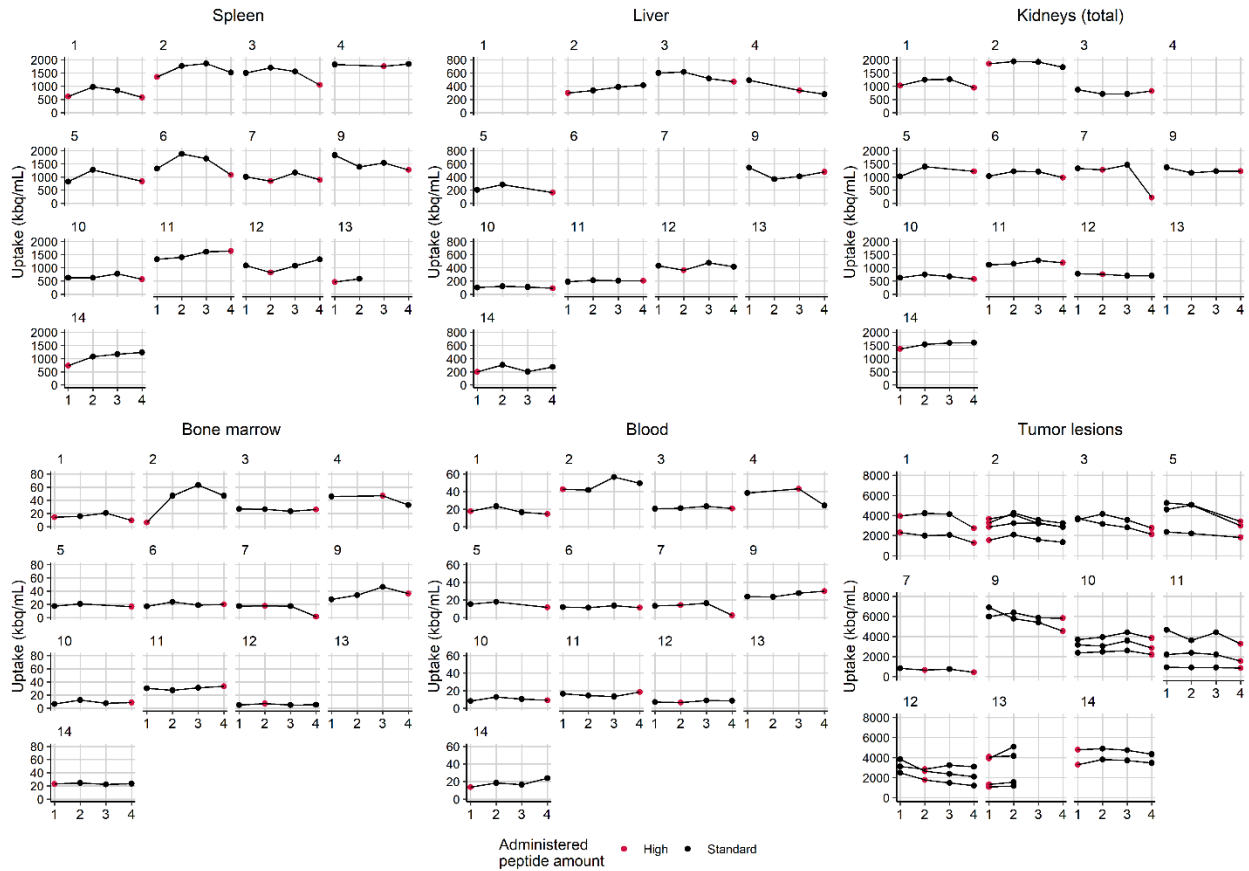
H. Siebinga^{1,2}, C.H.A.M. Veerman², B.J. de Wit – van der Veen², M.P.M. Stokkel², J.J.M.A. Hendriks^{1,2},
E.A. Aalbersberg²

1 Department of Pharmacy & Pharmacology, The Netherlands Cancer Institute, Amsterdam, The Netherlands.

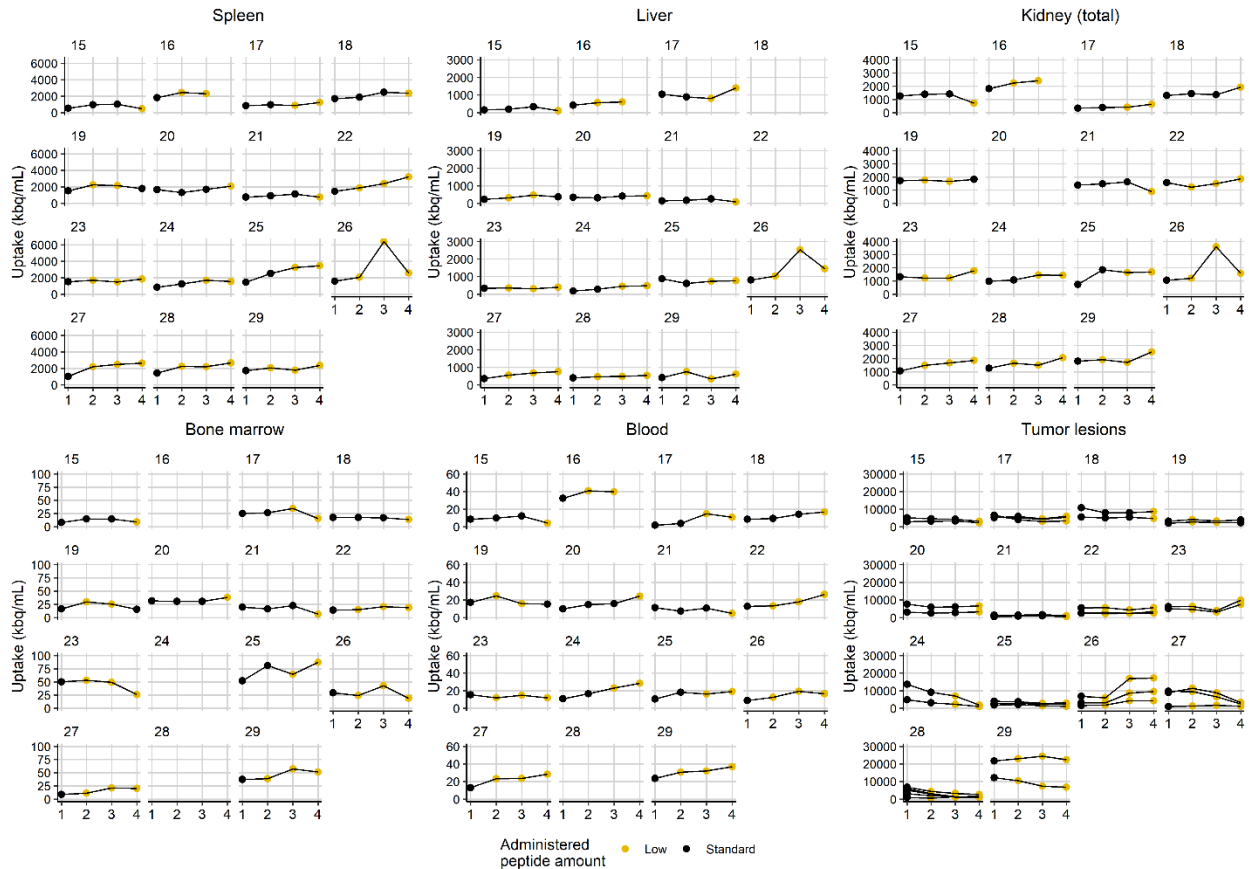
2 Department of Nuclear Medicine, The Netherlands Cancer Institute, Amsterdam, The Netherlands.

Corresponding author: e.aalbersberg@nki.nl, Plesmanlaan 121, 1066 CX Amsterdam, The Netherlands

Supplemental Figure 1 – Trends in [¹⁷⁷Lu]Lu-HA-DOTATATE organ and tumor uptake over cycles per patient, where red dots represent cycles with a high administered peptide amount.



Supplemental Figure 2 Trends in [^{177}Lu]Lu-HA-DOTATATE organ and tumor uptake over cycles per patient, where yellow dots represent cycles with a low administered peptide amount.



Missing data due to diffuse liver metastases (n=2), diffuse bone metastases or spill-out by nearby tumor into the bone marrow (n=3), spill-out into the aorta by nearby tumor lesion (n=1), or no average being available due to a solitary kidney (n=1).