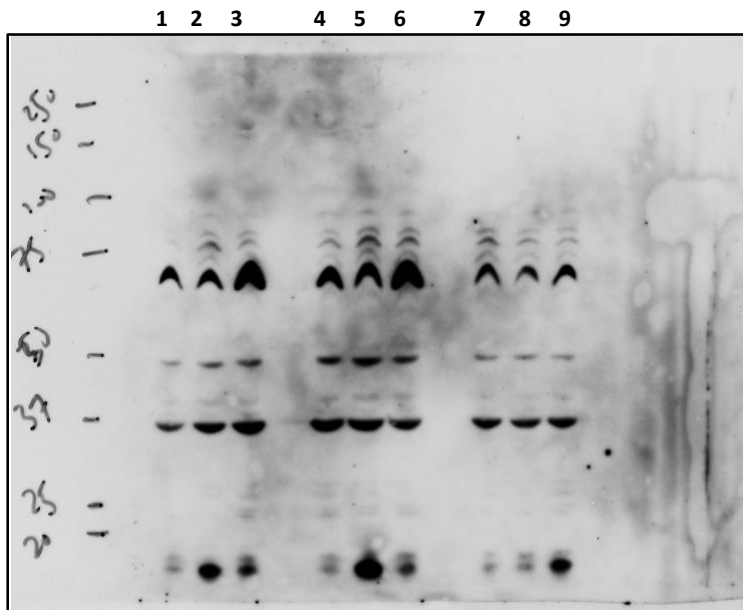
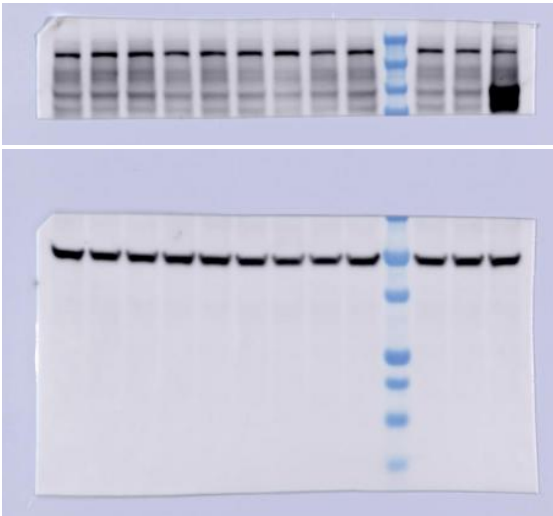


Unprocessed blot depicted in Extended Data Figure 1a. Full scan of the anti-FimA immunoblot depicted in Extended Data Figure 1a. Lanes 5-8 are shown in the cropped image in the figure and correspond to $\Delta fimA-H$, UT189, $\Delta cydAB$, and $\Delta appBC\Delta cyoAB$, respectively. Additional blots were performed to obtain sufficient sample size for statistical analyses.



Unprocessed blot depicted in Extended Data Figure 1b. Full scan of the anti-FimA immunoblot depicted in Extended Data Figure 1b. Lanes 7-9 are shown in the cropped image in the figure and correspond to UT189, $\Delta cydAB$, and $\Delta appBC\Delta cyoAB$, respectively.

1 2 3 4 5 6 7 8 9 10 11 12



Unprocessed blot depicted in Figure 5a. Full scan of the anti-HIF1a (top) and anti- β tubulin (bottom) immunoblots depicted in Figure 5a. Lanes 7 and 8 are depicted in the cropped image and correspond to mock infected and UTI89 infected samples. Given the cross-reactivity of the HIF1a antibody, sample 12 was treated with DMOG (a HIF1a stabilizing drug) during the infection process to increase HIF-1a abundance and aid in identification of the HIF-1a specific band.