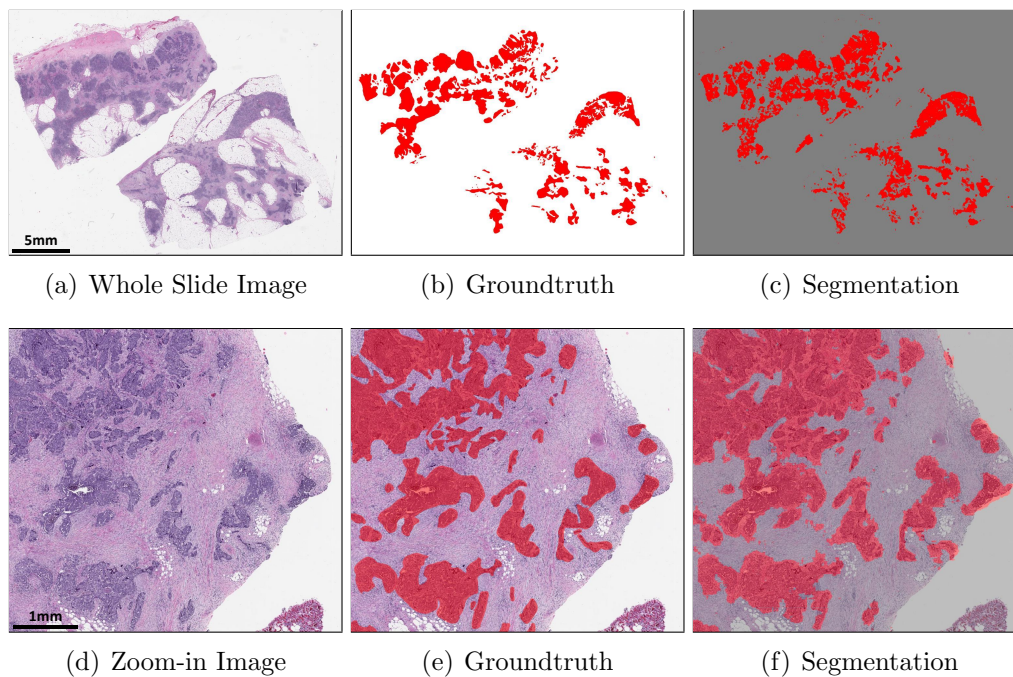


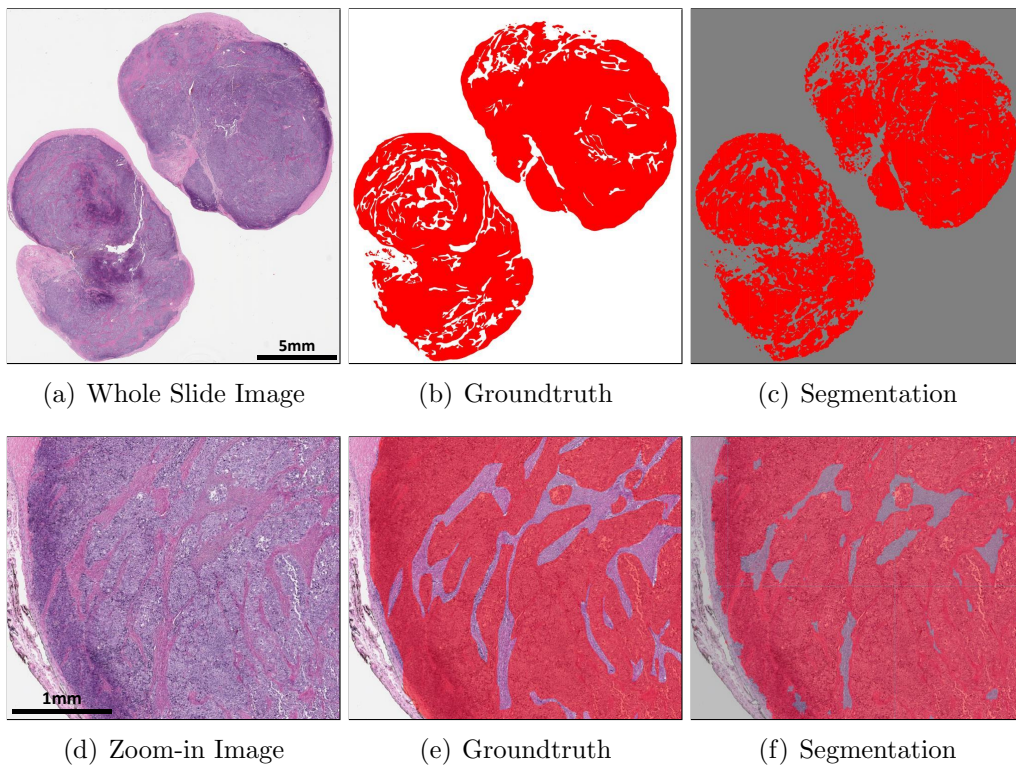
## Supplementary Information

Supplementary Figure 1



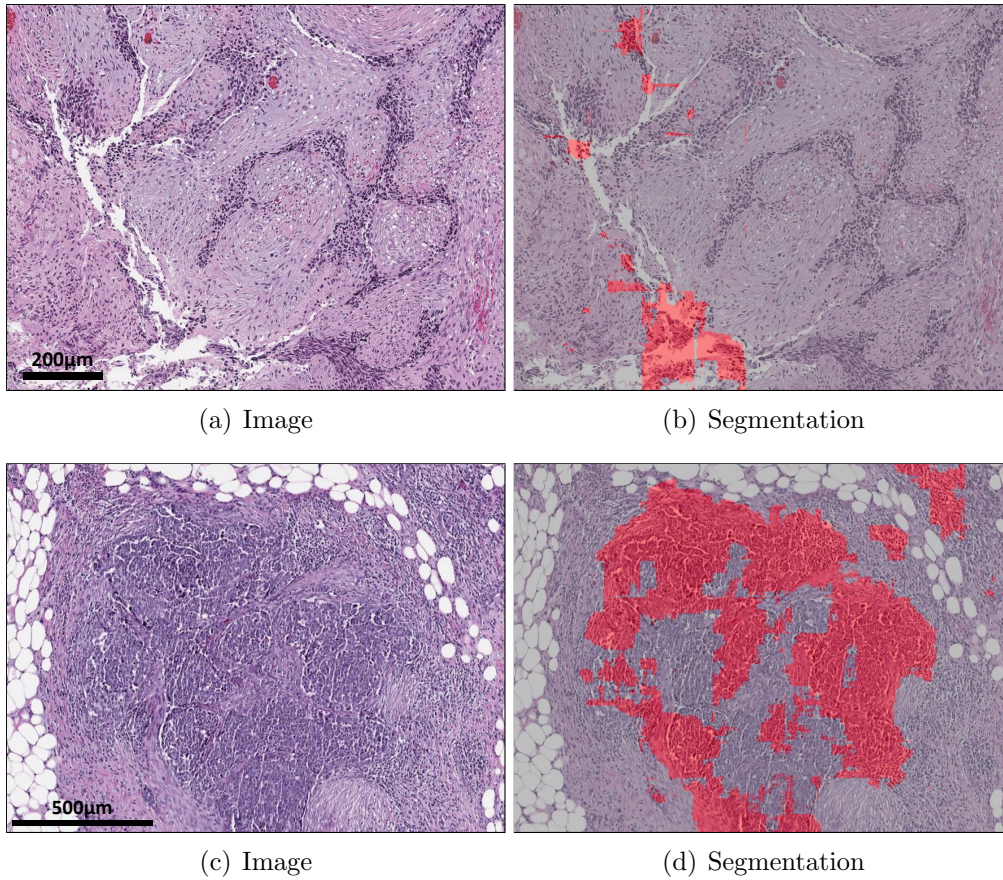
Supplementary Figure 1: Ovarian image, its groundtruth, and its segmentation. (a-c) show the entire whole slide image and (d-f) show a zoom-in image. Cancers are highlighted in red. White regions in (b,e) and gray regions in (c,f) are non-cancer.

Supplementary Figure 2



Supplementary Figure 2: Ovarian image, its groundtruth, and its segmentation. (a-c) show the entire whole slide image and (d-f) show a zoom-in image. Cancers are highlighted in red. White regions in (b,e) and gray regions in (c,f) are non-cancer.

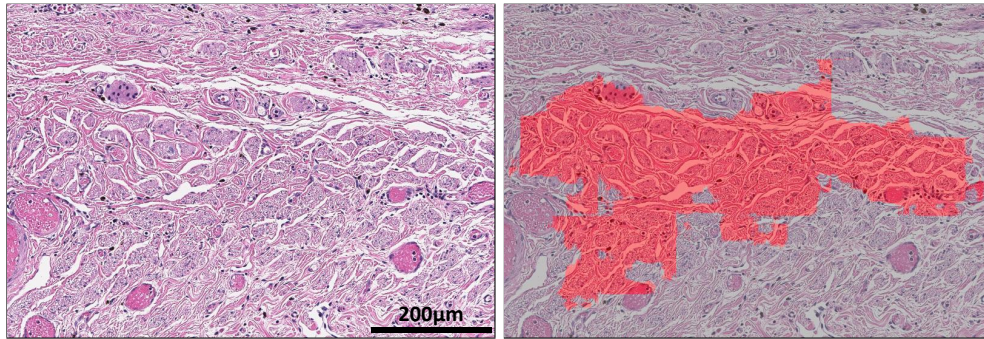
Supplementary Figure 3



Supplementary Figure 3: False negatives of our cancer segmentation model. (a,b) Cautery artifact. (c,d) Poor staining. Red regions indicate cancer predicted by the segmentation model.

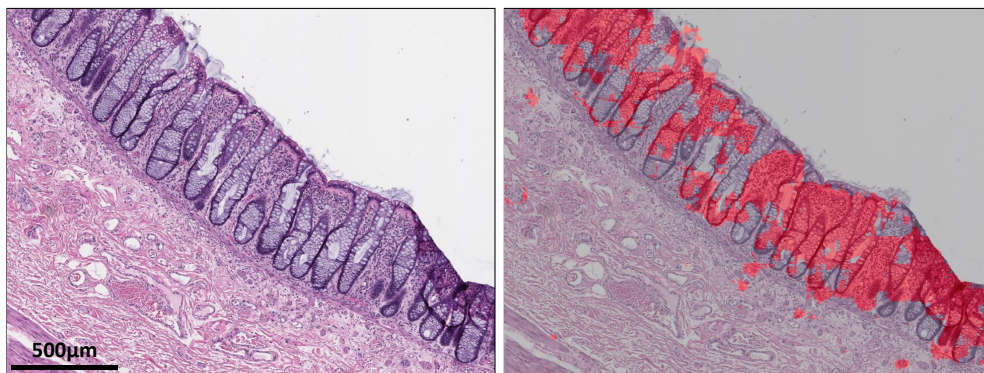


Supplementary Figure 4



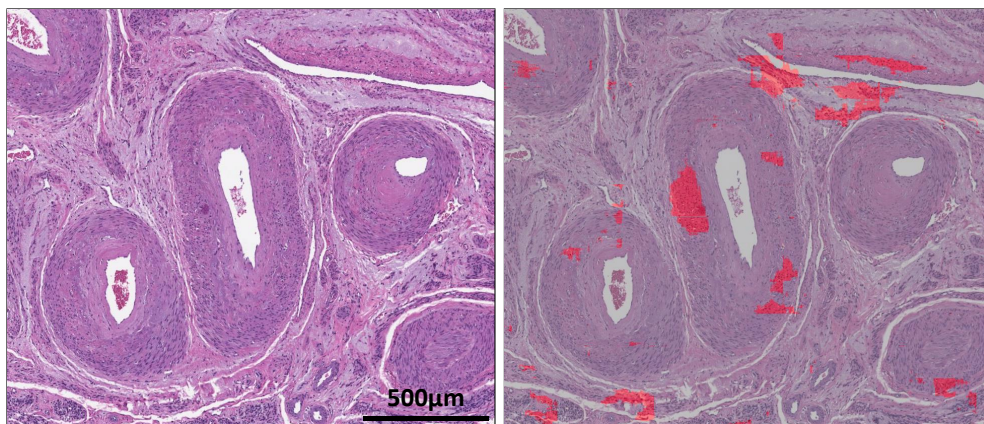
(a) Image

(b) Segmentation



(c) Image

(d) Segmentation



(e) Image

(f) Segmentation

Supplementary Figure 4: False positives of our cancer segmentation model. (a,b) Smooth muscle on fallopian tube. (c,d) Colon epithelium. (e,f) Blood vessels. Red regions indicate cancer predicted by the segmentation model.