

Spatial distribution and physicochemical properties of respirable volcanic ash from the 16-17 August 2006 Tungurahua eruption (Ecuador), and alveolar epithelium response *in-vitro*

Supplemental Material

Julia Eychenne^{1,2*}, Lucia Gurioli¹, David Damby³, Corinne Belville², Federica Schiavi¹, Geoffroy Marceau^{2,4}, Claire Szczepaniak⁵, Christelle Blavignac⁵, Mickael Laumonier¹, Emmanuel Gardés¹, Jean-Luc Le Pennec^{6,7}, Jean-Marie Nedelec⁸, Loïc Blanchon², Vincent Sapin^{2,4}

¹ Université Clermont Auvergne, CNRS, IRD, OPGC, Laboratoire Magmas et Volcans, F-63000 Clermont-Ferrand, France

² Université Clermont Auvergne, CNRS, INSERM, Institut de Génétique Reproduction et Développement, F-63000 Clermont-Ferrand, France

³ U.S. Geological Survey, California Volcano Observatory, Moffett Field, CA, USA

⁴ Biochemistry and Molecular Genetic Department, University Hospital, F-63000 Clermont-Ferrand, France

⁵ Université Clermont Auvergne, UCA PARTNER, Centre Imagerie Cellulaire Santé, F-63000 Clermont-Ferrand, France

⁶ Geo-Ocean, CNRS, Ifremer, UMR6538, F-29280 Plouzané, France

⁷ IRD Office for Indonesia & Timor Leste, Jalan Kemang Raya n°4, Jakarta 12730, Indonesia

⁸ Université Clermont Auvergne, Clermont Auvergne INP, CNRS, ICCFn, F-63000 Clermont-Ferrand, France

Content of this file:

Supplemental Figures S1 to S2 with captions

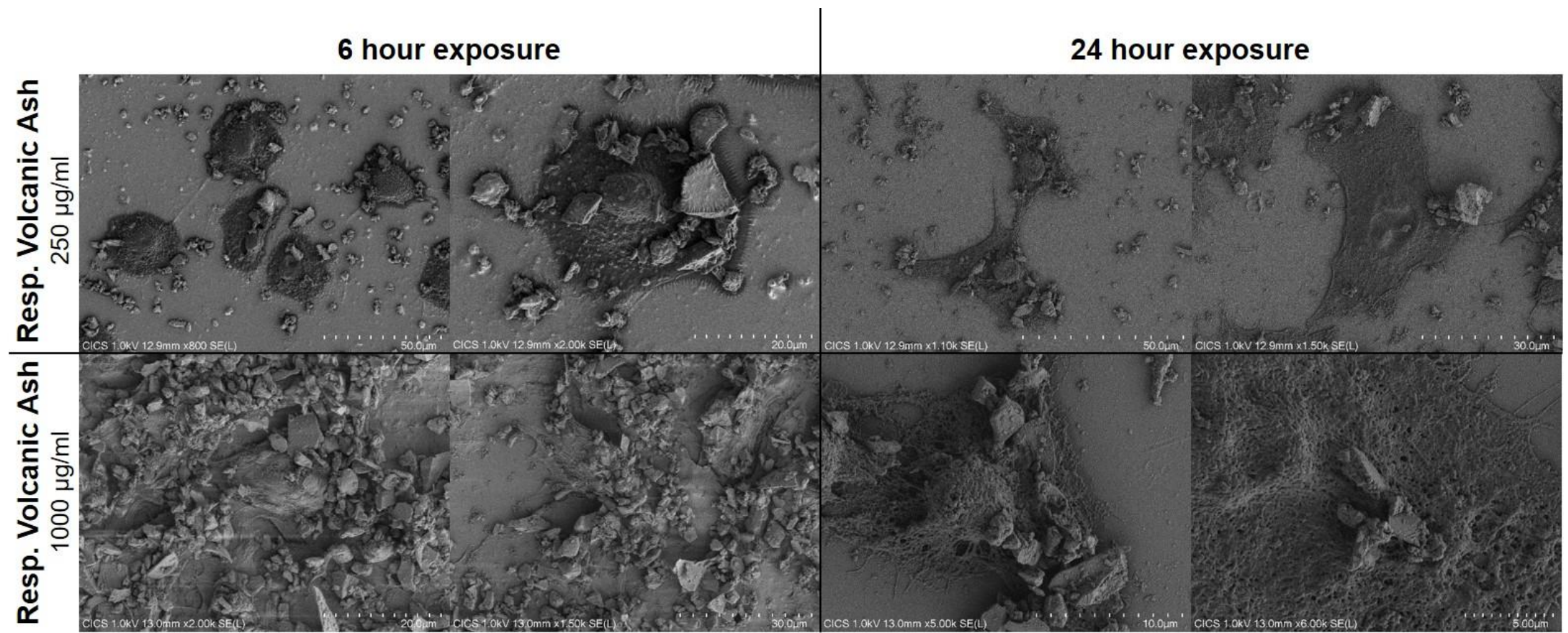


Fig. S1: Interactions between A549 cells and respirable Tungurahua volcanic ash at doses of 250 µg/ml and 1000 µg/ml after 6 and 24h of exposure, imaged by FEG-SEM.

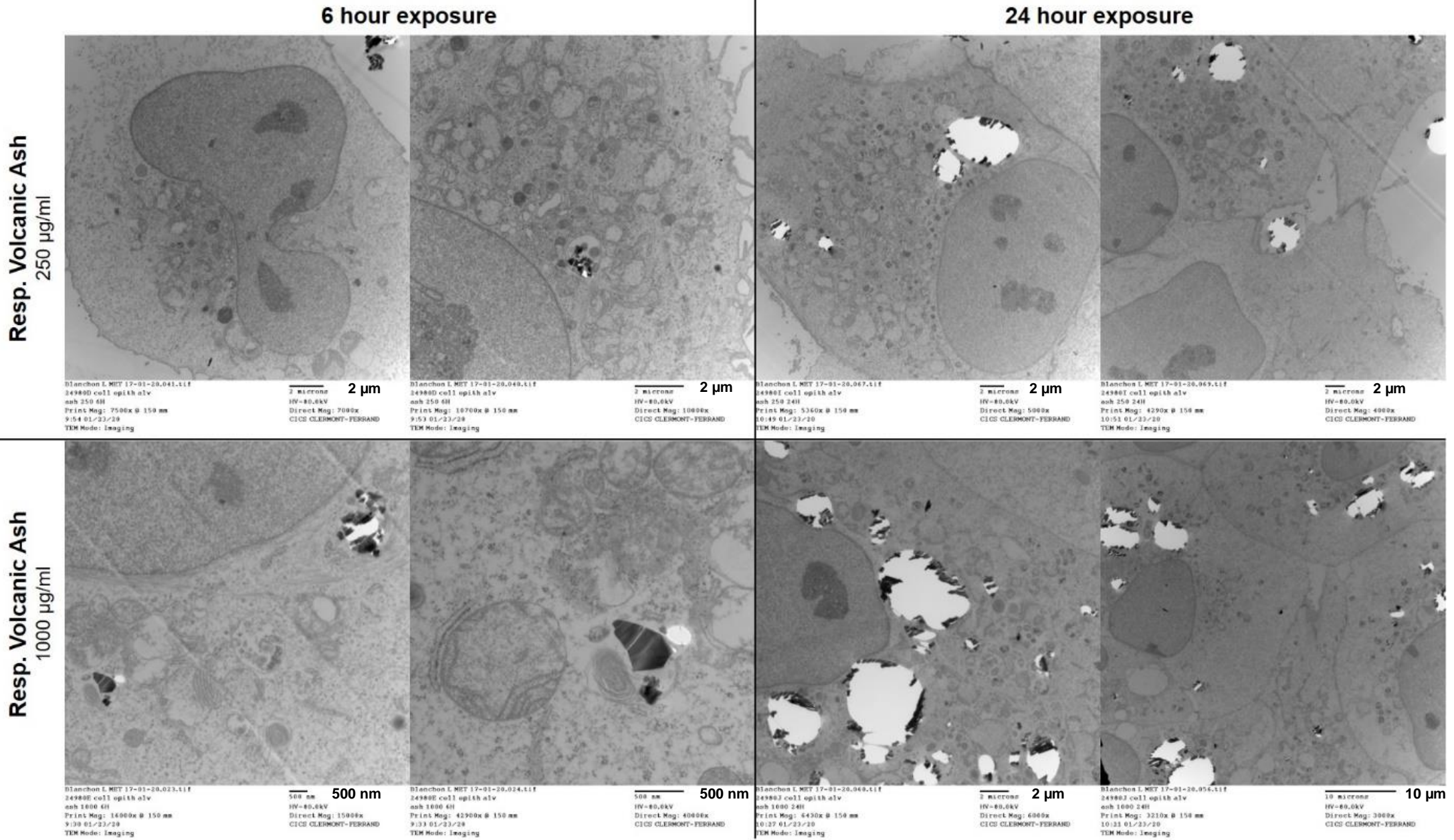


Fig. S2: Interactions between A549 cells and respirable Tungurahua volcanic ash at doses of 250 µg/ml and 1000 µg/ml after 6 and 24h of exposure, imaged by TEM.