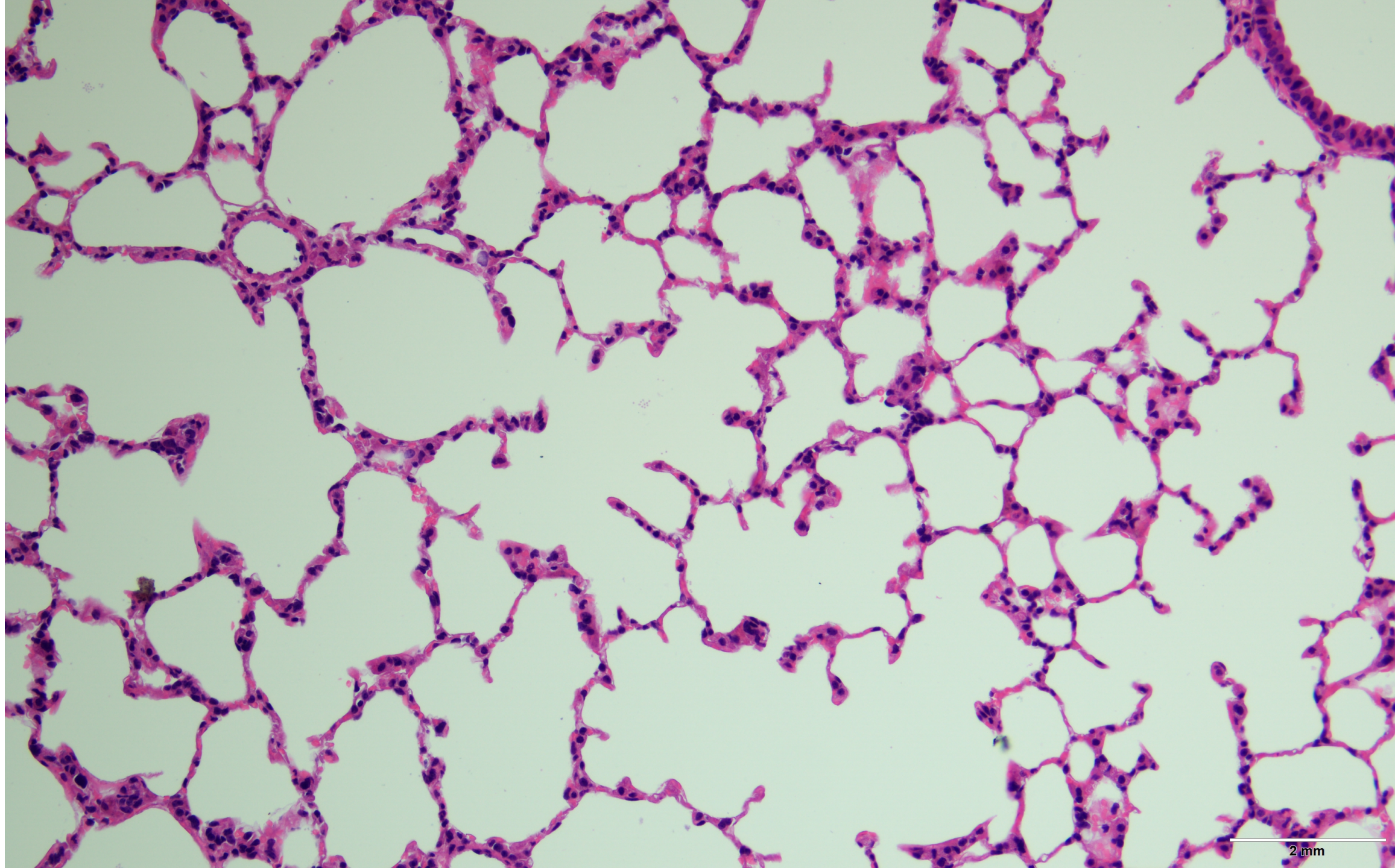
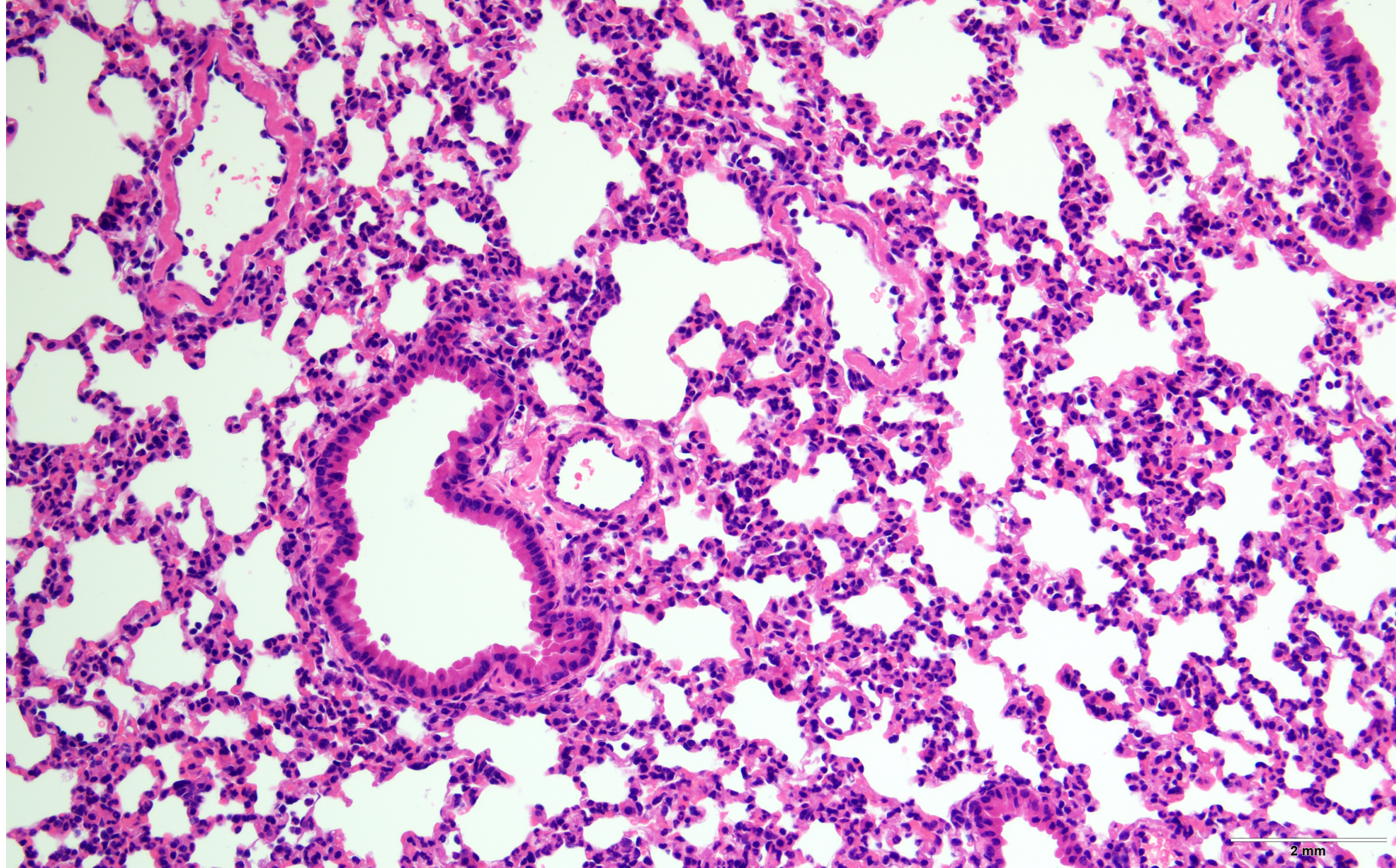


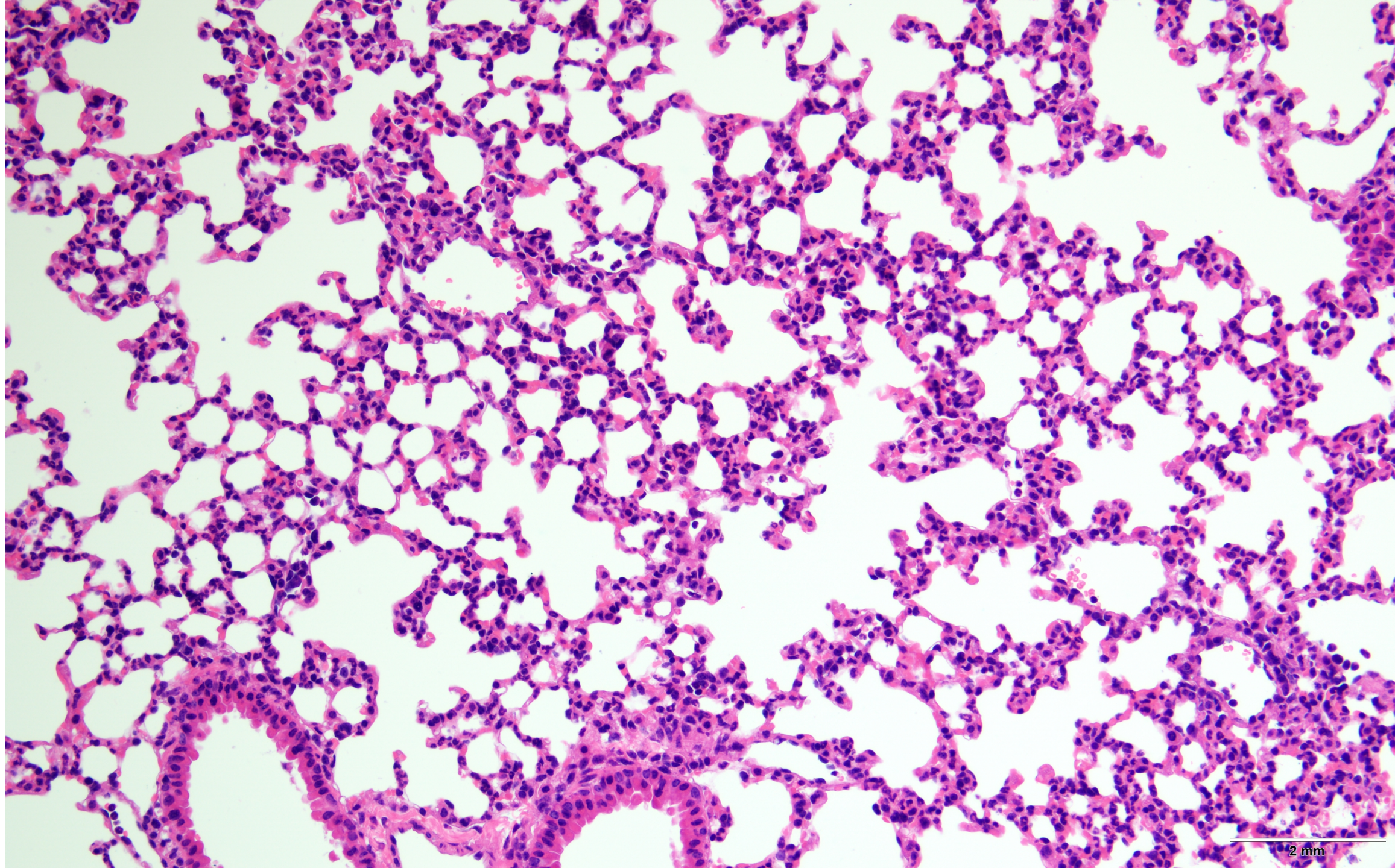
2 mm



2 mm



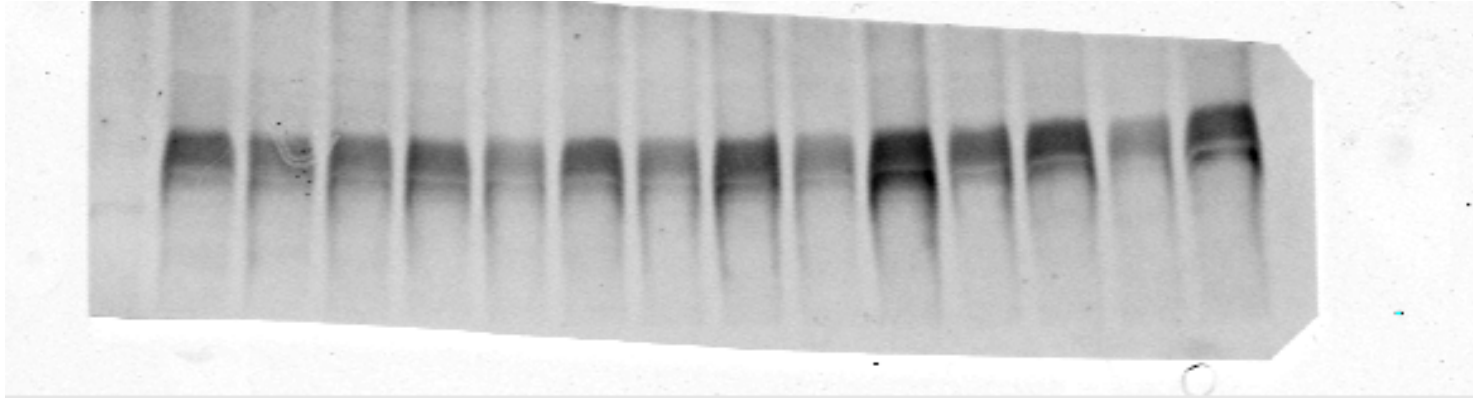
2 mm



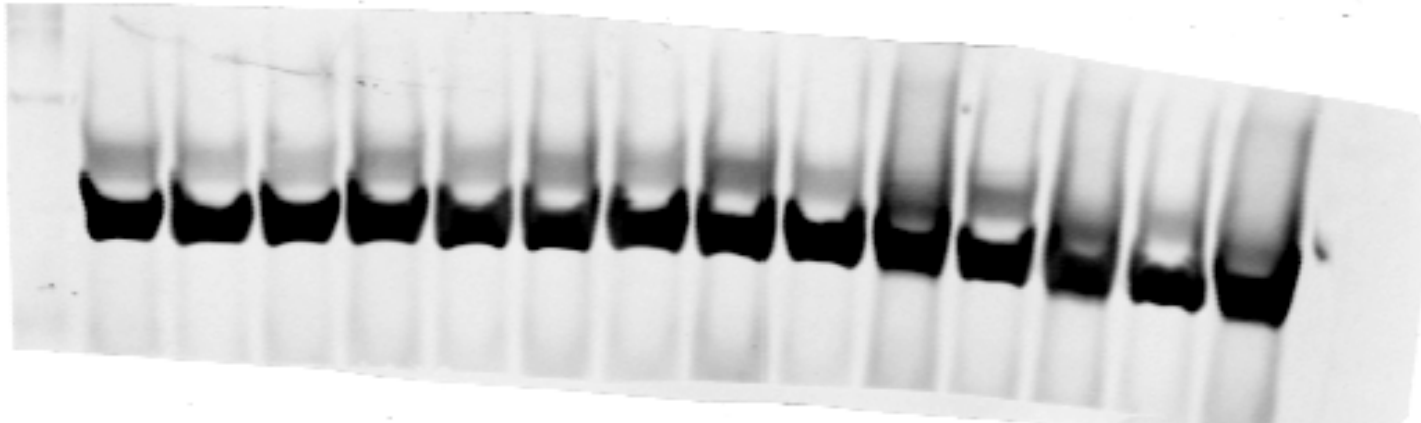
2 mm

**WB Sample image used in in Figure 1**

**TH  
(60KDa)**

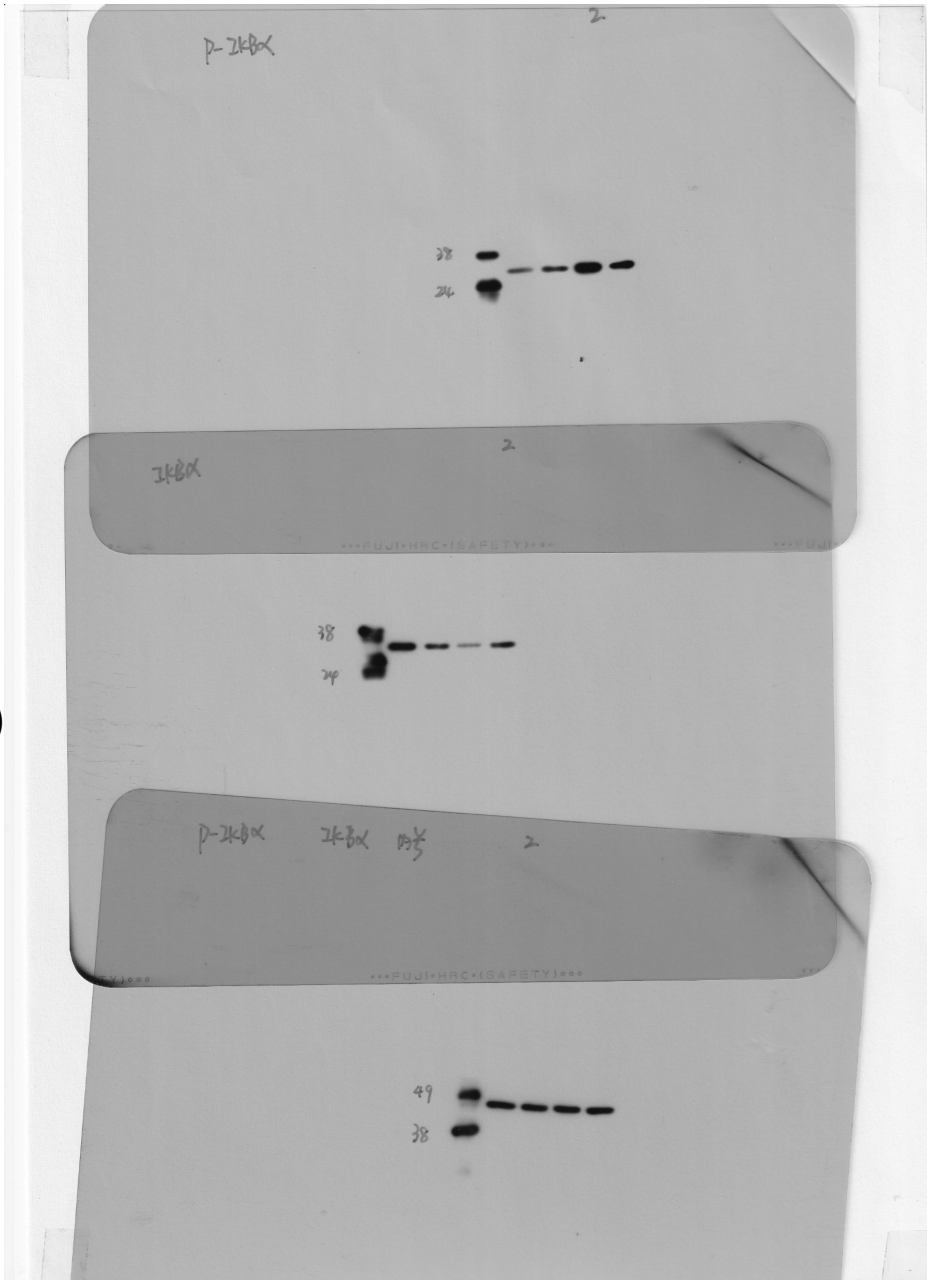


**$\beta$ -Actin  
(42KDa)**



# WB Sample image used in in Figure 3

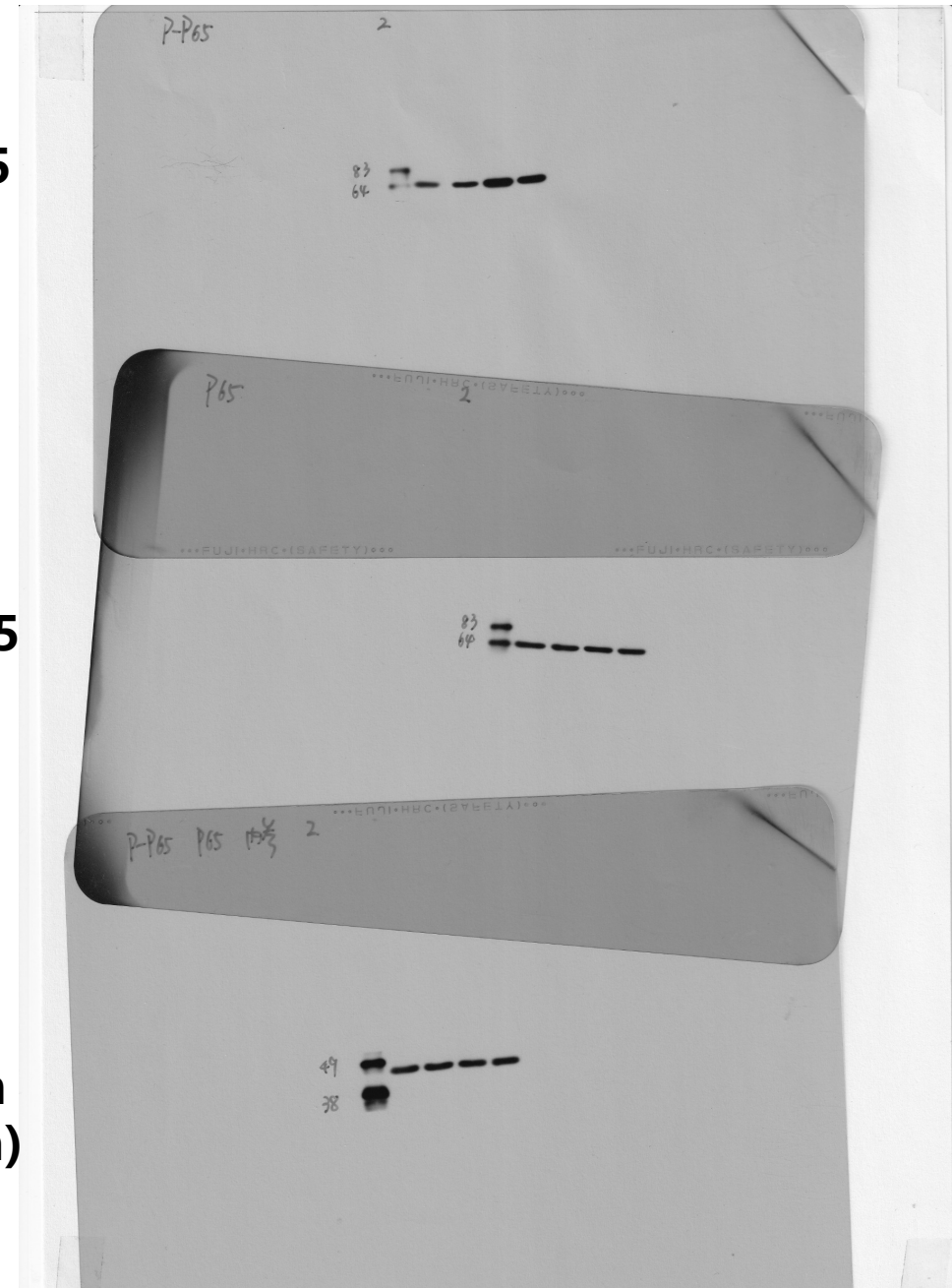
**p-I $\kappa$ B $\alpha$**   
**(35 KDa)**



**I $\kappa$ B $\alpha$**   
**(35 KDa)**

**$\beta$ -Actin**  
**(42KDa)**

**p-NF $\kappa$ B p65**  
**(65 KDa)**

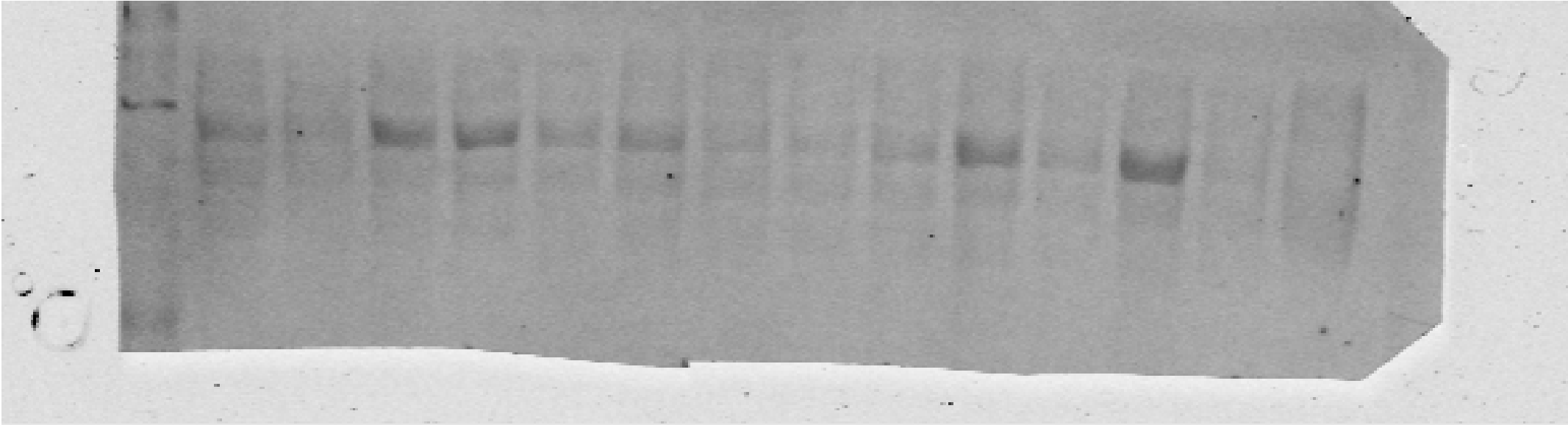


**NF $\kappa$ B P65**  
**(65 KDa)**

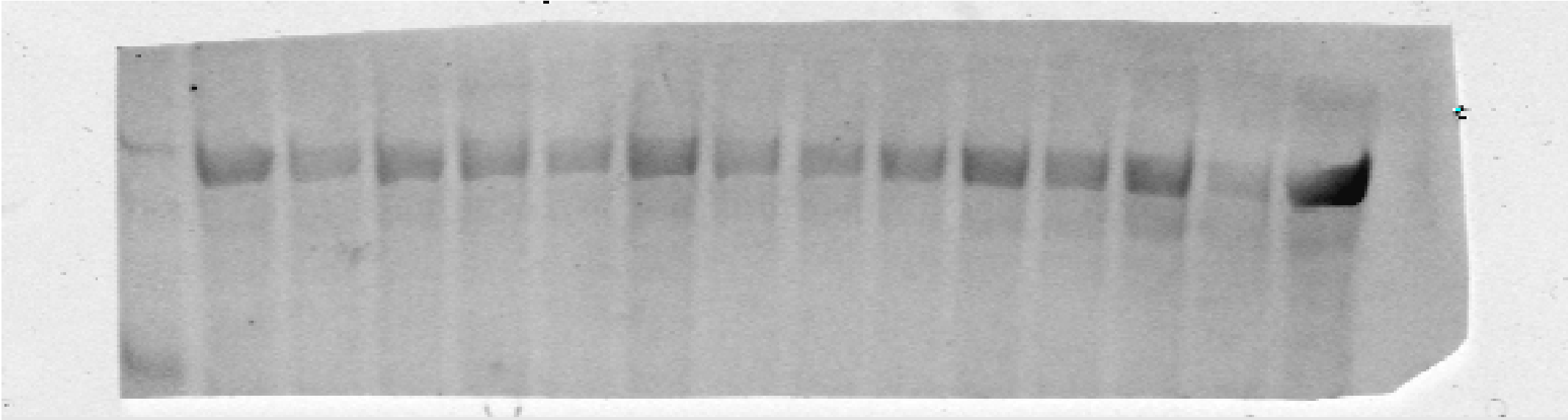
**$\beta$ -Actin**  
**(42KDa)**

**WB replicates image (p-NFκB p65, NFκB p65)**

**p-NFκB p65  
(65 KDa)**



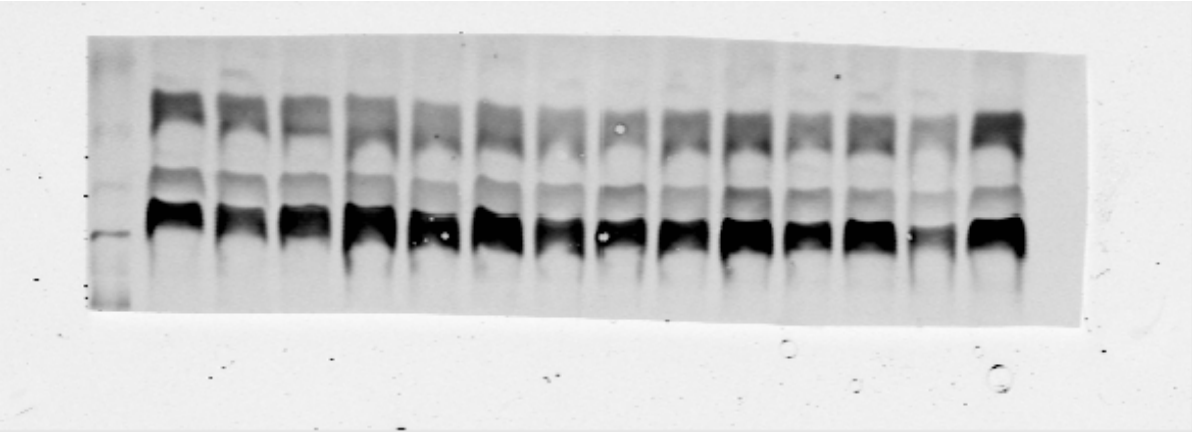
**NFκB P65  
(65 KDa)**



**WB replicates image (p-IκBα ,IκBα p-NFκB p65, NFκB p65, β-Actin)**

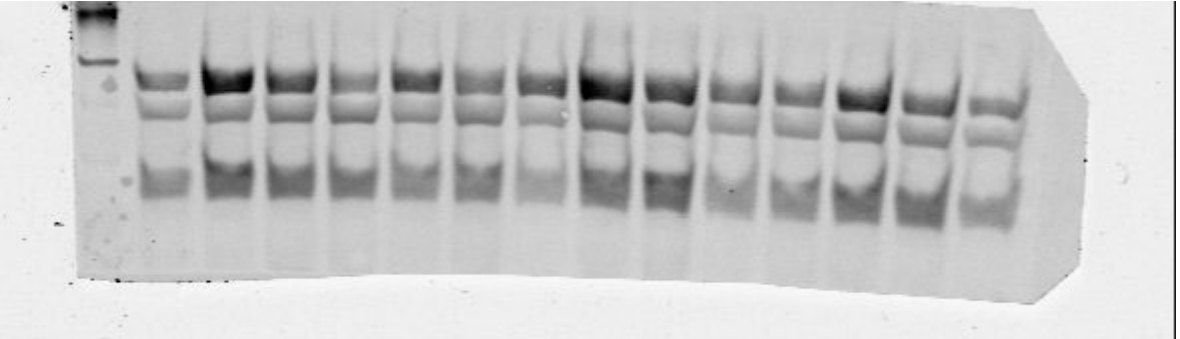
**IκBα  
(35 KDa)**

**NFκB P65  
(65 KDa)**

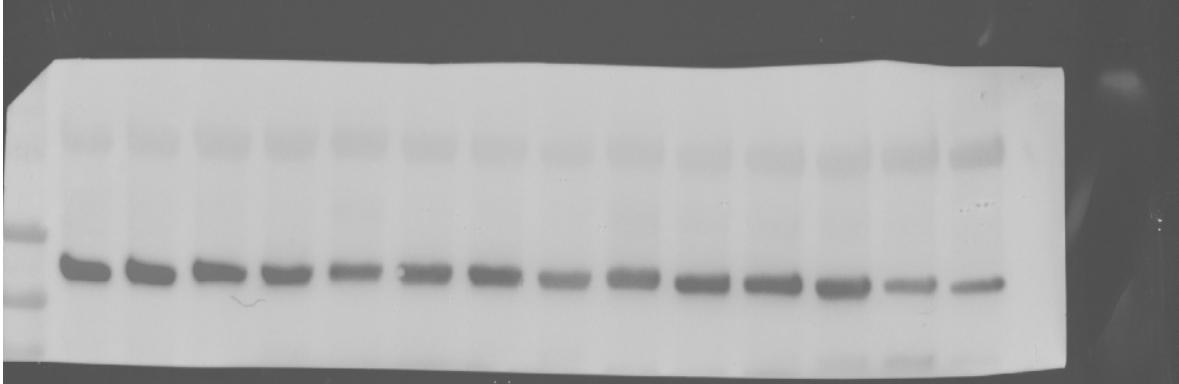


**p-NFκB p65  
(65 KDa)**

**p-IκBα  
(35 KDa)**



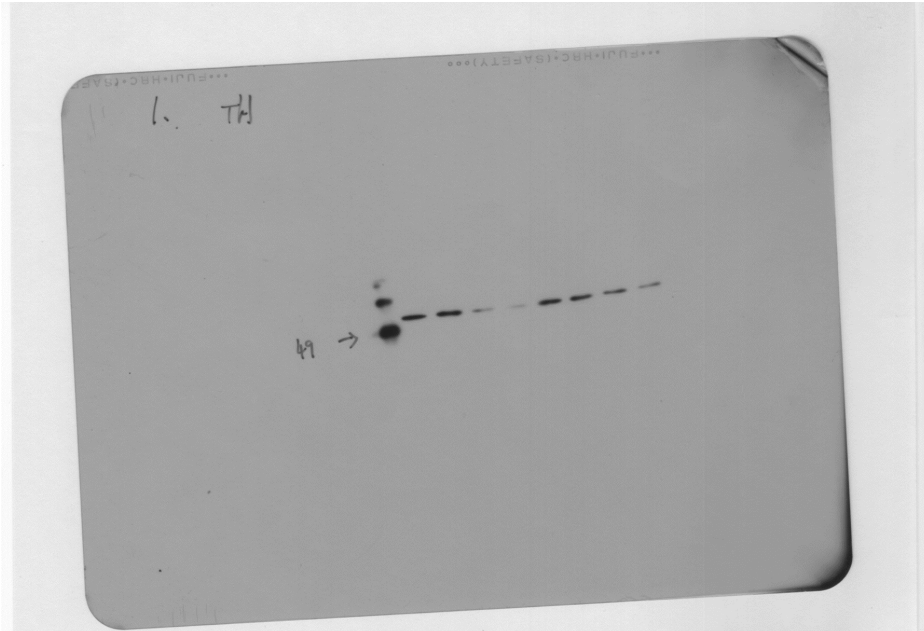
**β-Actin  
(42 KDa)**



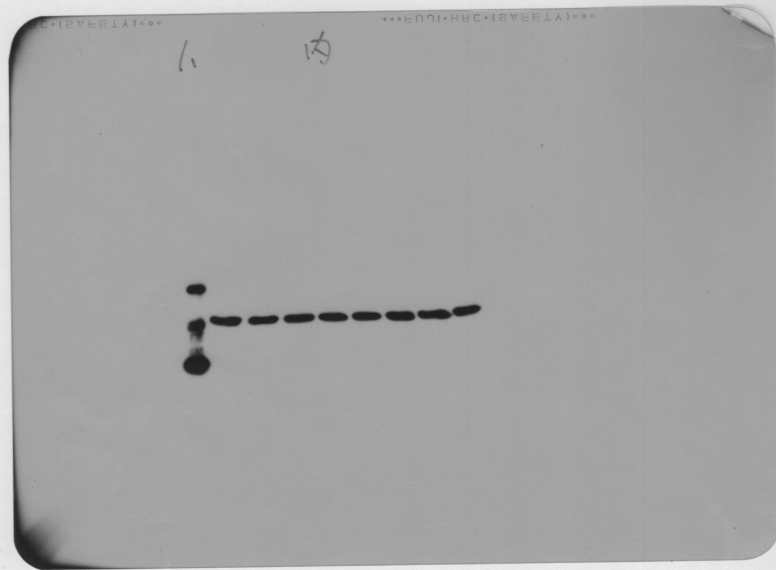


# WB replicates original image (TH and $\beta$ -Actin)

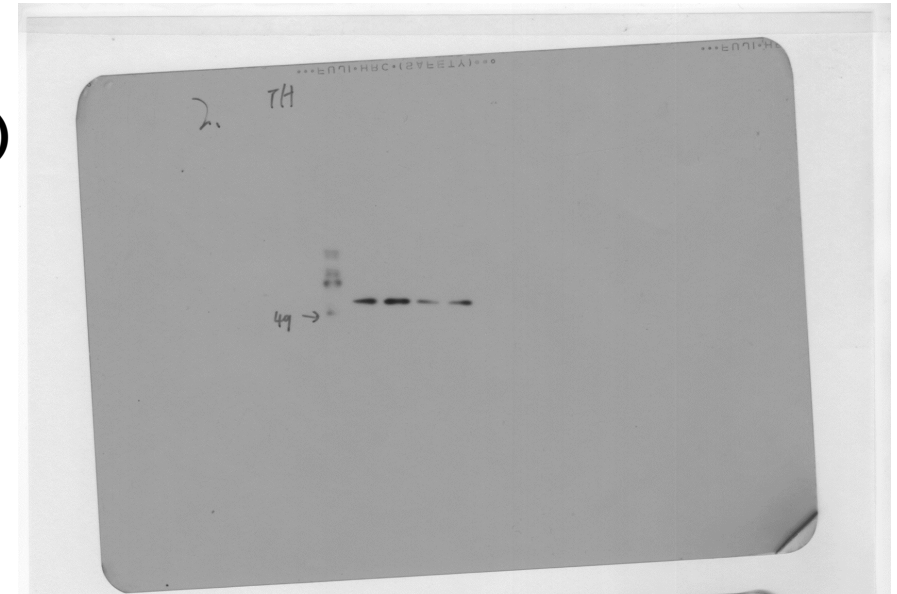
**TH(60KDa)**



**$\beta$ -Actin  
(42KDa)**



**TH(60KDa)**

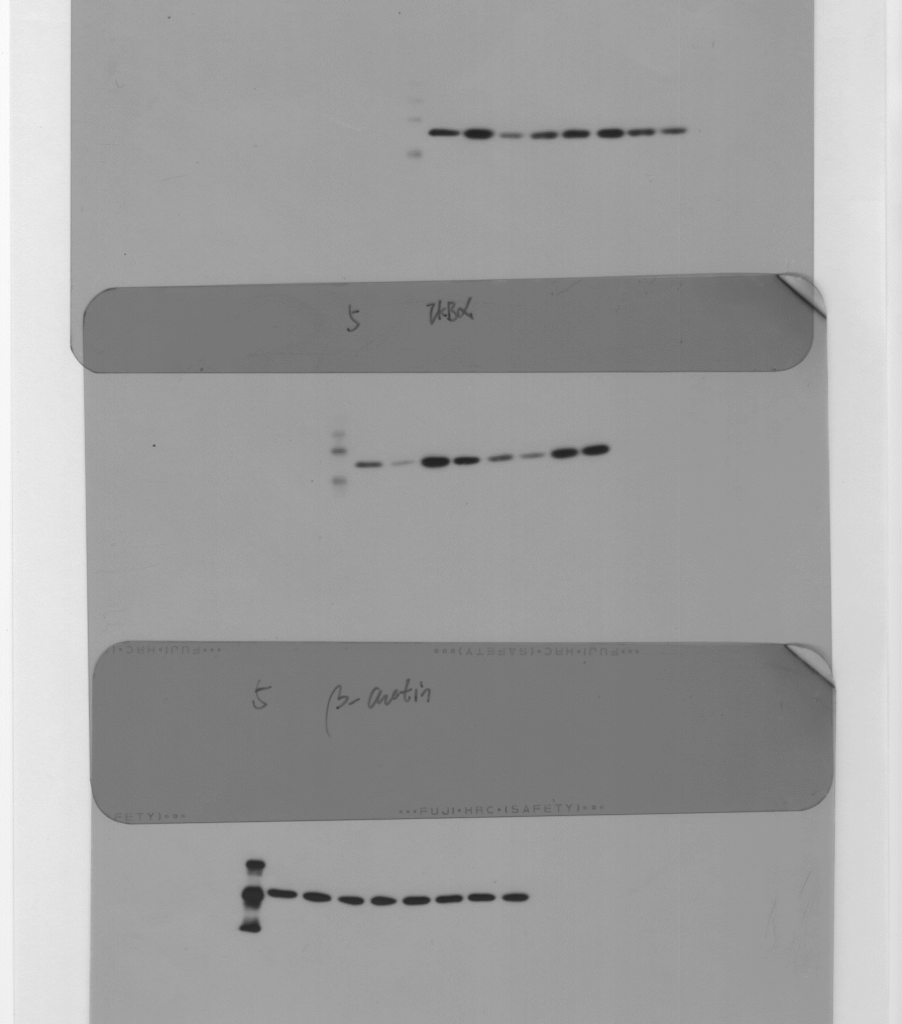


**$\beta$ -Actin  
(42KDa)**

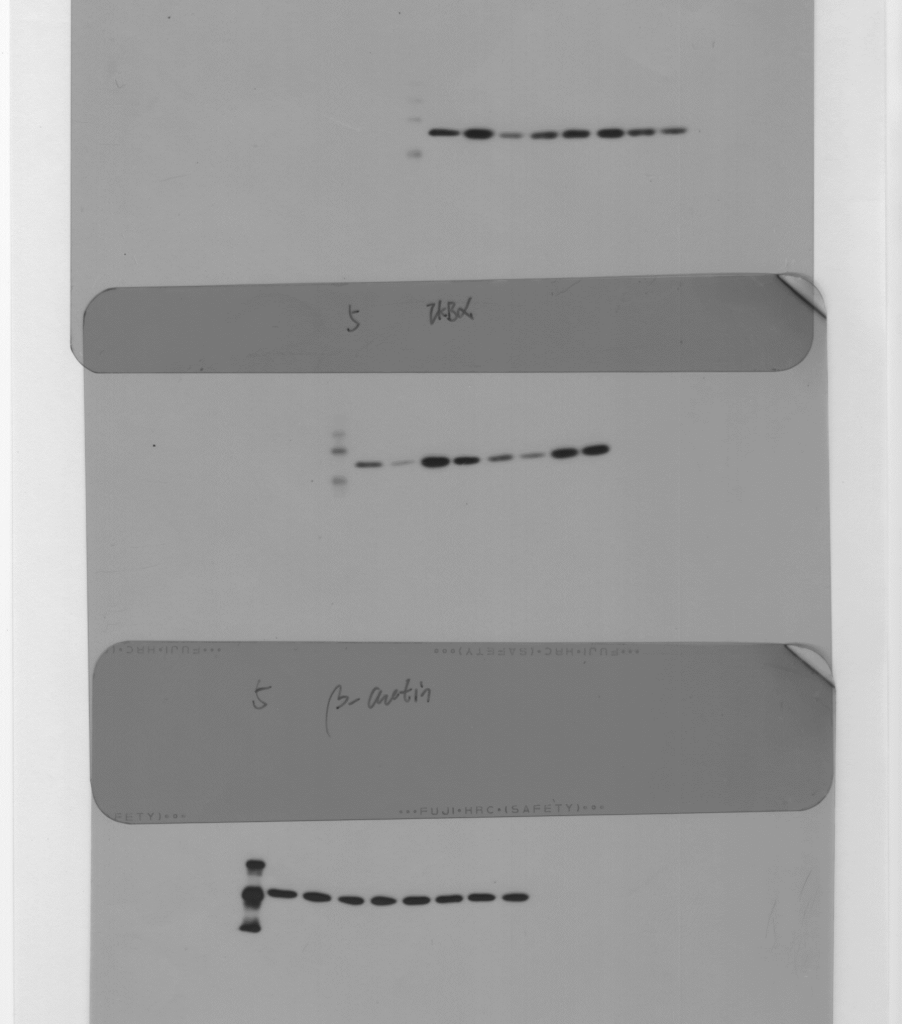


WB replicates original image (p-I $\kappa$ B $\alpha$  ,I $\kappa$ B $\alpha$  and  $\beta$ -Actin)

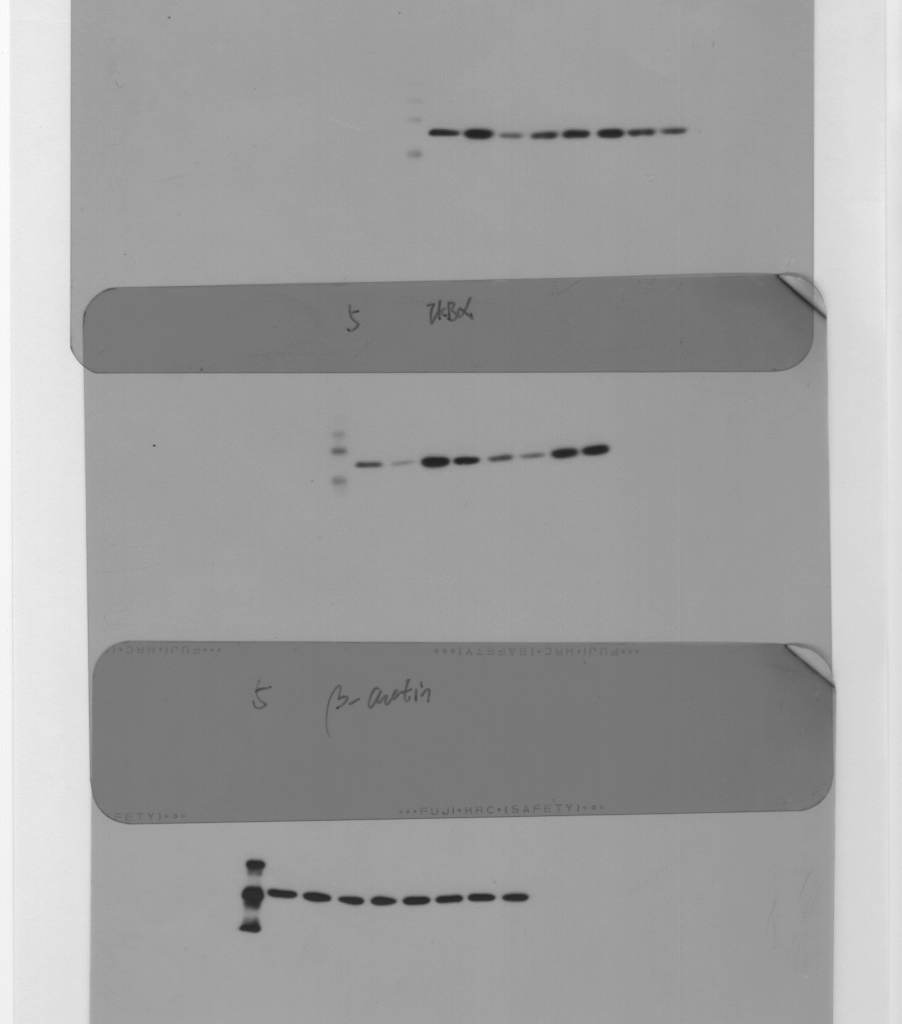
I $\kappa$ B $\alpha$   
(35 KDa)



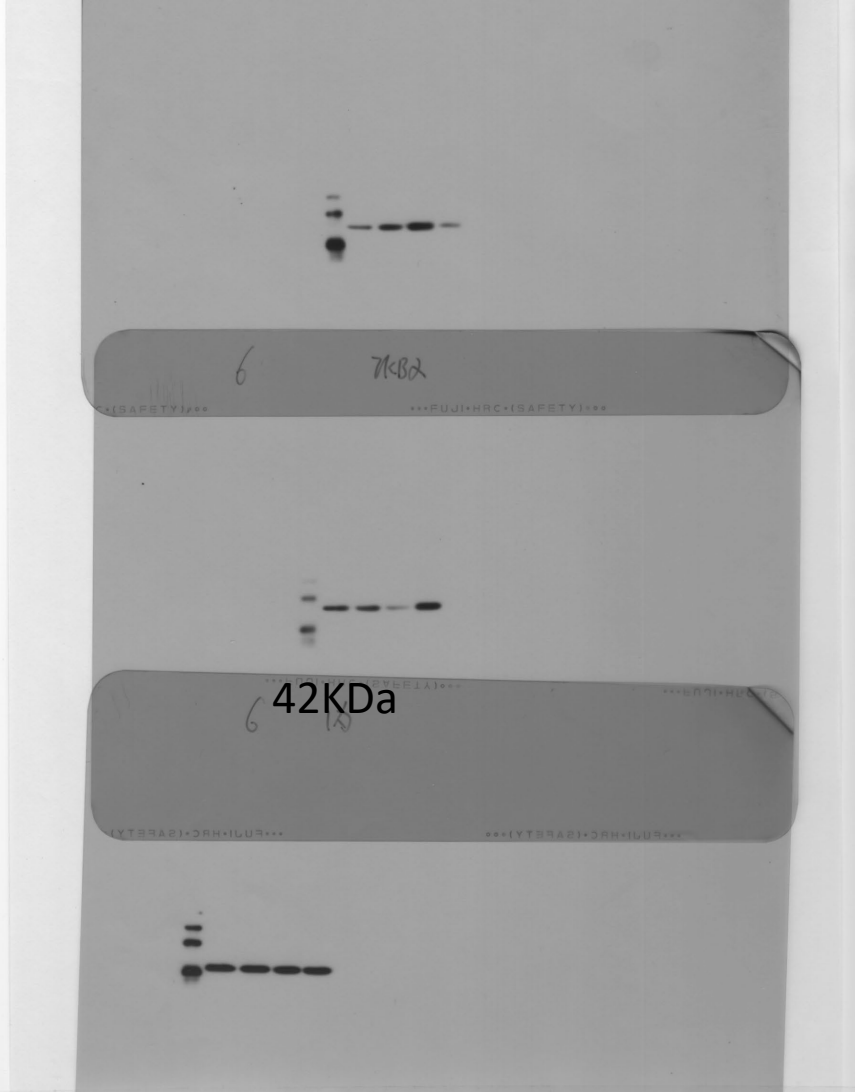
p-I $\kappa$ B $\alpha$   
(35 KDa)



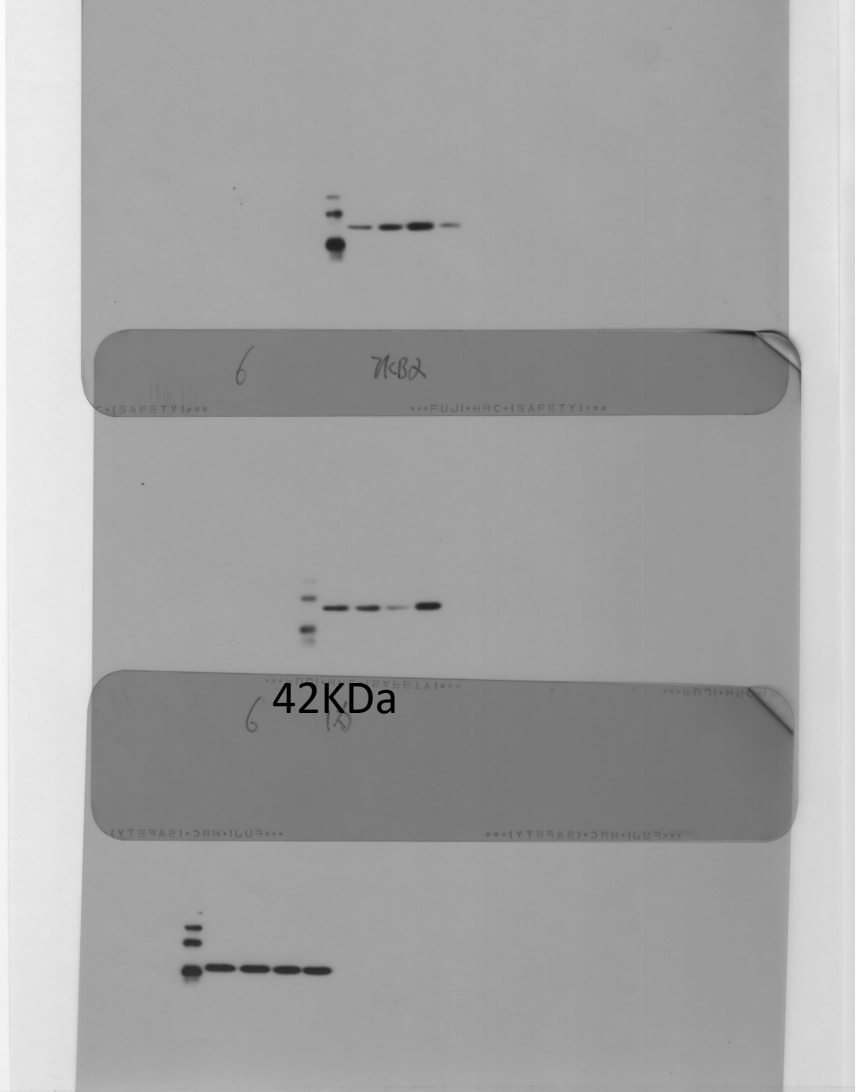
$\beta$ -Actin  
(42 KDa)



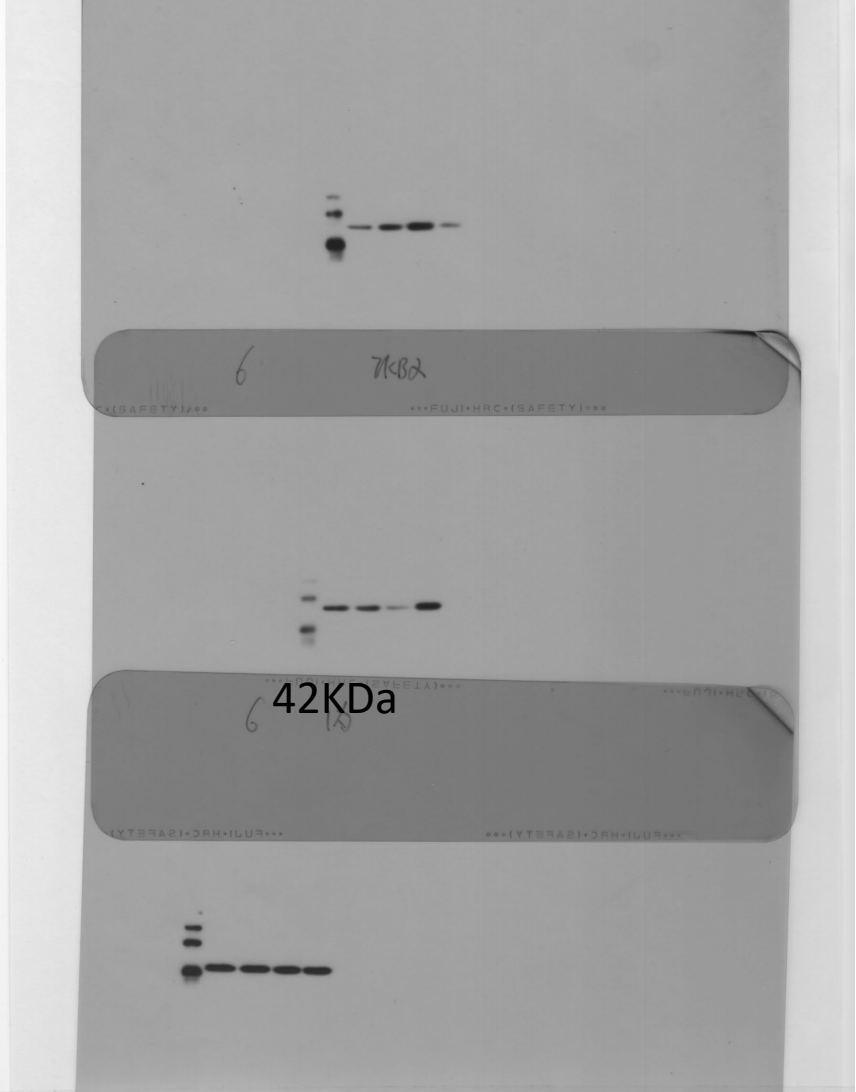
p-I $\kappa$ B $\alpha$   
(35 KDa)



I $\kappa$ B $\alpha$   
(35 KDa)

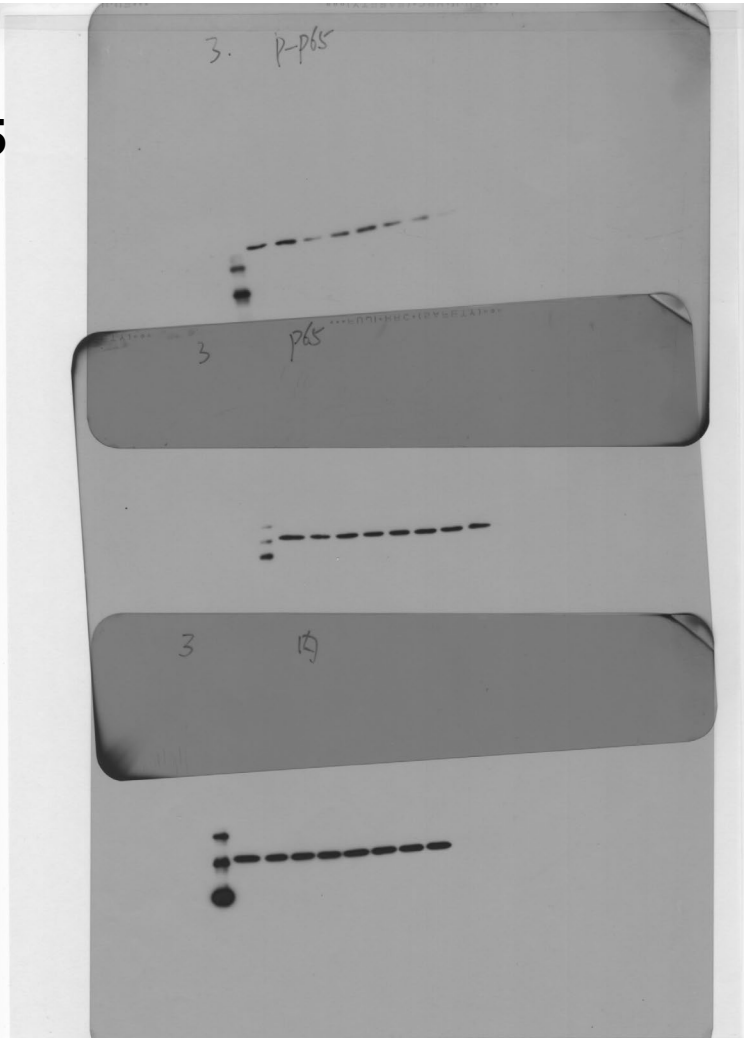


$\beta$ -Actin  
(42 KDa)



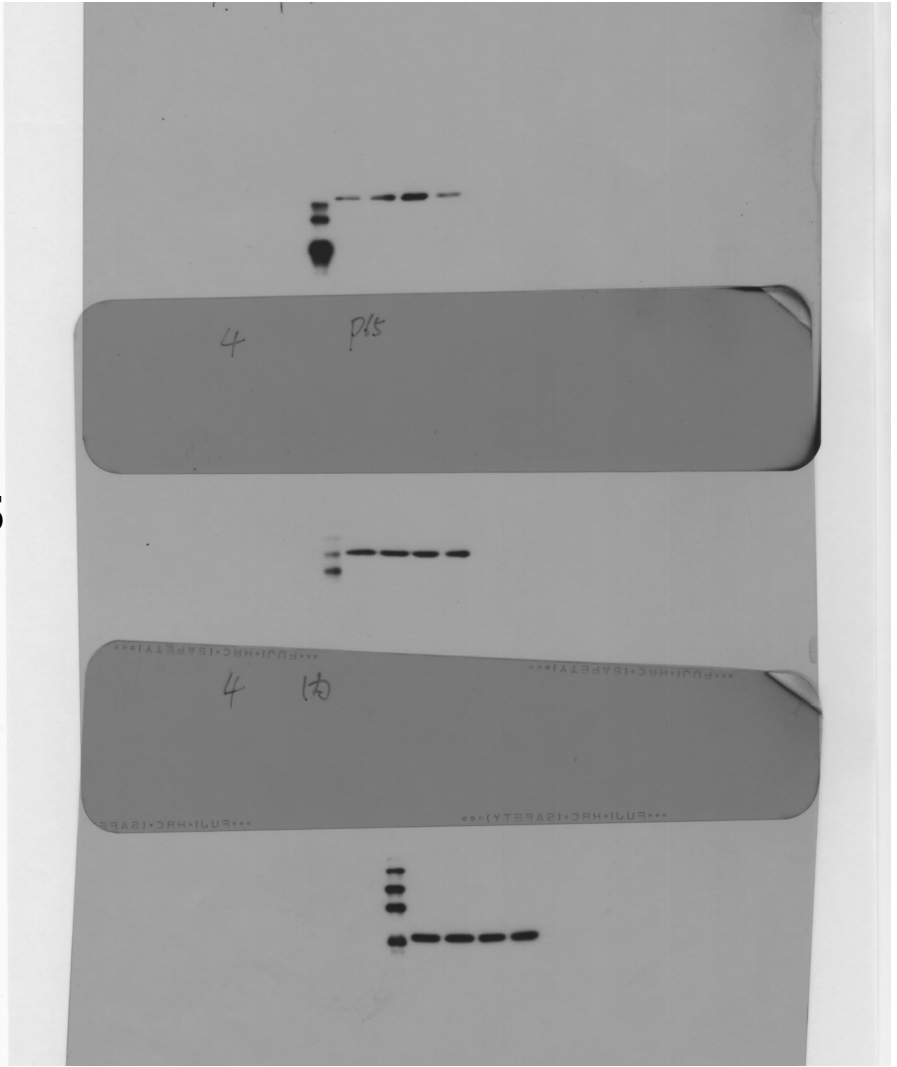
WB replicates original image (p-NFκB p65 ,NFκB p65 and β-Actin)

p-NFκB p65  
(65 KDa)



NFκB P65  
(65 KDa)

p-NFκB p65  
(65 KDa)



NFκB P65  
(65 KDa)

β-Actin  
(42 KDa)

β-Actin  
(42 KDa)