

Figure S1.

Semi-quantitative histogram of Western blot proteins. (A-B) Migration and invasion assays in BCPAP and TPC-1 cells under normoxia (20% O₂) or hypoxia (1% O₂) for 24h. (C-D) Western blot showed the expression of HIF-1a, YAP, LATS, LDHA, HK2, GLUT1, PKM2, and PGK1 proteins in BCPAP and TPC-1 cells under normoxia (20%O₂) or hypoxia (1%O₂) for 24h, respectively. (E-F) Migration and invasion assays in BCPAP and TPC-1 cells under hypoxia (1% O₂) for 24h after transfected with YAP siRNA or the use of the inhibitor CA3. (G-H) Western blot showed the expression of HIF-1a, GLUT1, HK2, PKM2, LDHA and PGK1 proteins in BCPAP

and TPC-1 cells under hypoxia (1%O₂) for 24h with the inhibition of YAP. (I-J) Western blot showed the expression of BRAF, p-ERK/ERK and p-MEK/MEK proteins in PTC cells under hypoxia (1%O₂) for 24h with the inhibition of YAP.

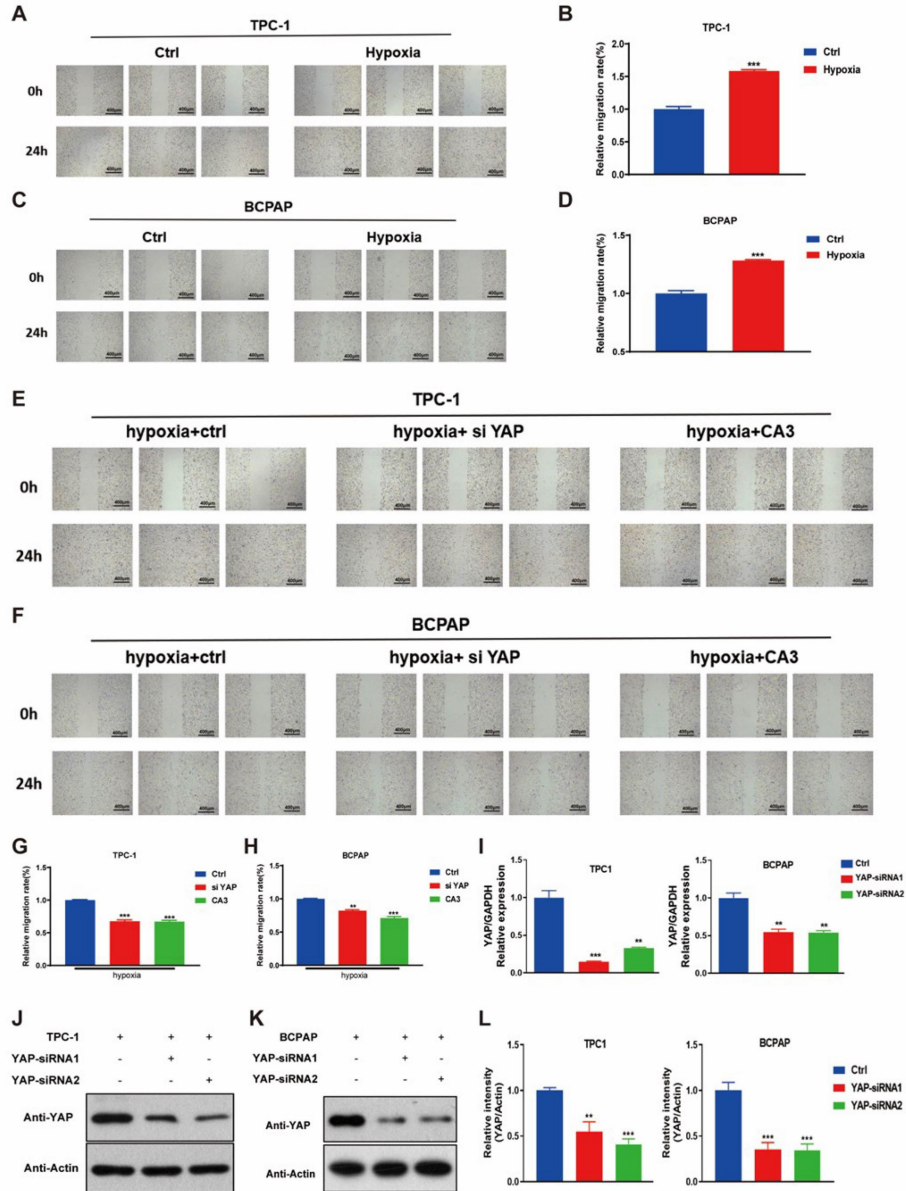


Figure S2.

(A-D) Migration and invasion assays in BCPAP and TPC-1 cells under normoxia (20% O₂) or hypoxia (1% O₂) for 24h (wound healing assays). Data are shown as the mean ± SEM of three independent experiments. (E-H) Migration and invasion assays in BCPAP and TPC-1 cells under hypoxia (1% O₂) for 24h after transfected with YAP siRNA or the use of the inhibitor CA3. (wound healing assays). (I-L) Real-time PCR and western blot were used to examine knockdown

efficiency of YAP in BCPAP and TPC-1 cells transfected with YAP siRNA. **p < 0.01, ***p < 0.001.

Supplementary Table 1.

Information about the western blotting antibodies in the study

Antibody Name	Source	Dilution Ratio	Company	Item Number
GLUT1	rabbit	1:2000	abcam	ab15730
HIF-1 α	mouse	1:1000	cst	#79233T
Sodium Iodide Symporter (NIS)	rabbit	1:1000	abcam	ab83816
p-YAP	rabbit	1:1000	cst	#13008
YAP	rabbit	1:1000	cst	#14074T
p-LATS	rabbit	1:1000	cst	9157S
LATS	rabbit	1:1000	abcam	ab243656
LDHA	rabbit	1:1000	cst	3582
HK2	rabbit	1:1000	cst	#2867
PKM2	rabbit	1:1000	abcam	ab137852
PGK1	rabbit	1:1000	abcam	ab199438
Flag	mouse	1:1000	proteintech	66008-2-ig
Histone H3	rabbit	1:1000	abcam	ab5103
GAPDH	mouse	1:20000	cst	#5174
Anti-mouse IgG(HRP)		1:5000	cst	#7076
Anti-rabbit IgG(HRP)		1:5000	cst	#7074

Supplementary file 1.

Real-time PCR primers

YAP	Forward: 5'-TAGCCCTGCGTAGCCAGTTA-3'
	Reverse: 5'-TCATGCTTAGTCCACTGTCTGT-3'
HIF-1 α	Forward: 5'-ATCCATGTGACCATGAGGAAATG-3'
	Reverse: 5'-TCGGCTAGTTAGGGTACACTTC-3'
GLUT1	Forward: 5'-TCTGGCATCAACGCTGTCTTC-3'
	Reverse: 5'-CGATACCGGAGCCAATGGT-3'
HK2	Forward: 5'-TTGACCAGGAGATTGACATGGG-3'
	Reverse: 5'-CAACCGCATCAGGACCTCA-3'
PKM2	Forward: 5'-ATAACGCCTACATGGAAAAGTGT-3'
	Reverse: 5'-TAAGCCCATCATCCACGTAGA-3'
LDHA	Forward: 5'-ATGGCAACTCTAAAGGATCAGC-3'
	Reverse: 5'-CCAACCCCAACAAGTGAATCT-3'
PGK1	Forward: 5'-GACCTAATGTCCAAAGCTGAGAA-3'
	Reverse: 5'-CAGCAGGTATGCCAGAAGCC-3'
NIS	Forward: 5'-CCTATCGCTATGGCCTCAAGT-3'
	Reverse: 5'-CGTGGCTACAATGTACTGCAAA-3'
GAPDH	Forward: 5'-GGAGCGAGATCCCTCCAAAAT-3'
	Reverse: 5'-GGCTGTTGTCATACTTCTCATGG-3'
GLUT1-WT	Forward: 5'-CTTACGCGTGCTAGCCTGGTCGGCTCAGCCTCCCG-3'
	Reverse: 5'-CGGAATGCCAAGCTTCTGTCCTGGGCGGCGCTCTG-3'
GLUT1-mut	Forward: 5'-CCGAAGCTCATTACTGCACTCCAGCCTGG-3'
	Reverse: 5'-GCAGTAATGAGCTTCGGCTCACTGTAACC-3'