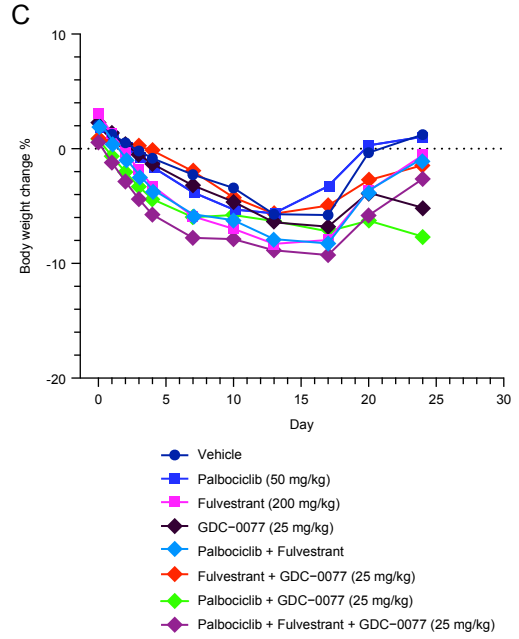
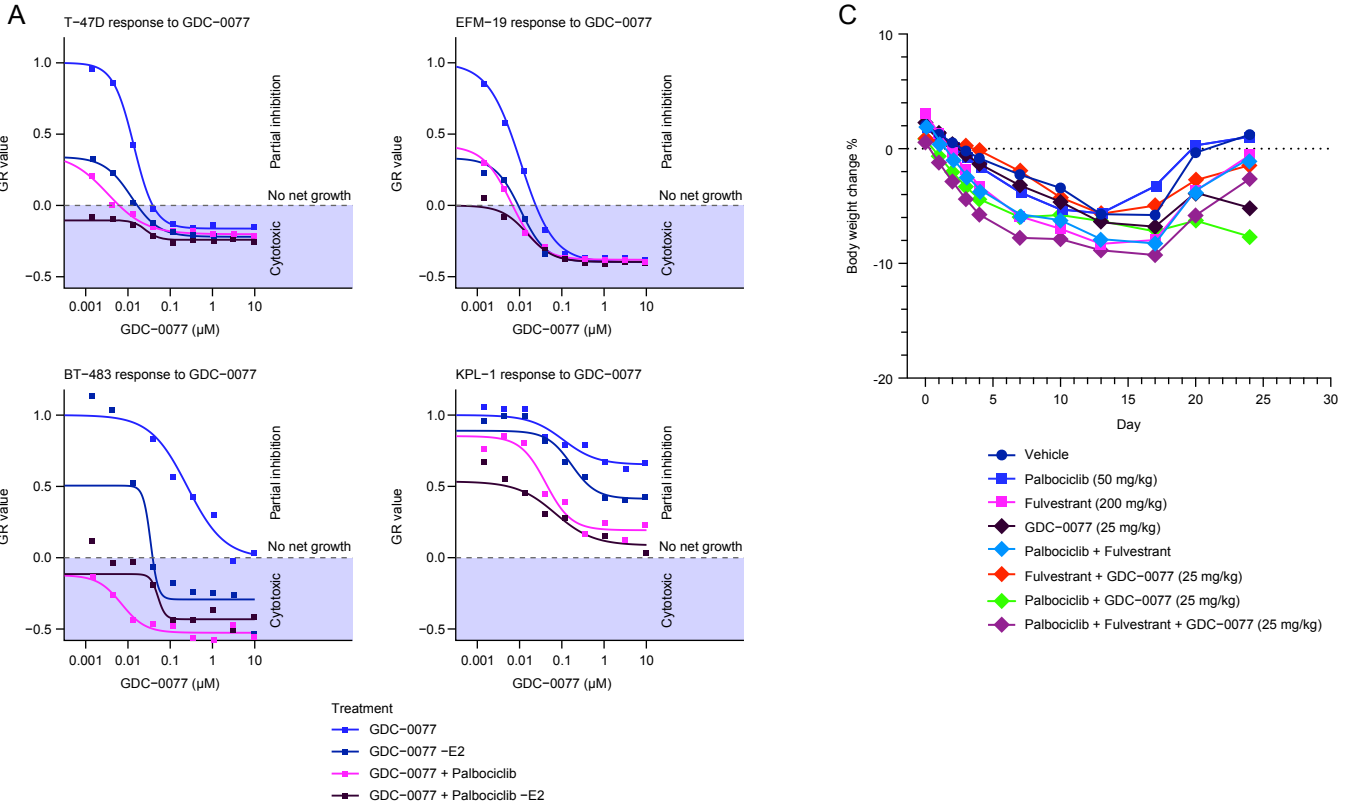
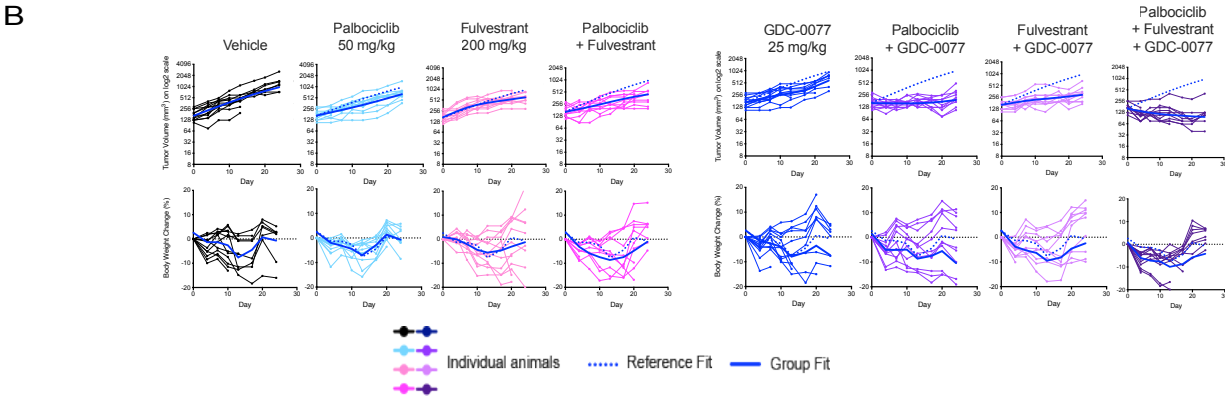


Figure S2



Individual tumor volumes and body weights



D Combination of Palbociclib Taselisib in the WHIM20 (erR1Y537S, PI3KE542K-/-) breast cancer xenograft

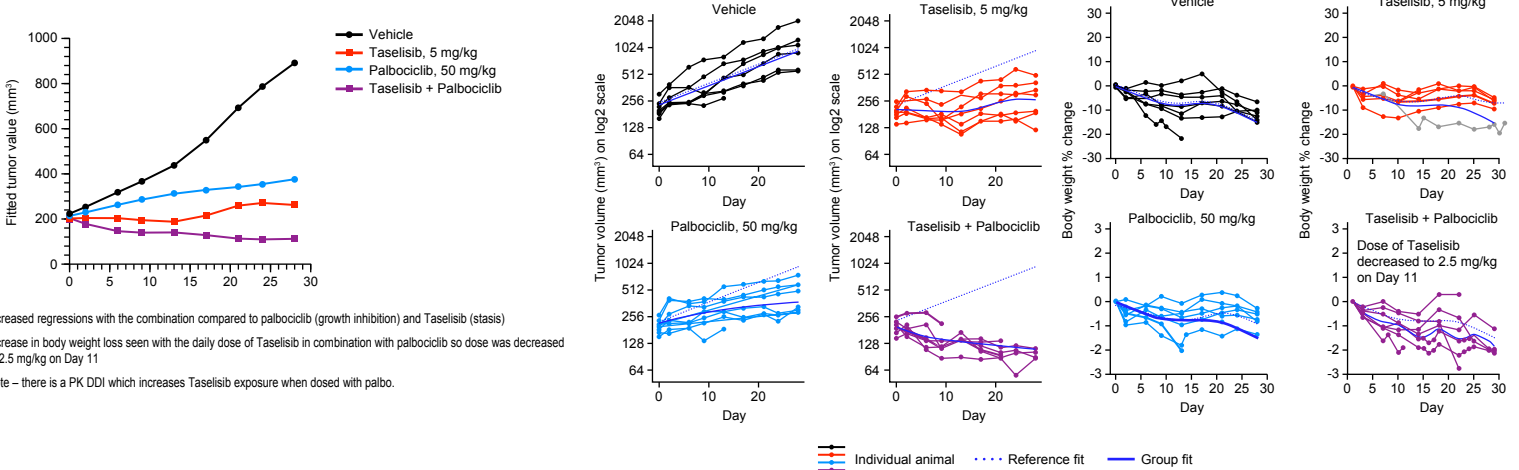


Figure S2

Activity of GDC-0077 in combination with Palbociclib and/ or Fulvestrant

(A) Dose response curve of hormone receptor (HR)-positive/HER2-negative breast cancer lines treated with GDC-0077 either alone (blue), without E2 to mimic aromatase inhibitor (dark blue), with palbociclib at 0.15 μ M (purple), or with palbociclib at 0.15 μ M (purple) and without E2 (dark purple). Negative values indicate a cytotoxic response. y-axis shows normalized growth inhibition (GR value).

(B) Individual animal data with fits of palbociclib, fulvestrant and GDC-0077 as single agent or in combination in MCF7 xenografts.

(C) Weight loss for MCF-7 xenograft experiment.

(D) Efficacy and weight loss for WHIM20 xenograft experiment.