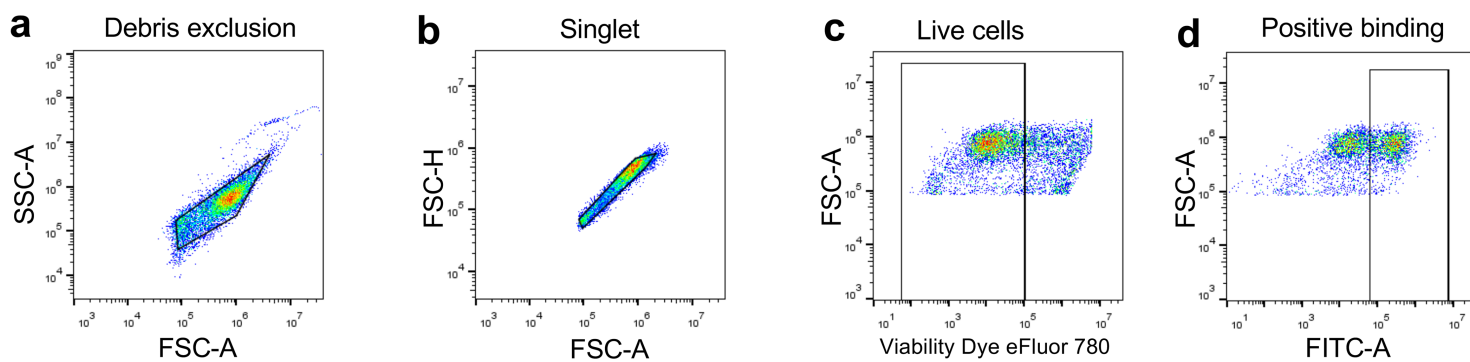


Supplementary Figures



Supplementary Figure 1. Gating strategy to determine the binding of each S protein to bat ACE2-expressing 293T cells. **(a)** Forward and side scatter density plots for excluding debris. **(b)** Forward scatter height (FSC-H) versus forward scatter area (FSC-A) plot for doublet exclusion. **(c)** Fixable Viability Dye eFluor 780 was used to exclude dead cells. **(d)** FITC-A was used to identify cells that specifically bound to the target proteins.