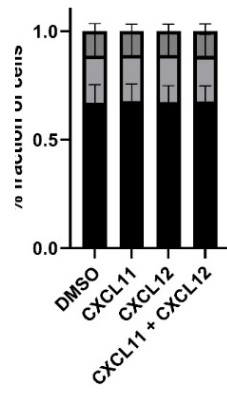
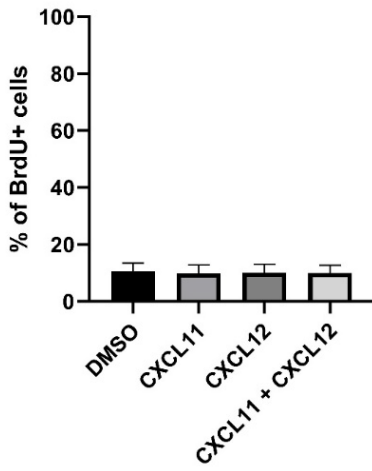
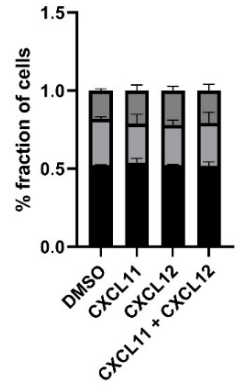
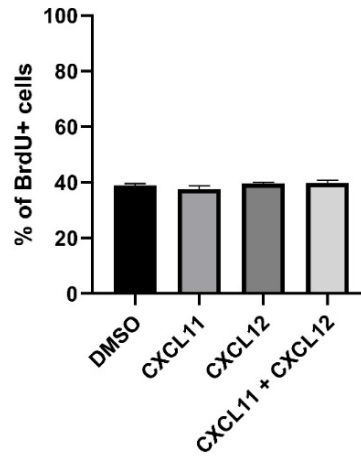


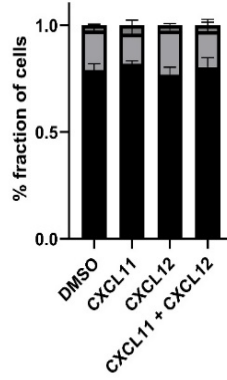
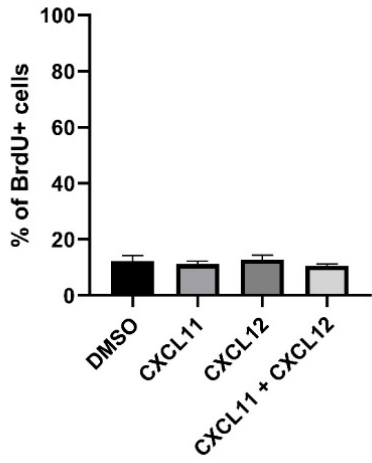
A549



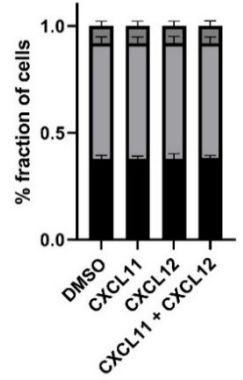
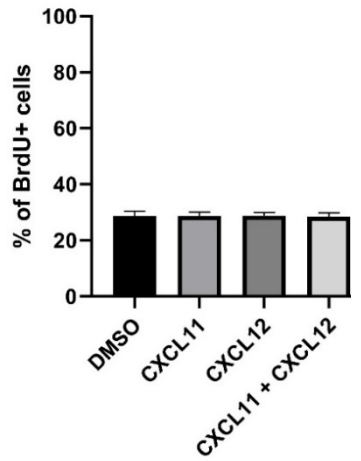
A767



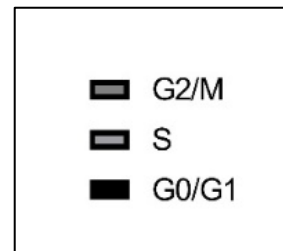
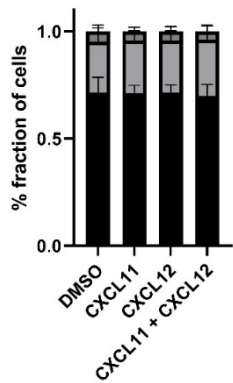
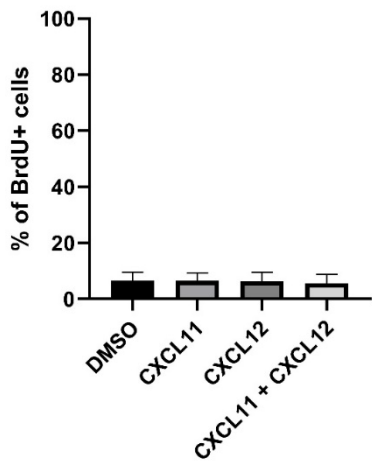
A772



DLD-1



MDA-MB-231



Additional file 10

CXCL11 and/or CXCL12 remain without effects on tumor cell proliferation.

Cells were maintained with serum-free medium supplemented with CXCL11 (100ng/ml) and/or CXCL12 (100ng/ml) for 24h. The final 2h, medium was additionally supplemented with bromodeoxyuridine (10 μ M). For FACS analysis, cells were stained for BrdU and DNA was labelled with 7-AAD. Data show average fraction (%) \pm SD of labeled cells as determined in 4-6 experiments.