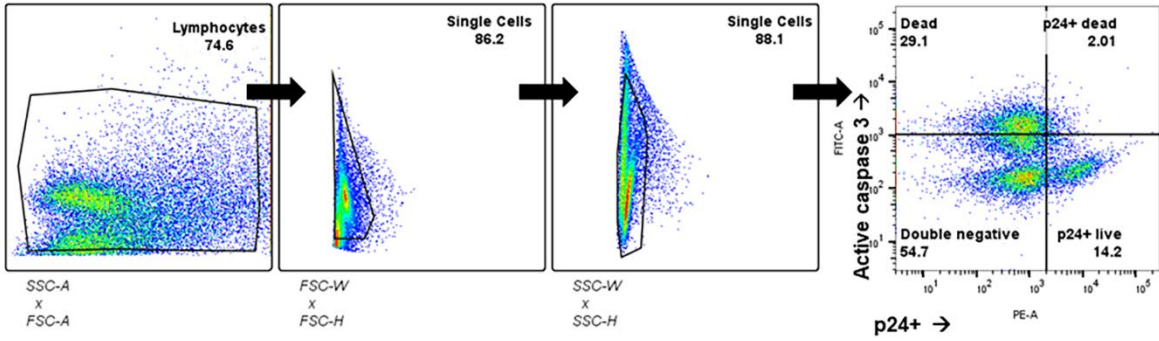
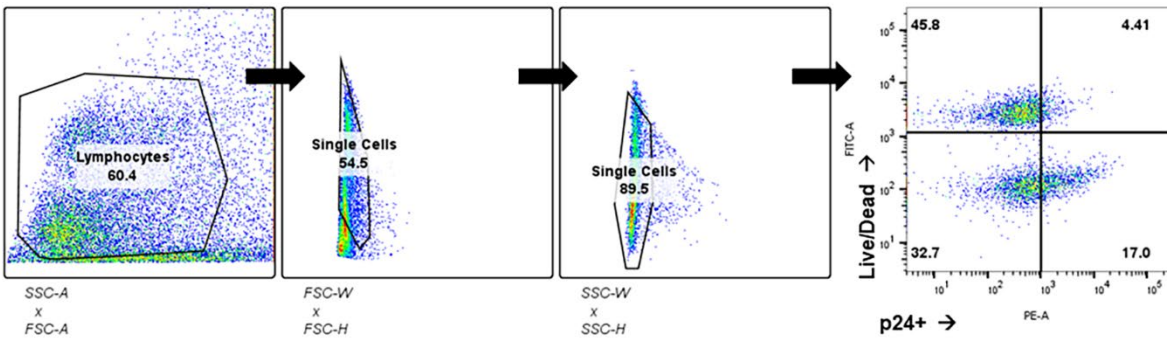


Supplemental Figure 1

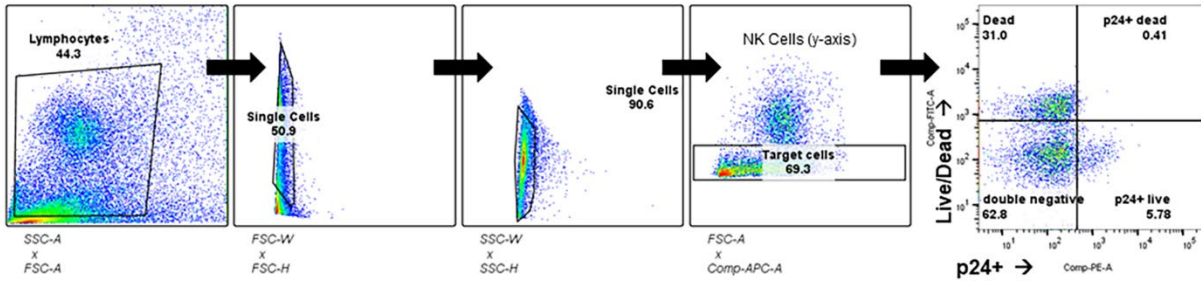
A



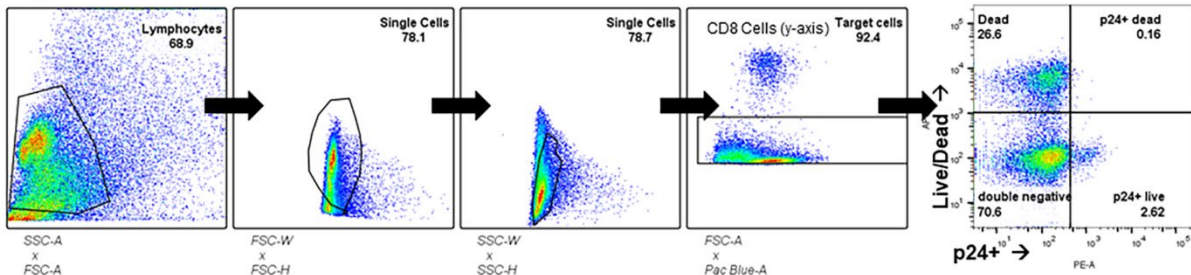
B



C



D



Supplemental figure 1: Gating strategy for figures 1-4

A Gating strategy for CH11 and SKT experiments. **B** Gating strategy for Perforin/Granzyme B experiments. **C** Gating strategy for NK experiments. NK cells were stained with an APC conjugated antibody and excluded from the target cell population (panel 4). **D** Gating strategy for CD8 experiments. CD8 cells were stained with a PacBlue conjugated antibody and excluded from the target cell population (panel 4).