

Supplementary materials

Clonal spread of pESI-positive multidrug-resistant ST32 *Salmonella* *Infantis* among broilers and humans in Slovenia

Bojan Papić, Darja Kušar, Jasna Mićunović, Mateja Pirš, Matjaž Ocepek, Jana Avberšek

This supplementary file includes:

Figure S1 cgMLST tree of 161 *Salmonella* Infantis isolates colored according to the food business operation.

Other supplementary information for this manuscript includes:

Supplementary Tables S1–S6 (separate sheets in the supplementary Excel file named Tables_S1-S6.xlsx):

Table S1 Isolate metadata.

Table S2 Presence/absence profile of pESI-encoded genes.

Table S3 Presence/absence profiles of antimicrobial resistance genes and resistance-associated mutations.

Table S4 Genetic background of antimicrobial resistance.

Table S5 Pairwise ANIm values and alignment coverage (in parenthesis) for the pESI-like plasmids included in this study.

Table S6 List of complete pESI-like plasmid sequences used in this study.

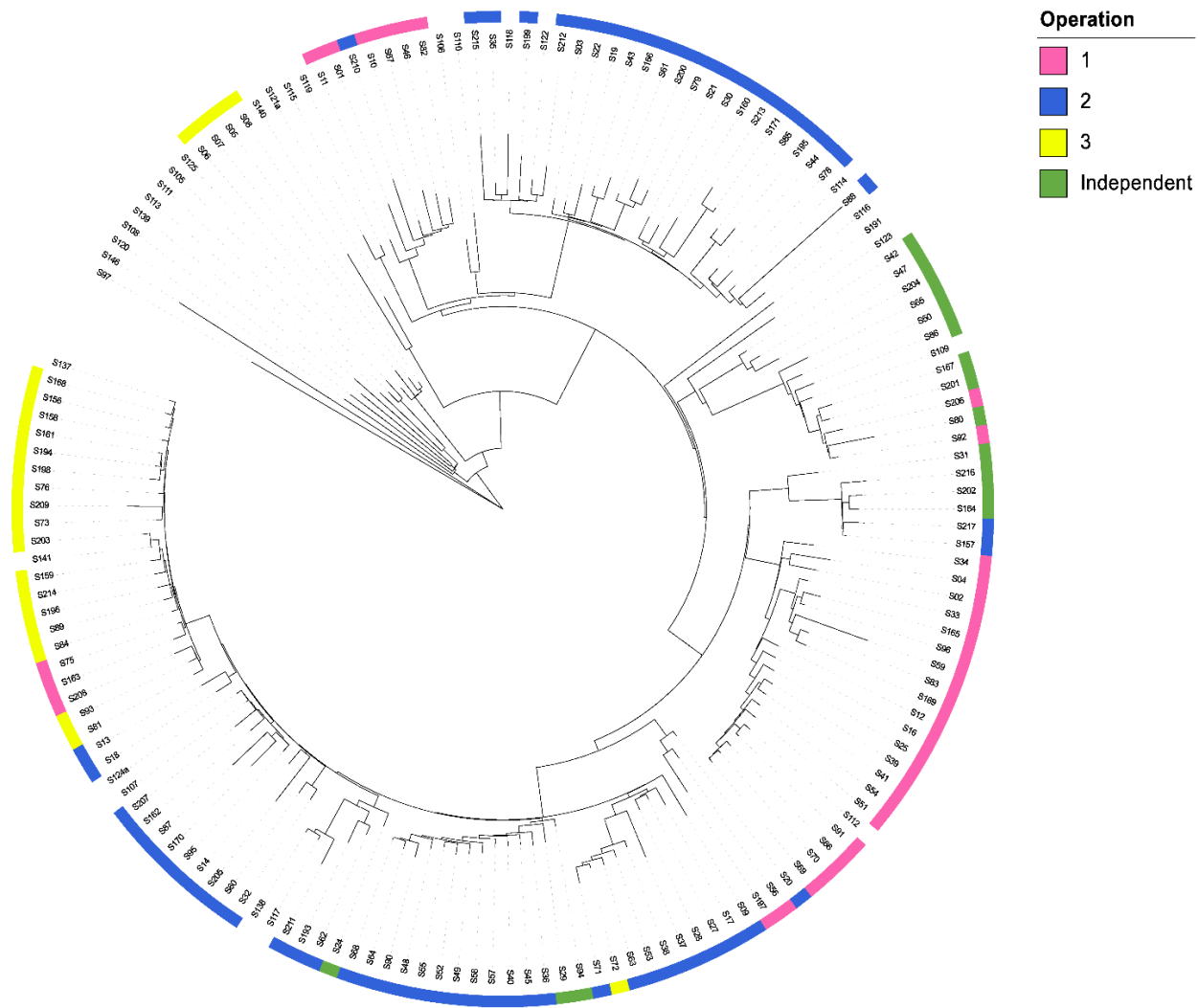


Figure S1 cgMLST tree of 161 *Salmonella* Infantis isolates colored according to the food business operation. Human isolates are denoted in white.