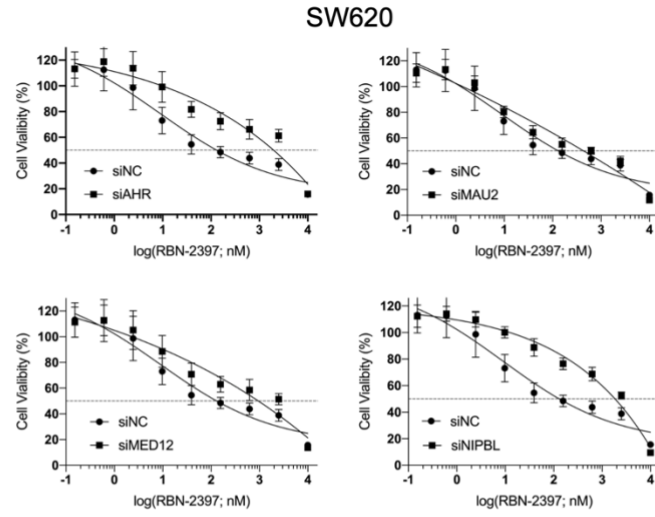
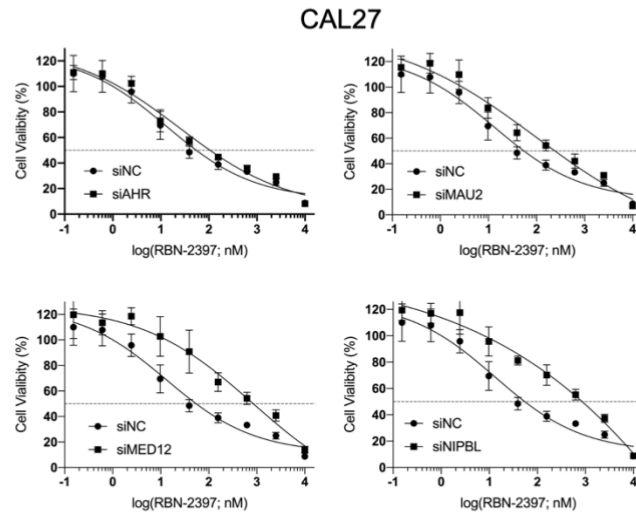
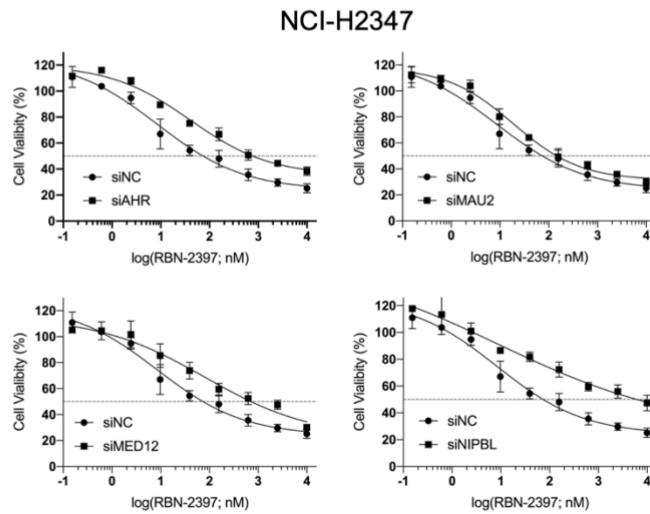


**A****B****C***Fig.S3. Chen, et al*

**Supplementary Fig. 3 Validation of CRISPR/Cas9 screening hit in in multiple PARP7 inhibitor-sensitive cell lines.**

**A**, SW620 cells were transfected with siNC, siAHR, siMAU2, siMED12 or siNIPBL for 24 h, and then subjected to 96-well plates, cells were treated with RBN-2397 for 7 days and then subjected to Cell Titre-Glo assay. **B**, CAL27 cells were transfected with siNC, siAHR, siMAU2, siMED12 or siNIPBL for 24 h, and then subjected to 96-well plates, cells were treated with RBN-2397 for 7 days and then subjected to Cell Titre-Glo assay. **C**, NCI-H2347 cells were transfected with siNC, siAHR, siMAU2, siMED12 or siNIPBL for 24 h, and then subjected to 96-well plates, cells were treated with RBN-2397 for 7 days and then subjected to Cell Titre-Glo assay. Data is plotted as mean  $\pm$  SD for triplicate values.