



COVID-19 instigates adipose browning and atrophy through VEGF in small mammals

In the format provided by the authors and unedited

**COVID-19 instigates adipose browning and atrophy
through VEGF in small mammals**

Supplementary Table 1	Clinical characteristics
Supplementary Table 2	Primer sequences
Supplementary Fig. 1	Raw data of gels for immunoblots

Supplementary Table 1. Clinical characteristics

Groups	Age (years)	Sex	BMI (kg/m²)
Non-infected			
Patient 1	69	Male	34.5
Patient 2	74	Male	35.5
Patient 3	75	Female	26.9
Patient 4	61	Female	24.9
Covid-19			
Patient 1	61	Male	27
Patient 2	55	Male	24.7
Patient 3	81	Female	26.9
Patient 4	57	Female	33.1

Supplementary Table 2. Primer sequences

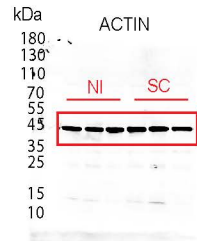
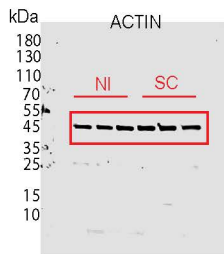
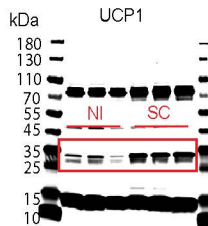
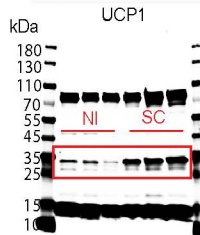
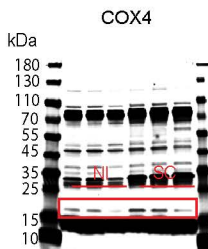
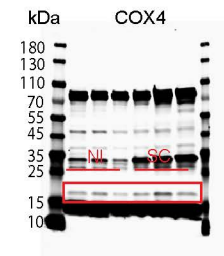
Gene	Species	Forward primer sequence	Reverse primer sequence
<i>Actin</i>	mouse	5'-AGGCCAGAGCAAGAGAGG-3'	5'-TACATGGCTGGGGTGTGAA-3'
<i>Ucp1</i>	mouse	5'-AAACAGAAGGATTGCCGAAA-3'	5'-TGCATTCTGACCTTCACGAC-3'
<i>Cox4</i>	mouse	5'-CTATGTGTATGGCCCCATCC-3'	5'-AGCGGGCTCTCTCACTTCTTC-3'
<i>Cox7a</i>	mouse	5'-CAGCGTCATGGTCAGTCTGT-3'	5'-AGAAAACCGTGTGGCAGAGA-3'
<i>Cox8b</i>	mouse	5'-GAACCATGAAGCCAACGACT-3'	5'-GCGAAGTTCACAGTGGTTCC-3'
<i>Cidea</i>	mouse	5'-TGCTCTTCTGTATCGCCCAGT-3'	5'-TGCTCTTCTGTATCGCCCAGT-3'
<i>Prdm16</i>	mouse	5'-CAGCACGGTGAAGCCATTC-3'	5'-GCGTGCATCCGCTTGTG-3'
<i>Car9</i>	mouse/hamster	5'-CTGAAGACAGGATGGAGAAG-3'	5'-GCAGAGTGCGGCAGAATG-3'
<i>Hif1a</i>	mouse/hamster	5'-GTCGGACAGCCTCACCAAACAG-3'	5'-TAGGTAGTGAGCCACCAGTGTCC-3'
<i>Vegf</i>	mouse/hamster	5'-ATCCGCATGATCTGCATGG-3'	5'-AGTCCCATGAAGTGATCAAGTCA-3'
<i>Actin</i>	hamster	5'-AAGTGTGACGTCGACATCCG-3'	5'-GATCCACACAGAGTACTTGC-3'
<i>Ucp1</i>	hamster	5'-GAGCTGGTAACATATGACCT-3'	5'-TGTCCTGGCAGAGAGTTGAT-3'
<i>Cox4</i>	hamster	5'-AACAGGAGACCAATGAGTG-3'	5'-TTGGCCTTCATGTCCAGCAT-3'
<i>Dio2</i>	hamster	5'-TACGGGGTAGCTTTTGAGCG-3'	5'-CTCCGCACTTCTTGGAGGTT-3'
<i>Tbx1</i>	hamster	5'-GGCGGGCAGGCGGATGTTC-3'	5'-TGTCATCCACAGGCACAAAG-3'
<i>Tnfrsf9</i>	hamster	5'-ATCTGCAGAGTGTGCGAAGG-3'	5'-TAACTCTTGACCCGGCTTGC-3'
<i>Pdgfra</i>	hamster	5'-GTGGGTATCGGATGGCCAAA-3'	5'-TTGTACTGTCCAGGCAGCAG-3'
<i>ACTIN</i>	human	5'-ATTGCCGACAGGATGCAGAA-3'	5'-GCTGATCCACATCTGCTGGAA-3'
<i>UCP1</i>	human	5'-CAACCCACAGAGGTCGTGAA-3'	5'-CCCGTGTAGCGAGGTTTGTGAT-3'
<i>COX4</i>	human	5'-CAGGGTATTTAGCCTAGTTGGC-3'	5'-GCCGATCCATATAAGCTGGGA-3'
<i>COX7a</i>	human	5'-TTCACGCAGAAGTTGGCAGG-3'	5'-GAGGTCAGTTTGTGTTGGTGTG-3'

Supplementary Figure 1

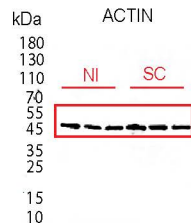
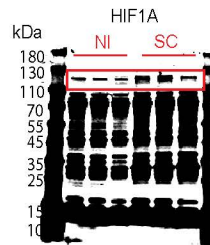
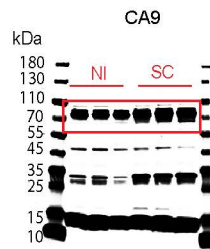
Raw data of gels for immunoblots.

Whole gel images. Boxes imply area shown in the figure.

Full scans of immunoblots in Fig. 1f



Full scans of immunoblots in Fig. 1h

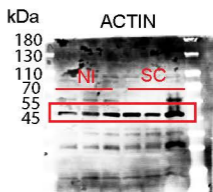
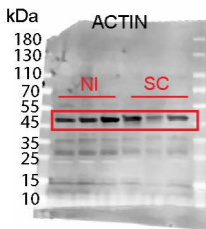
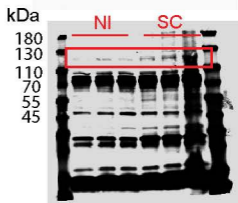
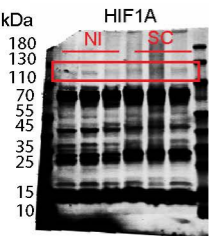
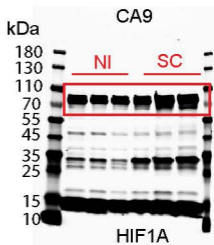
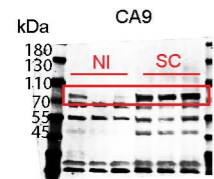


Supplementary Figure 1

Raw data of gels for immunoblots.

Whole gel images. Boxes imply area shown in the figure.

Full scans of immunoblots in Extended Data Fig. 2a and 2c



Supplementary Figure 1

Raw data of gels for immunoblots.

Whole gel images. Boxes imply area shown in the figure.

Full scans of immunoblots in Extended Data Fig. 5c and 5d

