

## **Supplemental Material**

### **Serum albumin: a pharmacokinetic marker for optimizing treatment outcome of immune checkpoint blockade**

Ming Zheng<sup>1,2,\*</sup>

#### **Authors' Affiliations:**

1. Institute of Military Cognition and Brain Sciences, Academy of Military Medical Sciences, 27 Taiping Road, Beijing 100850, China

2. Beijing Institute of Basic Medical Sciences, 27 Taiping Road, Beijing 100850, China

\* Corresponding author.

Correspondence to: **Ming Zheng, MD, Ph.D.**, Institute of Military Cognition and Brain Sciences, Academy of Military Medical Sciences, 27 Taiping Road, Beijing 100850, China.

**E-mail:** [mmzheng@fmmu.edu.cn](mailto:mmzheng@fmmu.edu.cn) or [zhengming\\_china@163.com](mailto:zhengming_china@163.com);

**ORCID ID:** <https://orcid.org/0000-0002-3651-7701>;

**Researcher ID:** <https://publons.com/researcher/4413823/ming-zheng>.

#### **This PDF file includes:**

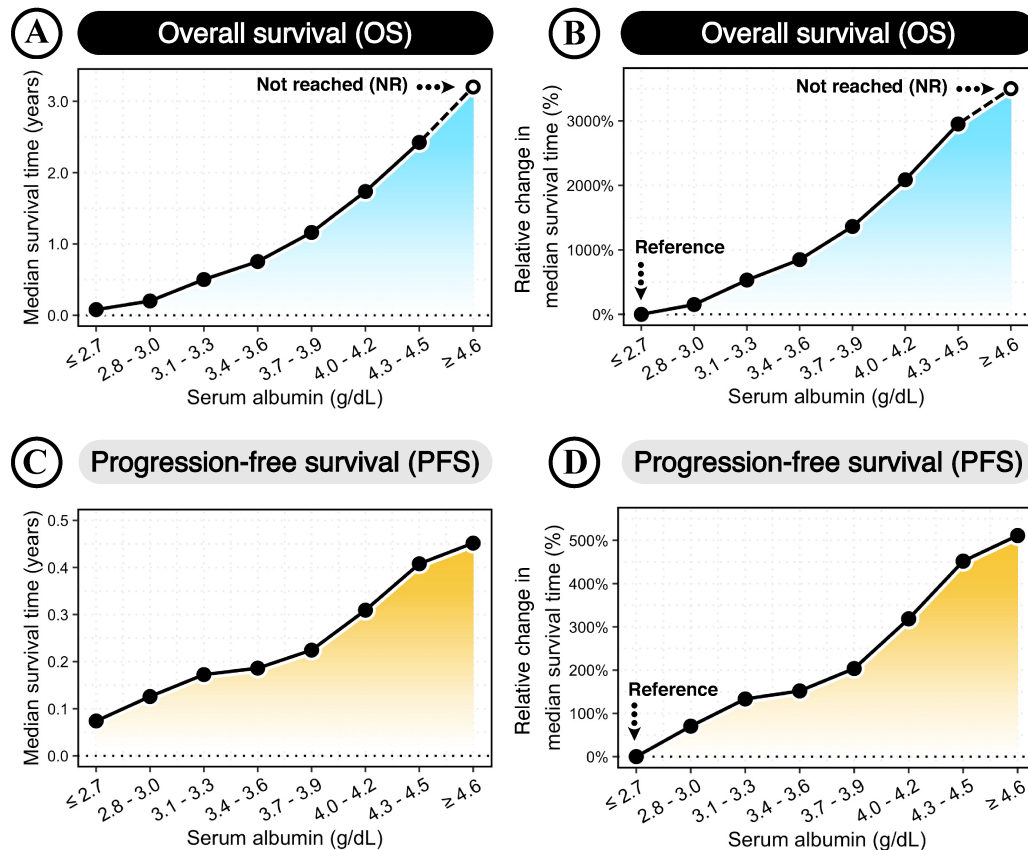
Supplementary Figure

## Supplemental Figure S1

Characteristics	Percentage (%)
<b>Sex:</b> female	45.2
male	54.8
<b>Age (years):</b> ≤65 yrs	45.4
>65 yrs	54.6
<b>Stage:</b> I/II/III	6.6
IV	93.4
<b>Chemotherapy:</b> no	31.3
yes	68.7
<b>ICB drug class:</b> PD1/PD-L1/CTLA4	82.9
combination	17.1
<b>Cancer type:</b> Bladder	5.5
Breast	1.7
Colorectal	3.1
Endometrial	4.4
Esophageal	3.0
Gastric	4.3
Head & Neck	4.7
Hepatobiliary	3.5
Melanoma	12.6
Mesothelioma	2.3
NSCLC	36.4
Ovarian	2.1
Pancreatic	2.4
Renal	6.2
Sarcoma	4.5
SCLC	3.4

**Supplemental Figure S1. Demographics, baseline characteristics, and treatment of cancer patients.**

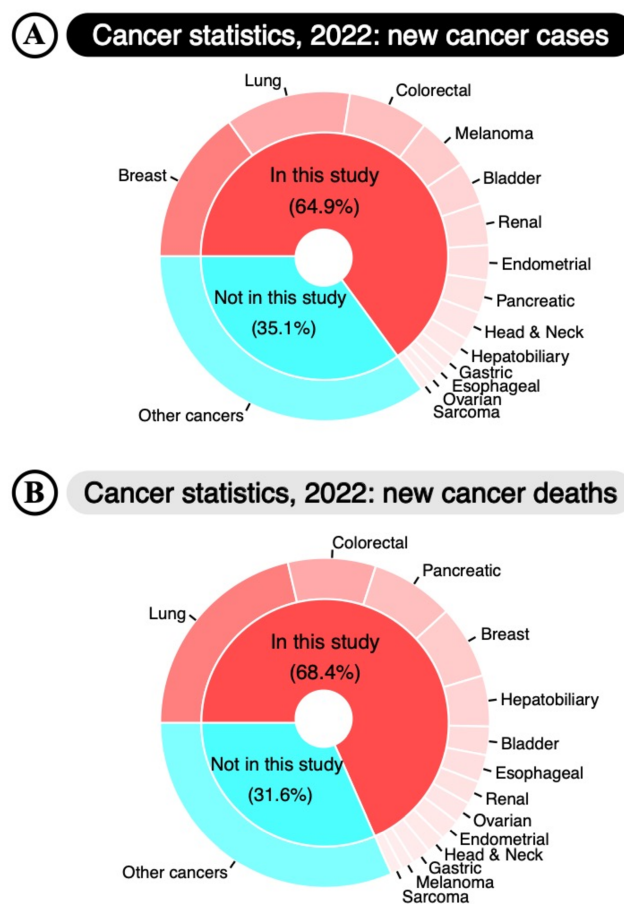
## Supplemental Figure S2



**Supplemental Figure S2. Improved overall survival (OS) and progression-free survival (PFS) according to serum albumin levels for ICB therapy.**

(A-D) The median survival times of OS (A) and PFS (C) across different serum albumin levels. The relative changes in median survival time of OS (B) and PFS (D) across different serum albumin levels, compared to the reference group with the lowest serum albumin level ( $\leq 2.7$  g/dL). The hollow dot indicates that the median survival time was not reached (NR).

## Supplemental Figure S3



**Supplemental Figure S3. Estimated new cancer cases and deaths by cancer types in the United States in 2022.**

(A-B) The donut plot shows the percentage of estimated new cancer cases (A) and deaths (B) by cancer types in the United States in 2022. The red color represents the cancer types analyzed in this study, and the blue color represents the cancer types not analyzed in this study.