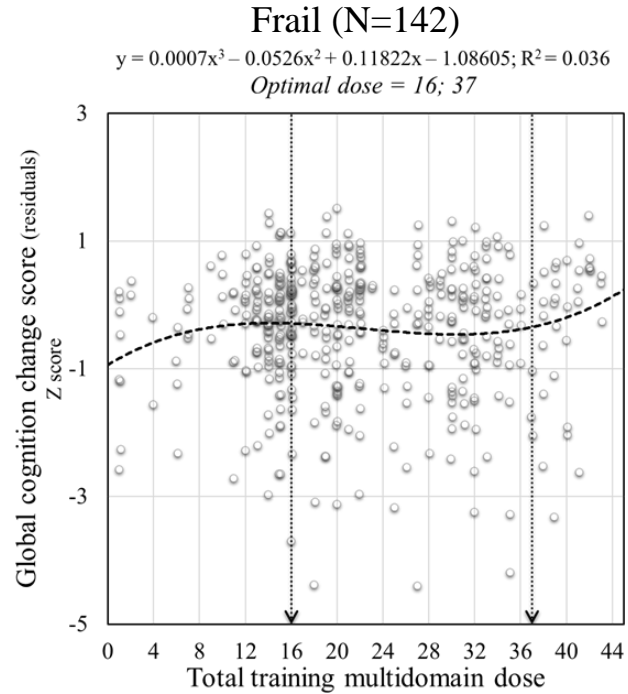
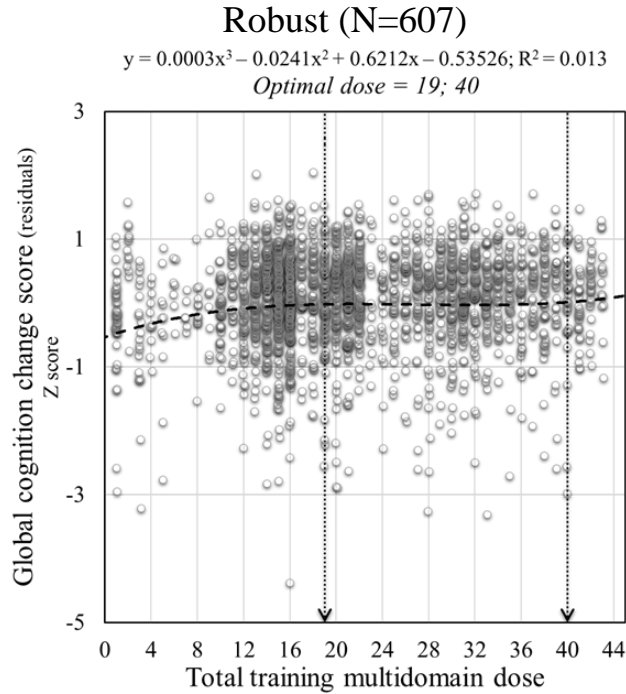
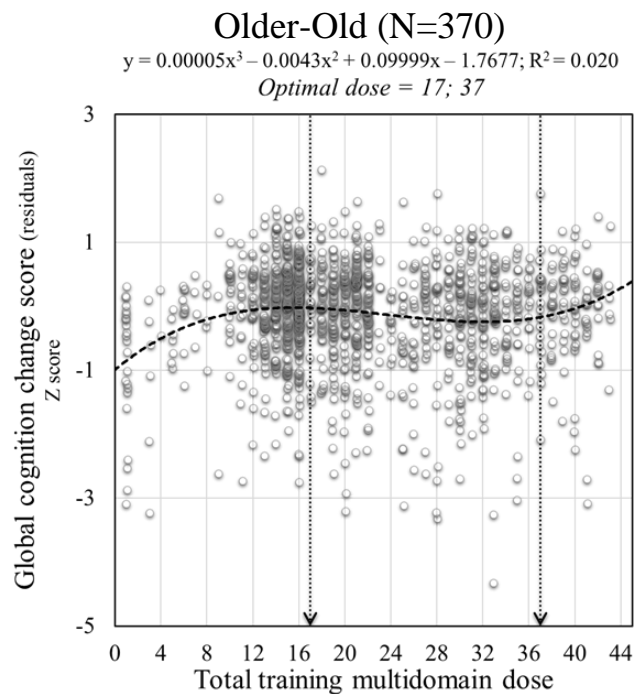
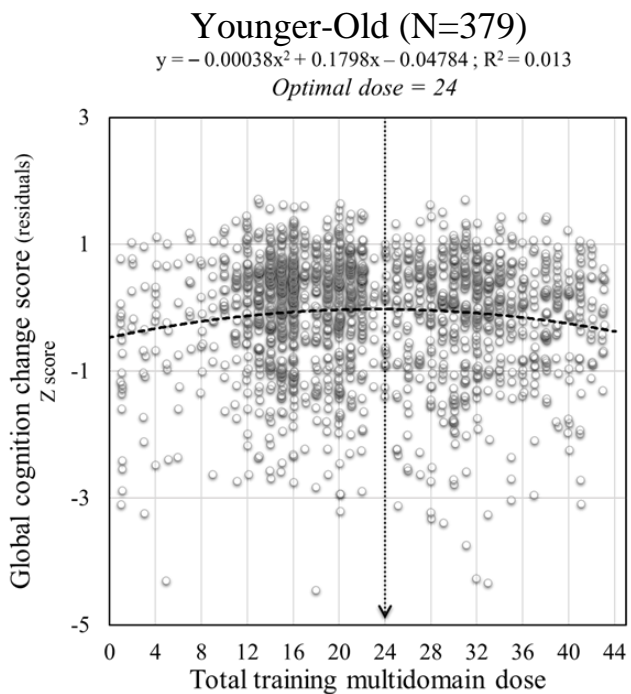


Figure S2: Scatter plots of total multidomain training dose interaction models on change scores (residuals) on (A) global cognition with frailty (B) global cognition with age (C) delayed memory with age. Circles represent individual participants residuals for each time model. The equation for each model is provided with y representing the residual and x representing the dose. The arrow represents inflection points

A) Global cognition: Interaction with frailty



B) Global cognition: Interaction with age

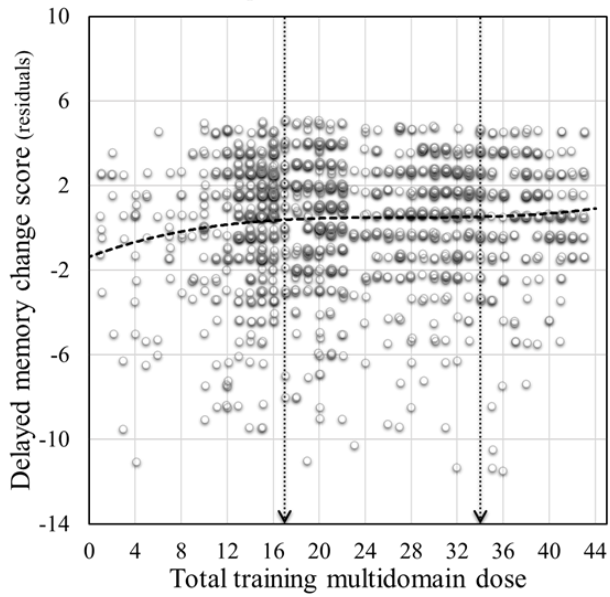


C) Delayed memory: Interaction with age

Younger-Old (N=379)

$$y = 0.00019x^3 - 0.01435x^2 + 0.33011x - 1.93852; R^2 = 0.015$$

Optimal dose = 17; 34



Older-Old (N=370)

$$y = 0.00018x^3 - 0.01287x^2 + 0.25086x - 1.70512; R^2 = 0.009$$

Optimal dose = 14; 34

