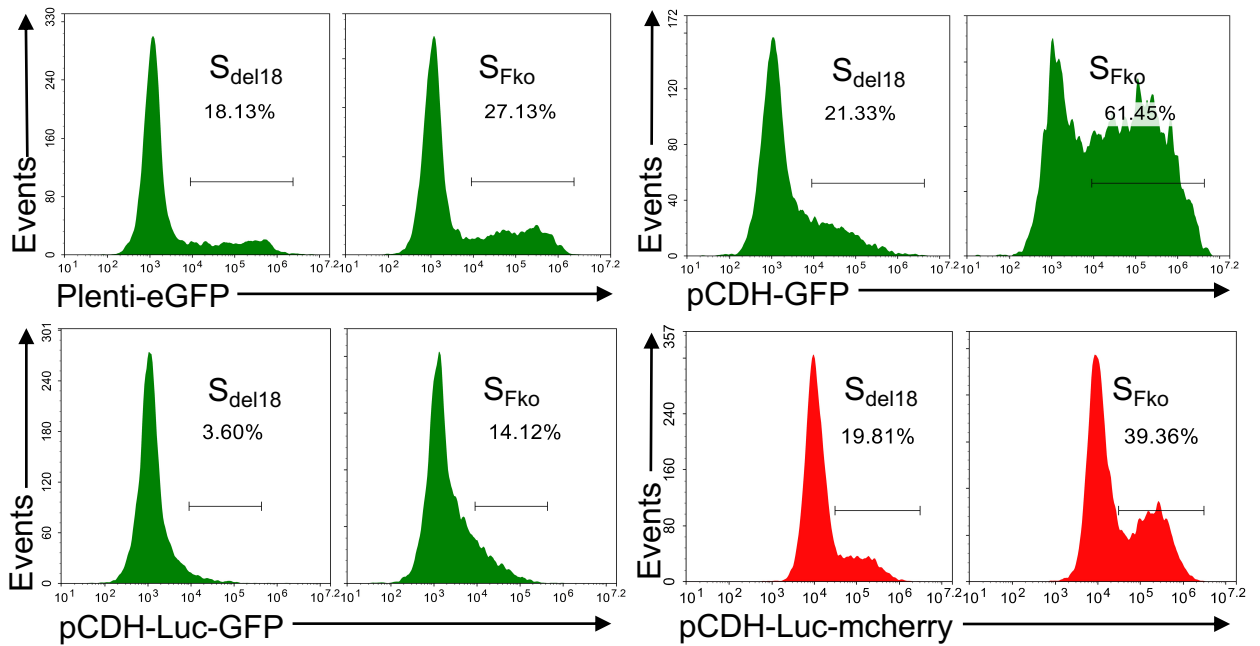


Supplementary Fig. 1



Supplementary Fig. 1 Validation of the Furin cleavage site deletion enhanced PVs infection with plenti-eGFP, pCDH-GFP, pCDH-Luc-GFP, pCDH-Luc-mcherry et al vectors by flow analysis. Infection efficiency was higher in S_{Fko} PVs than in S_{del18} PVs with all vectors. FITC channel detected eGFP/GFP fluorescent protein (530/30nm). PE-Texas Red channel detected mCherry fluorescent protein (615/20nm).