

Additional file 2

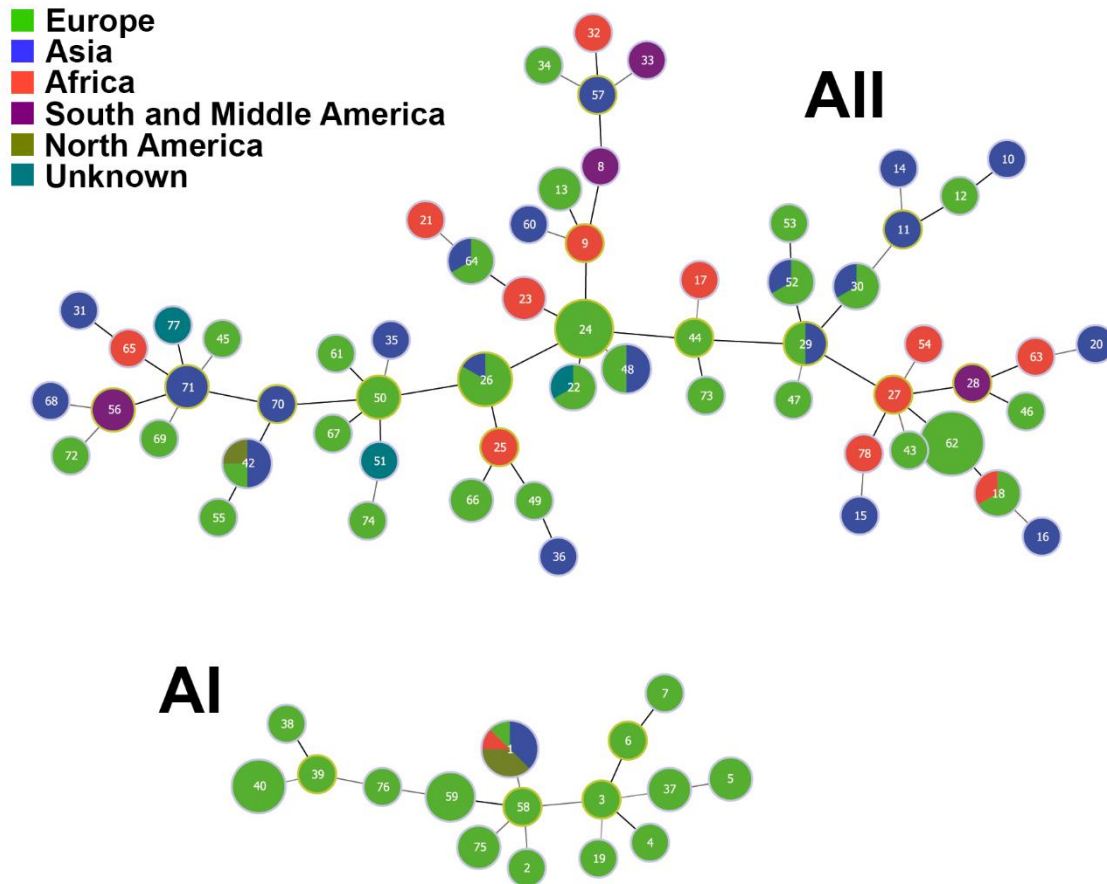


Fig. S1. Sub-assemblage AI- and AII-specific minimum spanning tree (MST). MST analysis based on profile data of all 77 various MLST types (except the single assemblage AIII MLST). Each spot represents one MLST type and size indicates the number of underlying samples (in log scale). Suspected origins of isolates are indicated by the color code.