

## **Supplementary Materials**

**Special issue “The advance of solid tumor research in China”:  
Multi-omics analysis based on 1311 clear cell renal cell  
carcinoma samples identify a glycolysis signature associated  
with prognosis and treatment response**

Xi Tian, Yue Wang, Wenhao Xu, Haidan Tang, Shuxuan Zhu, Aihetaimujiang Anwaier,  
Wangrui Liu, Wenfeng Wang, Wenkai Zhu, Jiaqi Su, Yuanyuan Qu, Hailiang Zhang,  
Dingwei Ye

### **Table of contents:**

Supplementary Tables: Table-S1 (available in separate files)

Supplementary Tables: Table-S2 (available in separate files)

Supplementary Tables: Table-S3 (available in separate files)

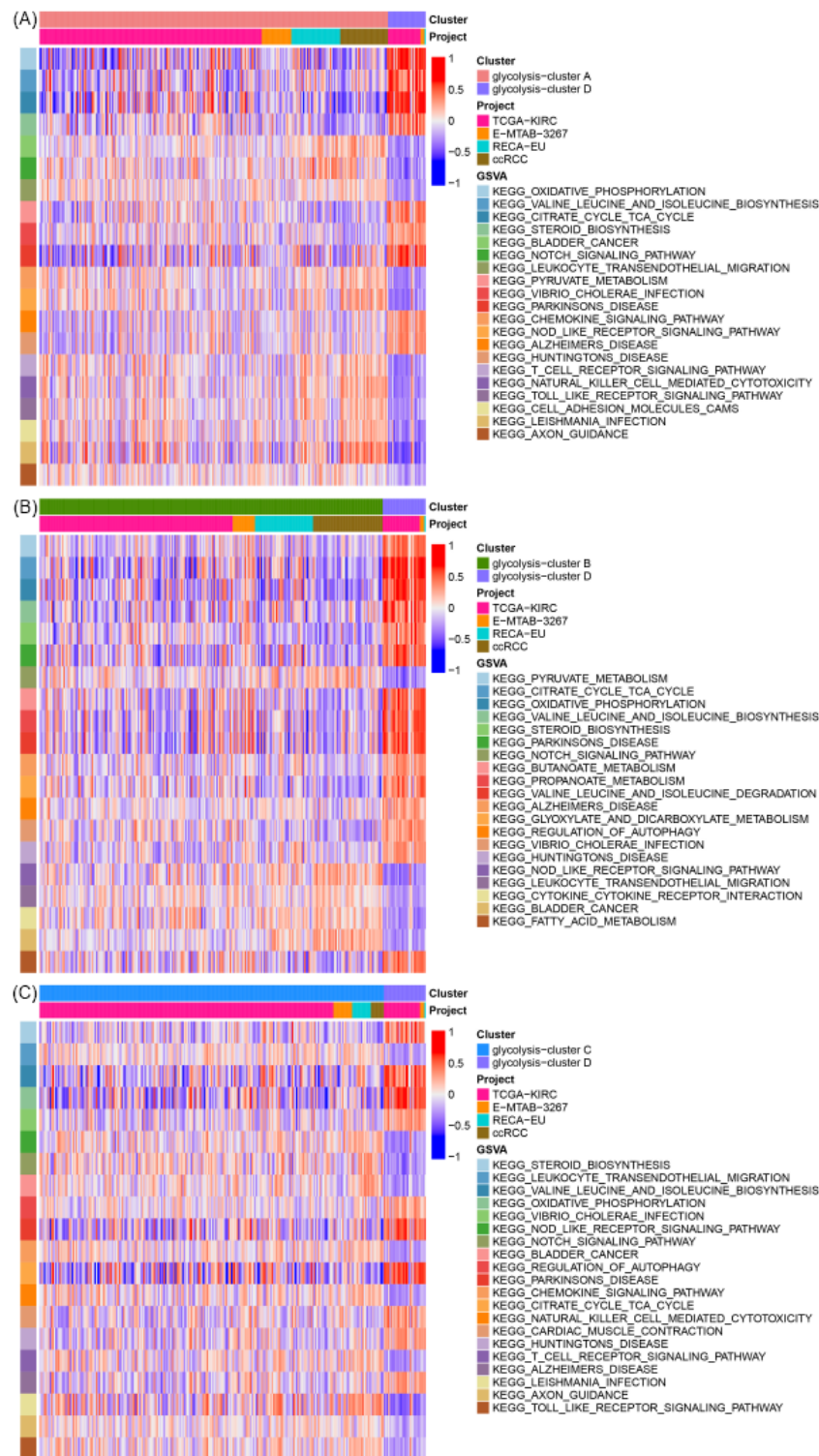
Supplementary Tables: Table-S4 (available in separate files)

Supplementary Tables: Table-S5 (available in separate files)

Supplementary Tables: Table-S6 (available in separate files)

Supplementary Figure: Figure-S1

Figure-S1



**Figure-S1** Comparison of glycolysis cluster D with other glycolysis cluster by enrichment analysis based on KEGG database. (A) Comparison of glycolysis cluster D with glycolysis cluster A. (B) Comparison of glycolysis cluster D with glycolysis cluster B. (C) Comparison of glycolysis cluster D with glycolysis cluster C.