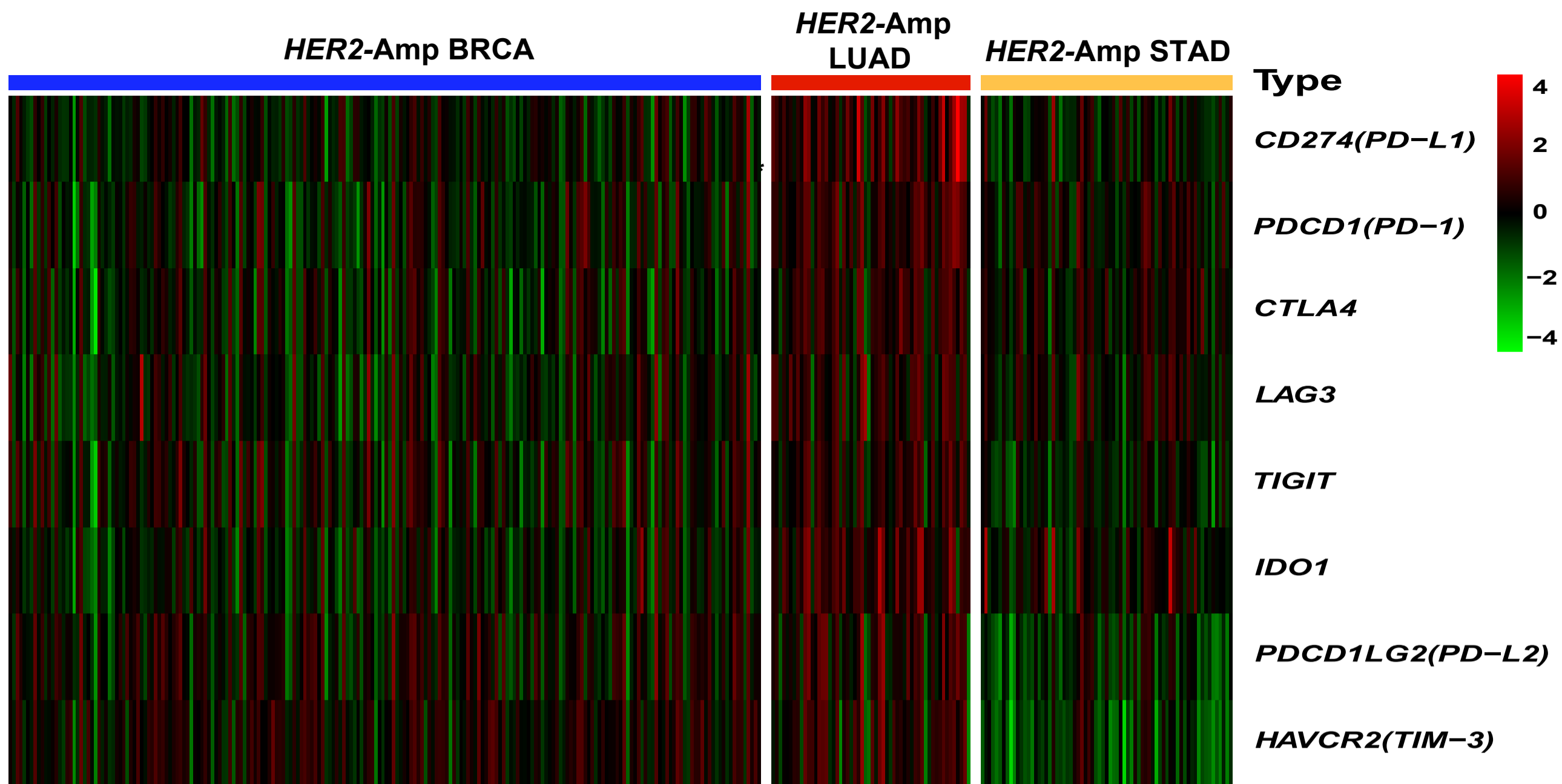
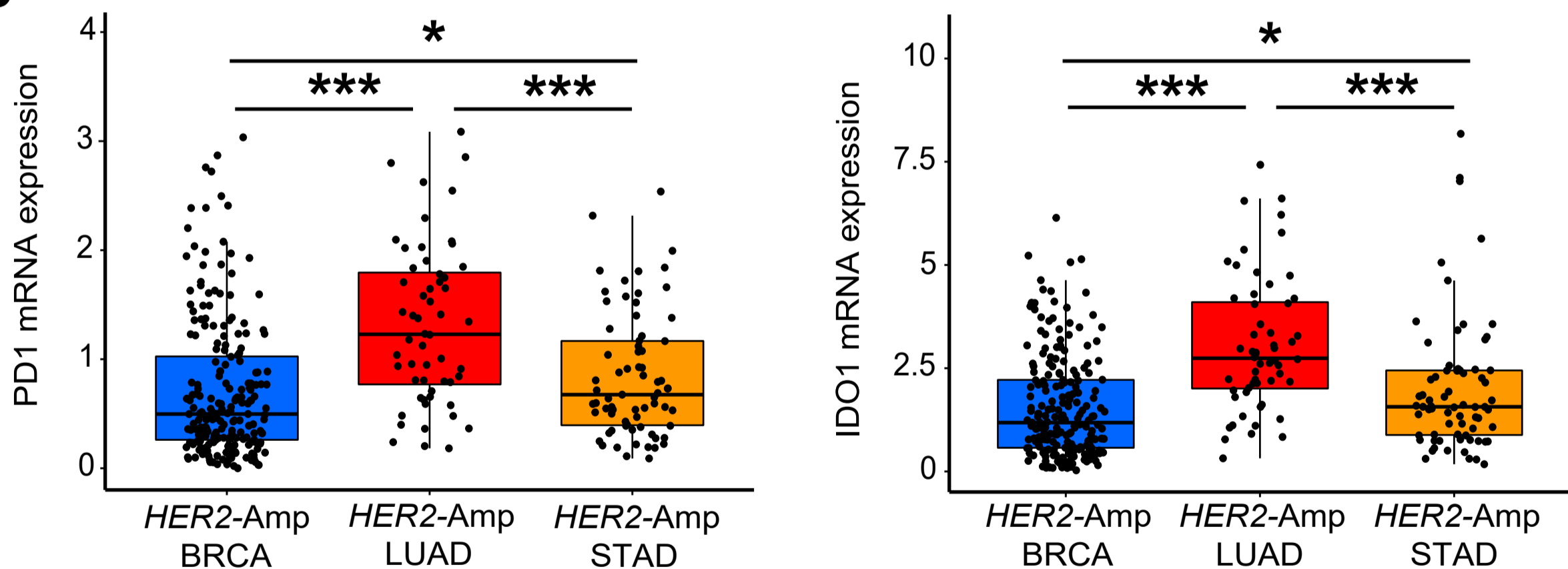


A**B**

Supplemental Figure 1. The expression of immune-related checkpoints in patients with *HER2* amplification among BRCA, LUAD and STAD. A. Heatmap representation of relative mRNA expression levels of immune-related checkpoints from TCGA-RNAseq data. B. Quantitative analysis of significantly different expression of two immune checkpoints (PD-1 and IDO1) in *HER2*-amplified cohorts. Amp, amplification; BRCA, breast invasive carcinoma; LUAD, lung adenocarcinoma; STAD, stomach adenocarcinoma; $P < 0.05$ was regarded as significantly different. *** $P < 0.001$, ** $P < 0.01$, * $P < 0.05$.