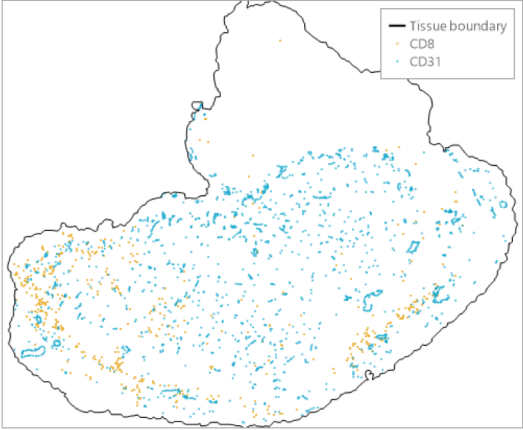


Supplementary Fig. S6

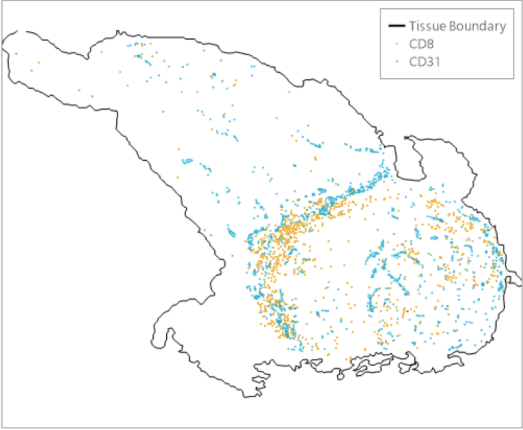
WT anti-PD-1

HALO™ Spatial Plot



PAK4 KO anti-PD-1

HALO™ Spatial Plot



Supplementary Figure 6: Spatial colocalization of CD8 and CD31 positive cells. PAK4 KO tumors treated with anti-PD-1 show a high overlap between CD8 and CD31 while WT anti-PD-1 tumors show a more diffuse CD31 distribution without CD8⁺/CD31⁺ clusters.