

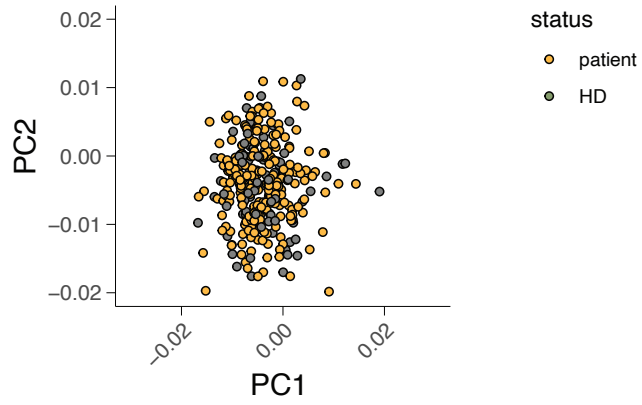


IL7 genetic variation and toxicity to immune checkpoint blockade in patients with melanoma

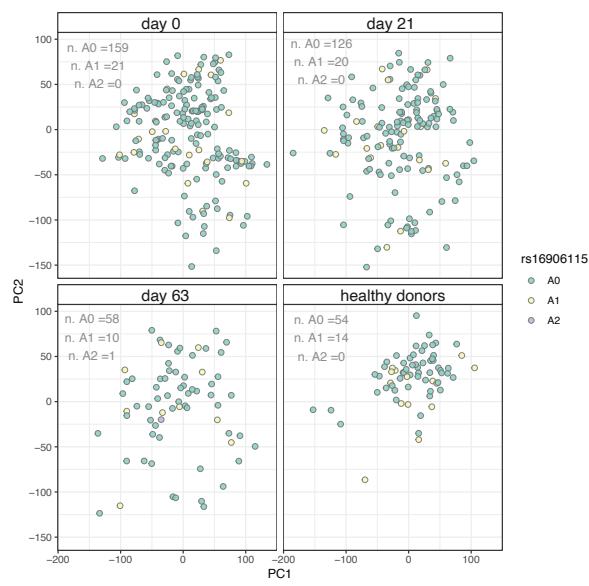
In the format provided by the authors and unedited

Supplementary Figure 1

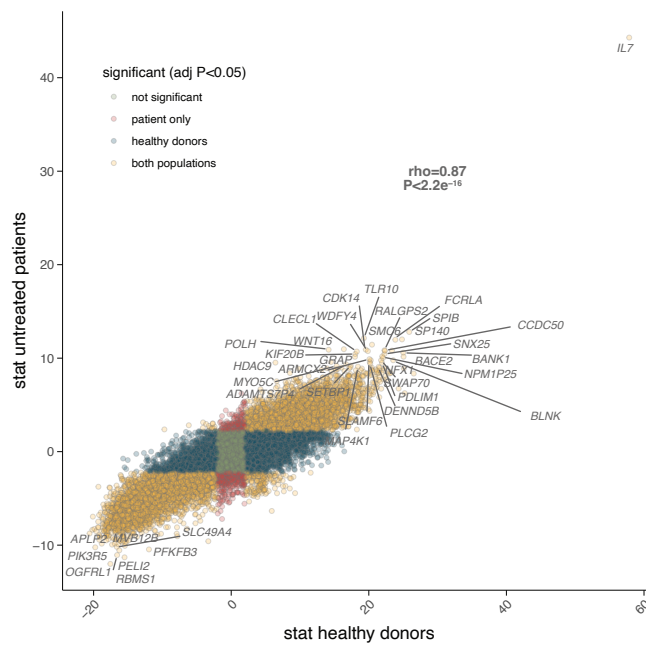
a.



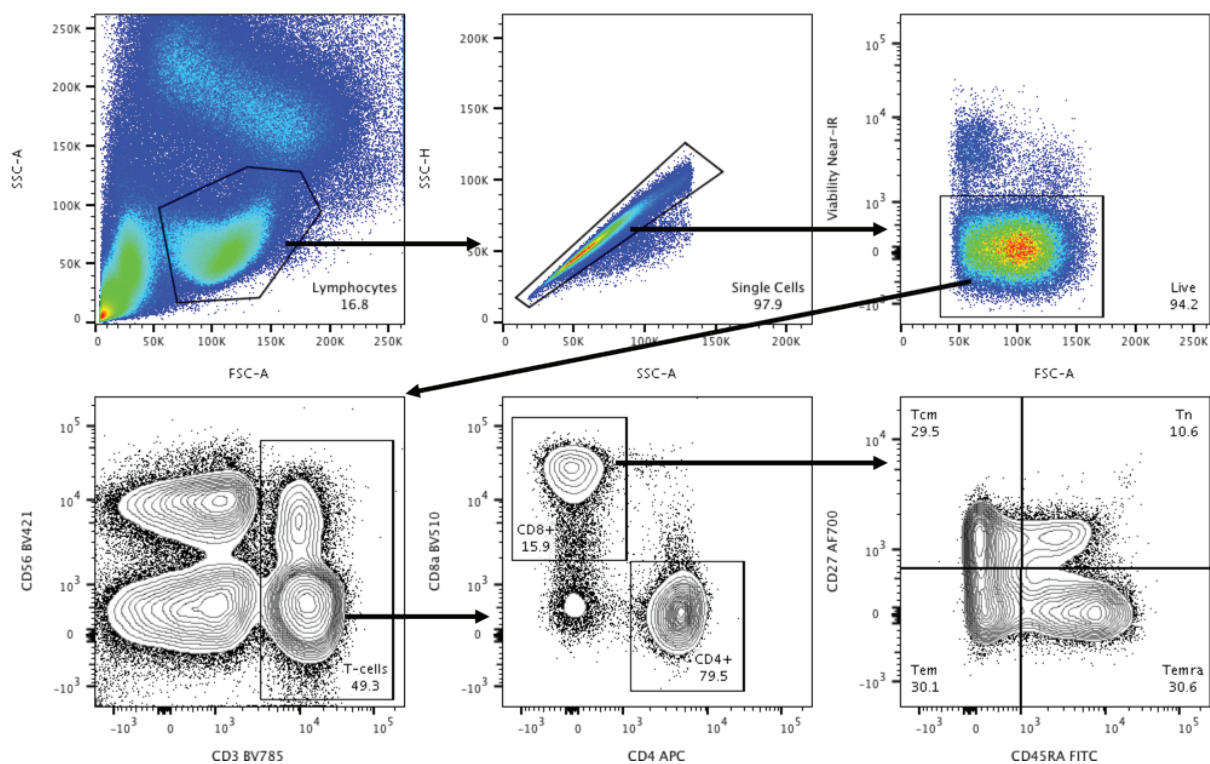
b.



c.



Supplementary Figure 2



Gating strategy to identify CD8+ T-cell subsets from whole PBMCs

| Antibody | Clone | Conjugate | Supplier |
|--|--------|-----------|-------------------------|
| LIVE/DEAD™ Fixable Near-IR Dead Cell Stain Kit | n/a | n/a | Thermofisher scientific |
| Mouse anti-human CD3 | UCHT1 | FITC | Biolegend |
| Mouse anti-human CD56 | HCD56 | FITC | Biolegend |
| Mouse anti-human CD4 | RPA-T4 | APC | Biolegend |
| Mouse anti-human CD8a | RPA-T8 | BV510 | Biolegend |
| Mouse anti-human CD45RA | HI100 | FITC | Becton Dickinson |
| Mouse anti-human CD27 | M-T271 | AF700 | Biolegend |
| Mouse anti-human CD19 | SJ25C1 | BUV395 | Becton Dickinson |
| Mouse anti-human IgD | IA6-2 | BV421 | Biolegend |
| Mouse anti-human CD16 | 3G8 | FITC | Biolegend |