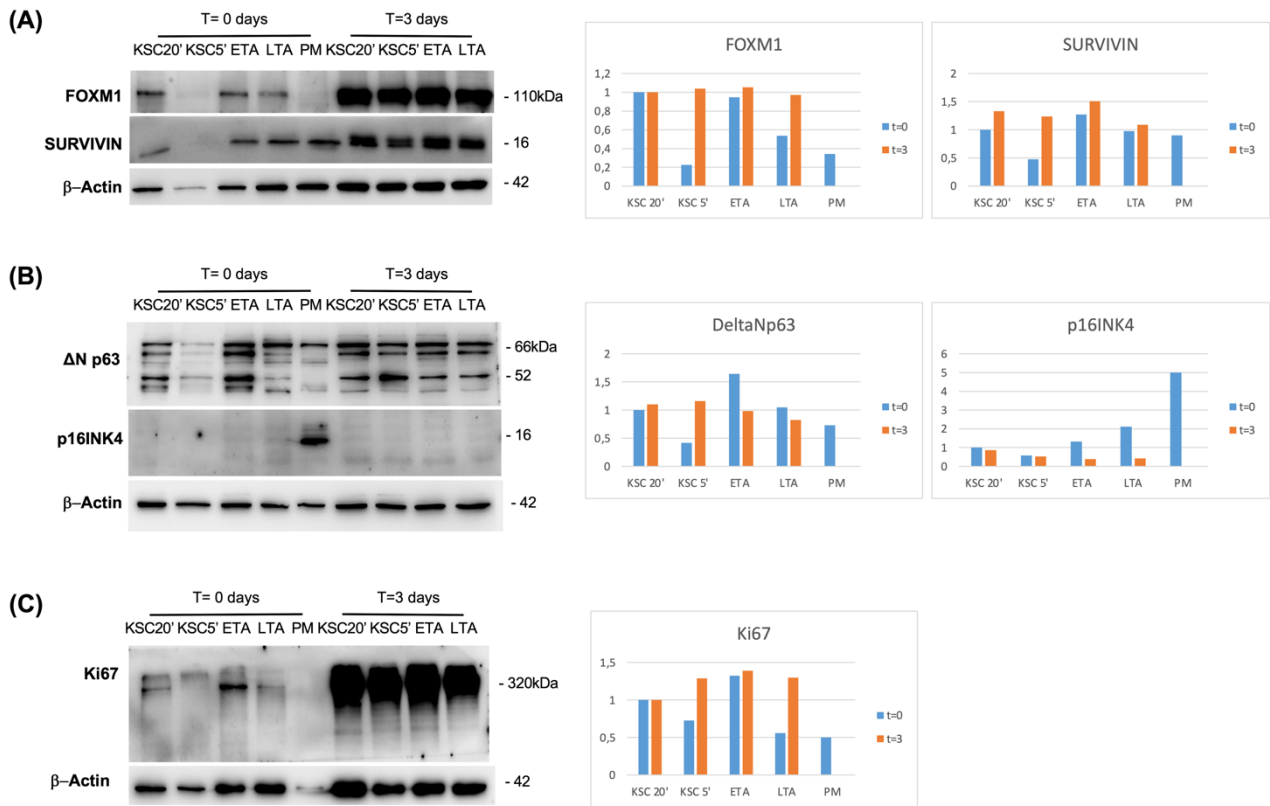


SUPPLEMENTARY MATERIAL

Supplementary Figure 1



Supplementary Figure 1. Molecular characterization of freshly isolated keratinocyte subpopulations and after 3 days of culture. Keratinocytes were isolated based on their ability to adhere to type IV collagen. Subpopulations were obtained: KSC20', KSC5', ETA, LTA, PM. Cells were lysed immediately after the subpopulation isolation (T=0 days) and after 3 days of culture (T=3 days). The expression of FOXM1, Survivin (A), Δ Np63 (Δ Np63), p16INK4 (B) and Ki67 (C) were analyzed by WB. Actin was used as internal control. Densitometric analysis per each protein was shown, evaluated by Fiji-ImageJ software.