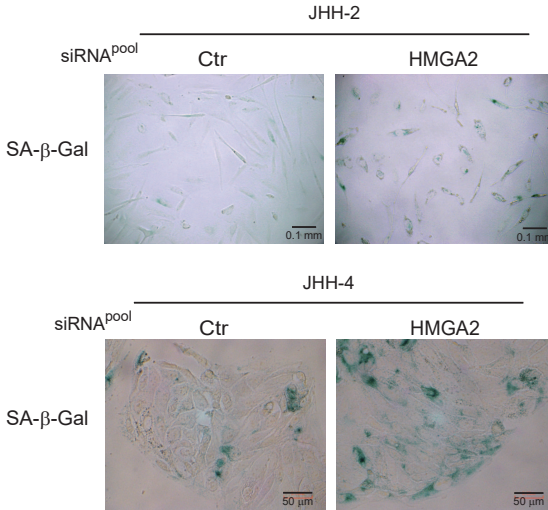
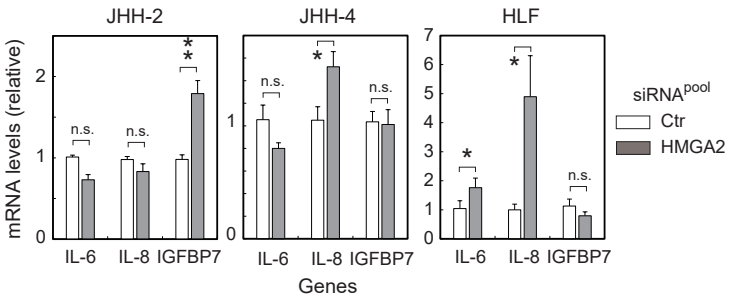


(A)



(B)

**Figure S3.**

HMGA2 knockdown induces senescence-associated phenotypes. **A**, SA-β-Gal staining was performed in JHH-2 and JHH-4 cells incubated with siRNA for one week. **B**, Cells were treated with siRNA for 3 days and qPCR was performed with the primers specific to each gene. The values are shown relative to the control (Ctr) after normalization to the corresponding values to TATA-box binding protein and represent the mean ± SD from triplicates. \*\*P < 0.005; \*P < 0.05; n.s., not significant.