

Article title: Improving Access to Surgery Through Surgical Team Mentoring – Policy Lessons From Group Model Building With Local Stakeholders in Malawi

Journal name: International Journal of Health Policy and Management (IJHPM)

Authors' information: Henk Broekhuizen^{1,2}, Martilord Ifeanyi¹, Gerald Mwapasa³, Chiara Pittalis⁴, Patrick Noah³, Nyengo Mkandawire³, Eric Borgstein³, Ruairí Brughá⁵, Jakub Gajewski⁴, Leon Bijlmakers^{1*}

¹Radboud Institute for Health Sciences, Radboud University Medical Centre, Nijmegen, The Netherlands.

²Department of Health and Society, Wageningen University and Research, Wageningen, The Netherlands.

³College of Medicine, Blantyre, Malawi.

⁴Institute of Global Surgery, Royal College of Surgeons in Ireland, Dublin, Ireland.

⁵Department of Epidemiology and Public Health Medicine, Royal College of Surgeons in Ireland, Dublin, Ireland.

(*Corresponding author: Leon.Bijlmakers@radboudumc.nl)

Supplementary file 2. Sensitivity analysis of parameter effects on total referrals (Figures A1-A5)

Figure A1: Impact of percentage_avaoided_that_conservative on refs_total

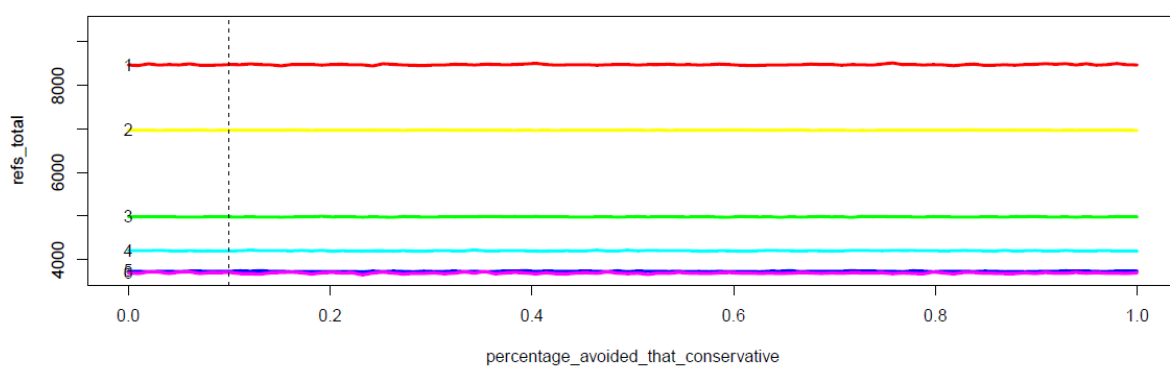
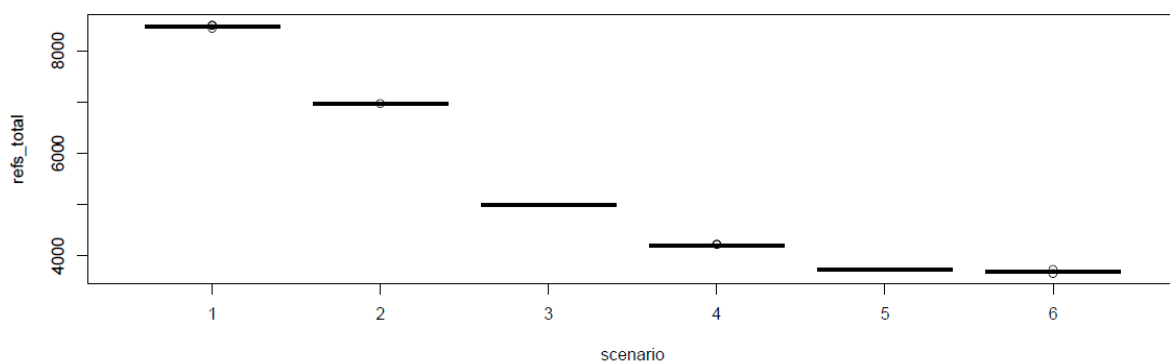


Figure A2: Impact of percentage_costs_ward on refs_total

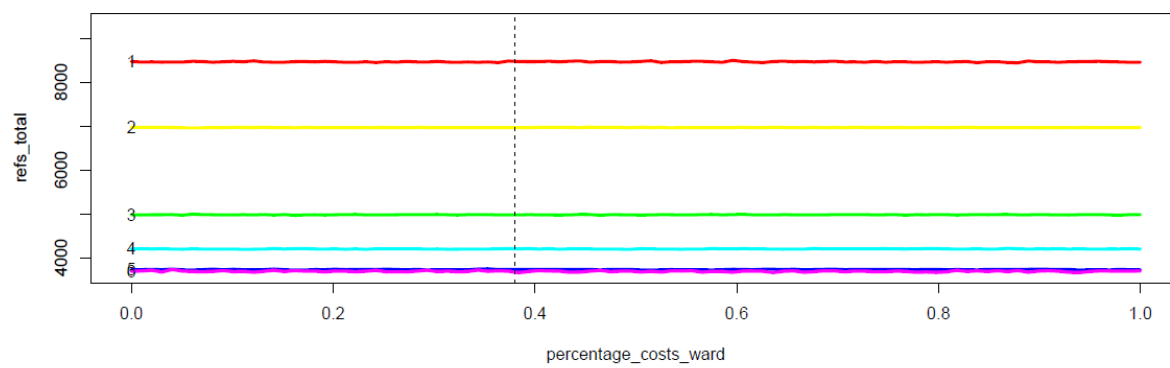
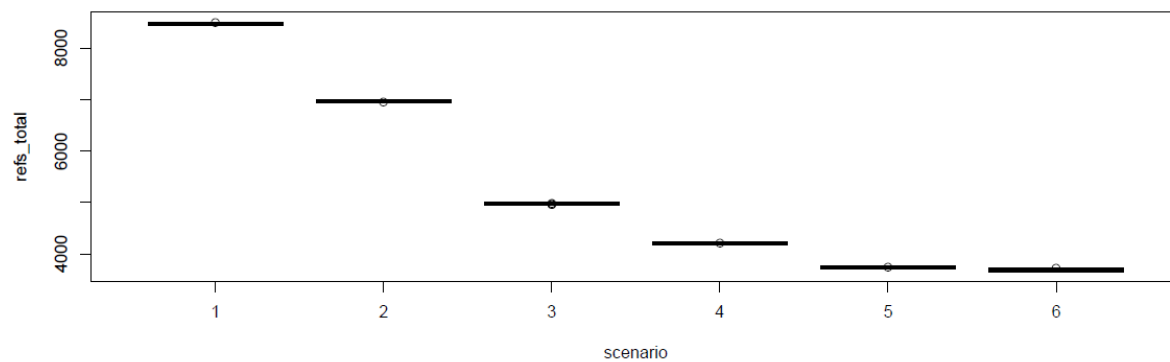


Figure A3: Impact of percentage_avoided_operated_locally on refs_total

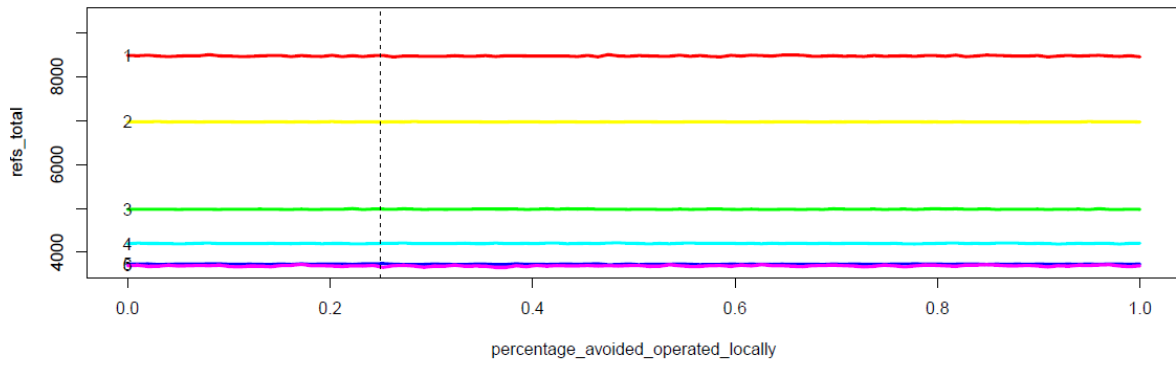
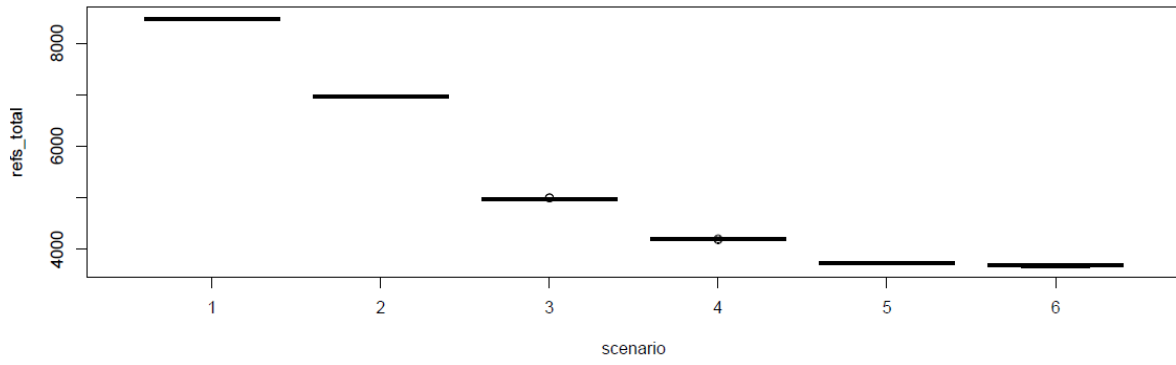


Figure A4: Impact of percentage_referrals_surgical on refs_total

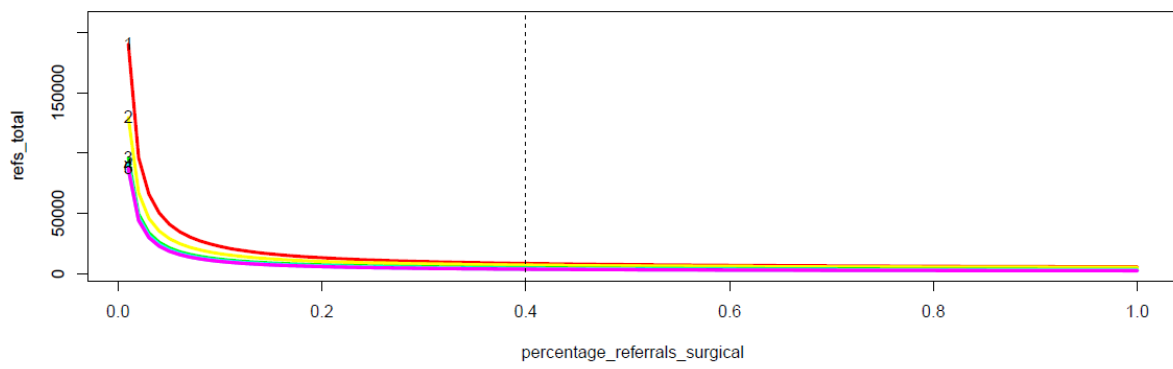
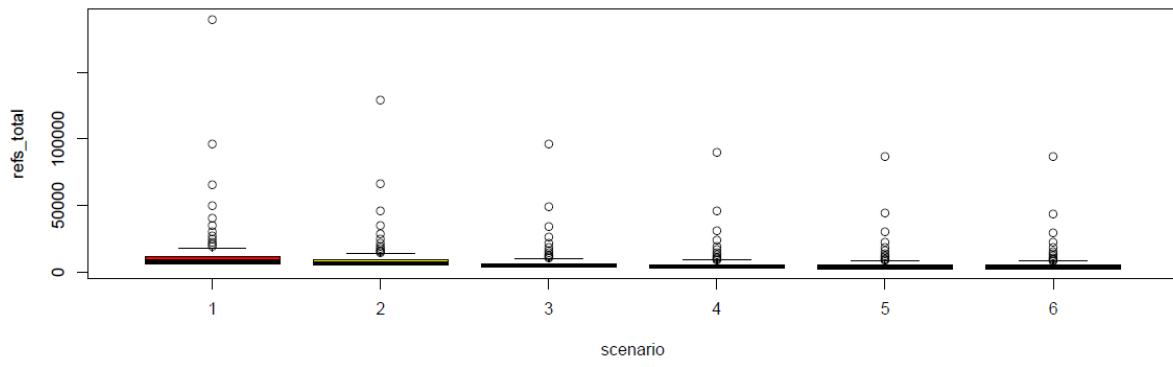


Figure A5: Impact of effectiveness_constant on refs_total

