

Supplementary file 4

Scenario analysis results

Figures S1-S6 present the results of each of the series of scenario analyses, in the form of tornado diagrams.

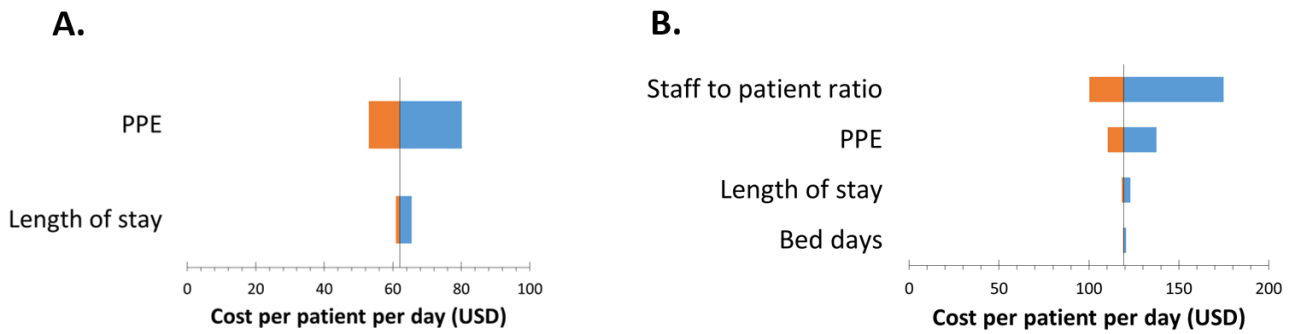


Figure S1 Scenario analysis for general wards with no oxygen - financial cost (A) and economic cost (B) per patient per day (excluding facility fee)

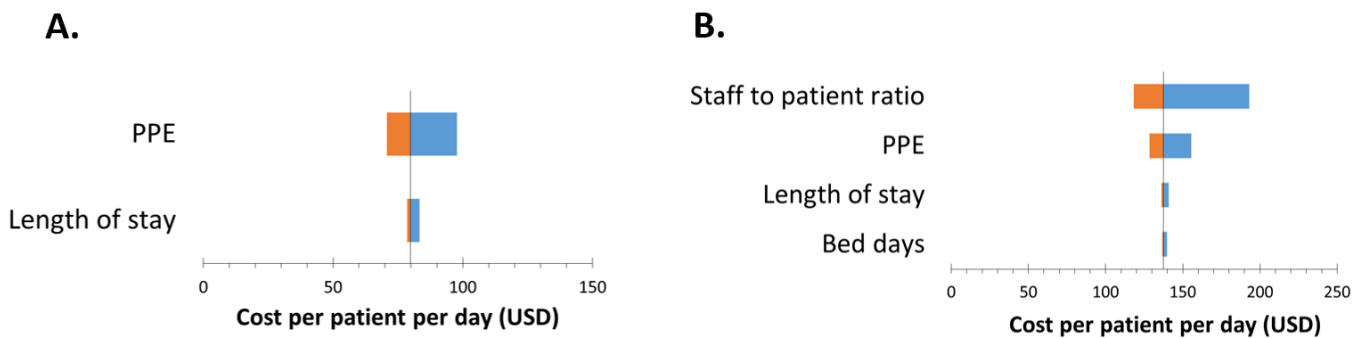


Figure S2. Scenario analysis for patients in general wards with oxygen - financial cost (A) and economic cost (B) per patient per day (excluding facility fee)

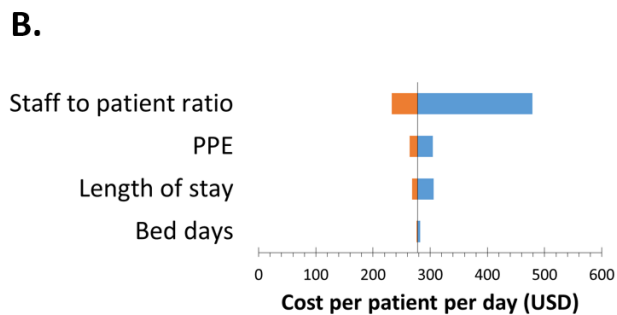
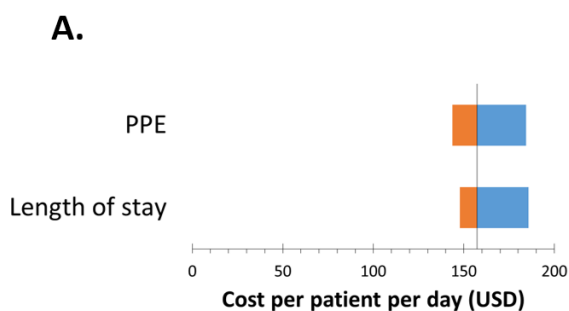


Figure S3. Scenario analysis for high care wards with high flow nasal oxygen - financial cost (A) and economic cost (B) per patient per day (excluding facility fee)

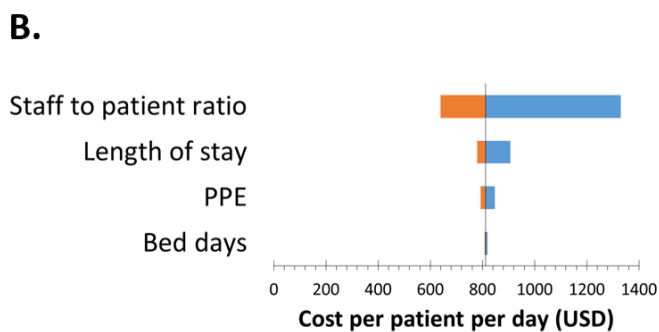
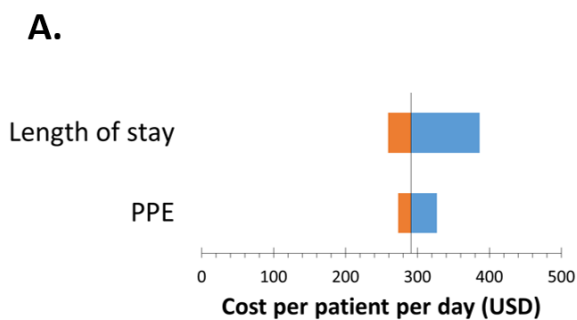


Figure S4. Scenario analysis for ICU with CPAP - financial cost (A) and economic cost (B) per patient per day (excluding facility fee)

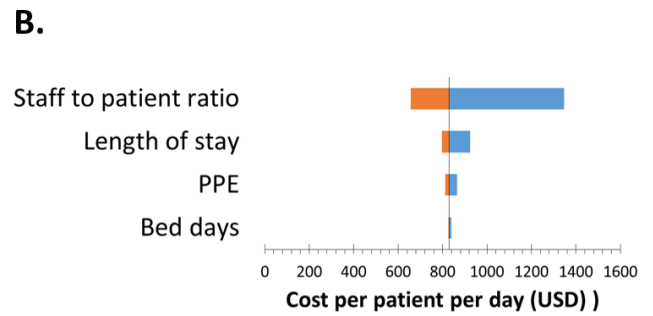
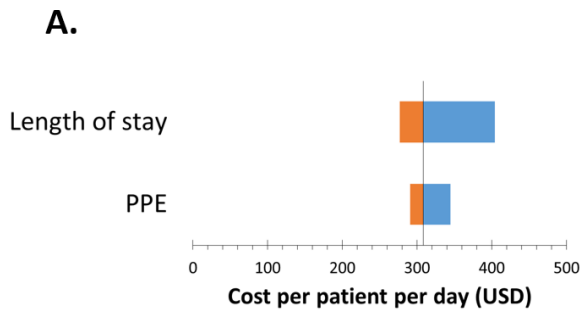


Figure S5. Scenario analysis for ICU with NIV - financial cost (A) and economic cost (B) per patient per day (excluding facility fee)

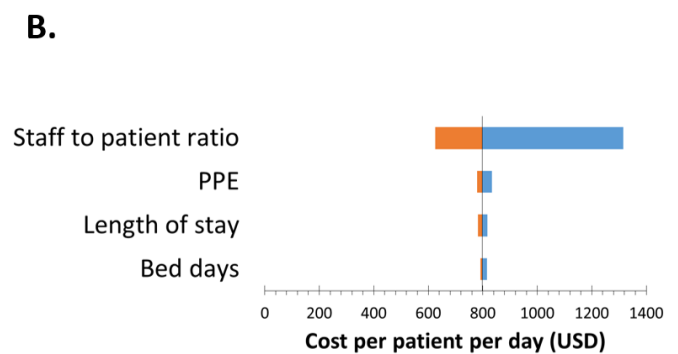
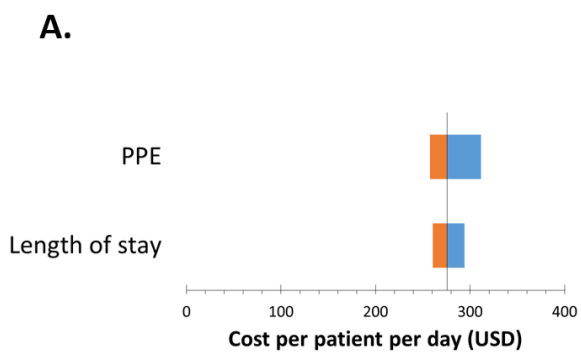


Figure S6. Scenario analysis for ICU with invasive mechanical ventilation - financial cost (A) and economic cost (B) per patient per day (excluding facility fee)