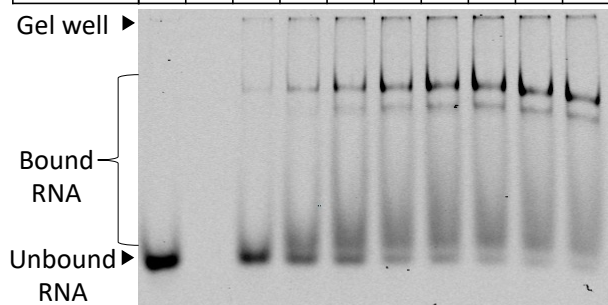


Fig. S1

A

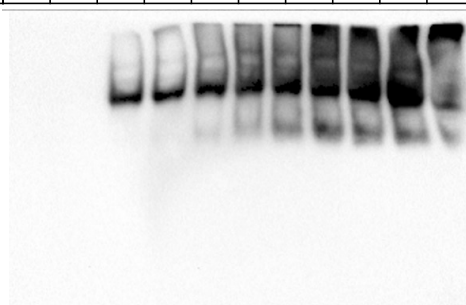
PRPF39 (nM)	-	270	270	617	964	1311	1658	2005	2352	2700
GC (nM)	10	-	10	10	10	10	10	10	10	10

PRPF39 (nM)	-	270	270	617	964	1311	1658	2005	2352	2700
GC (nM)	10	-	10	10	10	10	10	10	10	10



EMSA  
IRDye-labeled RNA (GGCCCCCGG)

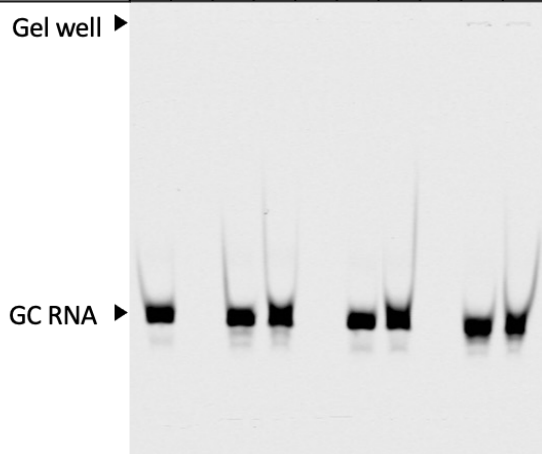
PRPF39-RNA (band 1)  
RNA released from complex (band 2)  
RNA released from complex (band 3)  
Unbound RNA (band 4)



Western Blot  
anti-PRPF39

B

Proteinase K	-	-	-	+	-	-	+	-	-	+
PRPF39	-	NTD	NTD	NTD	CTD	CTD	CTD	FL	FL	FL
GC RNA oligo	+	-	+	+	-	+	+	-	+	+



GC RNA