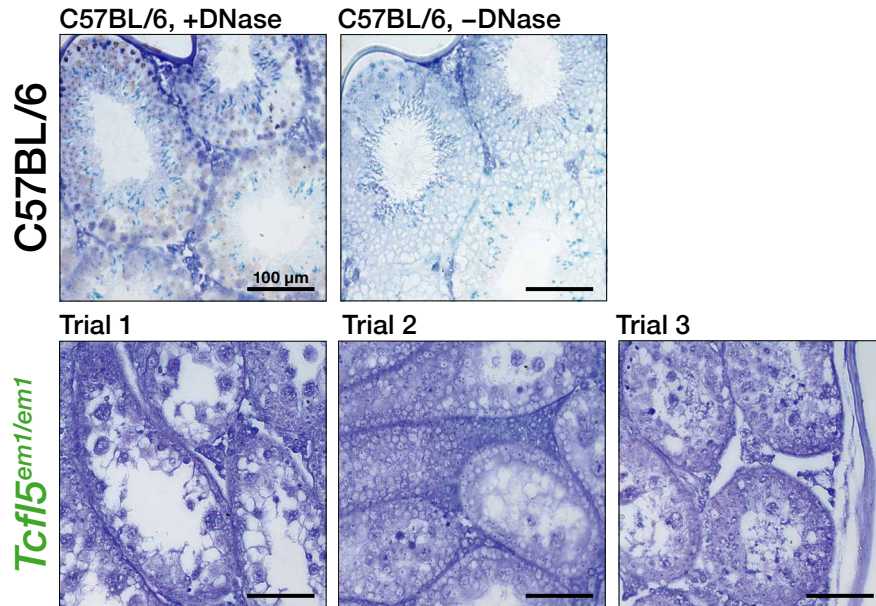
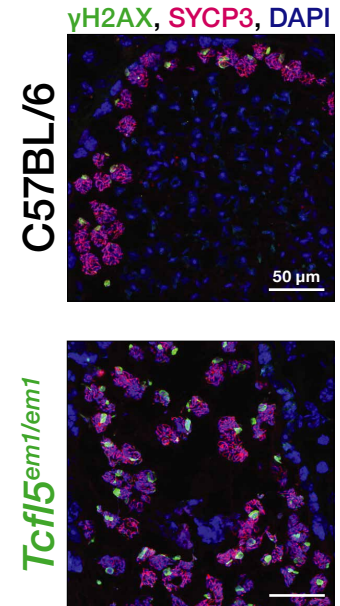


A TUNEL staining, hematoxylin

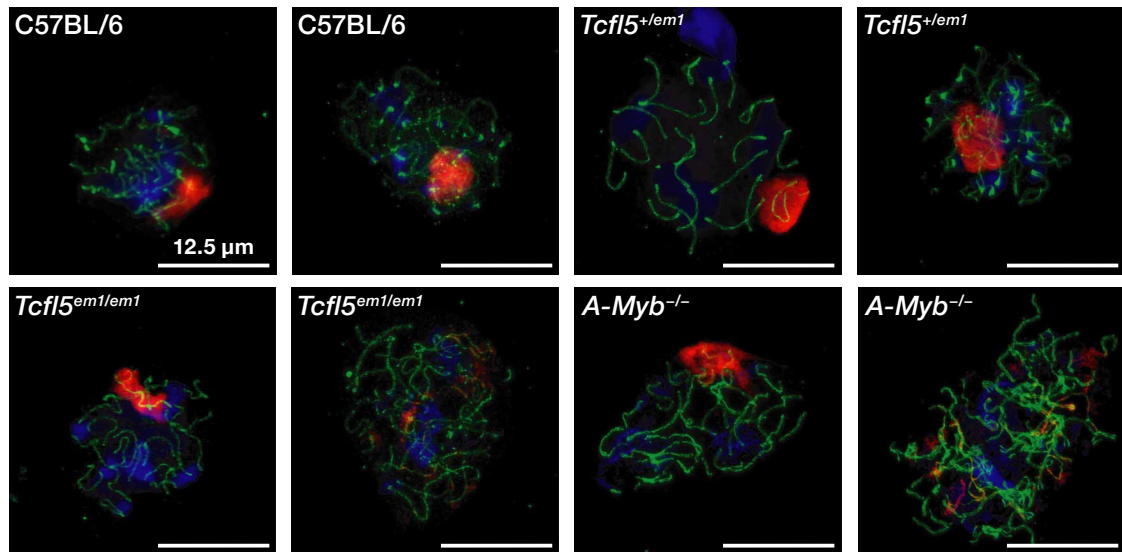


B



C

γ H2AX, SYCP3, DAPI



D

	Cells with γ H2AX on sex body only	Cells with γ H2AX on both autosomes and sex body	Cells with γ H2AX but no sex body	N
C57BL/6	132 (97%)	4 (3%)	0	136
<i>Tcf15^{+/em1}</i>	102 (85%)	13 (11%)	5 (4%)	120
<i>Tcf15^{em1/em1}</i>	65 (59%)	41 (37%)	4 (4%)	110
<i>A-Myb^{-/-}</i>	73 (60%)	32 (26%)	17 (14%)	122