

Figure 1C WT Captured by LAS 4000 Imager

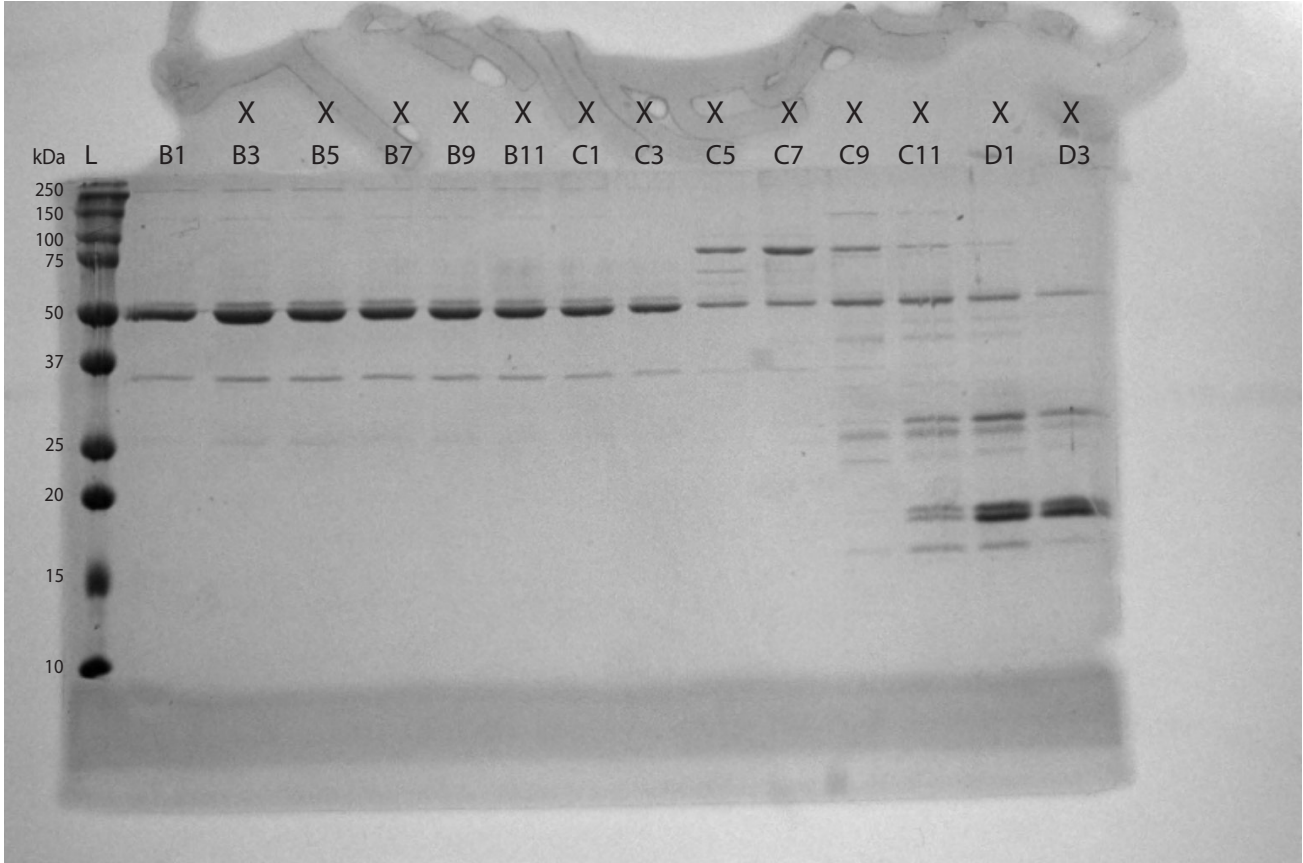


Figure 3C WT Captured by InGenius3

X

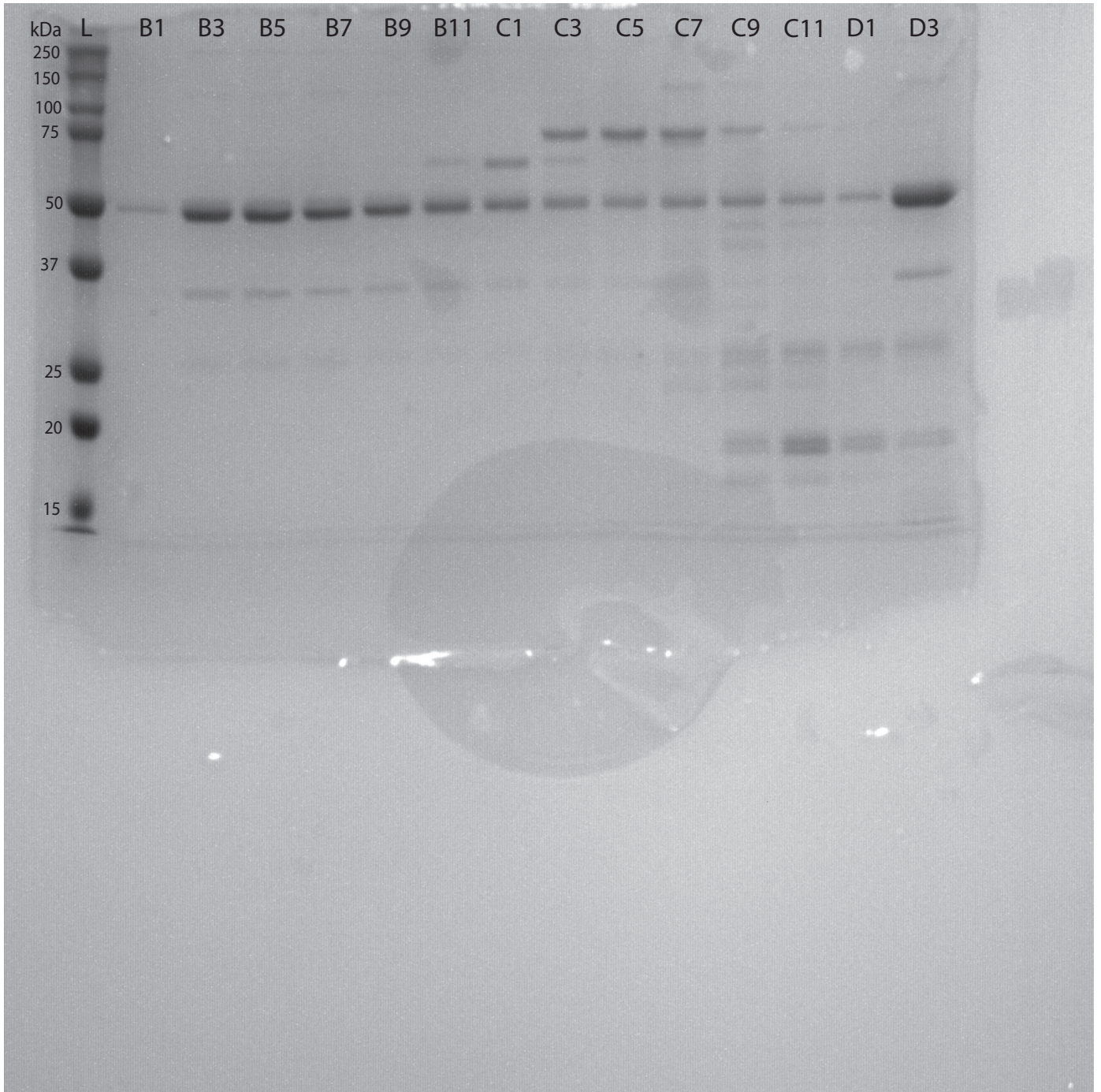




Figure 3C E149R-N150A Captured by InGenius3

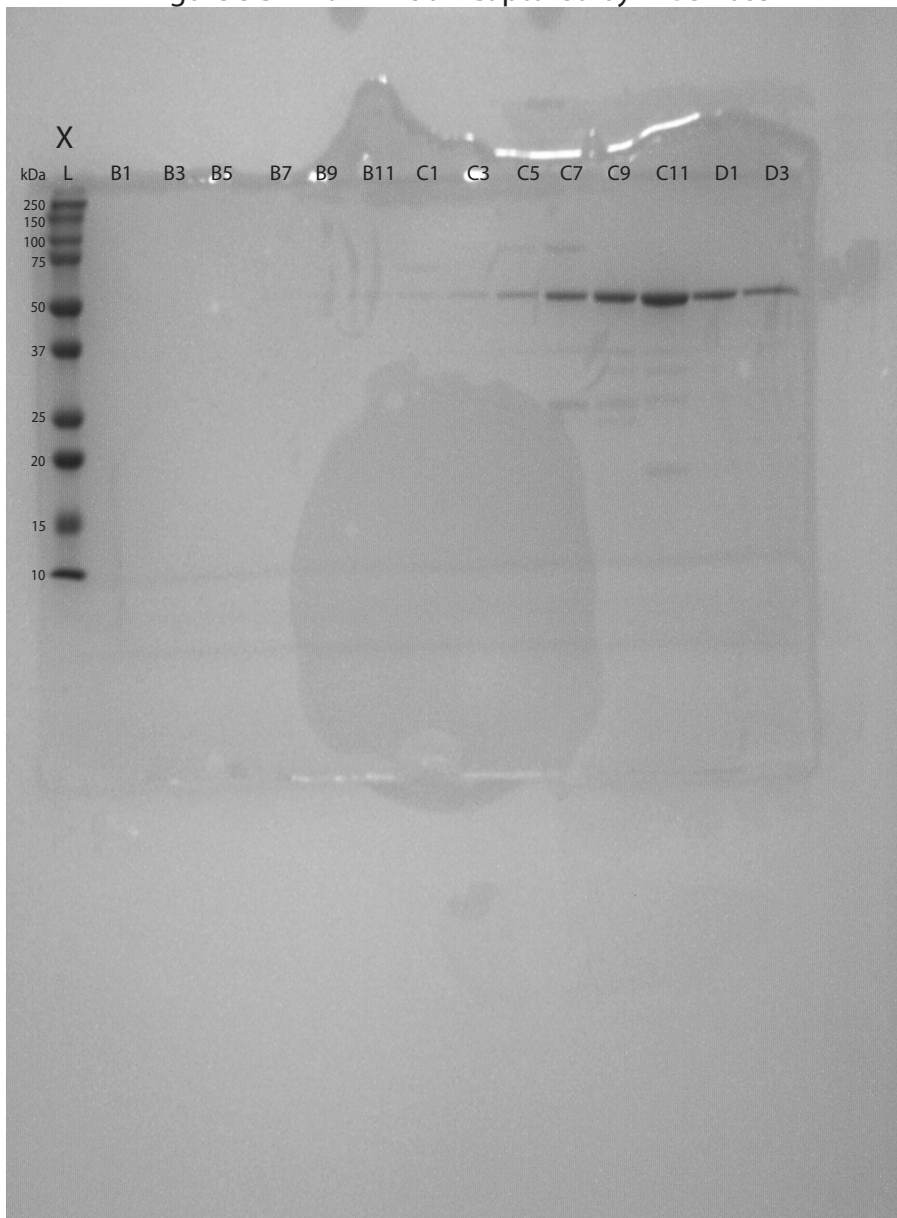
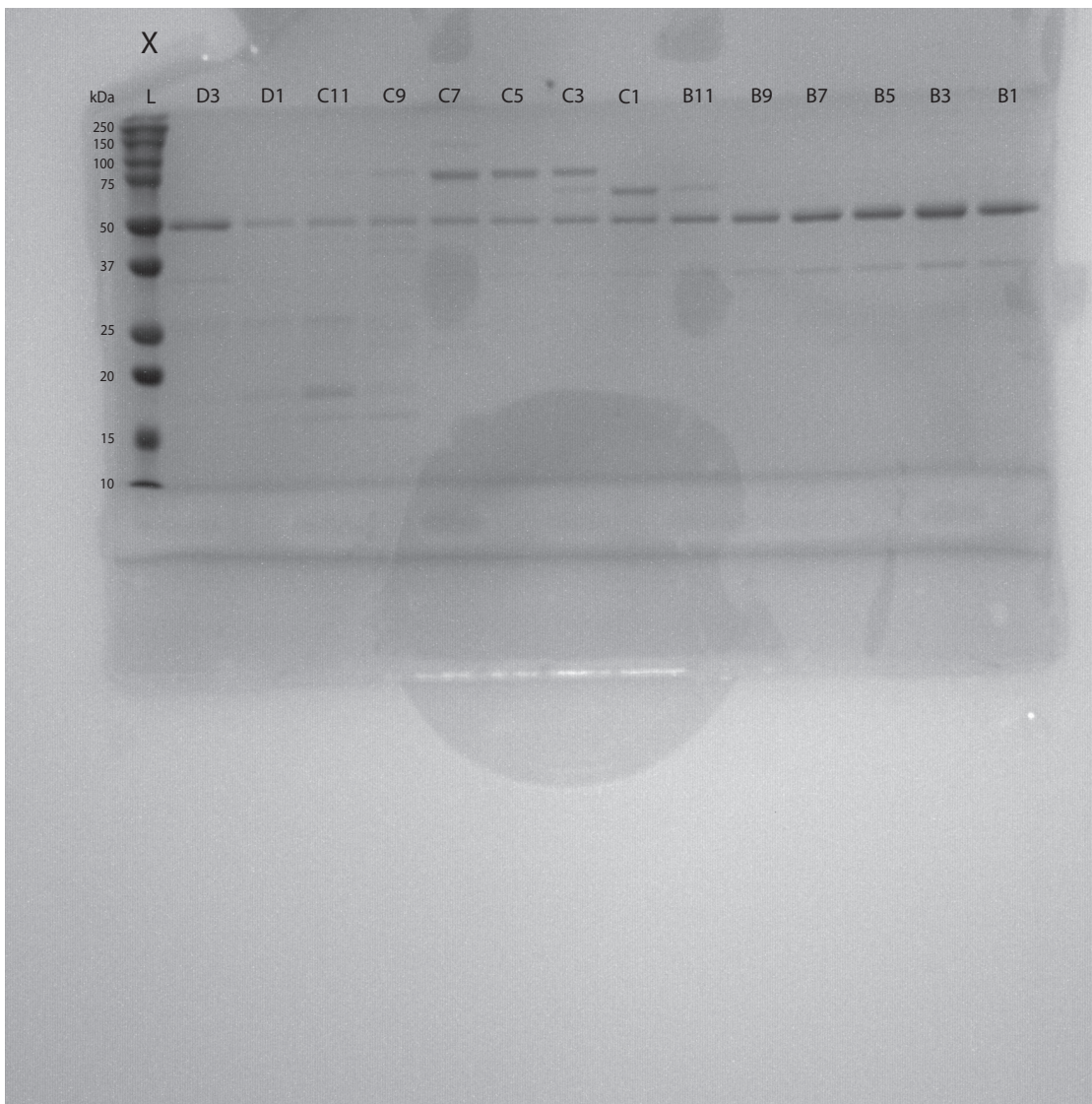


Figure 3C N364A-E365A Captured by InGenius3



Note: gel image was flipped horizontally in Figure 3C of the manuscript to stay consistent with the order of fractions and gels for all structural/interface mutants. The order the gel was loaded was fractions B1-D3 and then the standard protein ladder was added in the 15th well versus the 1st well.



Figure 3C I368A-N379A-R371E Captured by InGenius3

X

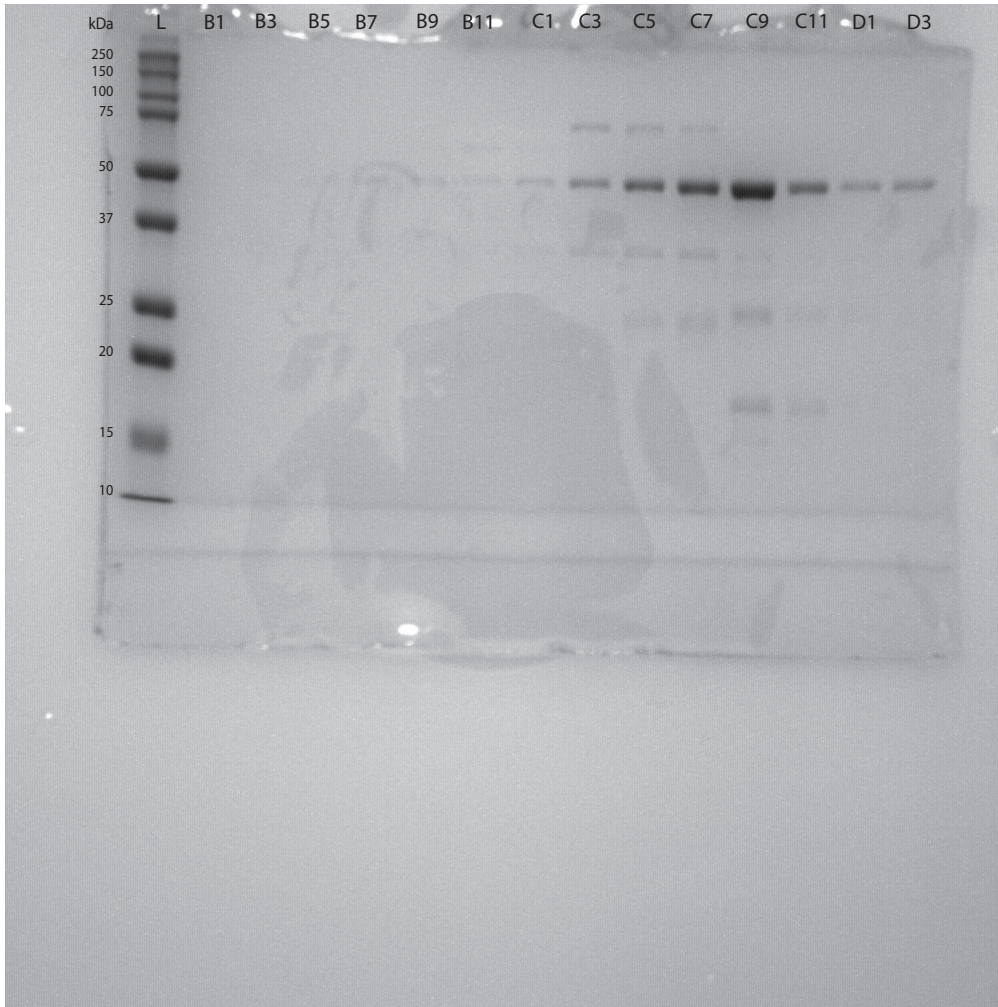


Figure 4D WT Captured by InGenius3

X

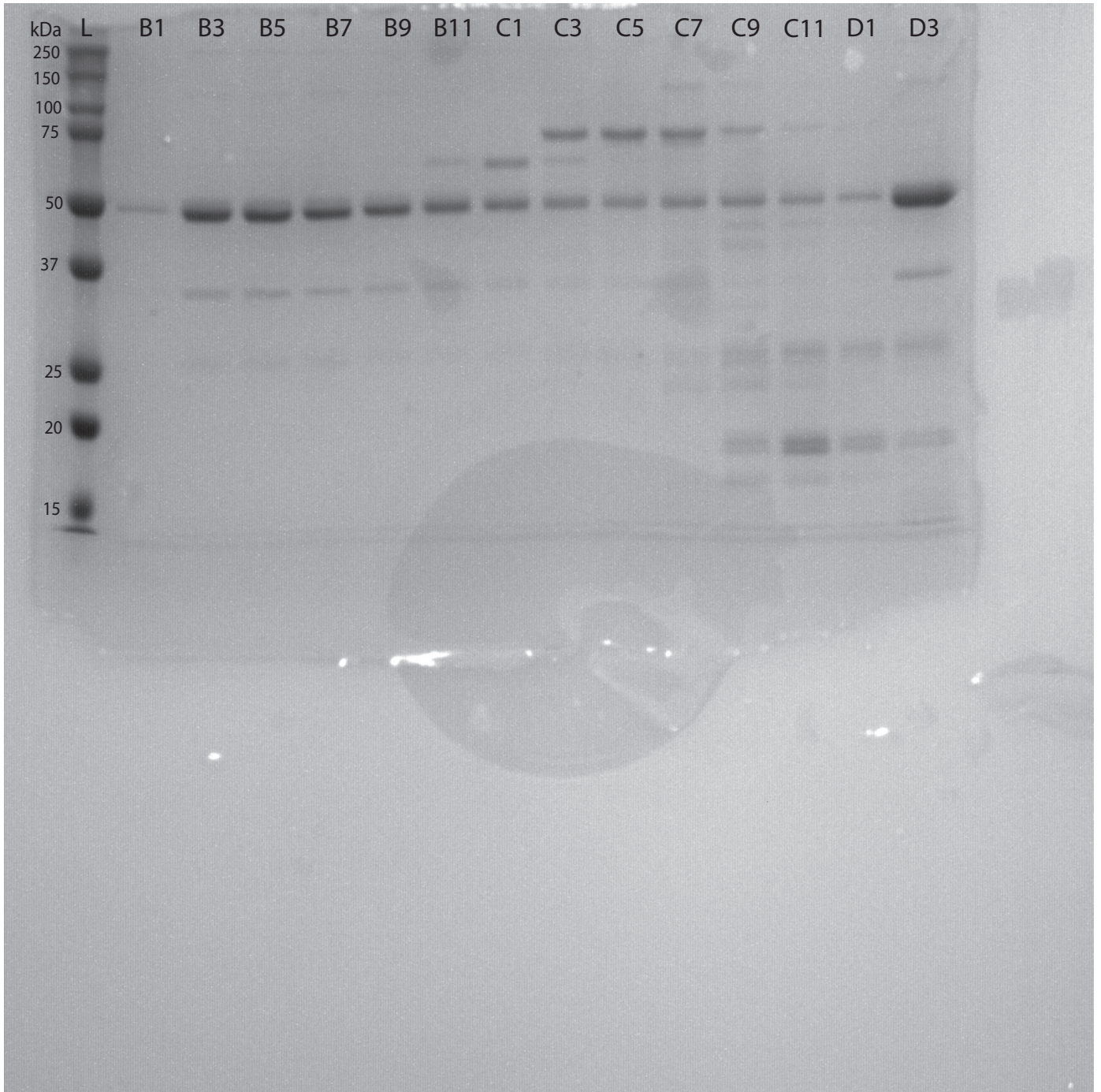




Figure 4D R117E Captured by InGenius3

X

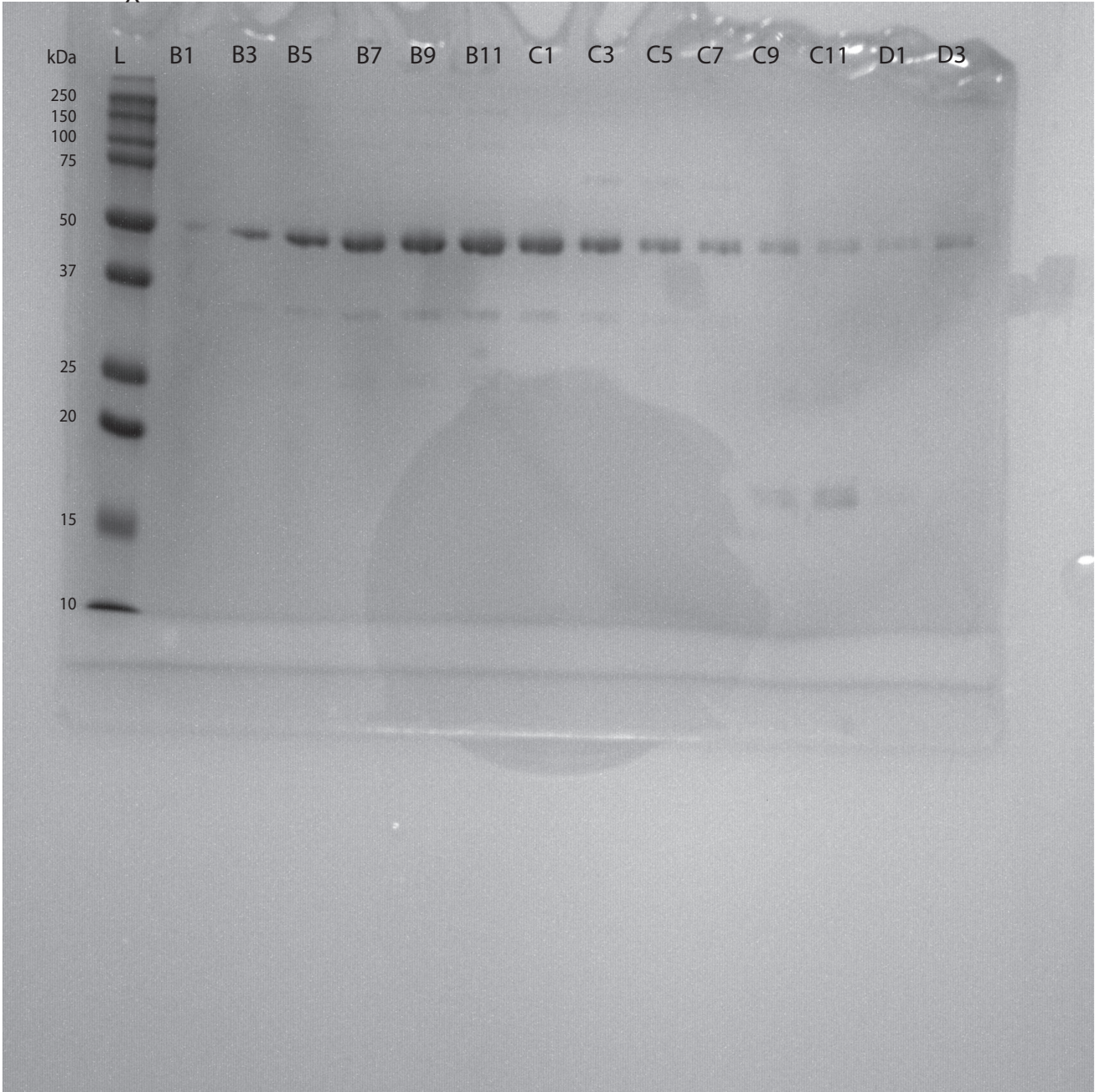


Figure 4D R151E Captured by InGenius3

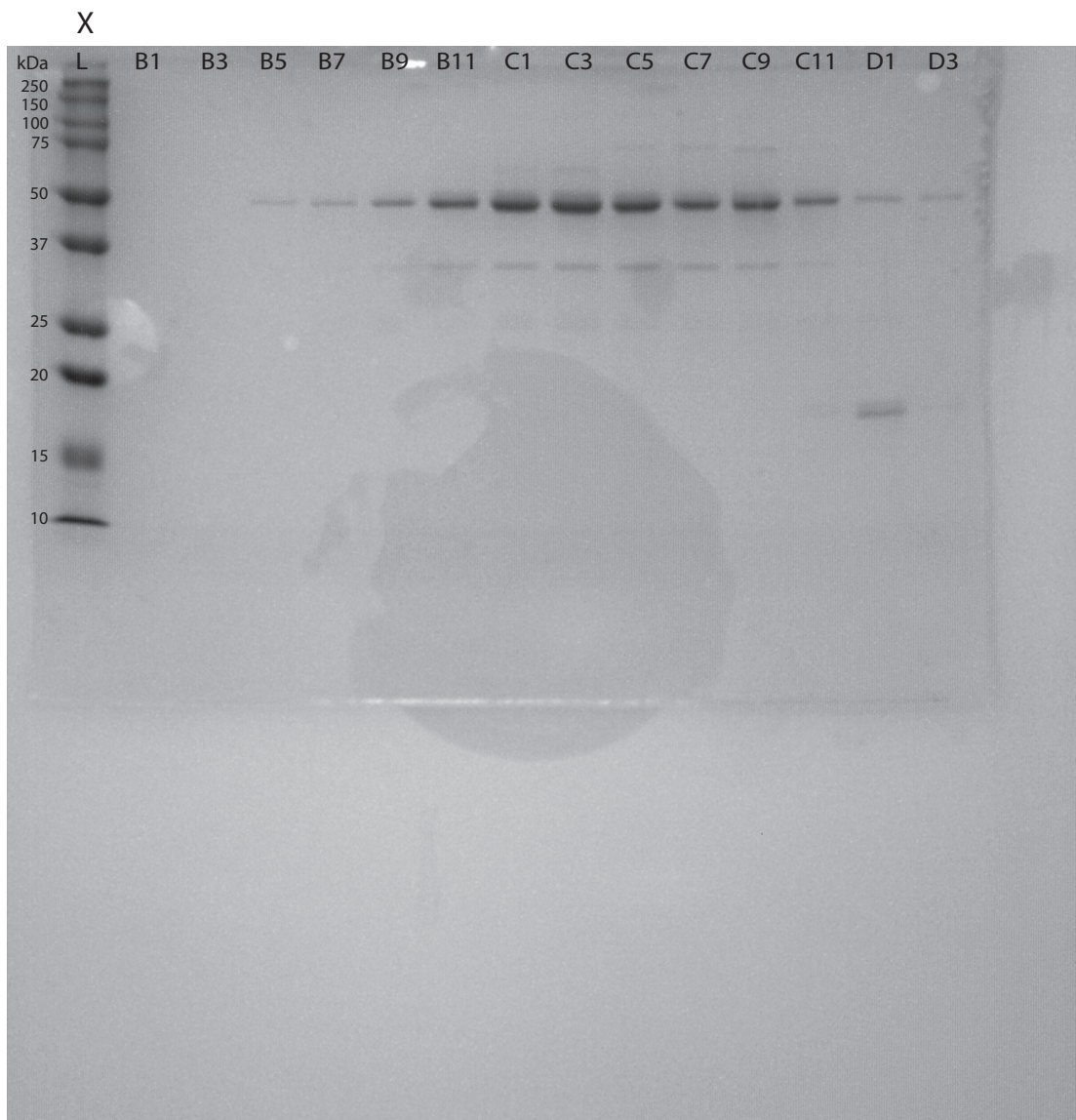




Figure 4D H352E Captured by InGenius3

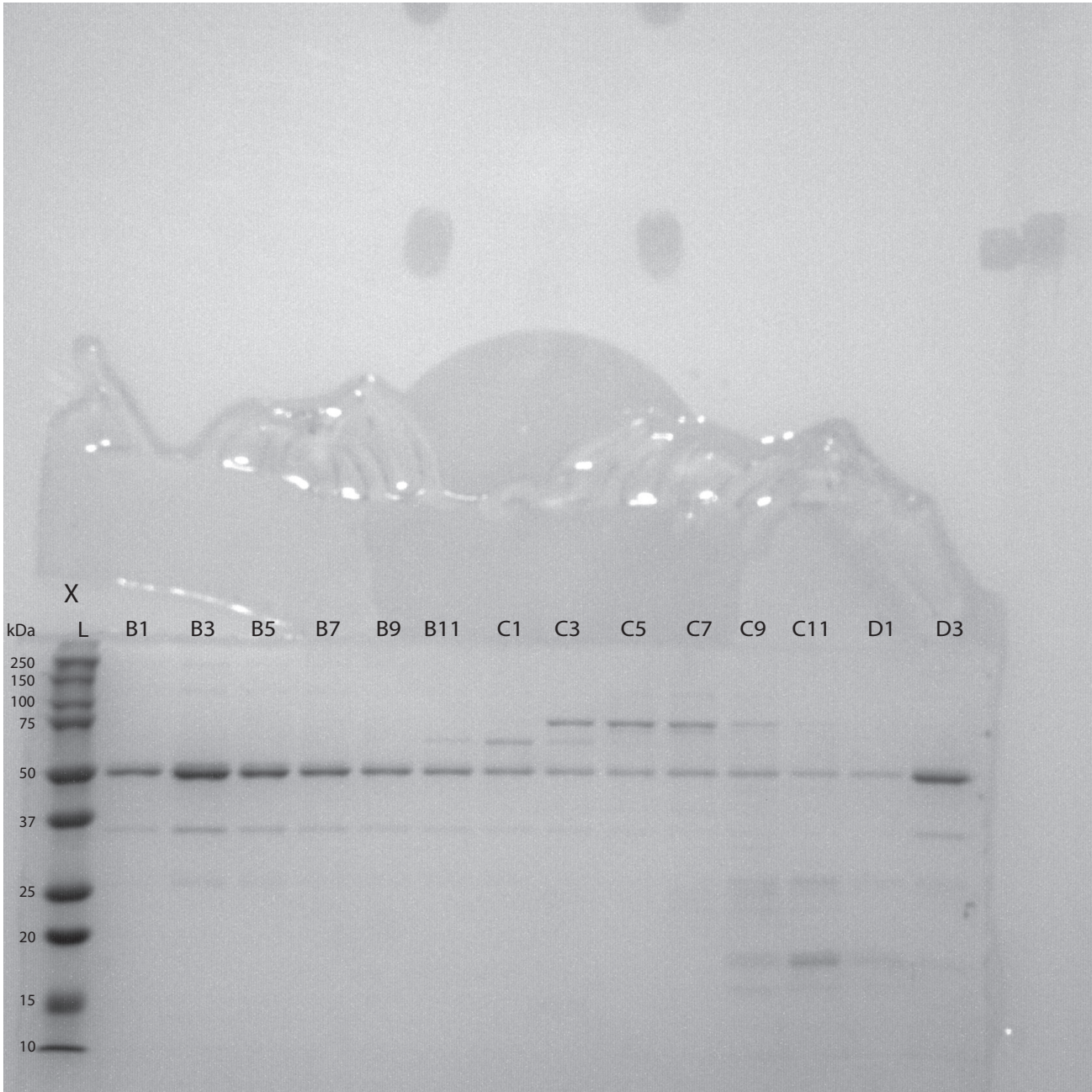


Figure 4D D355K Captured by InGenius3

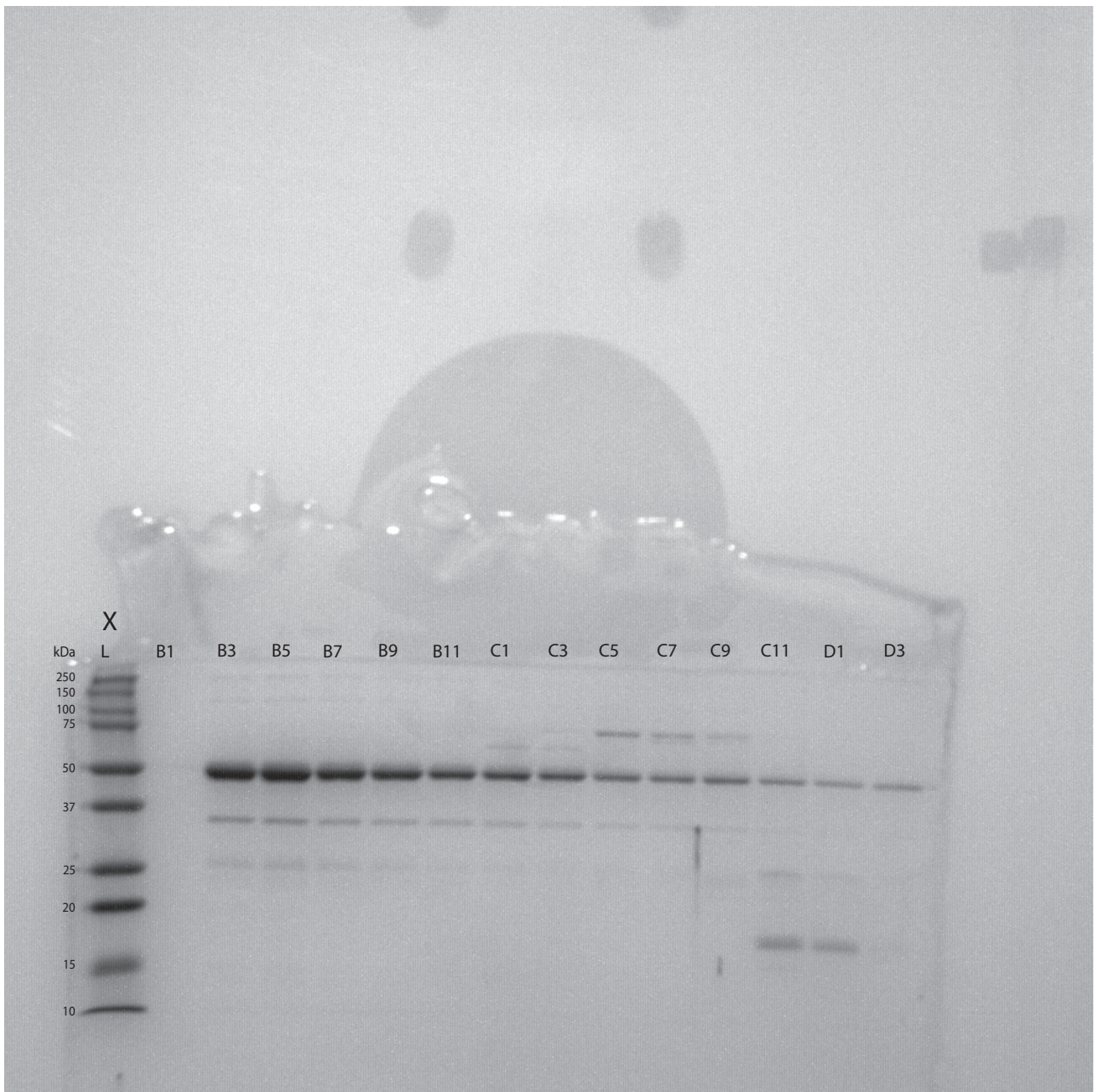




Figure 4D Y377K Captured by InGenius3

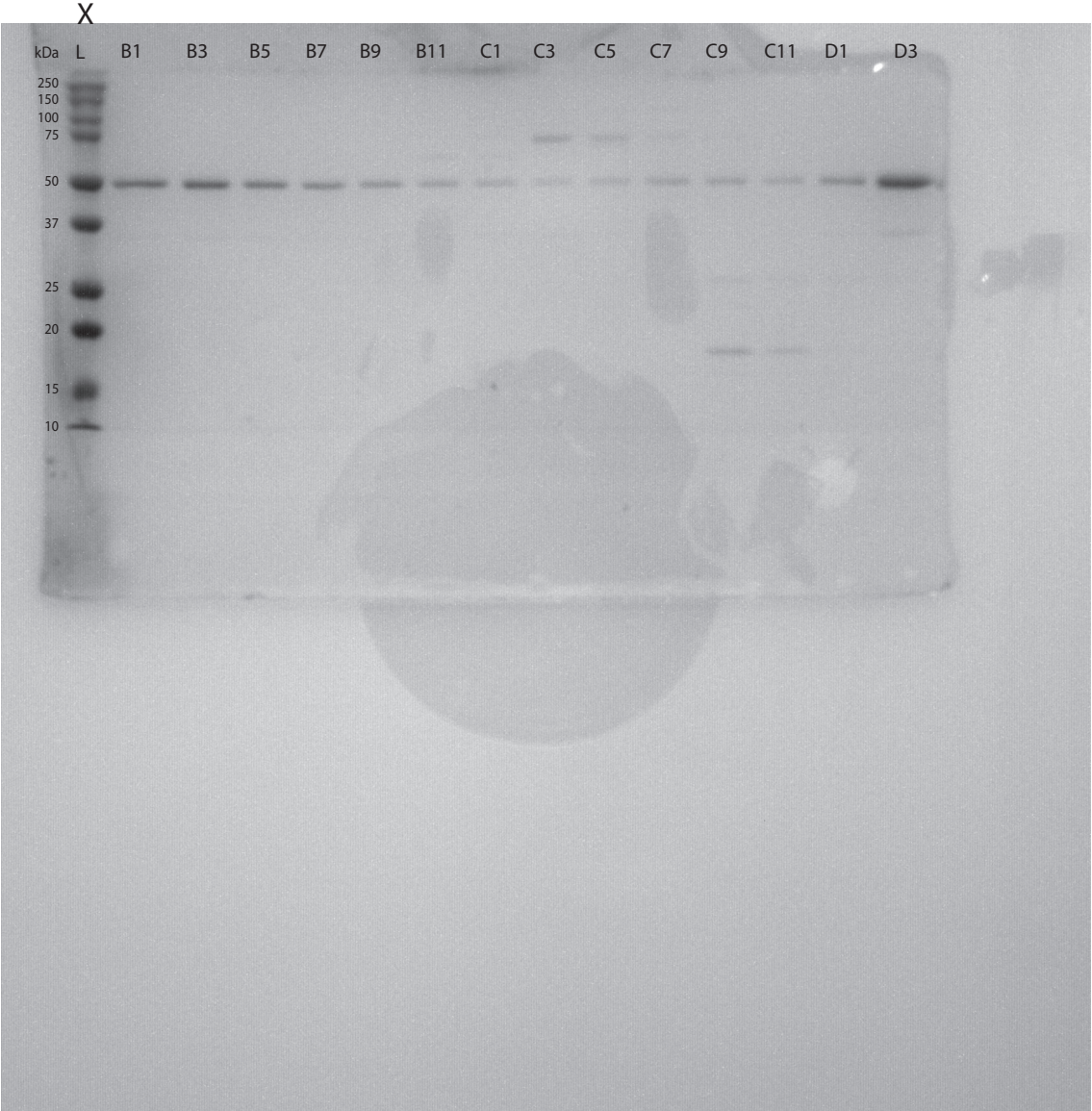


Figure 4D  $\Delta$ K470-Q479 Captured by InGenius3

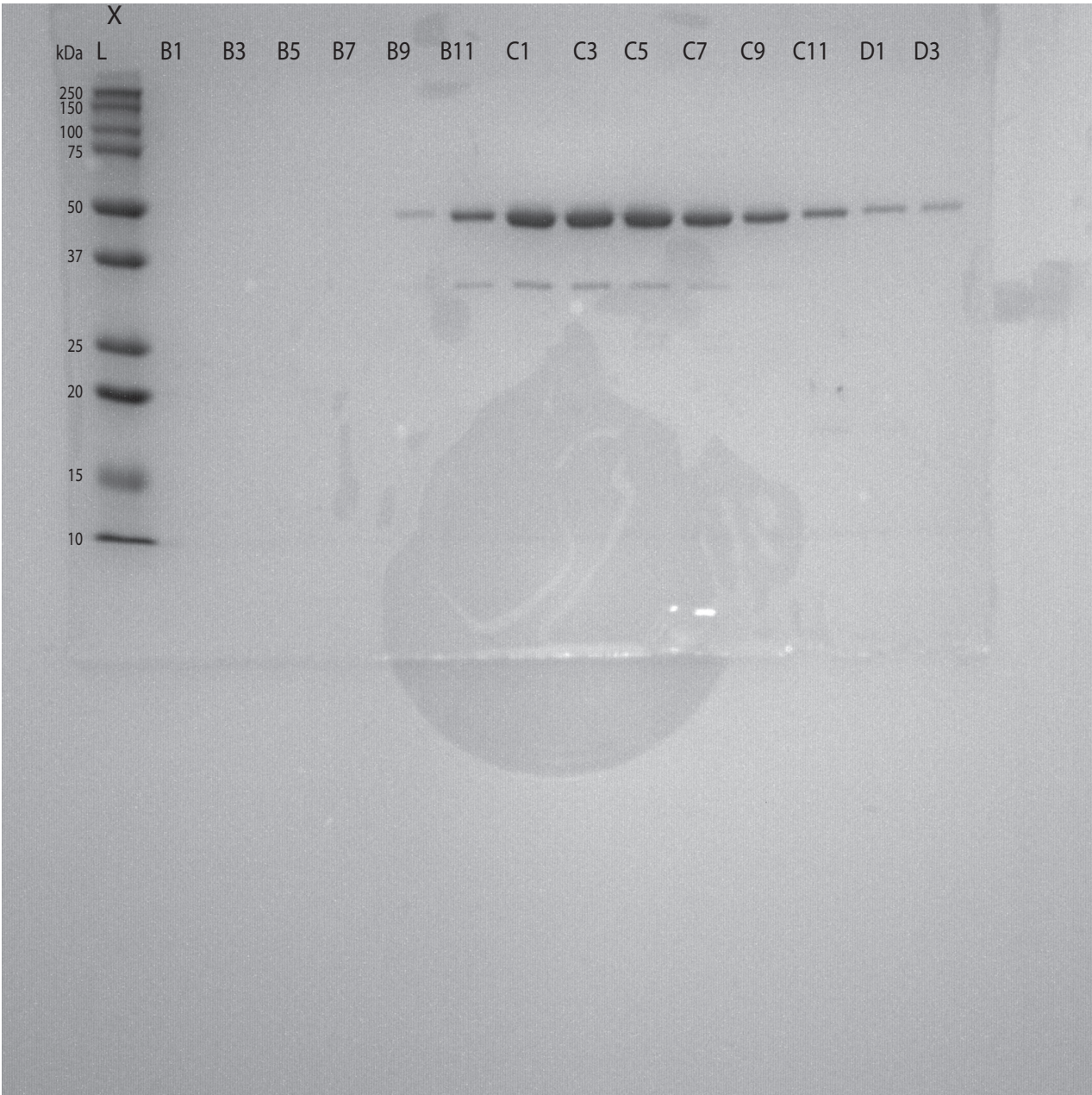




Figure 4D G474Y Captured by InGenius3

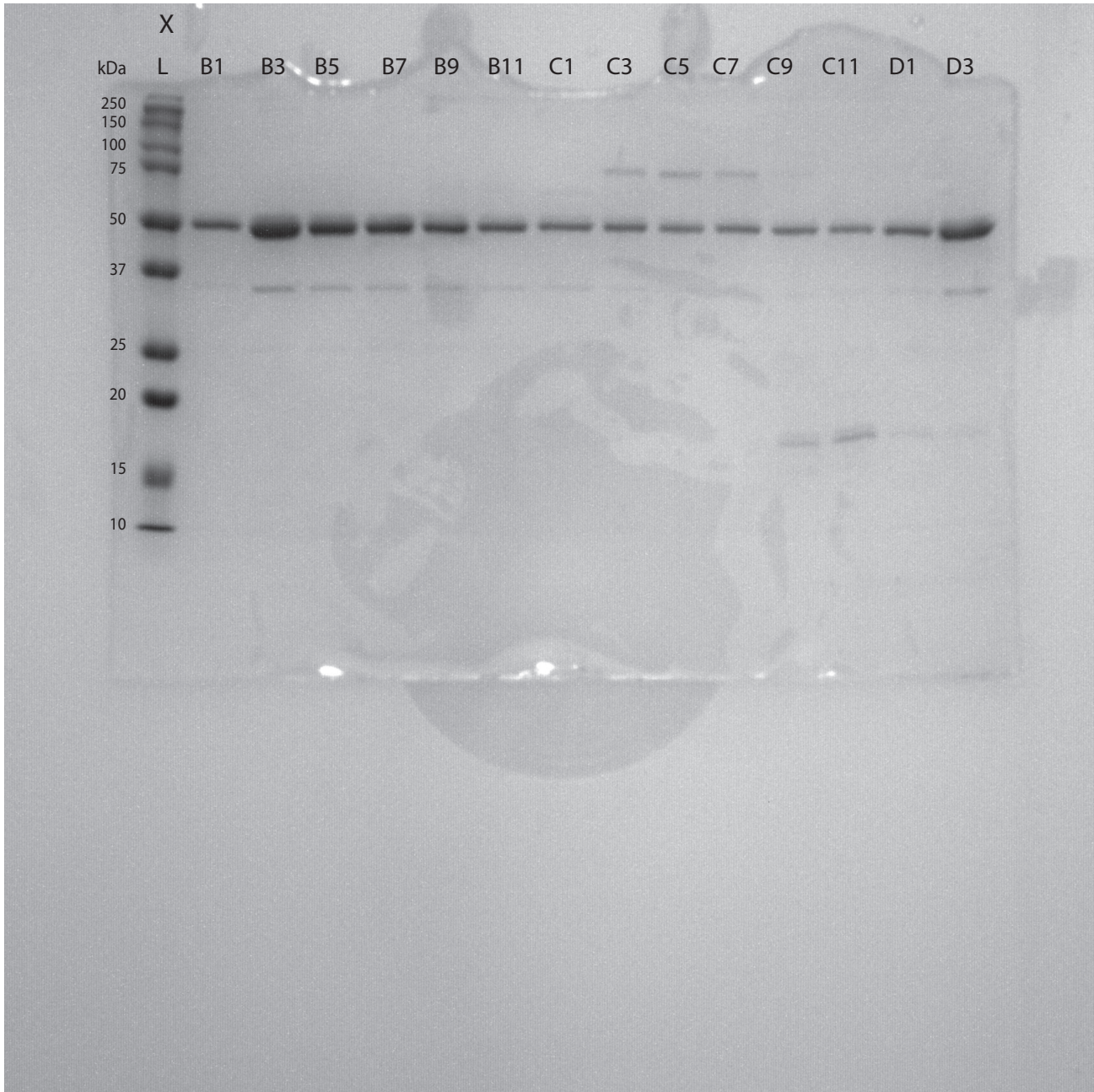


Figure 4D R477E Captured by InGenius3

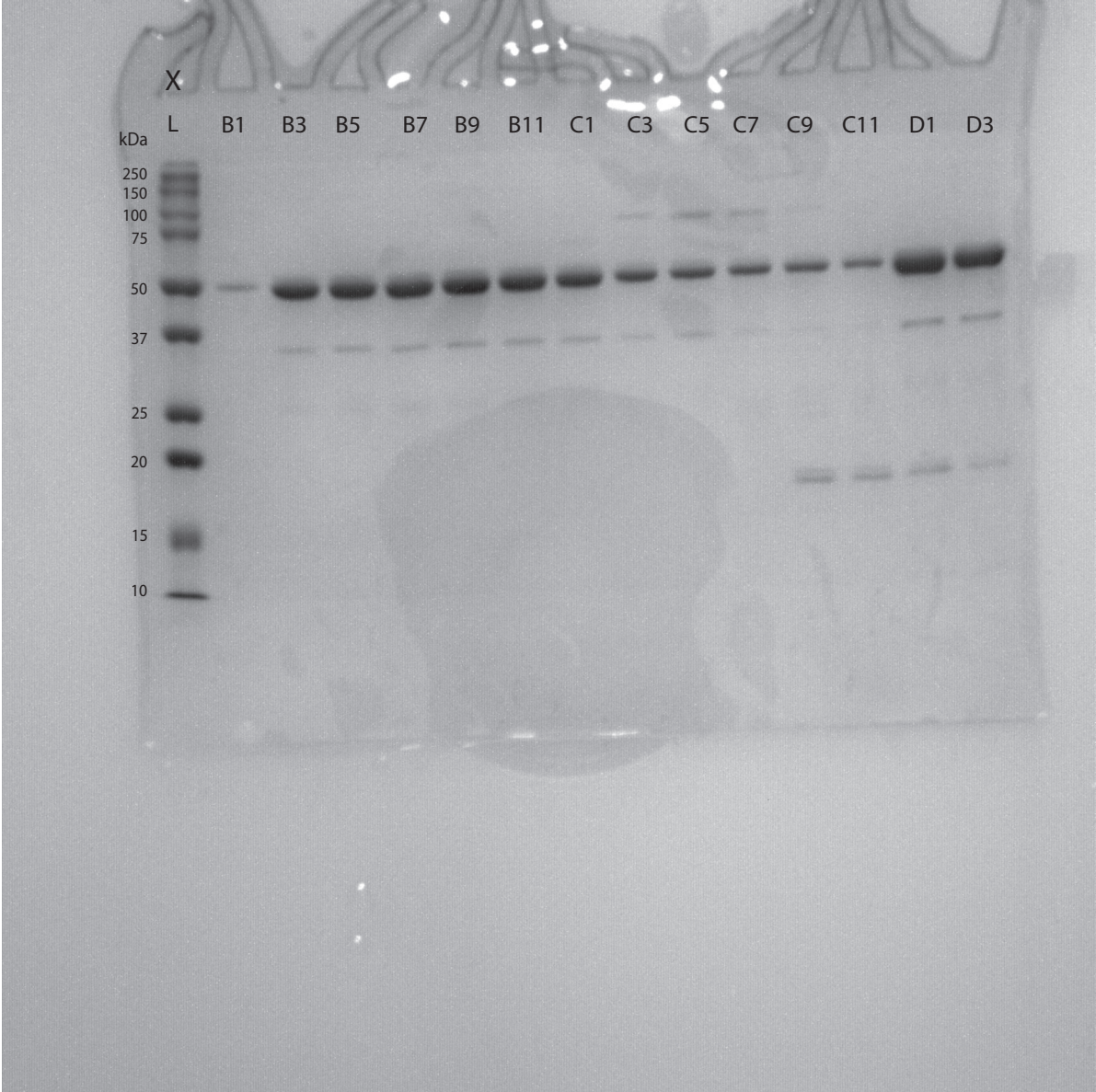




Figure S6B Captured by InGenius3

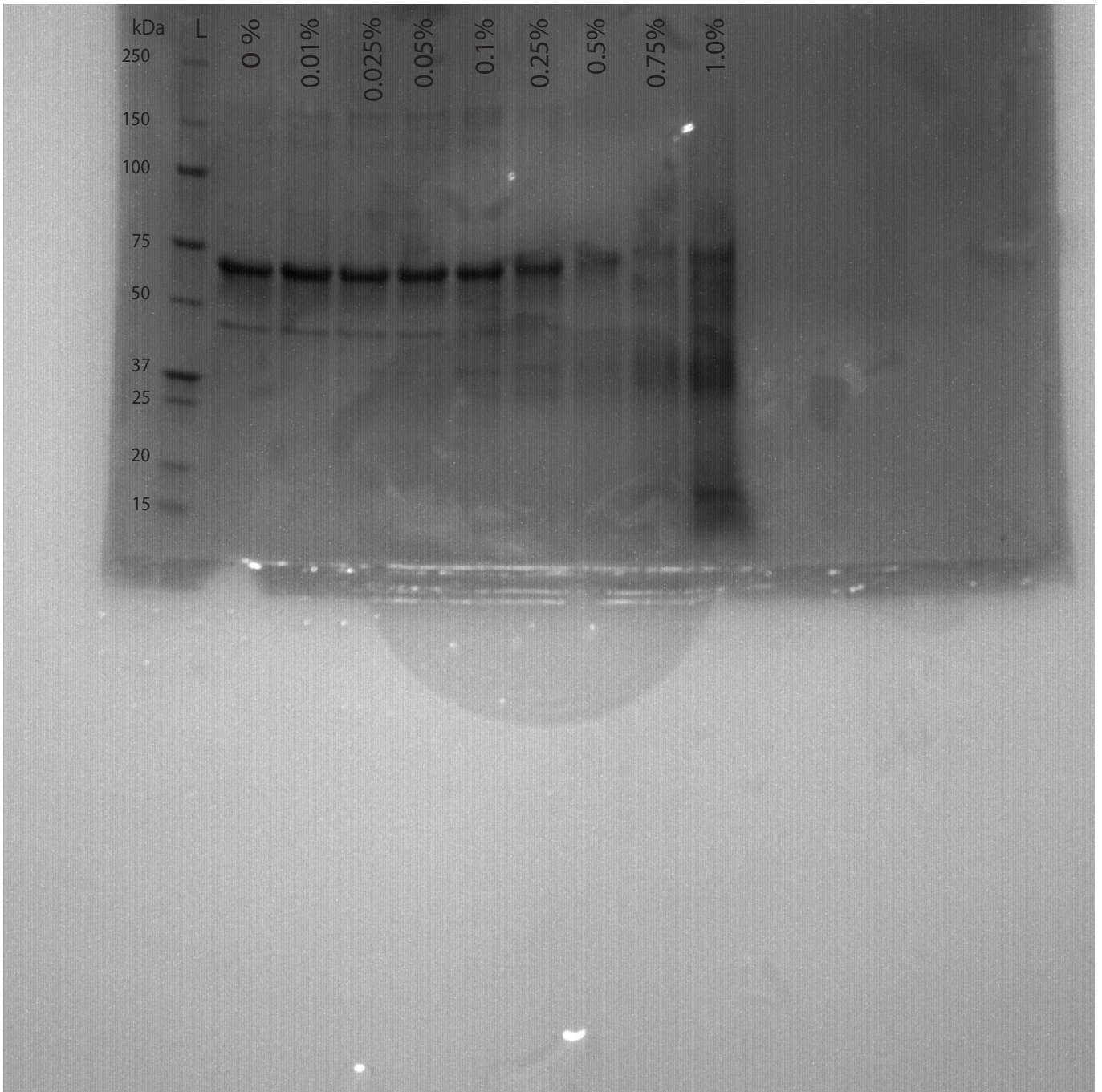


Figure S8A WT Captured by InGenius3

X

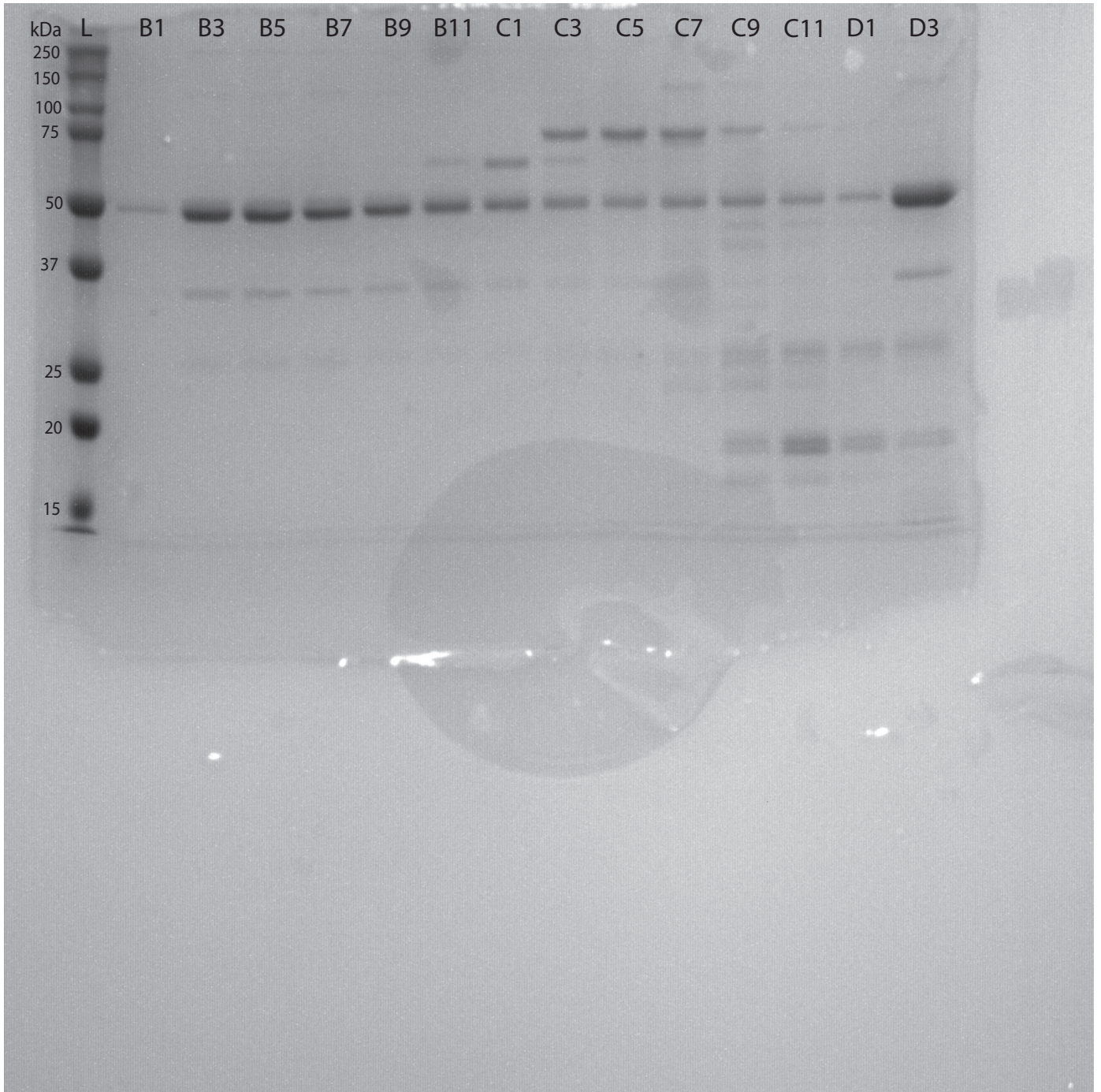




Figure S8A K274-K284 Mut Captured by BioRad GelDoc GO

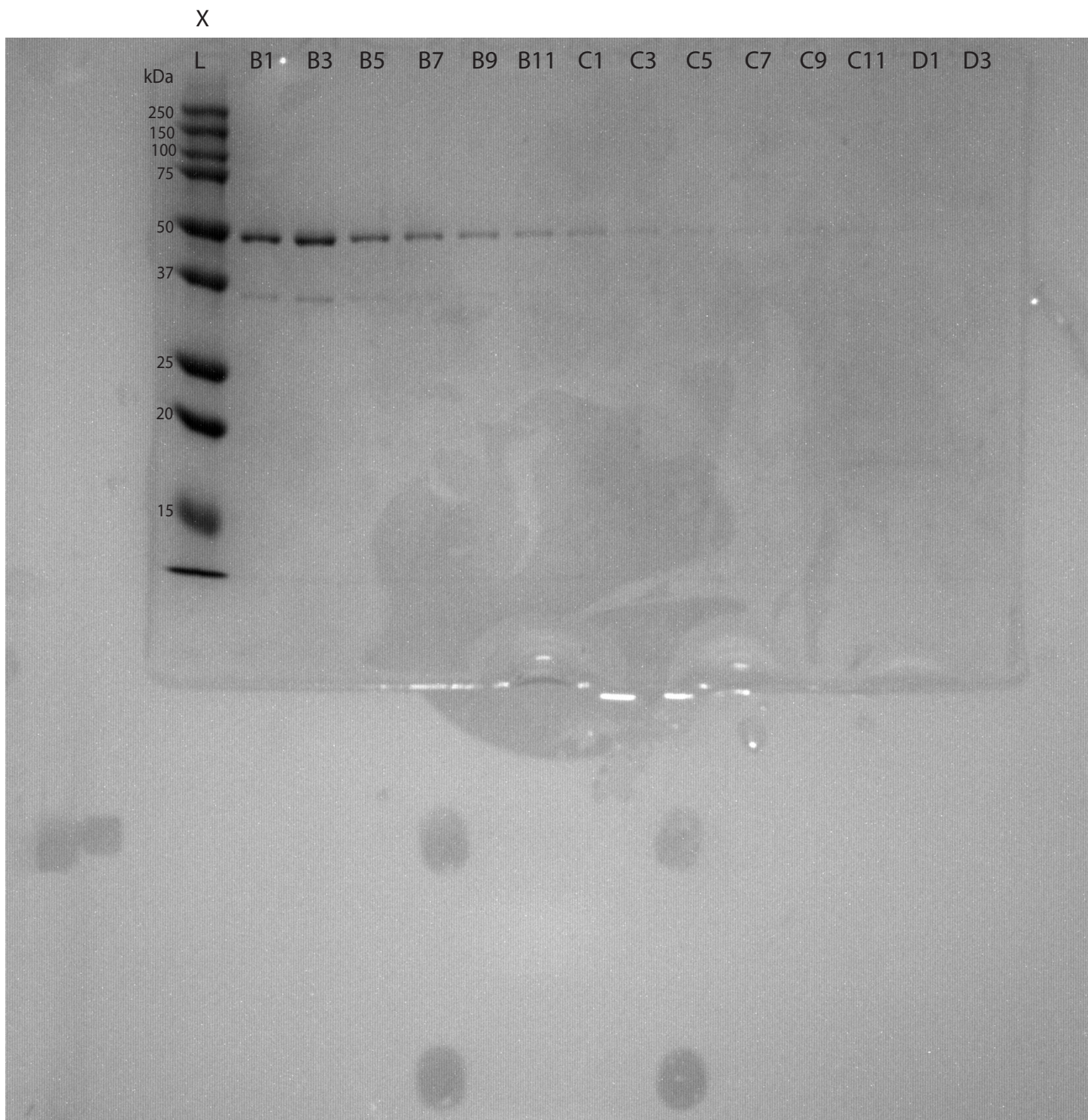


Figure S8A K259-K66 Mut Captured by BioRad GelDoc GO

