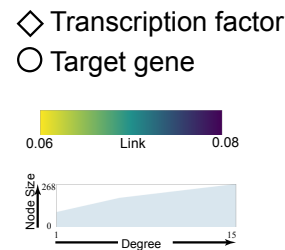


CC:intracellular organelle
 MF:DNA-binding transcription factor activity
 BP:response to acid chemical



Module assigned by WGCNA

- Brown
- Yellow
- Black
- Turquoise
- Blue
- Green
- Red
- Unclustered

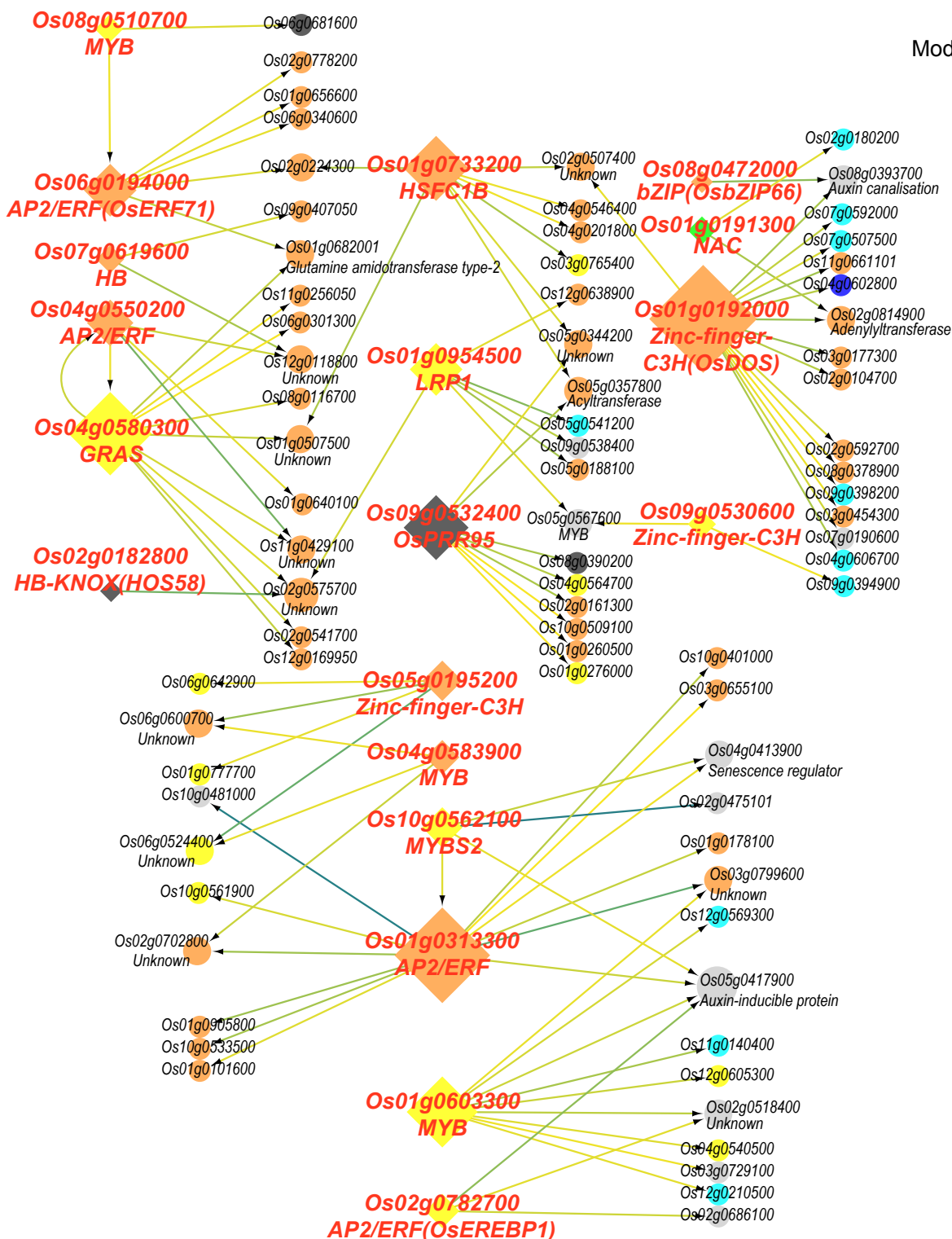


Fig. S12. The third type of regulatory network. The annotations in the upper left corner are the GO terms that minimize the *P*-value in the enrichment analysis of all genes in the network; CC: cell components; MF: Molecular function; BP: Biological process. Transcription factors are annotated with symbols or family names; descriptions of target genes regulated by more than two transcription factors are annotated.