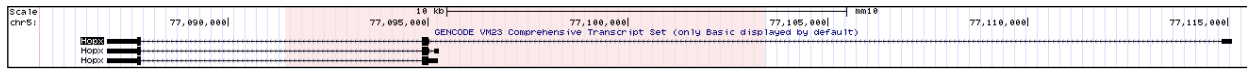
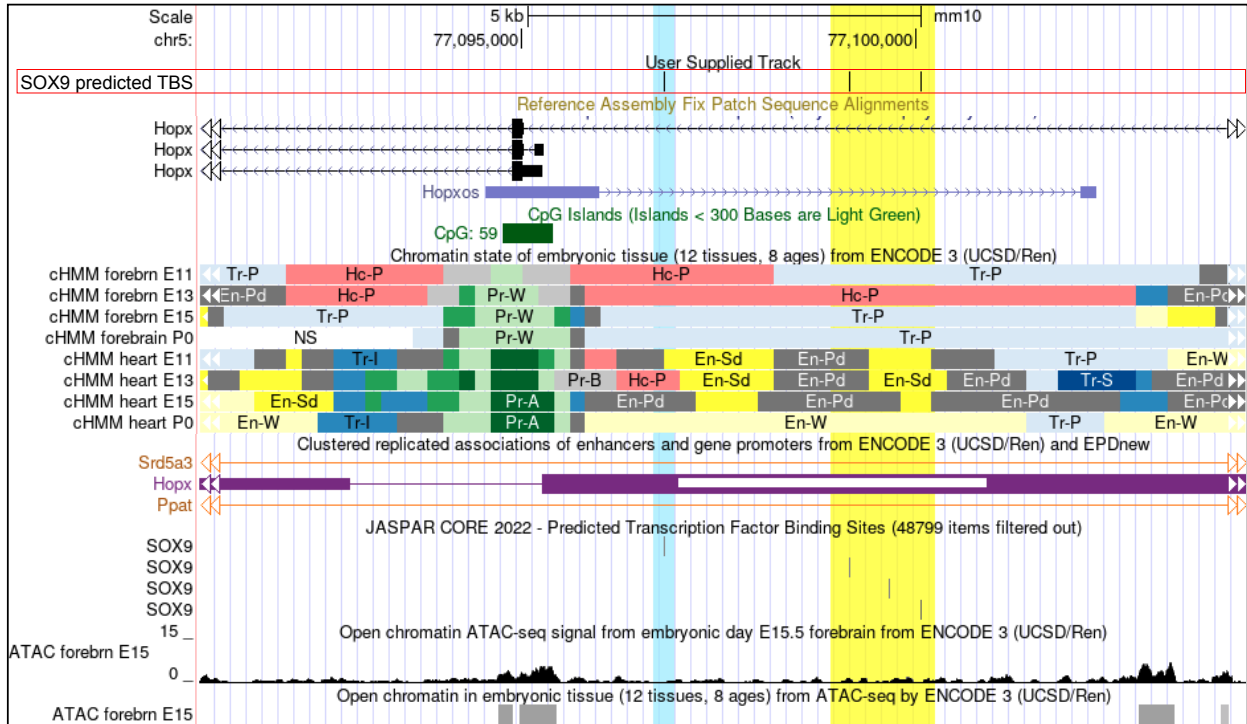


A**B****C**

- State 1 - Dark Green - Promoter, Active (Pr-A)
- State 2 - Light Green - Promoter, Weak (Pr-W)
- State 3 - Light Grey - Promoter, Bivalent (Pr-B)
- State 4 - Green - Promoter, Flanking Region (Pr-F)
- State 5 - Bright Yellow - Enhancer, Strong TSS-distal (En-Sd)
- State 6 - Bright Yellow - Enhancer, Strong TSS-proximal (En-Sp)
- State 7 - Light Yellow - Enhancer, Weak (En-W)
- State 8 - Dark Grey - Enhancer, Poised TSS-distal (En-Pd)
- State 9 - Dark Grey - Enhancer, Poised TSS-proximal (En-Pp)
- State 10 - Dark Blue - Transcription, Strong (Tr-S)
- State 11 - Royal Blue - Transcription, Permissive (Tr-P)
- State 12 - Light Blue - Transcription, Initiation (Tr-I)
- State 13 - Salmon - Heterochromatin, Polycomb-associated (Hc-P)
- State 14 - Pink - Heterochromatin, H3K9me3-associated (Hc-H)
- State 15 - White - No significant signal (Ns)