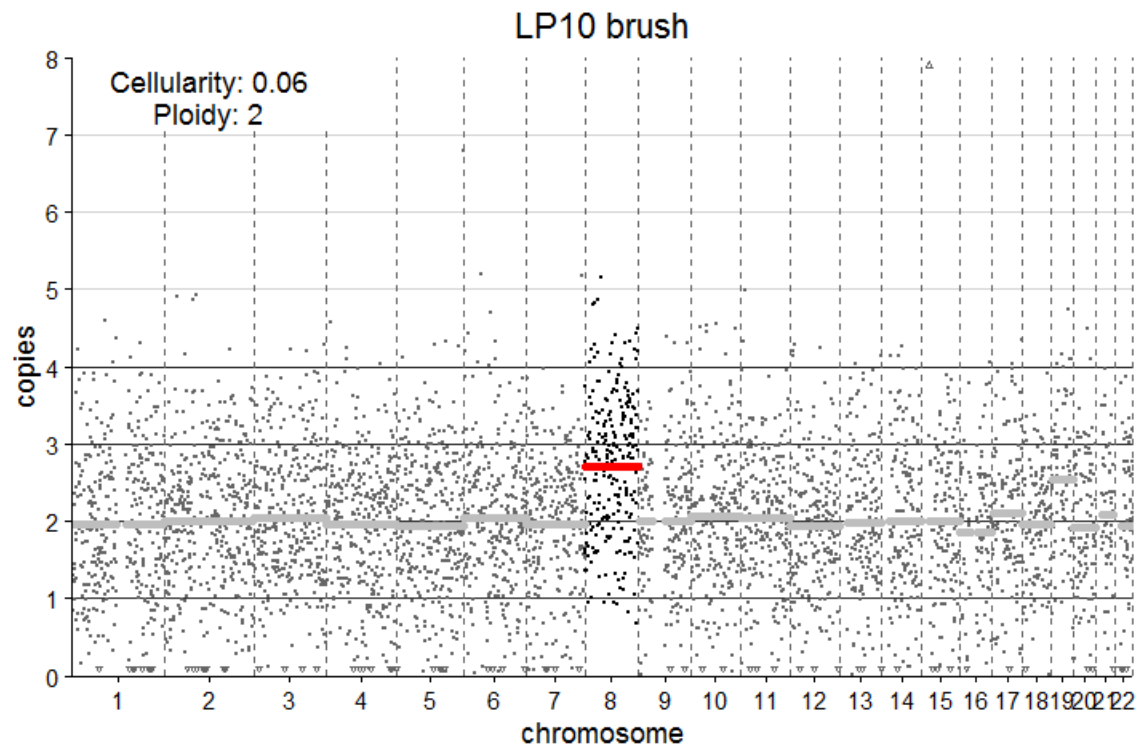
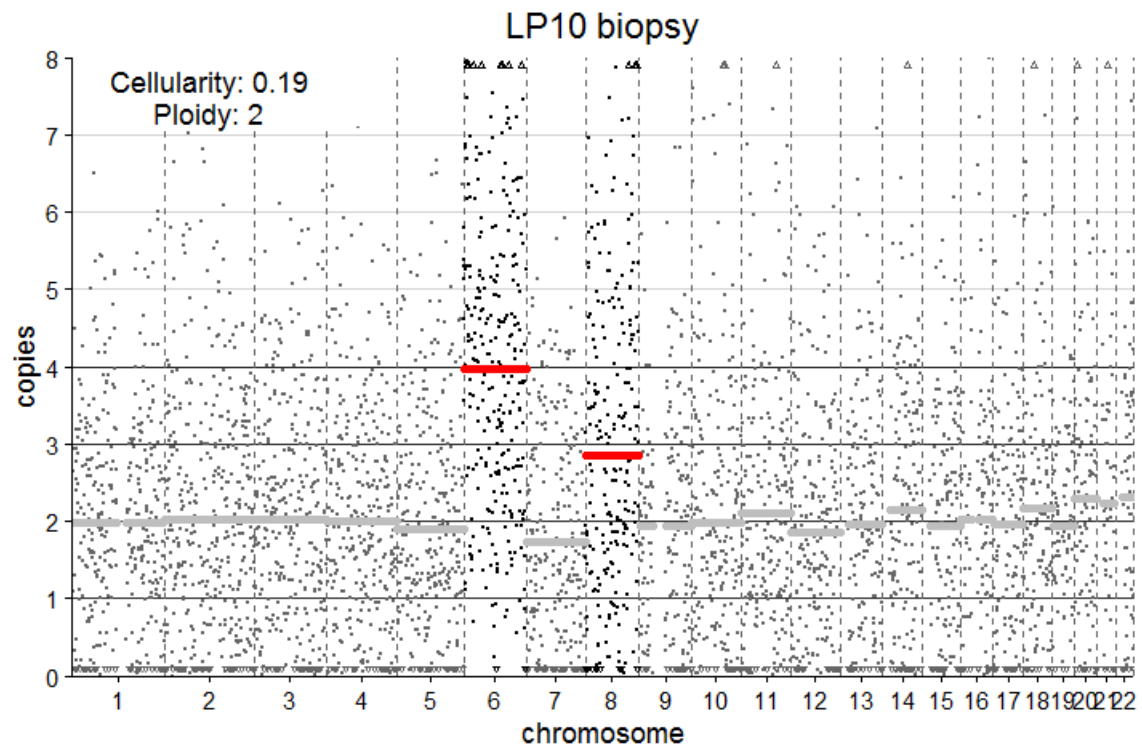
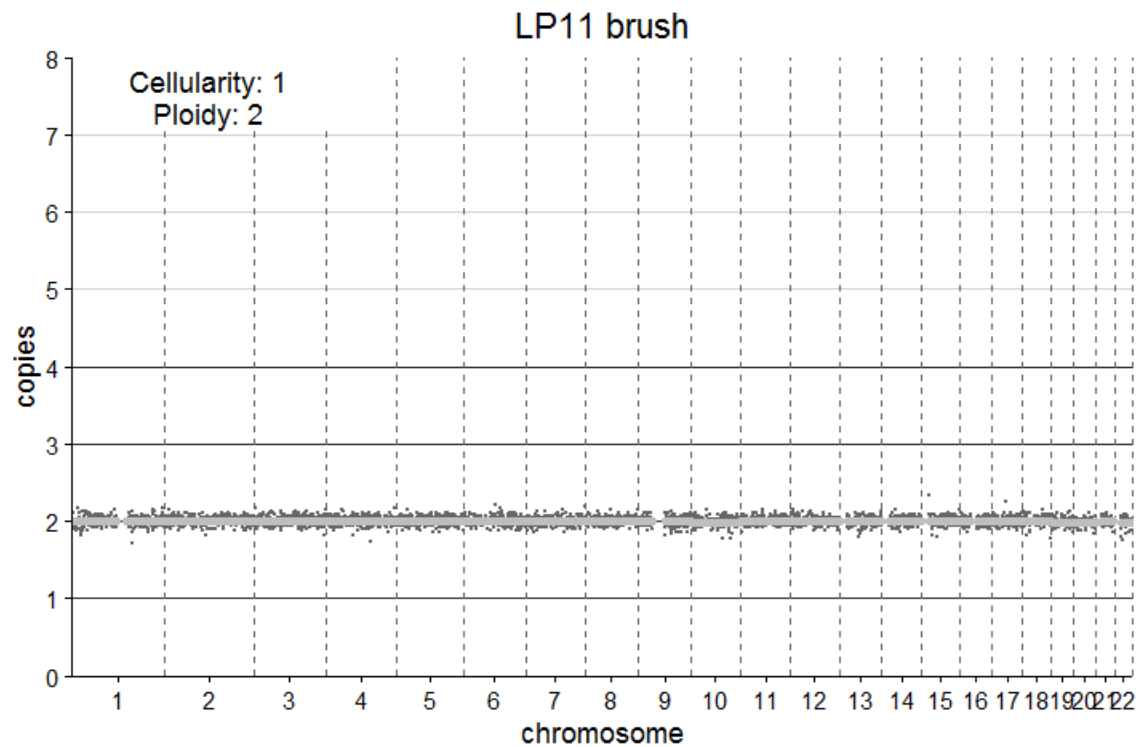
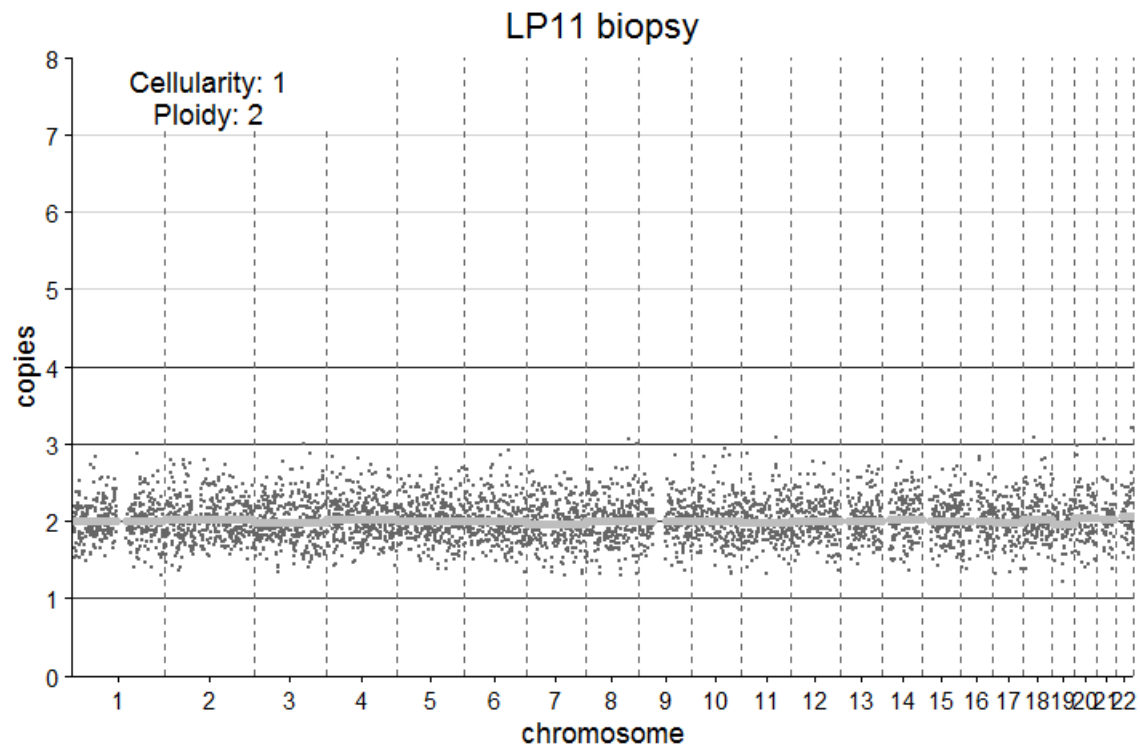


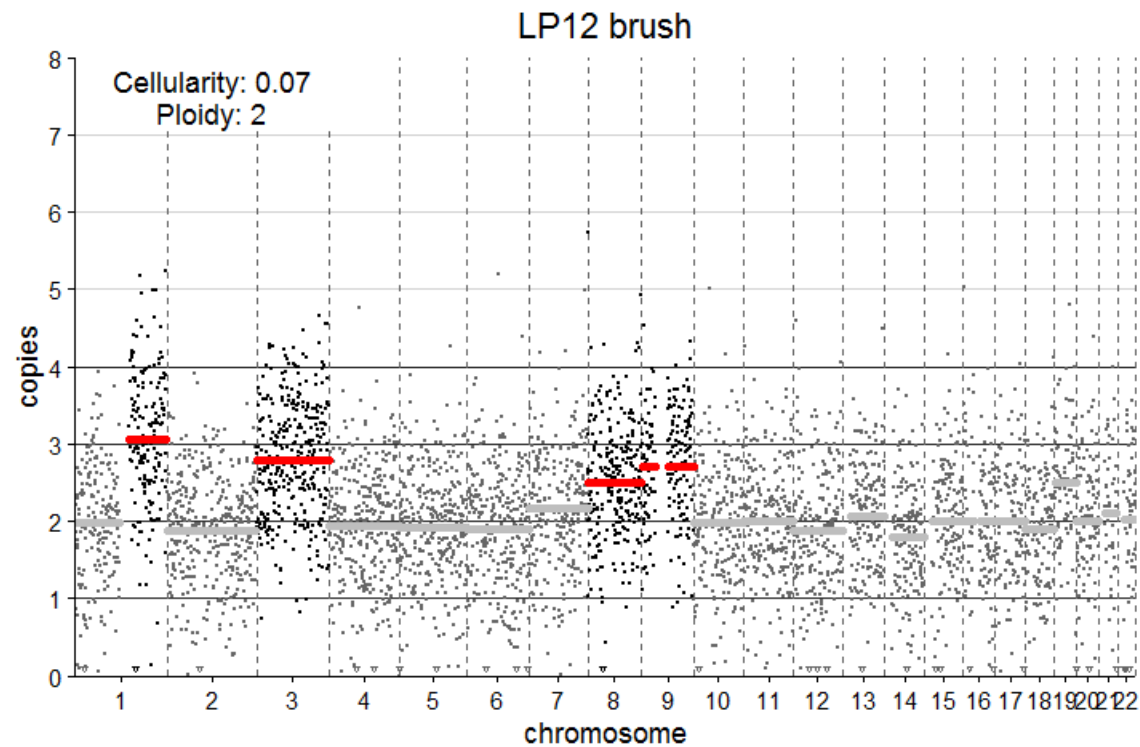
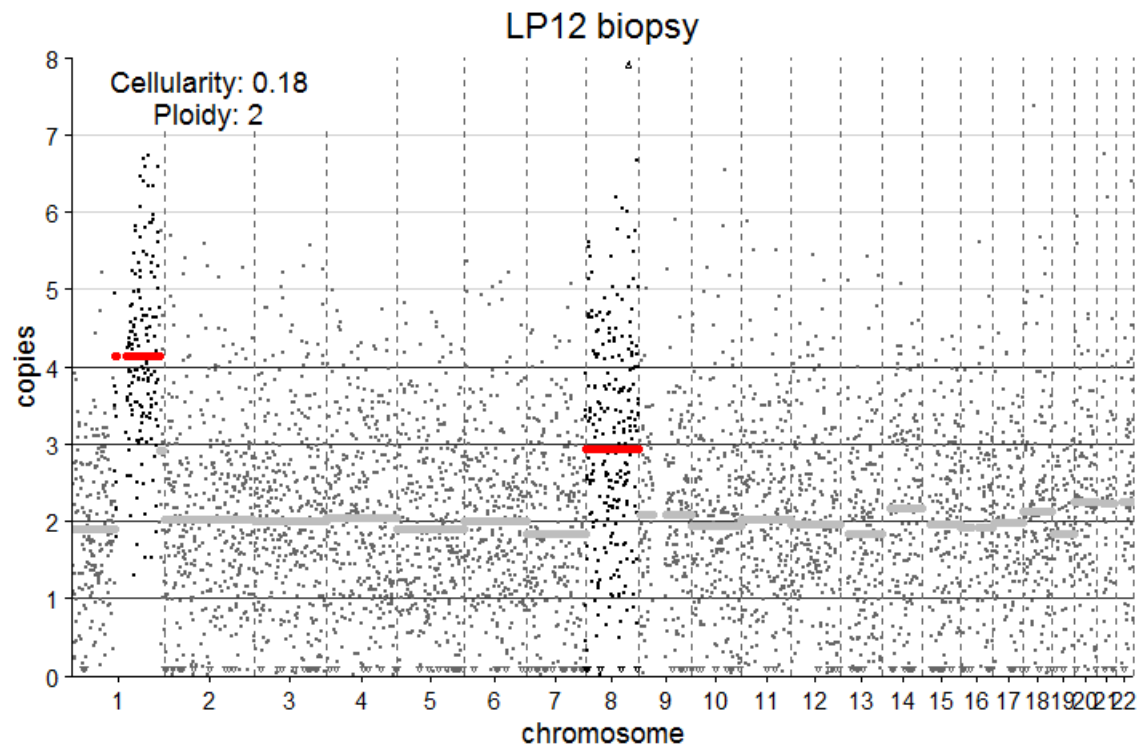
Sample	Chr	Pos	Gene	REF	ALT	read depth	ref reads	alt reads	VAF (%)	Change	Coverage			
											Sample	Mean	Max	Min
LP09-biopsy	chr2	202139659	CASP8	C	T	50	45	5	10	p.Gln274*				
LP09-biopsy	chr3	178936091	PIK3CA	G	A	53	47	6	11	p.Glu545Lys	LP09-biopsy	62	221	11
LP09-biopsy	chr4	153268218	FBXW7	G	T	70	65	5	7	p.Thr197Asn				
LP09-biopsy	chr9	21971186	CDKN2A	G	A	77	26	51	66	p.Arg58*	LP09-brush	1296	2392	254
LP09-biopsy	chr17	7574003	TP53	G	A	51	16	35	69	p.Arg342*				
LP09-brush	chr9	21971186	CDKN2A	G	A	744	704	40	5.4	p.Arg58*				
LP09-brush	chr17	7574003	TP53	G	A	1161	1113	48	4.1	p.Arg342*				



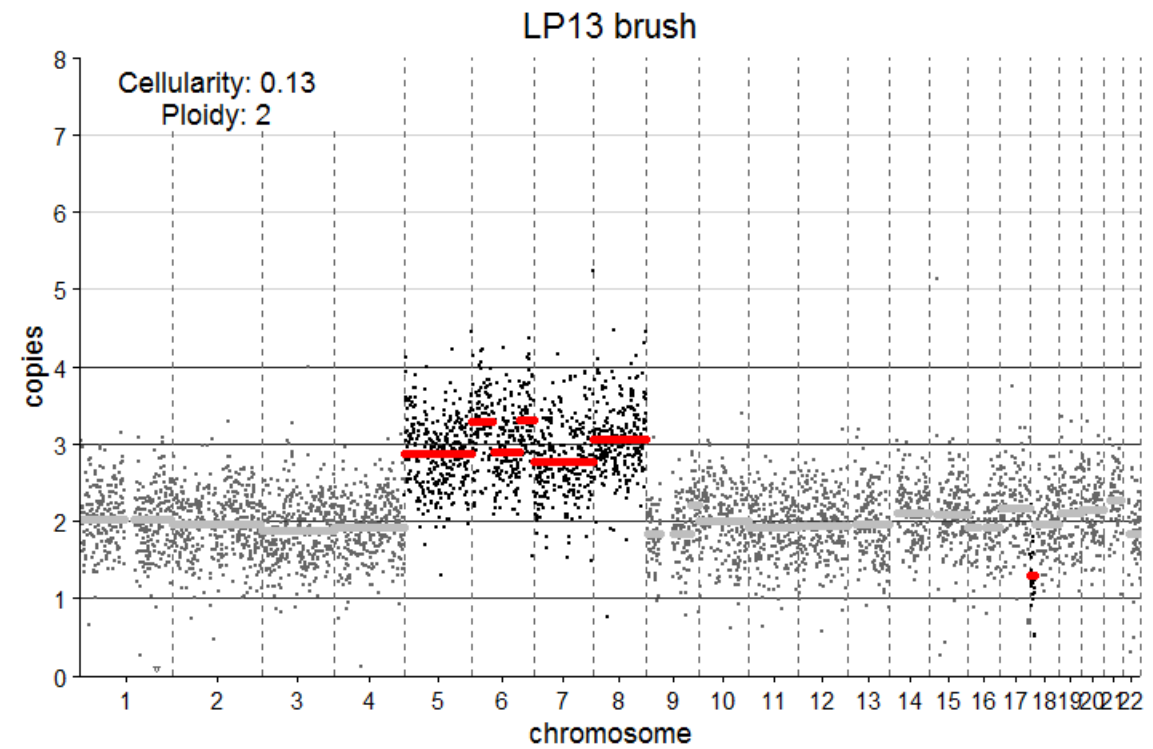
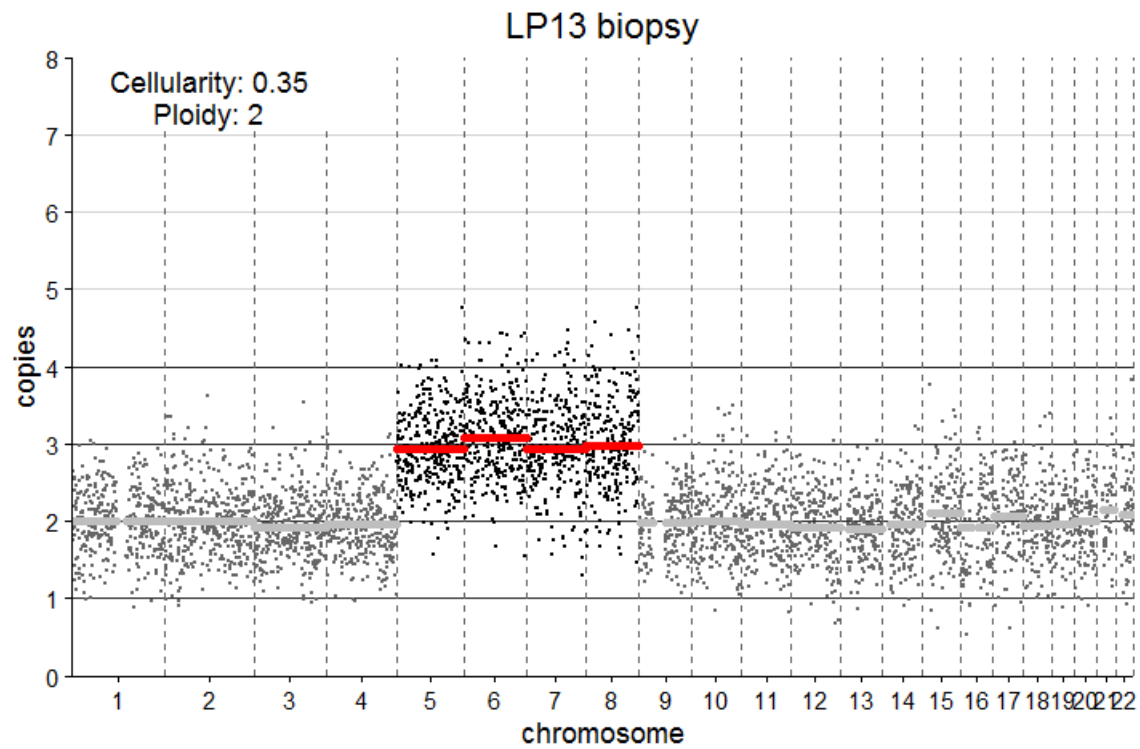
Sample	Coverage		
	Mean	Max	Min
LP10-biopsy	735	2082	108
LP10-brush	1841	3098	404



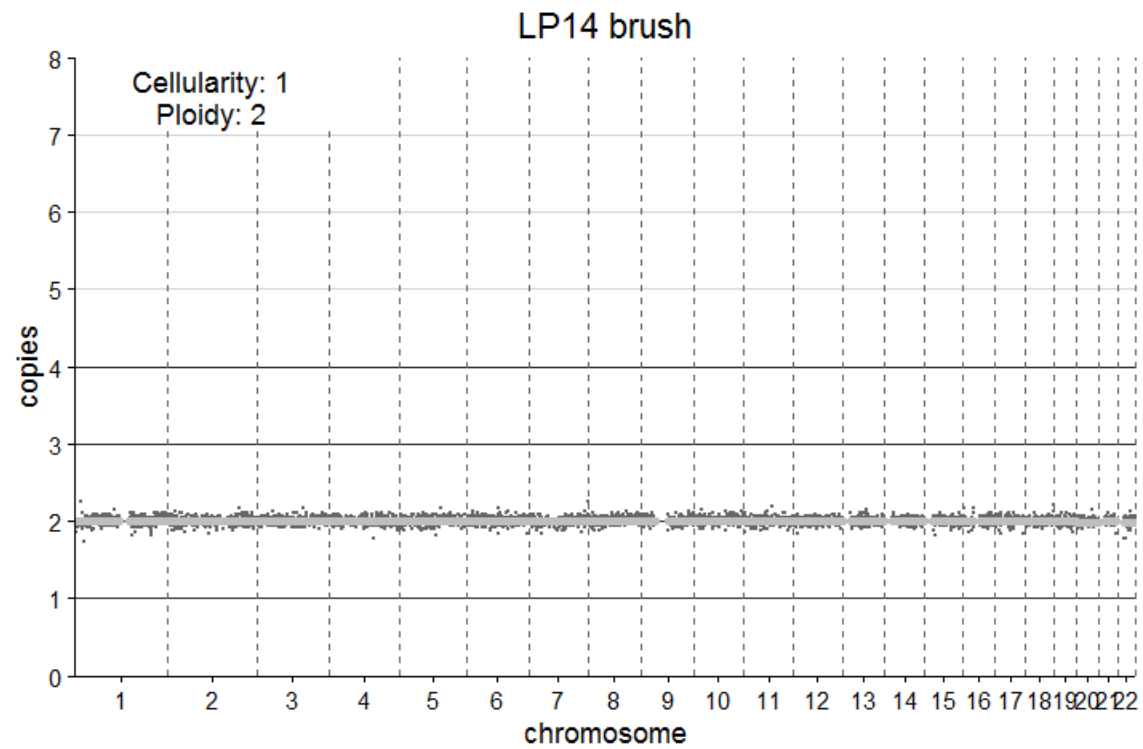
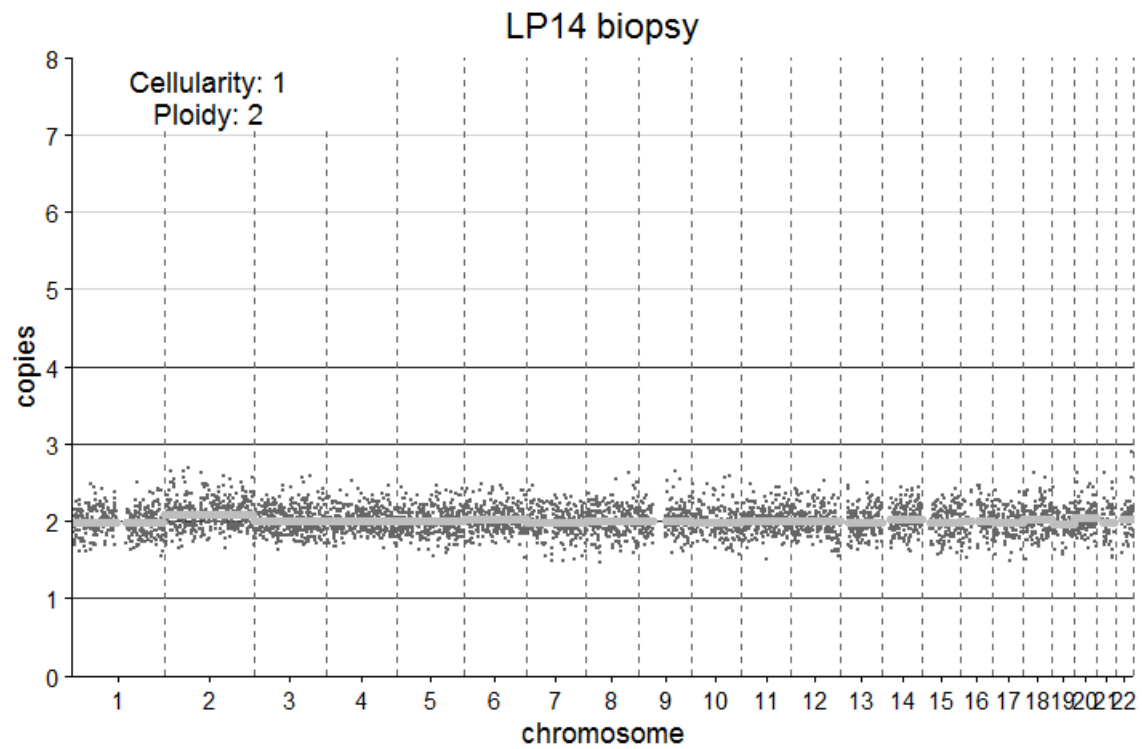
Sample	Chr	Pos	Gene	REF	ALT	read depth	ref reads	alt reads	VAF (%)	Change	Coverage			
											Sample	Mean	Max	Min
LP11-biopsy	chr9	139399444	NOTCH1	C	CG	583	506	76	13.06	p.Glu1567fs	LP11-biopsy	344	942	88
LP11-biopsy	chr9	139409752	NOTCH1	C	CGG	451	406	45	9.98	p.Gly669fs	LP11-brush	1332	2104	218



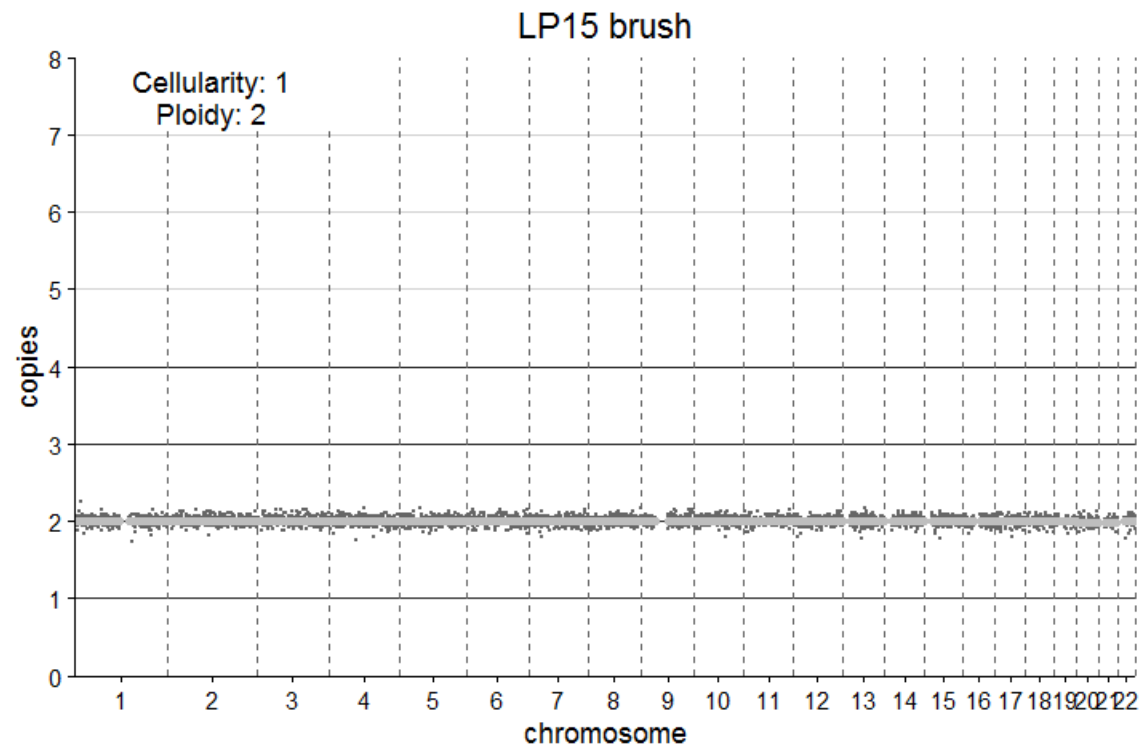
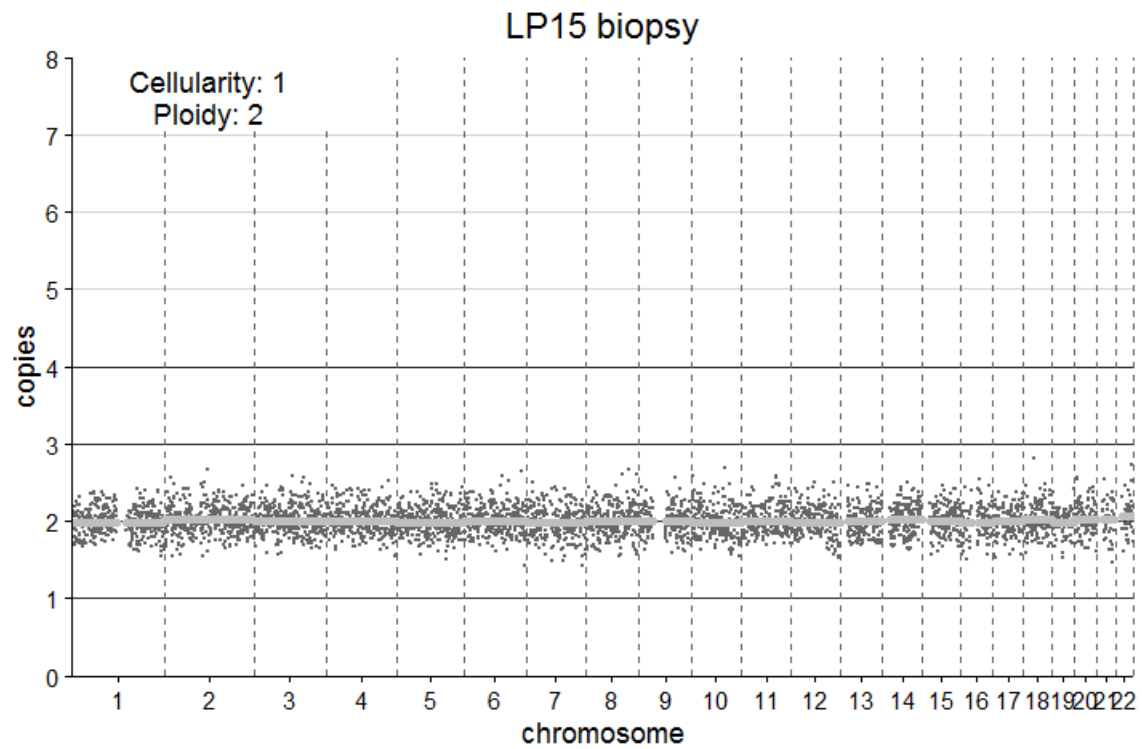
Sample	Chr	Pos	Gene	REF	ALT	read depth	ref reads	alt reads	VAF (%)	Change	Coverage			
											Sample	Mean	Max	Min
LP12-biopsy	chr5	176709532	NSD1	T	G	451	420	31	6.9	p.Tyr1987Asp	LP12-biopsy	729	1911	88
LP12-brush	chr10	89692904	PTEN	C	T	1690	1641	49	2.9	p.Arg130*	LP12-brush	1808	4033	429
LP12-brush	chr10	89692936	PTEN	A	T	1689	1646	43	2.55	p.Leu140Phe	LP12-brush	1808	4033	429



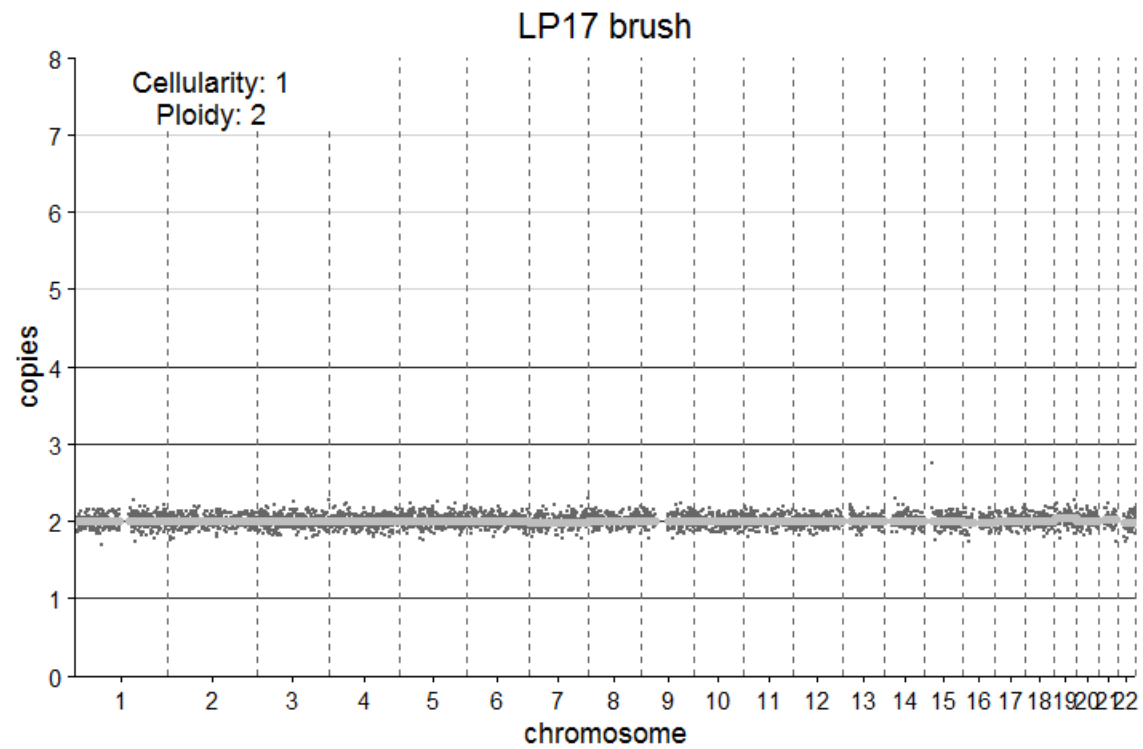
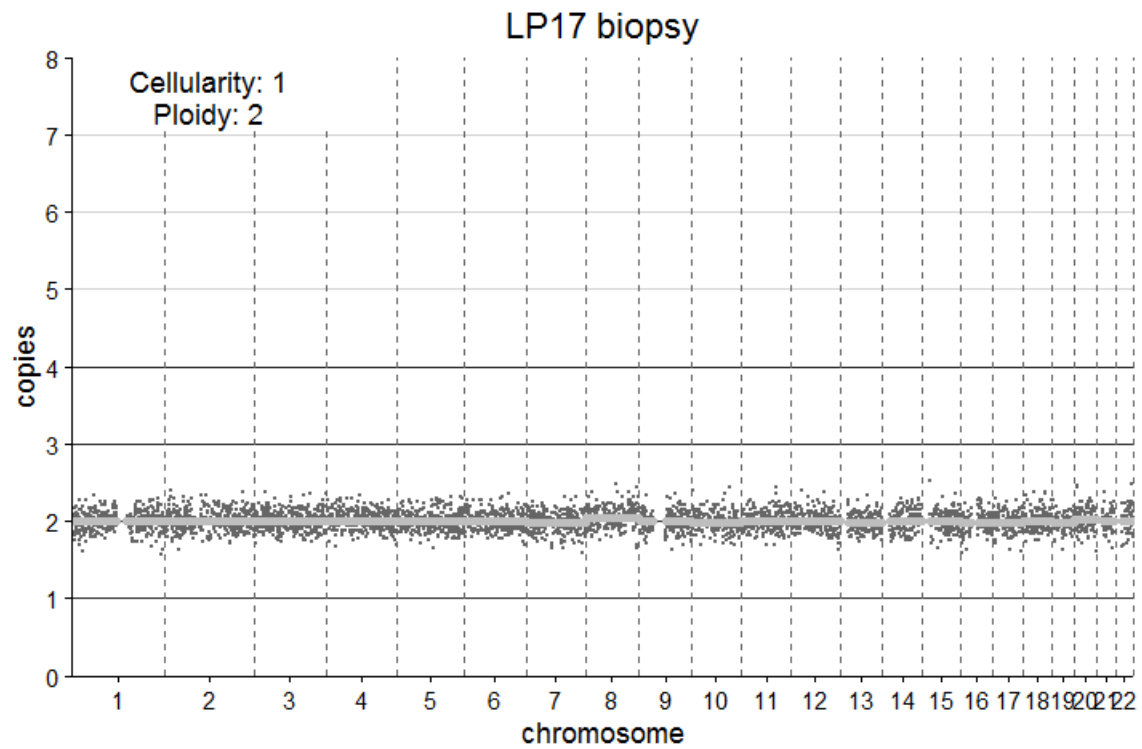
Sample	Chr	Pos	Gene	REF	ALT	read depth	ref reads	alt reads	VAF (%)	Change	Coverage			
											Sample	Mean	Max	Min
LP13-biopsy	chr17	7578281	TP53	G	A	544	440	102	19	p.Pro190Ser	LP13-biopsy	561	1629	129
LP13-brush	chr17	7578281	TP53	G	A	1233	1132	101	8.2	p.Pro190Ser	LP13-brush	1229	2130	299



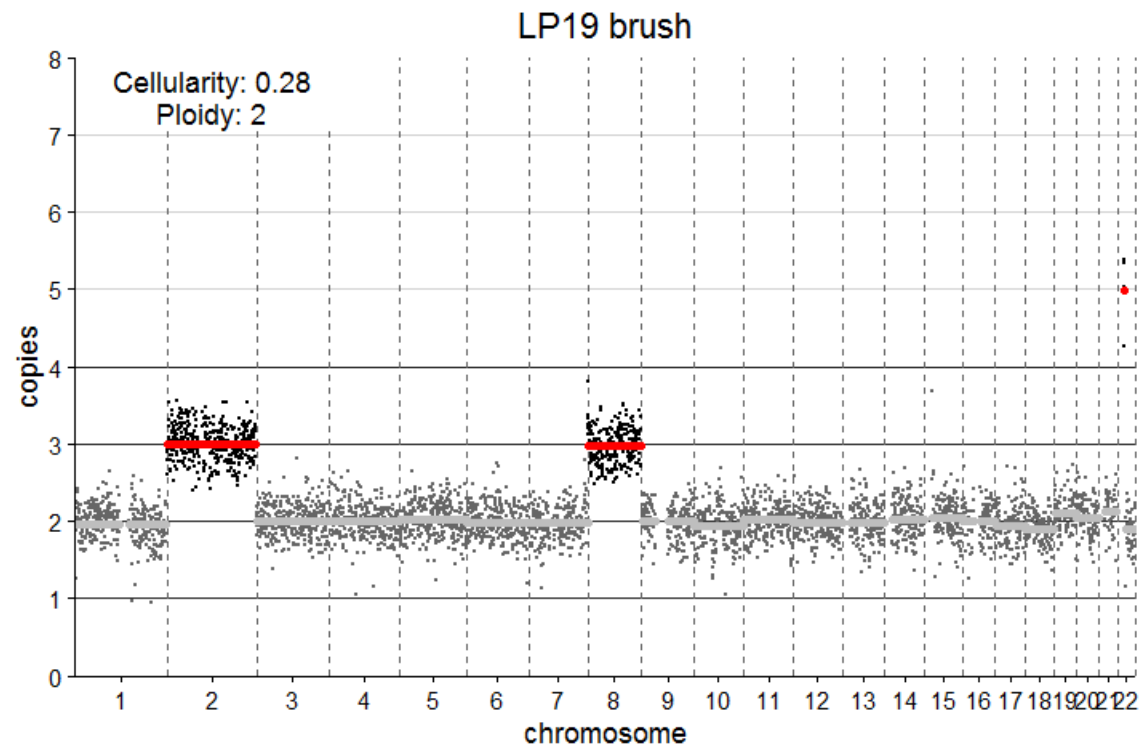
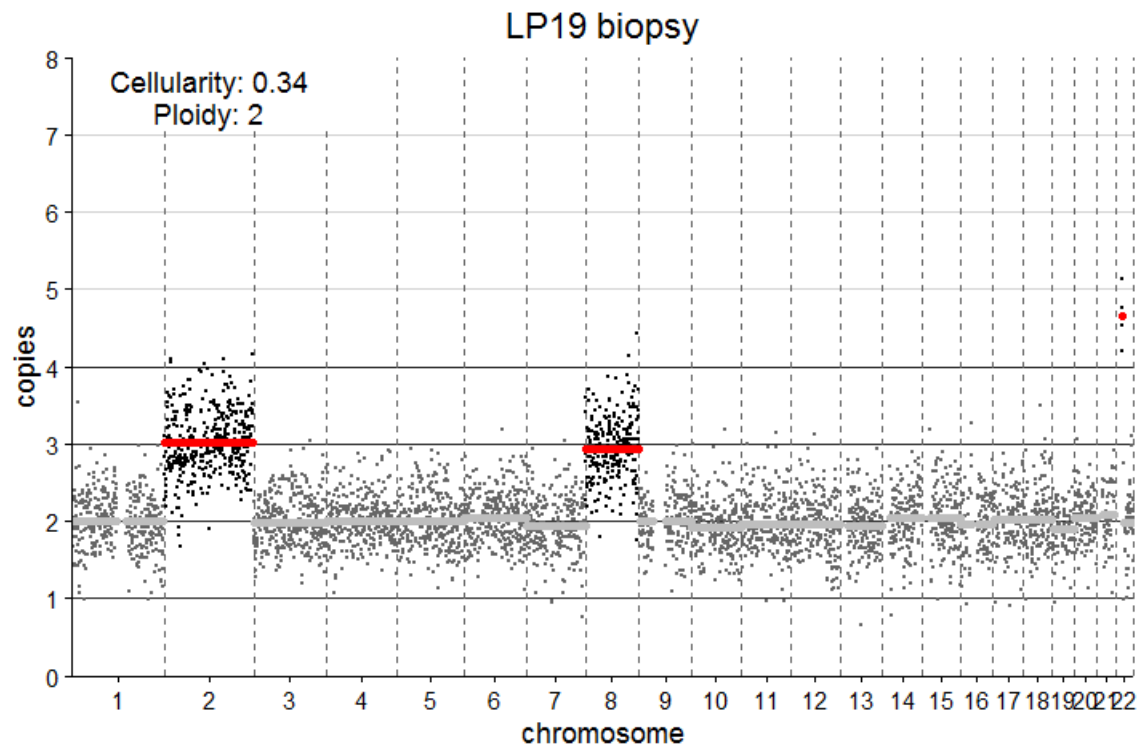
Sample	Coverage		
	Mean	Max	Min
LP14-biopsy	446	1024	84
LP14-brush	1490	2469	307



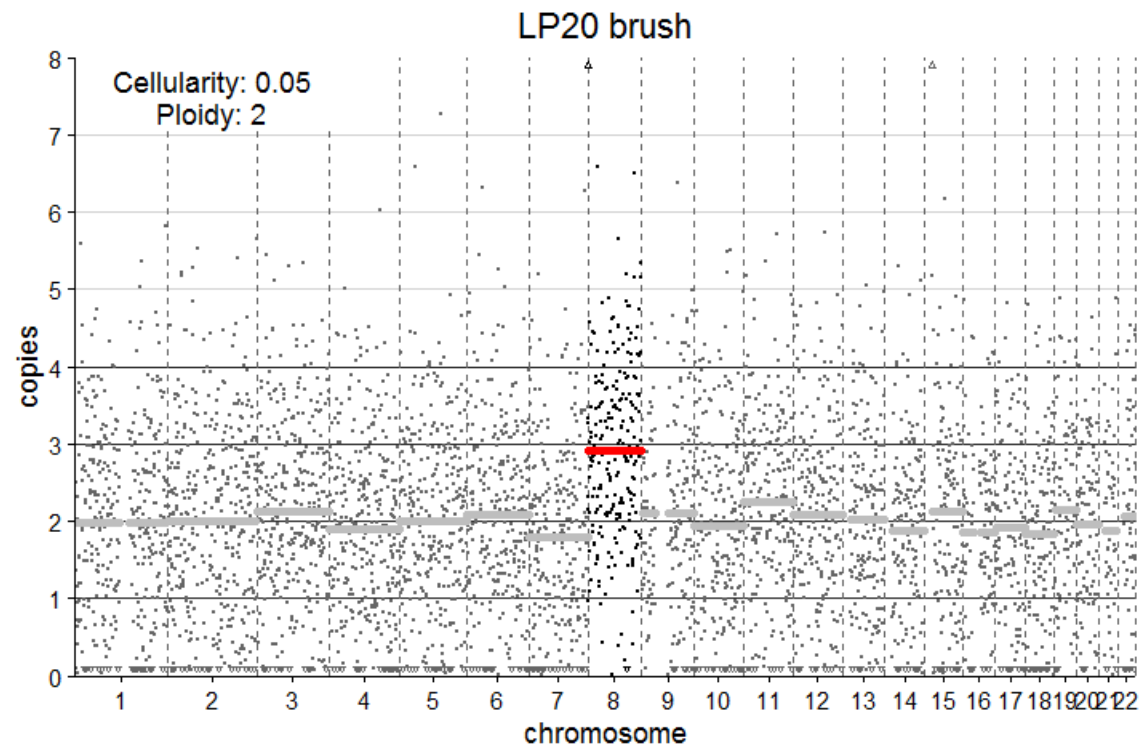
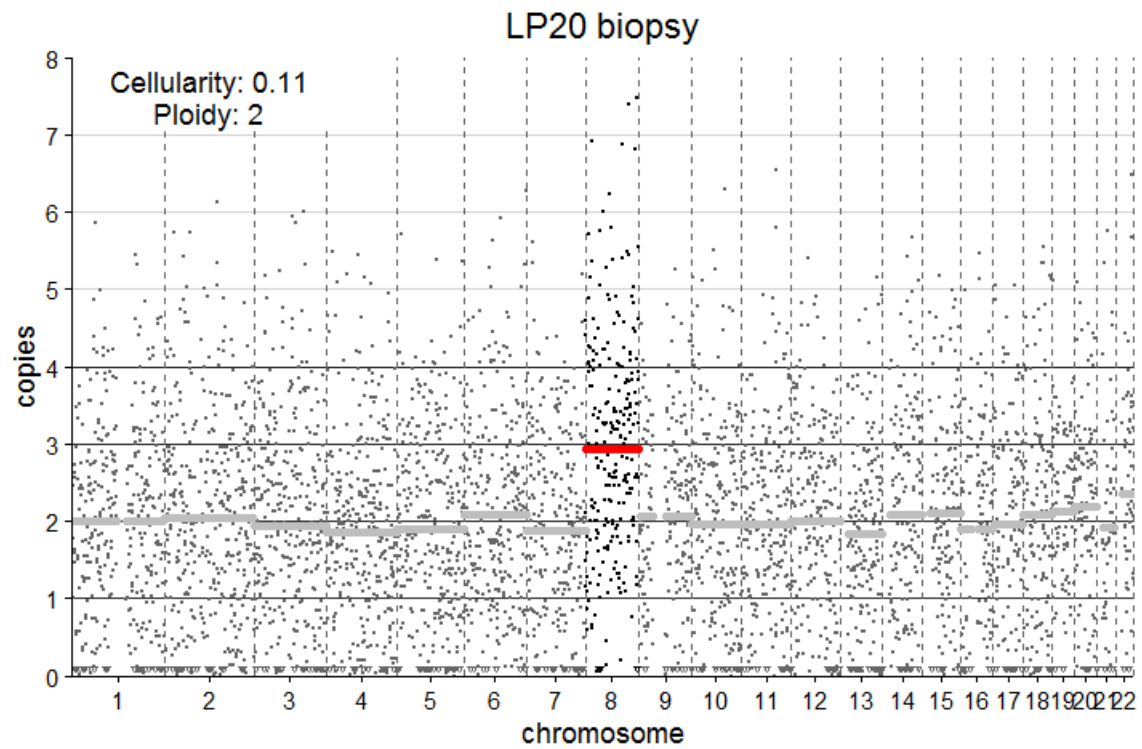
Sample	Coverage		
	Mean	Max	Min
LP15-biopsy	537	1205	125
LP15-brush	784	1491	225



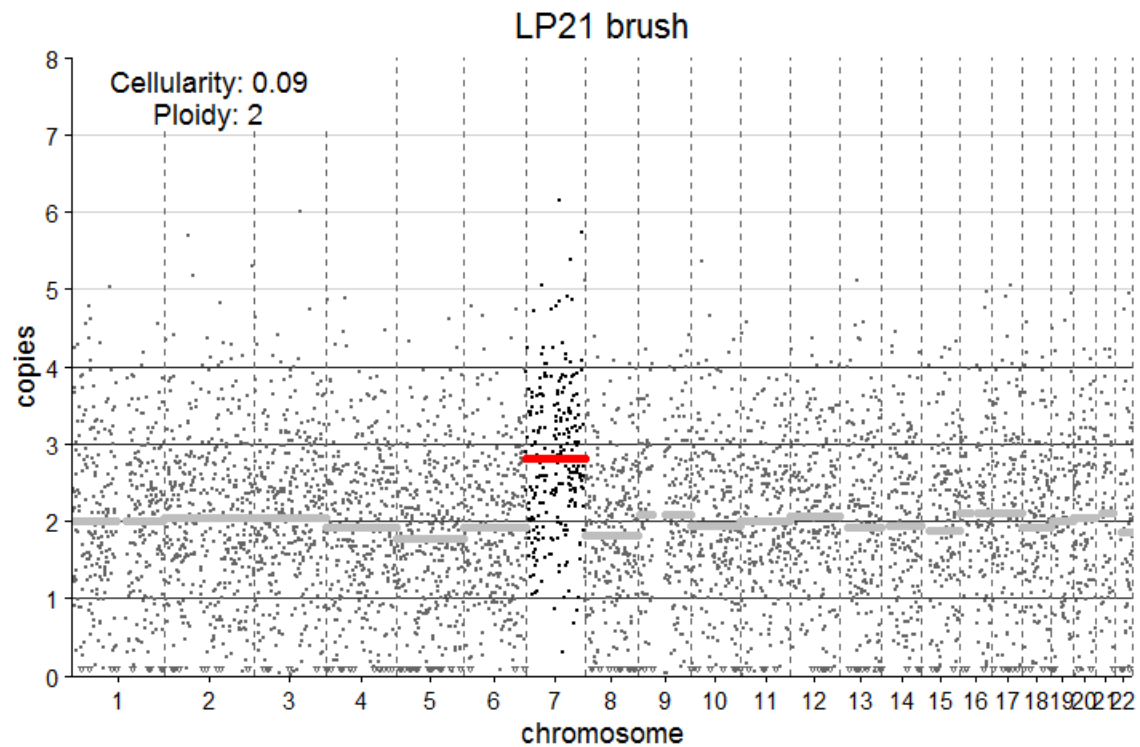
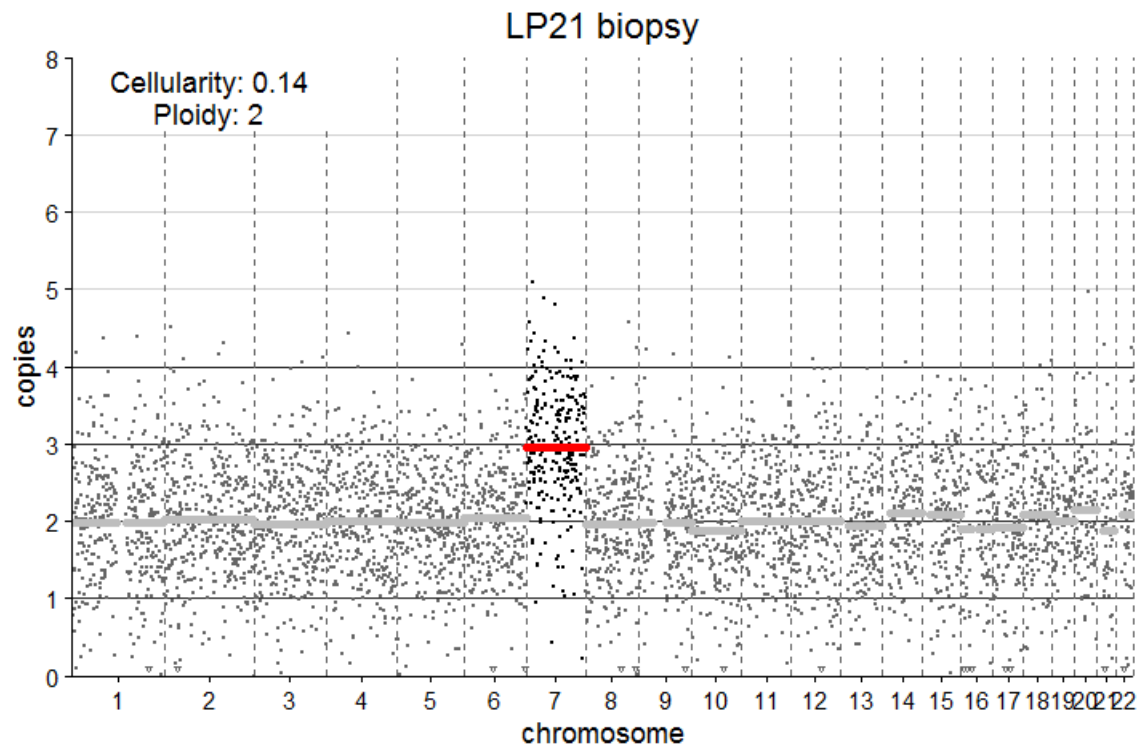
Sample	Coverage		
	Mean	Max	Min
LP17-biopsy	906	2537	165
LP17-brush	548	1454	150



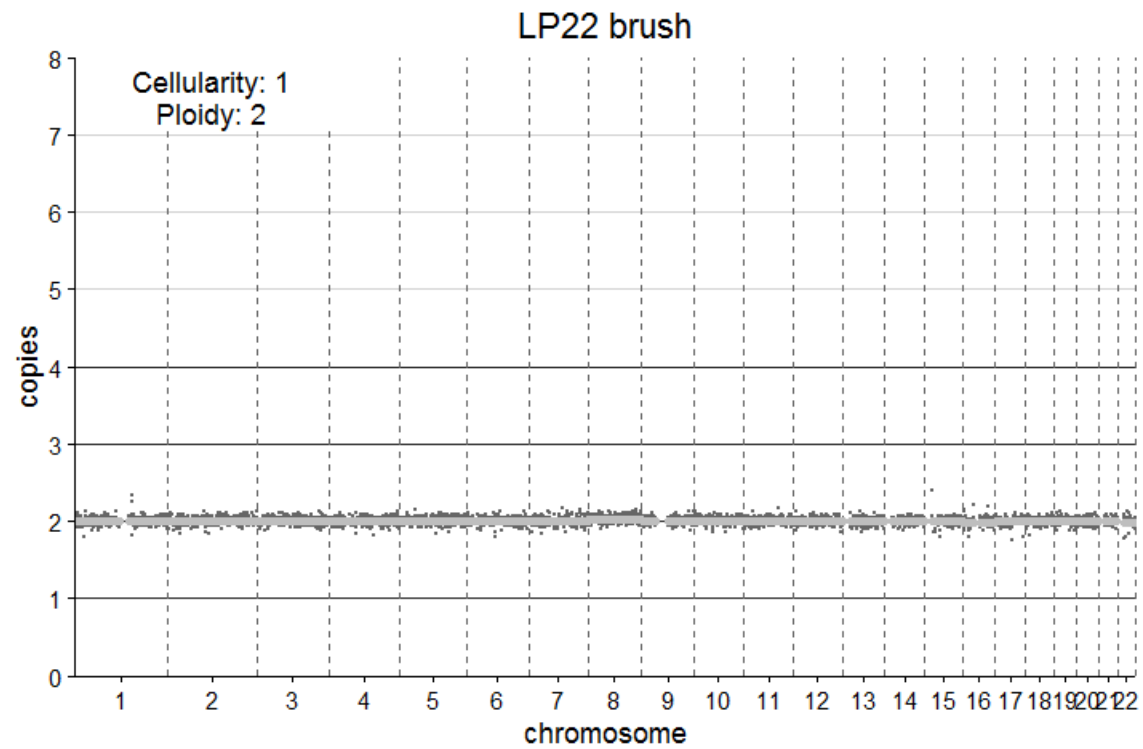
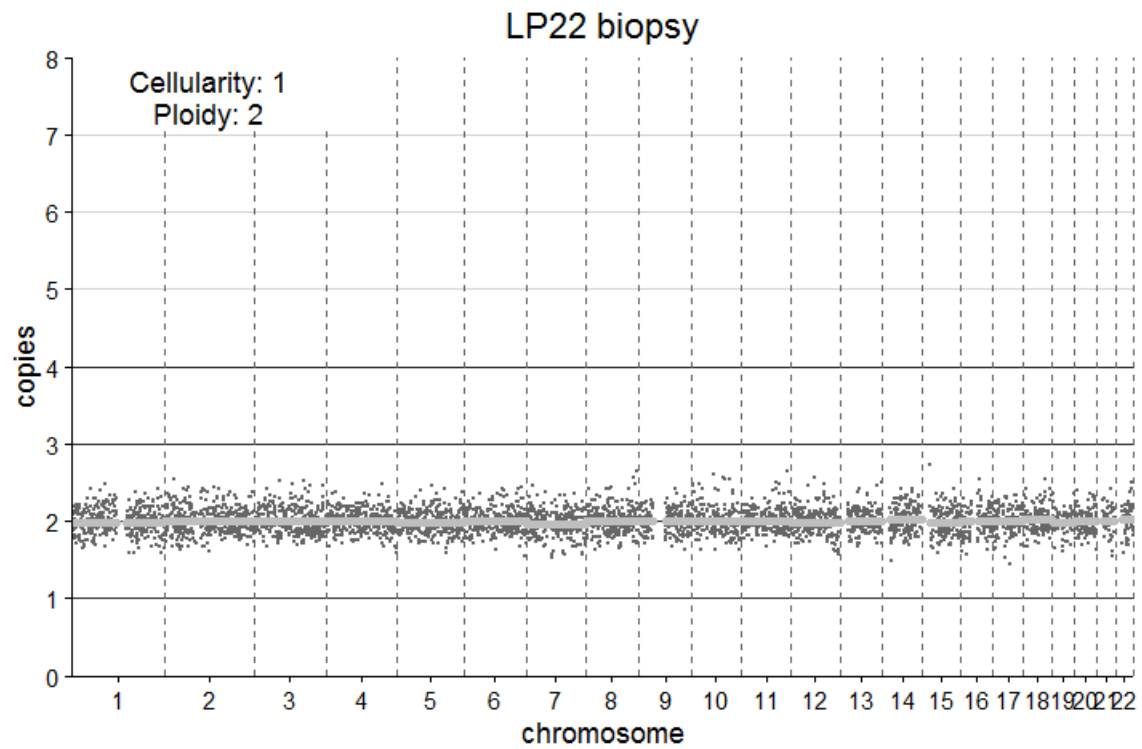
Sample	Chr	Pos	Gene	REF	ALT	read depth	ref reads	alt reads	VAF (%)	Change	Coverage			
											Sample	Mean	Max	Min
LP19-biopsy	chr17	7577548	TP53	C	T	894	742	152	17	p.Gly245Ser	LP19-biopsy	890	1739	193
LP19-brush	chr4	187532702	FAT1	CA	C	851	804	46	5	p.Phe3230fs	LP19-brush	850	1594	223
LP19-brush	chr17	7577548	TP53	C	T	906	783	122	13	p.Gly245Ser	LP19-brush	850	1594	223



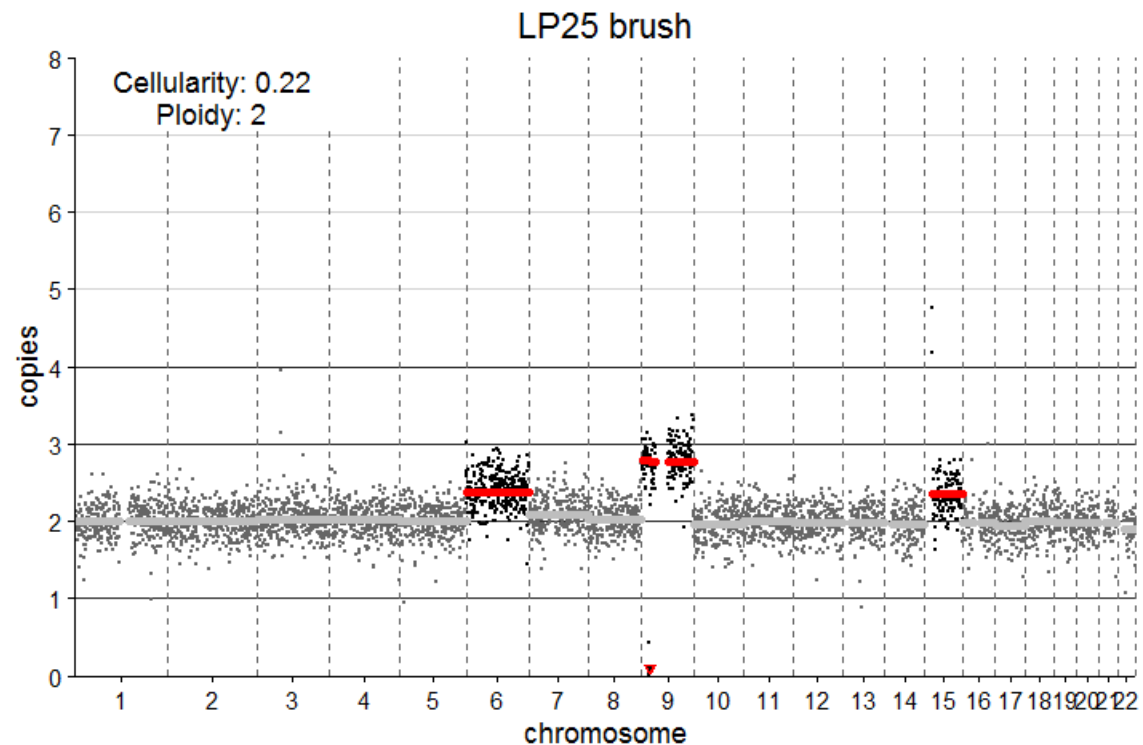
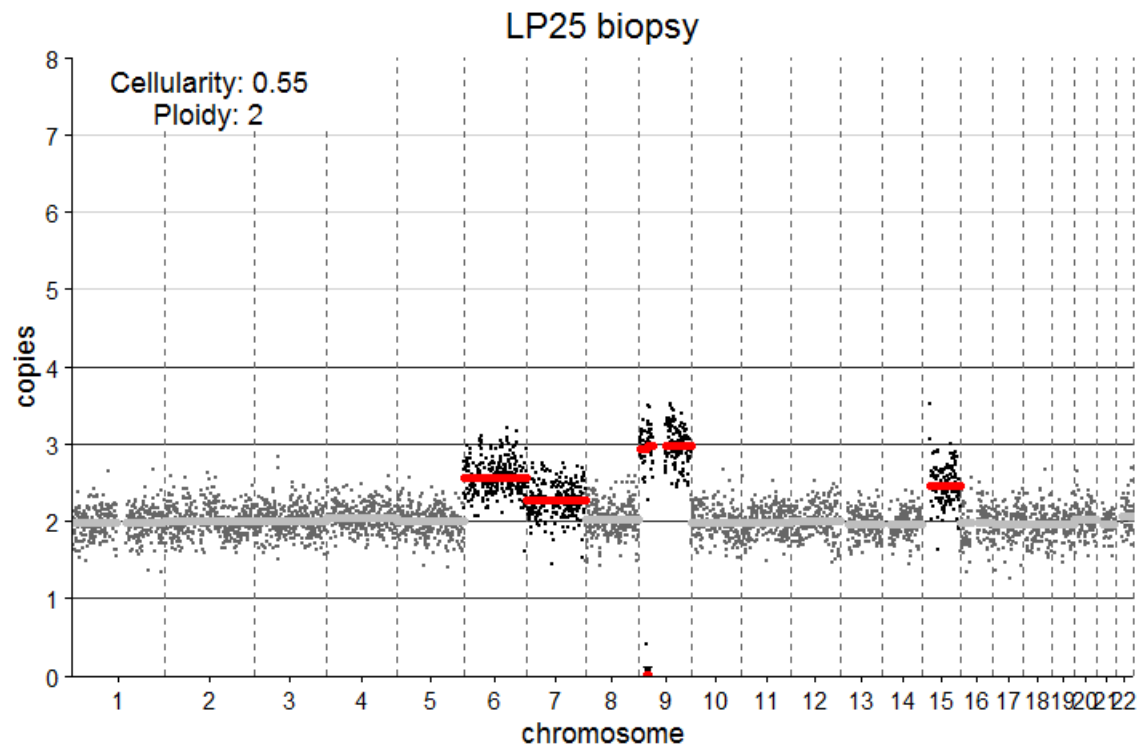
Sample	Coverage		
	Mean	Max	Min
LP20-biopsy	1786	4333	284
LP20-brush	843	1832	224



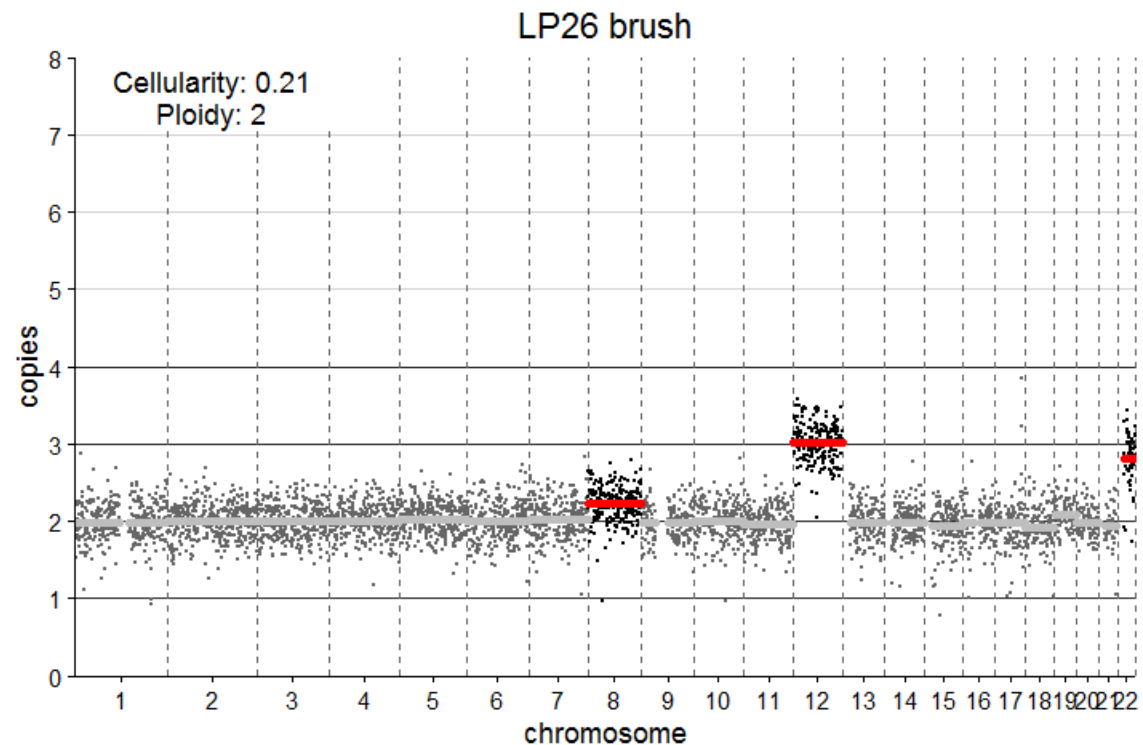
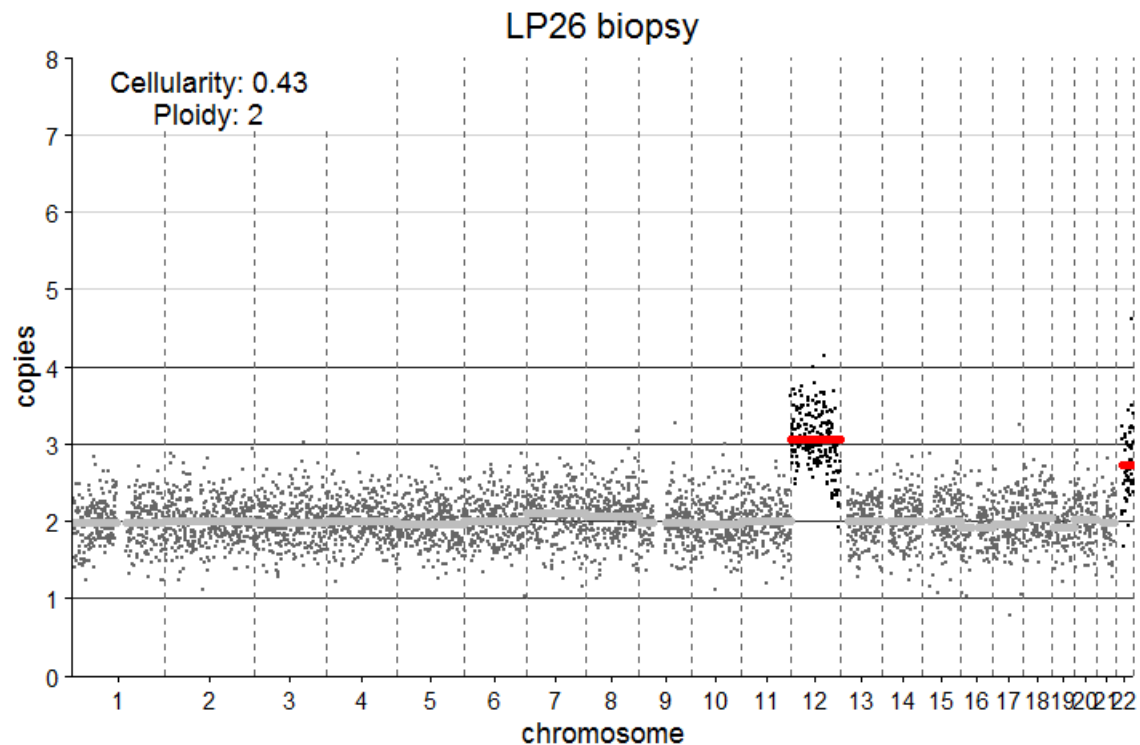
Sample	Chr	Pos	Gene	REF	ALT	read depth	ref reads	alt reads	VAF (%)	Change	Coverage			
											Sample	Mean	Max	Min
LP21-brush	chr9	139390823	NOTCH1	AAT	A	366	331	35	9.6	p.Ile2456fs	LP21-biopsy	1863	3849	298
LP21-brush	chr9	139412297	NOTCH1	C	T	378	341	37	9.8	p.Glu450Lys	LP21-brush	387	1001	89



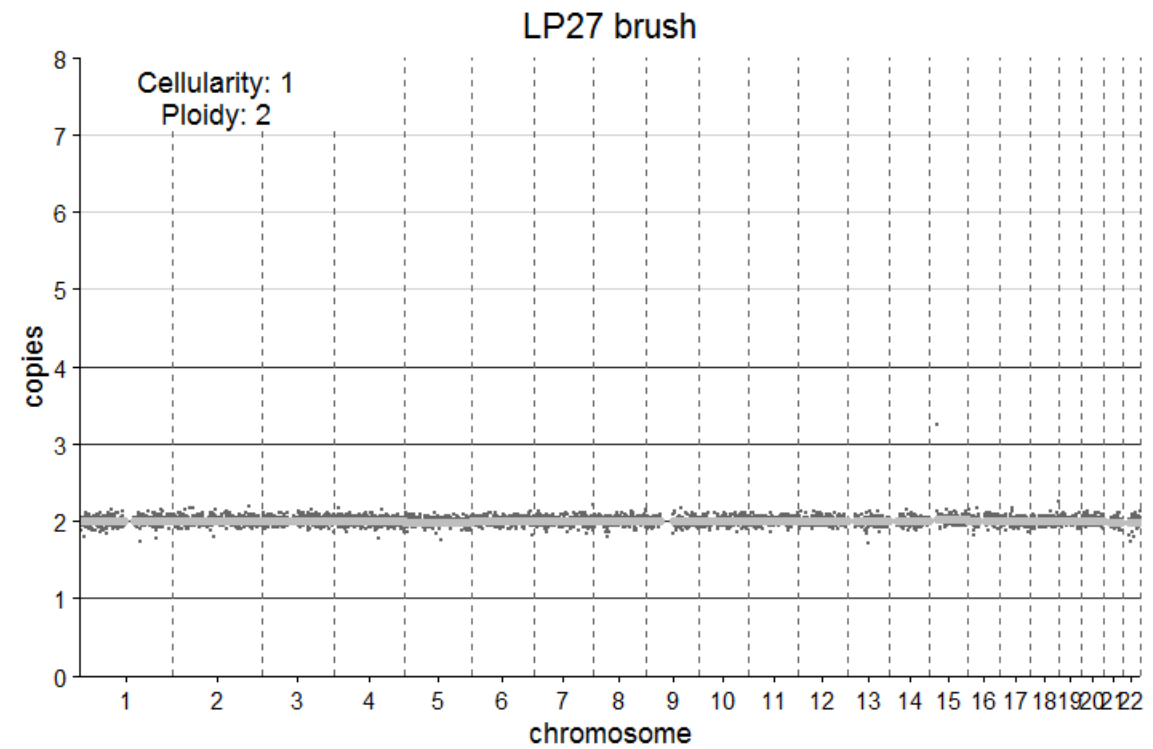
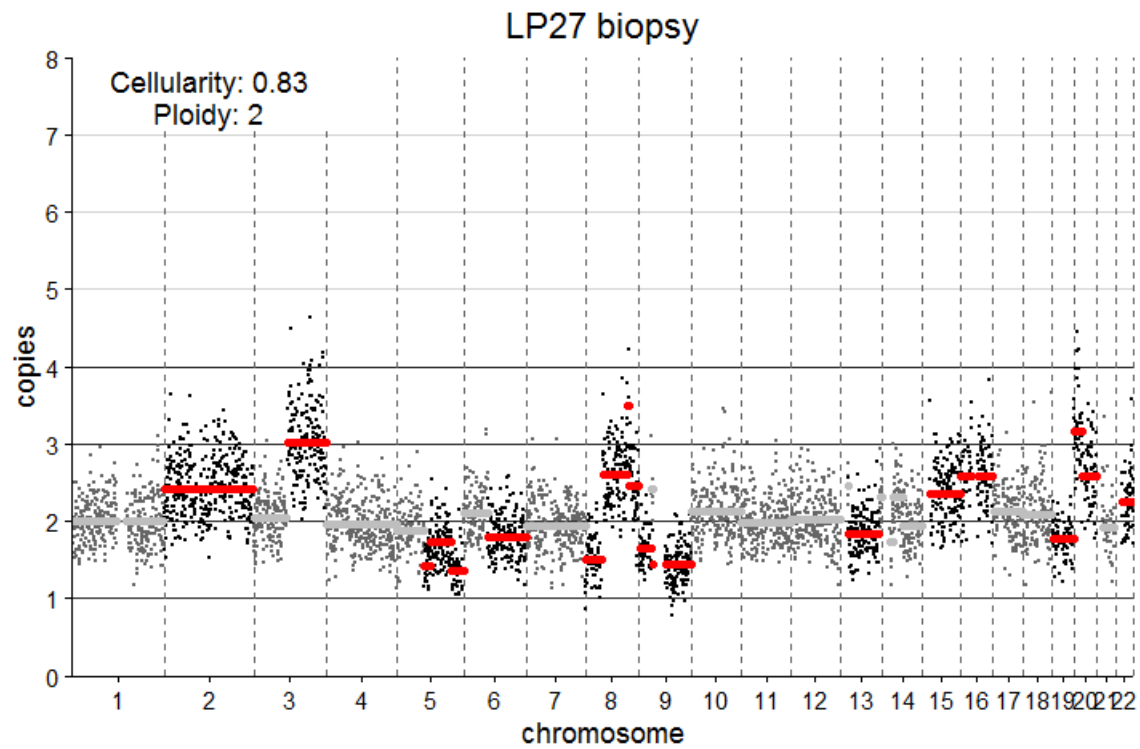
Sample	Coverage		
	Mean	Max	Min
LP22-biopsy	559	1133	162
LP22-brush	1622	2432	314



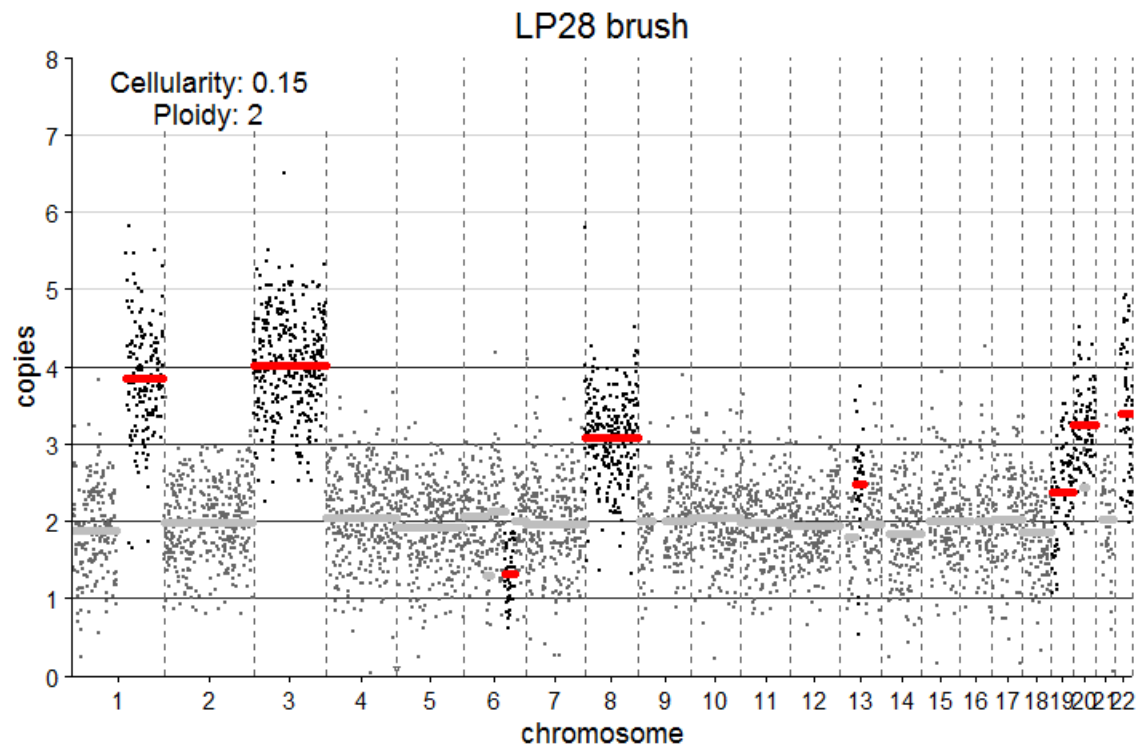
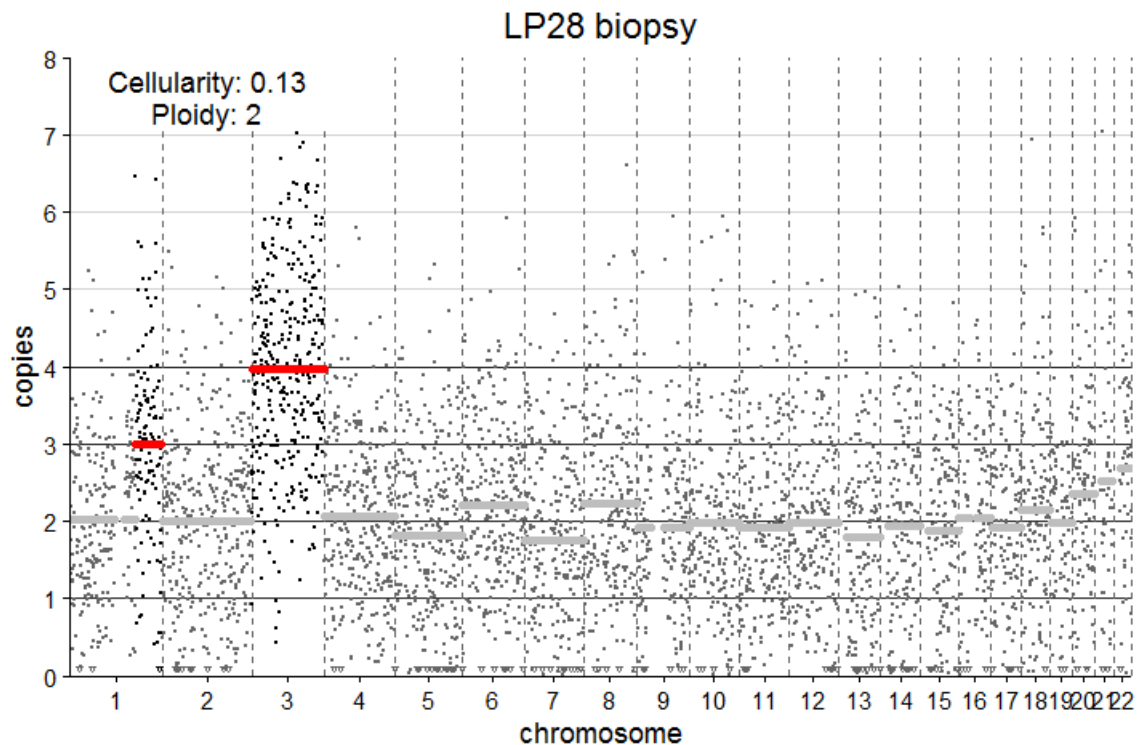
Sample	Chr	Pos	Gene	REF	ALT	read depth	ref reads	alt reads	VAF (%)	Change	Coverage			
											Sample	Mean	Max	Min
LP25-biopsy	chr2	202136259	CASP8	CAGA	C	671	519	151	22.54	p.Glu170del				
LP25-biopsy	chr4	187540425	FAT1	C	CA	729	546	182	25	p.Val2439fs	LP25-biopsy	1065	2139	202
LP25-biopsy	chr4	187542304	FAT1	AAC	A	761	583	178	23.39	p.Val1812fs				
LP25-biopsy	chr9	139417472	NOTCH1	T	C	1808	1449	359	20	p.His191Arg	LP25-brush	1716	3147	328
LP25-biopsy	chr11	534289	HRAS	C	T	1361	972	389	29	p.Gly12Ser				
LP25-brush	chr9	202136259	CASP8	CAGA	C	1675	1524	150	9.0	p.Glu170del				
LP25-brush	chr11	187540425	FAT1	C	CA	1820	1623	193	10.6	p.Val2439fs				
LP25-brush	chr2	187542304	FAT1	AAC	A	1794	1587	208	11.6	p.Val1812fs				
LP25-brush	chr9	139417472	NOTCH1	T	C	1804	1642	160	9	p.His191Arg				
LP25-brush	chr11	534289	HRAS	C	T	1492	1352	138	9	p.Gly12Ser				



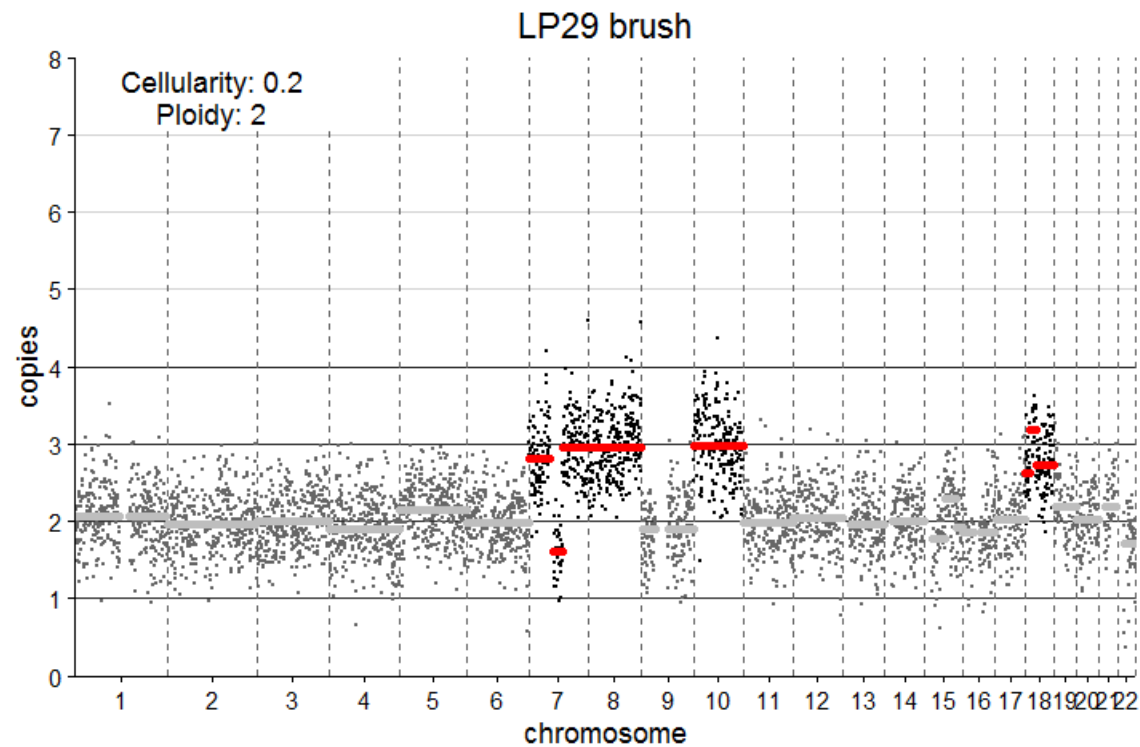
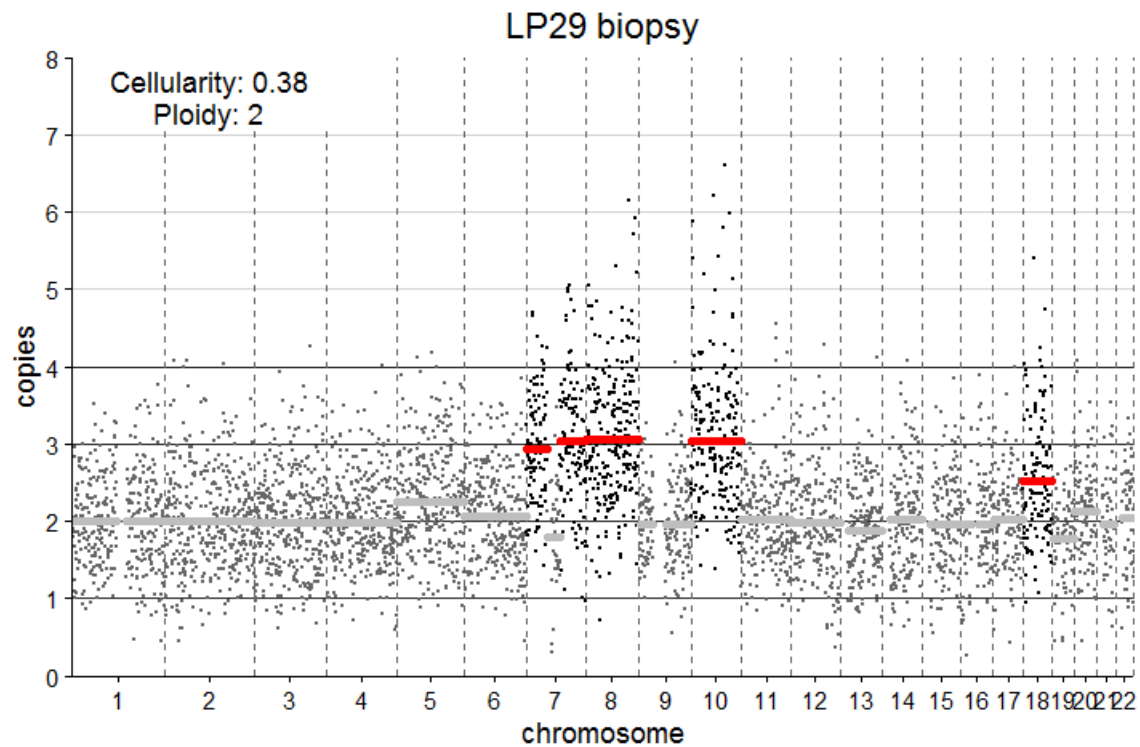
Sample	Chr	Pos	Gene	REF	ALT	read depth	ref reads	alt reads	VAF (%)	Change	Coverage			
											Sample	Mean	Max	Min
LP26-biopsy	chr3	178936091	PIK3CA	G	A	661	527	133	20	p.Glu545Lys				
LP26-biopsy	chr9	21968242	CDKN2A	C	T	772	398	374	48	.	LP26-biopsy	1614	4317	264
LP26-biopsy	chr9	139410521	NOTCH1	G	C	1041	971	69	6.6	p.Tyr527*				
LP26-biopsy	chr9	139412303	NOTCH1	G	A	1493	1060	431	29	p.Arg448*	LP26-brush	2914	5062	585
LP26-biopsy	chr17	7578452	TP53	T..C	T	1762	1535	227	13	p.Val157_Ala159del				
LP26-brush	chr3	178936091	PIK3CA	G	A	1807	1623	184	10	p.Glu545Lys				
LP26-brush	chr9	21968242	CDKN2A	C	T	1914	1456	458	24	.				
LP26-brush	chr9	139410521	NOTCH1	G	C	1657	1490	165	10	p.Tyr527*				
LP26-brush	chr9	139412303	NOTCH1	G	A	2174	1907	267	12	p.Arg448*				
LP26-brush	chr17	7578452	TP53	T..C	T	2838	2547	290	10	p.Val157_Ala159del				



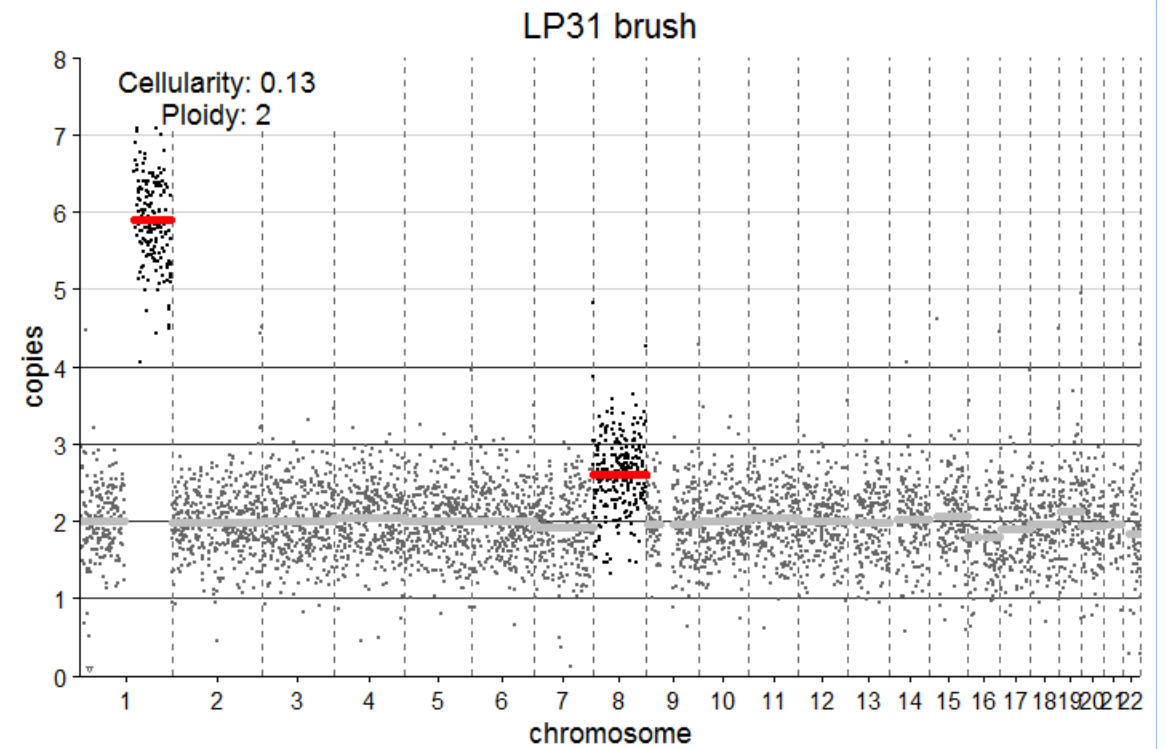
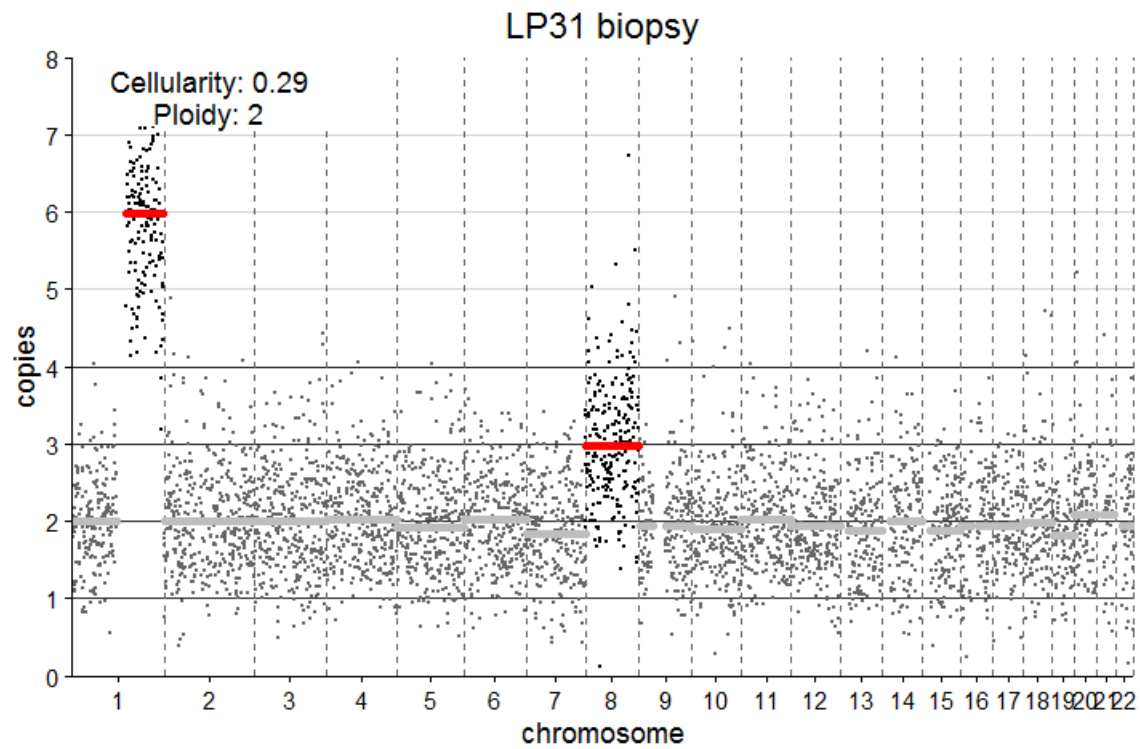
Sample	Chr	Pos	Gene	REF	ALT	read depth	ref reads	alt reads	VAF (%)	Change	Coverage			
											Sample	Mean	Max	Min
LP27-biopsy	chr4	187584747	FAT1	G	A	392	363	28	7.2	p.Arg1096*				
LP27-biopsy	chr17	7577081	TP53	T	G	674	122	552	82	p.Glu286Ala	LP27-biopsy	535	1158	83
LP27-brush	chr17	7577081	TP53	T	G	970	936	34	3.5	p.Glu286Ala	LP27-brush	1159	2681	367



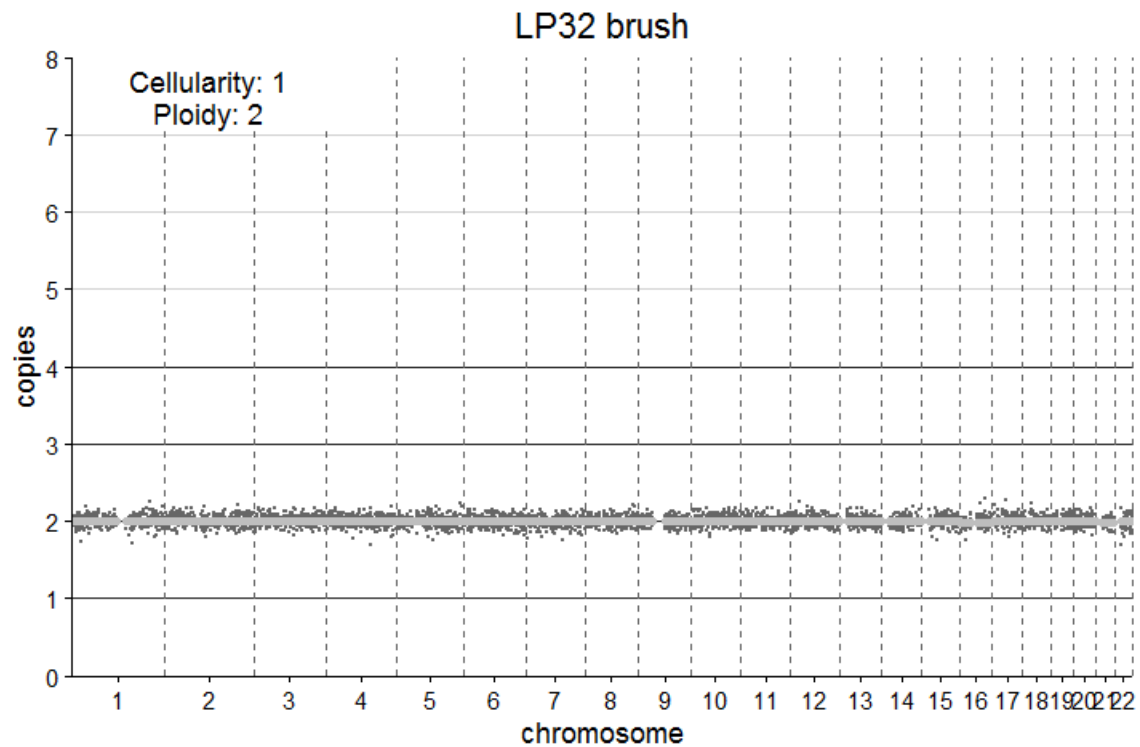
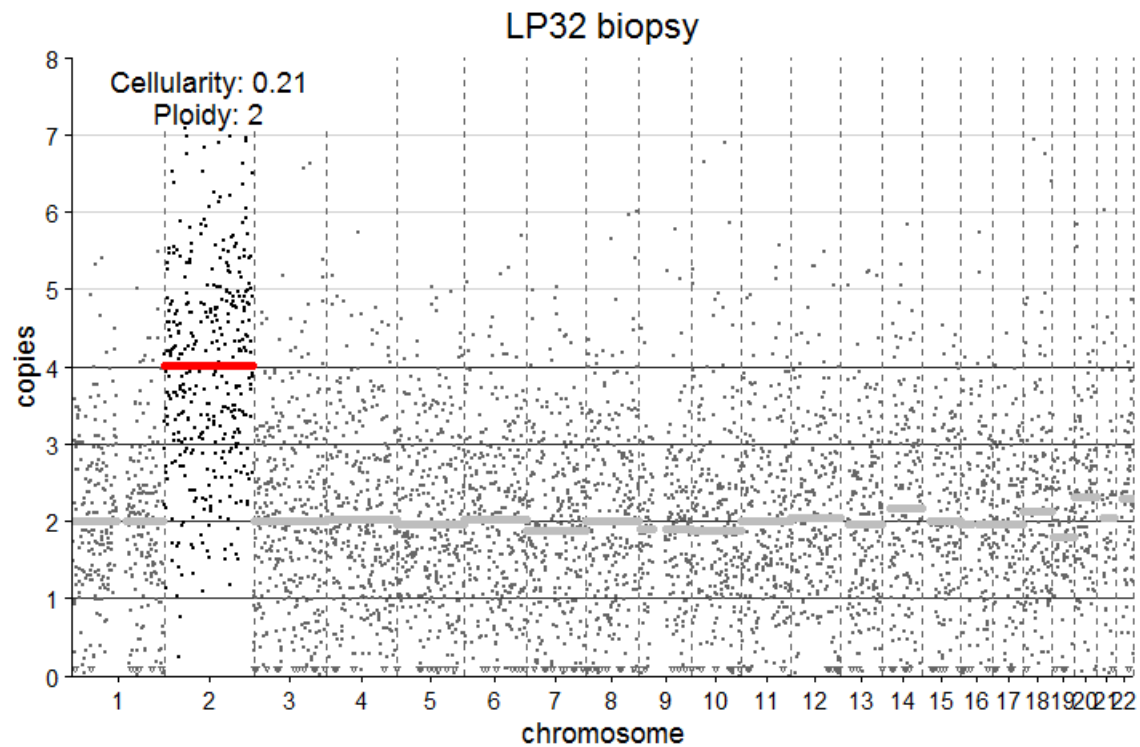
Sample	Chr	Pos	Gene	REF	ALT	read depth	ref reads	alt reads	VAF (%)	Change	Coverage			
											Sample	Mean	Max	Min
LP28-brush	chr4	187525711	FAT1	GC	G	643	595	48	7.5	p.Gly3456fs	LP28-biopsy	171	1158	6
LP28-brush	chr9	139413214	NOTCH1	C	T	788	750	38	4.8	p.Gly310Arg	LP28-brush	787	1836	170
LP28-brush	chr17	7578260	TP53	C	T	800	763	37	4.6	p.Val197Met				
LP28-brush	chr17	7578271	TP53	T	C	792	772	20	2.5	p.His193Arg				



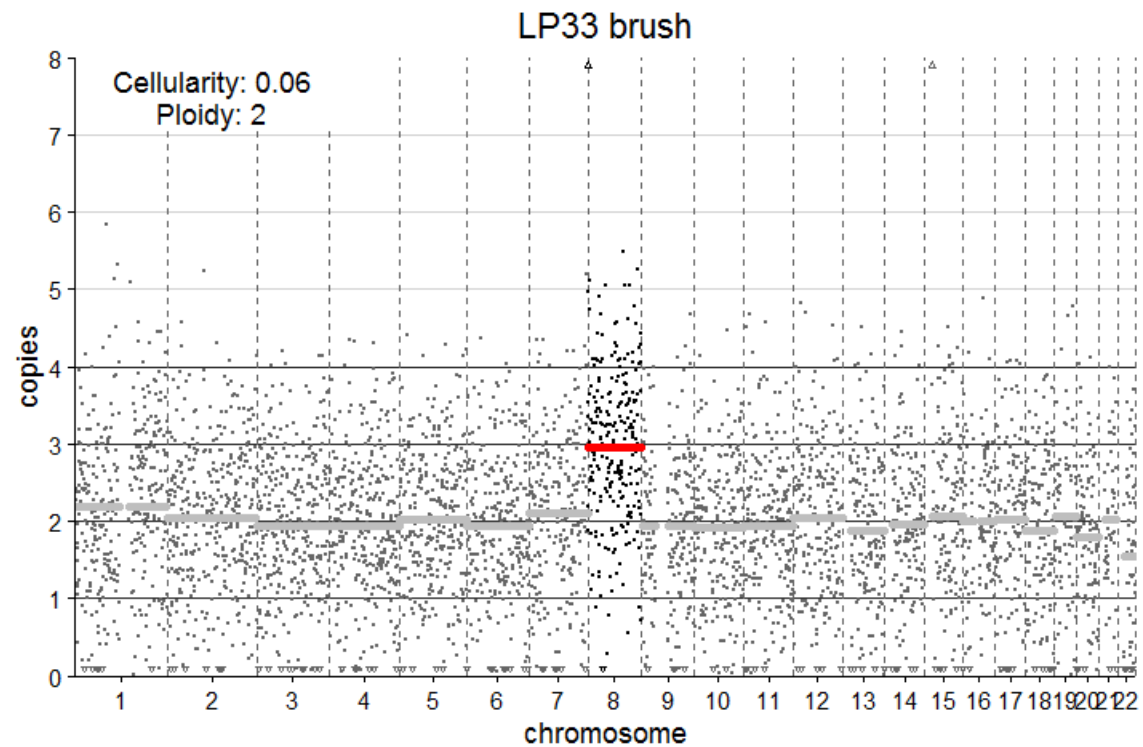
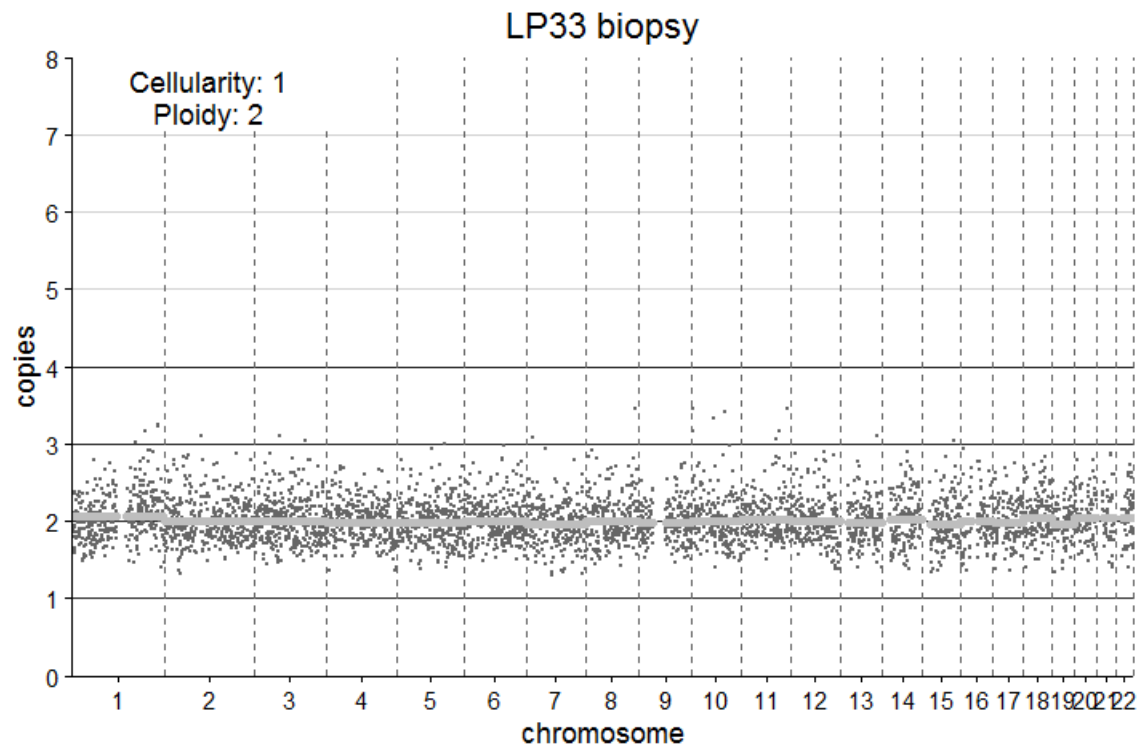
Sample	Chr	Pos	Gene	REF	ALT	read depth	ref reads	alt reads	VAF (%)	Change	Coverage			
											Sample	Mean	Max	Min
LP29-biopsy	chr3	178952085	PIK3CA	A	T	51	38	13	25.49	p.His1047Leu				
LP29-biopsy	chr12	49446102	KMT2D	T	G	136	127	9	6.62	p.Glu455Ala	LP29-biopsy	105	539	5
LP29-brush	chr3	178952085	PIK3CA	A	T	1876	1703	173	9.2	p.His1047Leu	LP29-brush	2644	3604	342



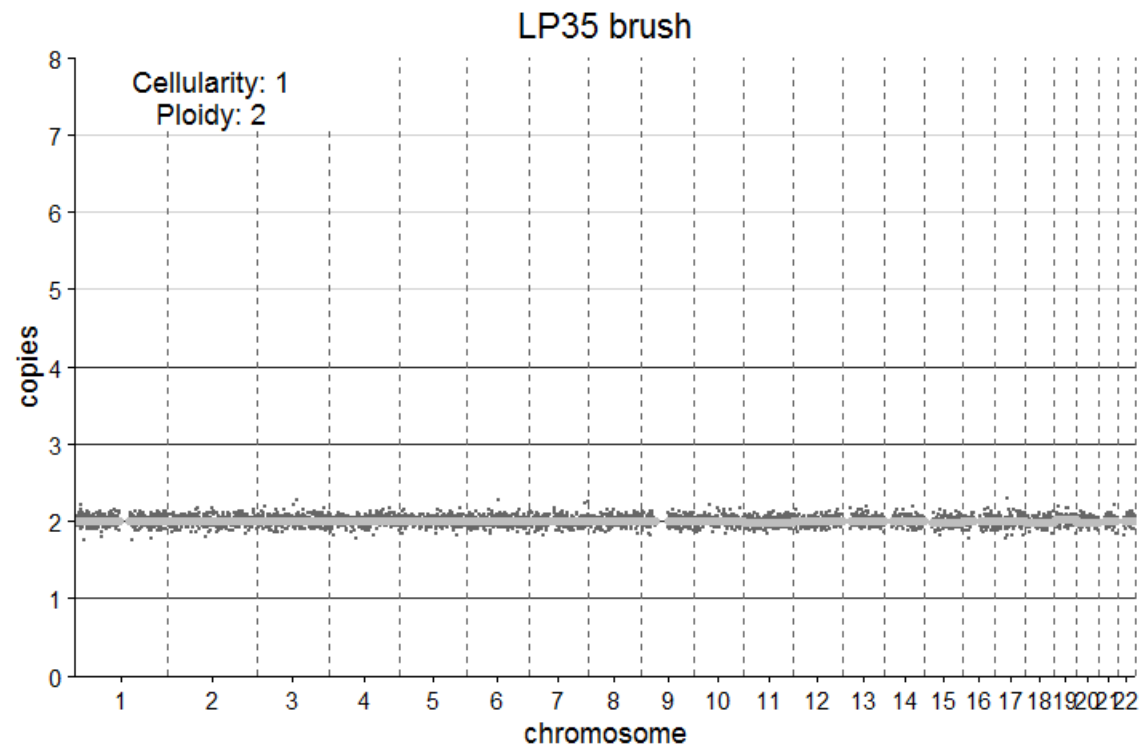
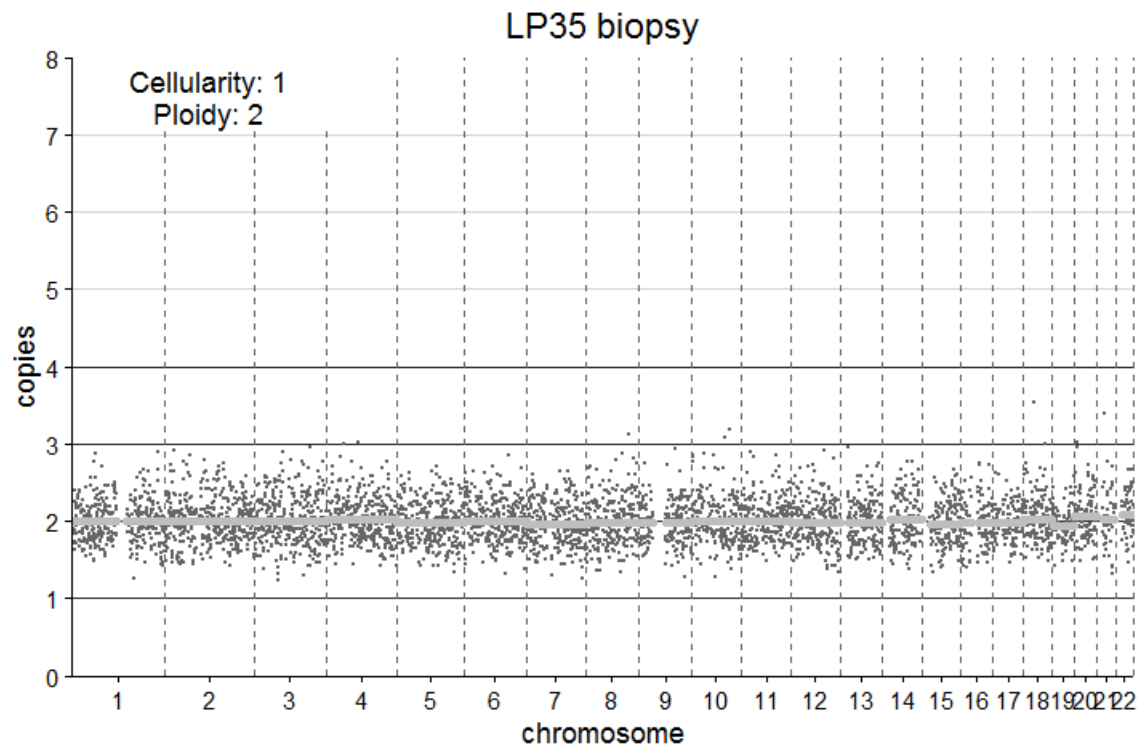
Sample	Chr	Pos	Gene	REF	ALT	read depth	ref reads	alt reads	VAF (%)	Change	Coverage			
											Sample	Mean	Max	Min
LP31-biopsy	chr3	178952085	PIK3CA	A	G	79	64	15	18.99	p.His1047Arg				
LP31-biopsy	chr9	21971114	CDKN2A	C	T	115	78	37	32.17	p.Val82Met	LP31-biopsy	133	630	12
LP31-biopsy	chr17	7577587	TP53	T	A	144	136	8	5.56	p.Ile232Phe				
LP31-brush	chr3	178952085	PIK3CA	A	G	3433	3297	136	4.0	p.His1047Arg				
LP31-brush	chr9	21971114	CDKN2A	C	T	2596	2313	282	11	p.Val82Met				
LP31-brush	chr17	7577587	TP53	T	A	3511	3377	133	3.8	p.Ile232Phe				
LP31-brush	chr17	7579313	TP53	G	A	2588	2517	71	2.7	p.Thr125Met	LP31-brush	3436	4780	538



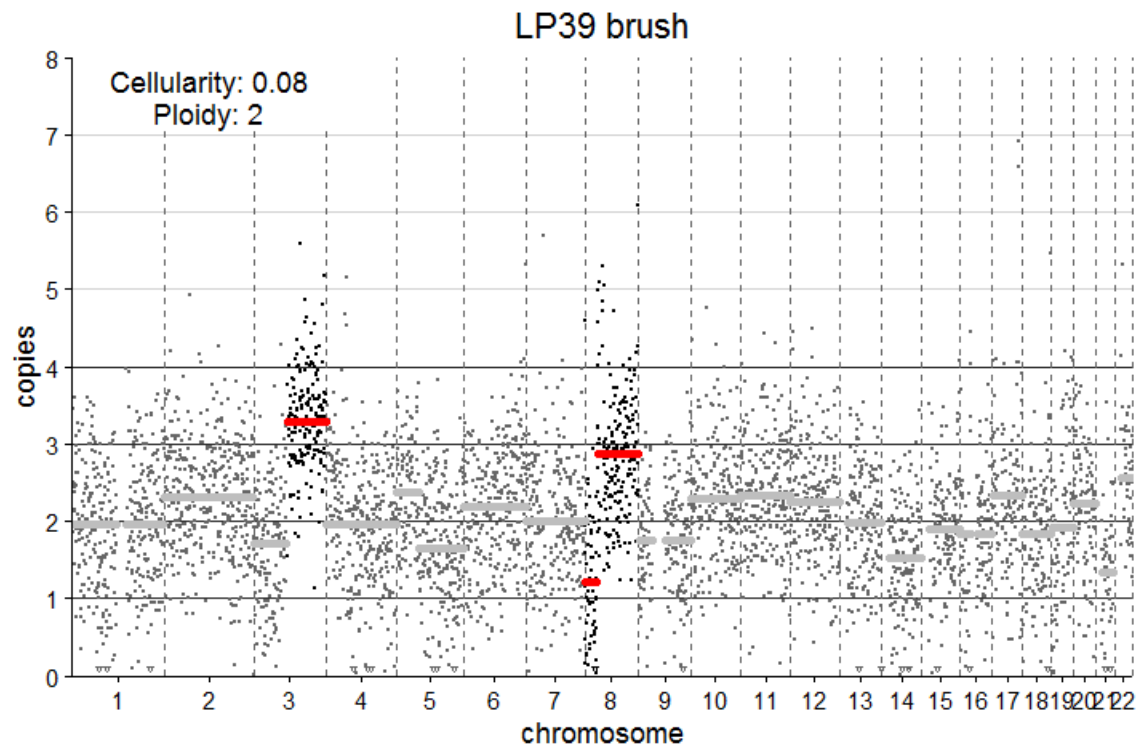
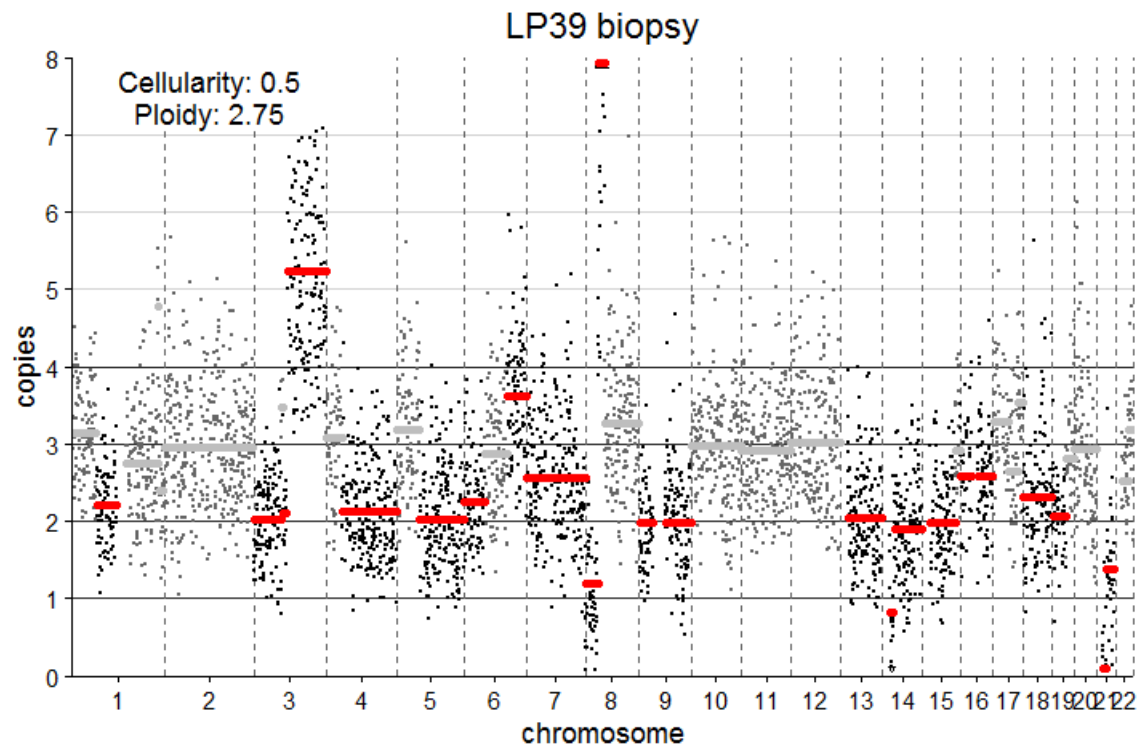
Sample	Chr	Pos	Gene	REF	ALT	read depth	ref reads	alt reads	VAF (%)	Change	Coverage			
											Sample	Mean	Max	Min
LP32-biopsy	chr10	89720741	PTEN	C	A	87	80	7	8.05	p.Gln298Lys				
LP32-biopsy	chr10	89720754	PTEN	G	A	87	78	8	9.3	p.Ser302Asn	LP32-biopsy	102	484	9
LP32-biopsy	chr12	49426019	KMT2D	G	A	93	87	5	5.43	p.Gln4157*				
LP32-biopsy	chr12	49445146	KMT2D	G	C	113	107	6	5.31	p.Pro774Ala	LP32-brush	3082	3954	411



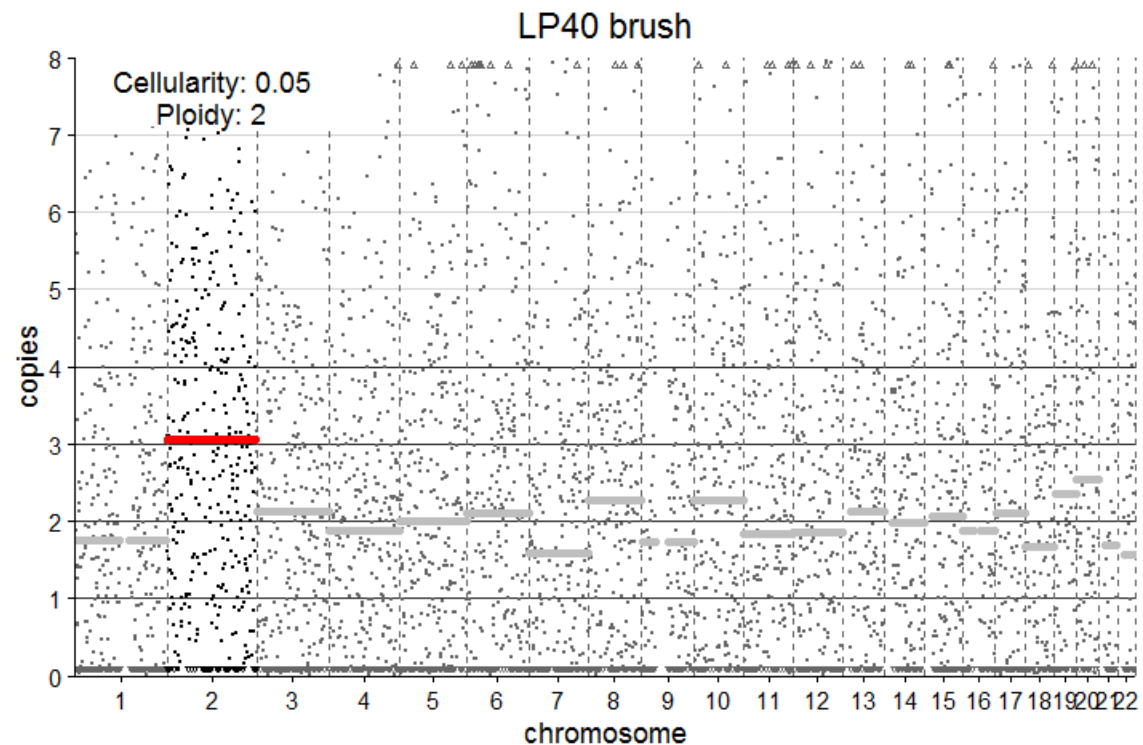
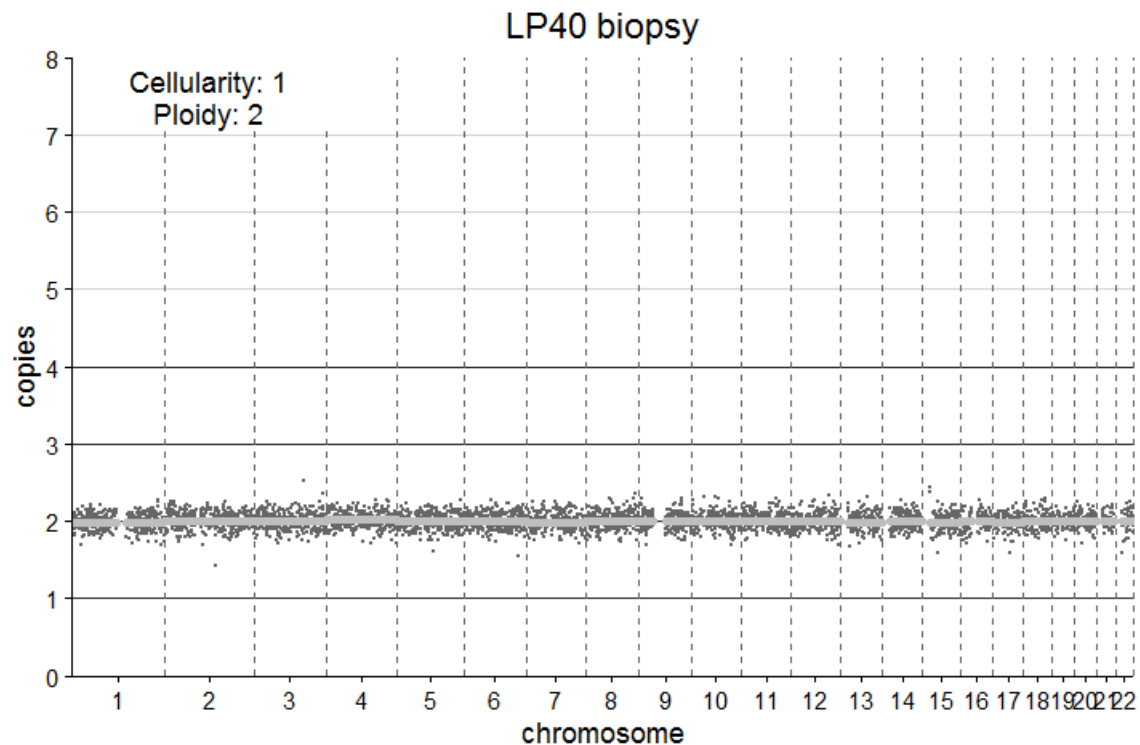
Sample	Chr	Pos	Gene	REF	ALT	read depth	ref reads	alt reads	VAF (%)	Change	Coverage			
											Sample	Mean	Max	Min
LP33-biopsy	chr3	178917603	PIK3CA	C	T	74	69	5	6.76	p.His160Tyr				
LP33-biopsy	chr4	187560922	FAT1	G	T	62	55	7	11.29	p.Thr119Lys	LP33-biopsy	121	590	5
LP33-biopsy	chr5	176639196	NSD1	G	A	156	146	10	6.41	p.Ala1266Thr				
LP33-biopsy	chr9	139399952	NOTCH1	G	A	104	98	6	5.77	p.Gln1466*	LP33-brush	1941	3341	413
LP33-biopsy	chr17	7573945	TP53	C	T	65	60	5	7.69	p.Gly361Glu				
LP33-brush	chr9	139412282	NOTCH1	C	A	2042	1961	79	3.9	p.Glu455*				



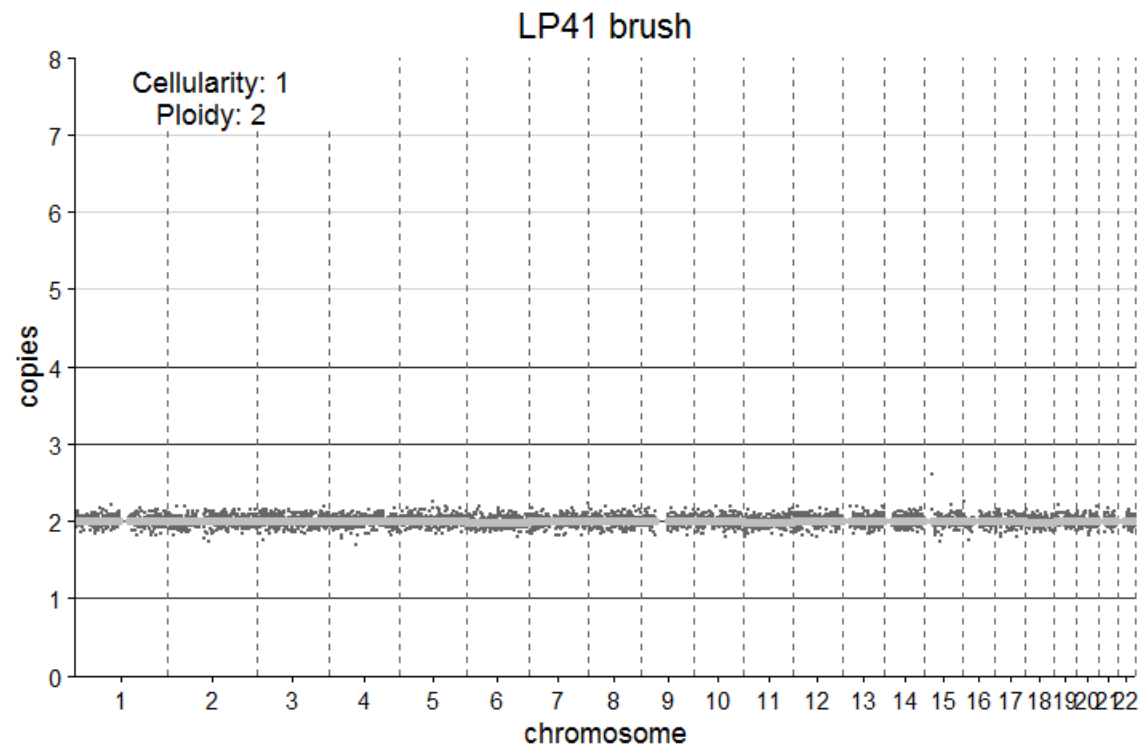
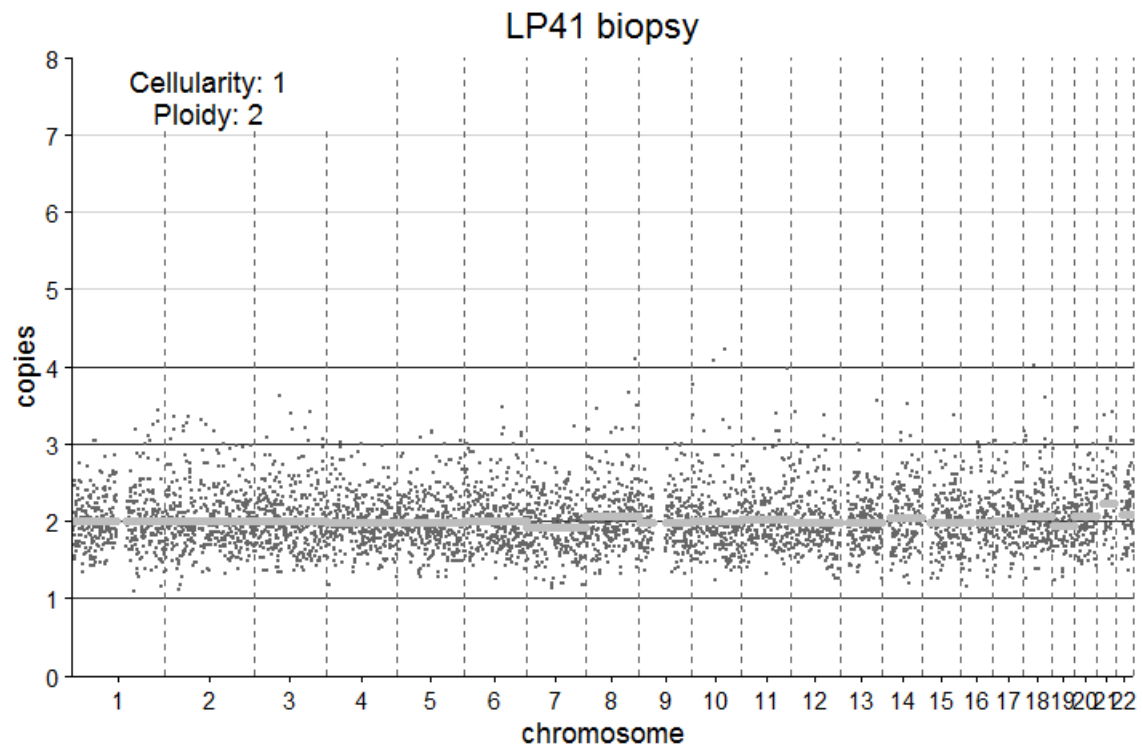
Sample	Coverage		
	Mean	Max	Min
LP35-biopsy	201	586	7
LP35-brush	1408	2437	320



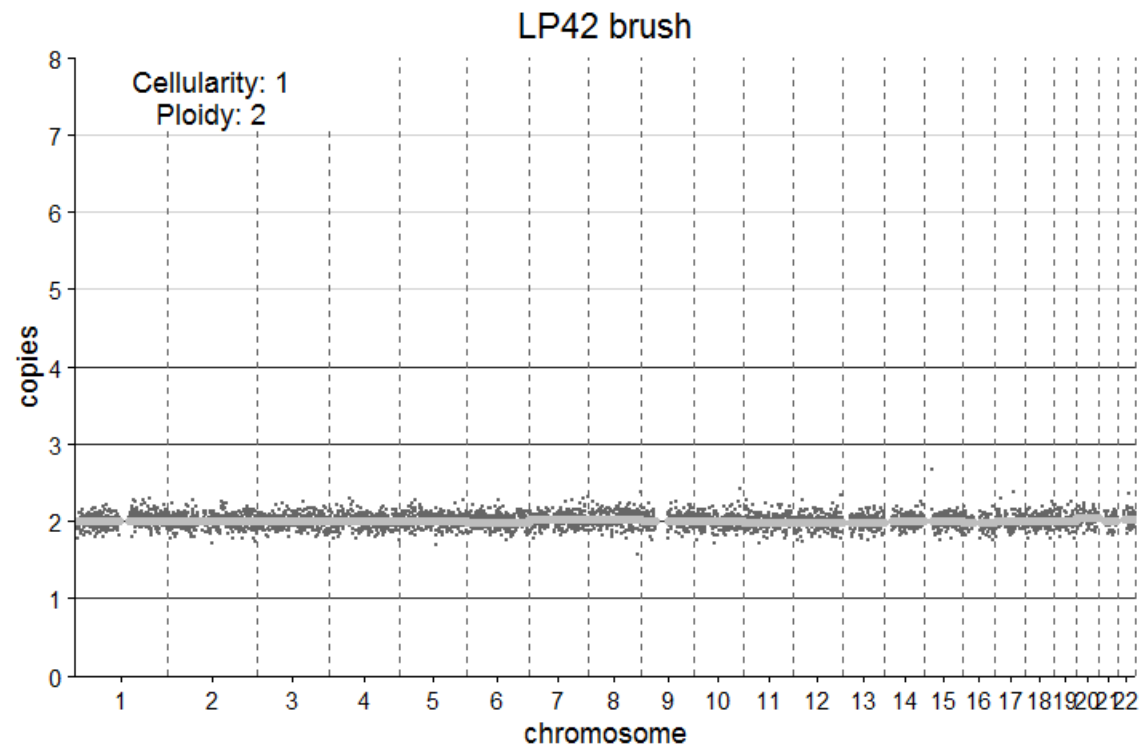
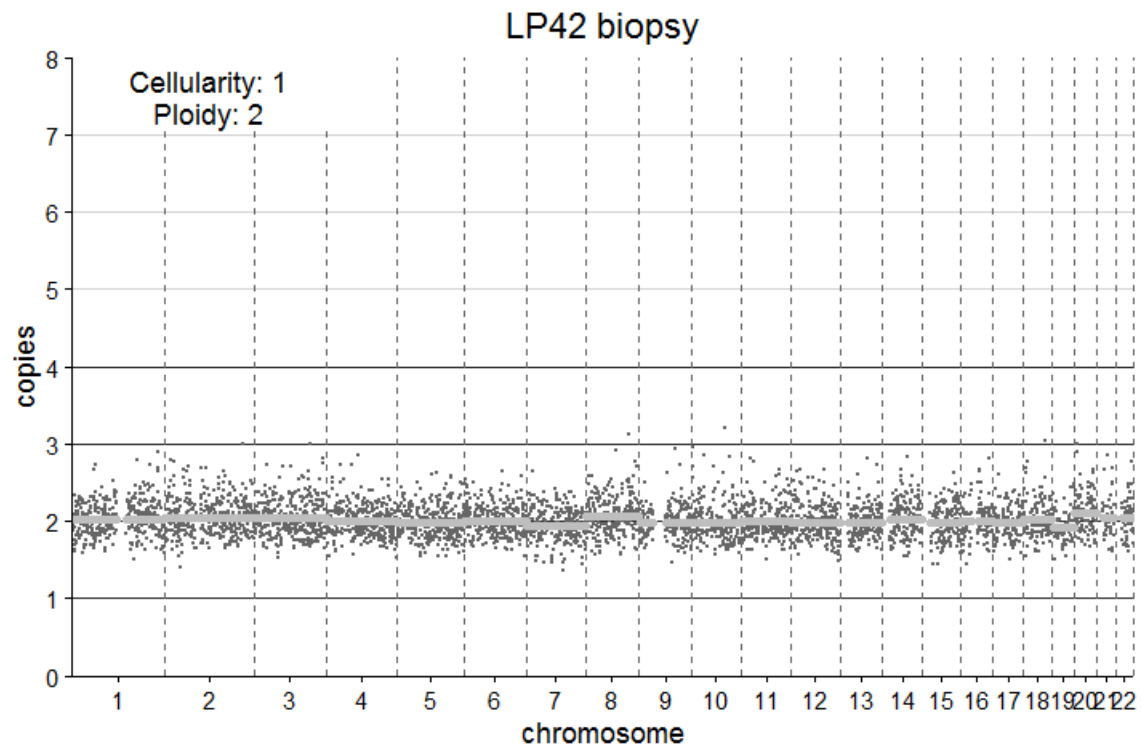
Sample	Chr	Pos	Gene	REF	ALT	read depth	ref reads	alt reads	VAF (%)	Change	Coverage			
											Sample	Mean	Max	Min
LP39-biopsy	chr9	21974726	CDKN2A	G..A	G	230	143	87	37.83	p.Val28_Glu33del	LP39-biopsy	257	952	17
LP39-biopsy	chr9	21968242	CDKN2A	C	T	226	76	150	66.37	.	LP39-biopsy	257	952	17
LP39-biopsy	chr17	7577509	TP53	C	T	256	59	197	76.95	p.Glu258Lys	LP39-biopsy	257	952	17
LP39-brush	chr12	49445392	KMT2D	G	T	54	39	15	27.78	p.Pro692Thr	LP39-brush	62	154	1



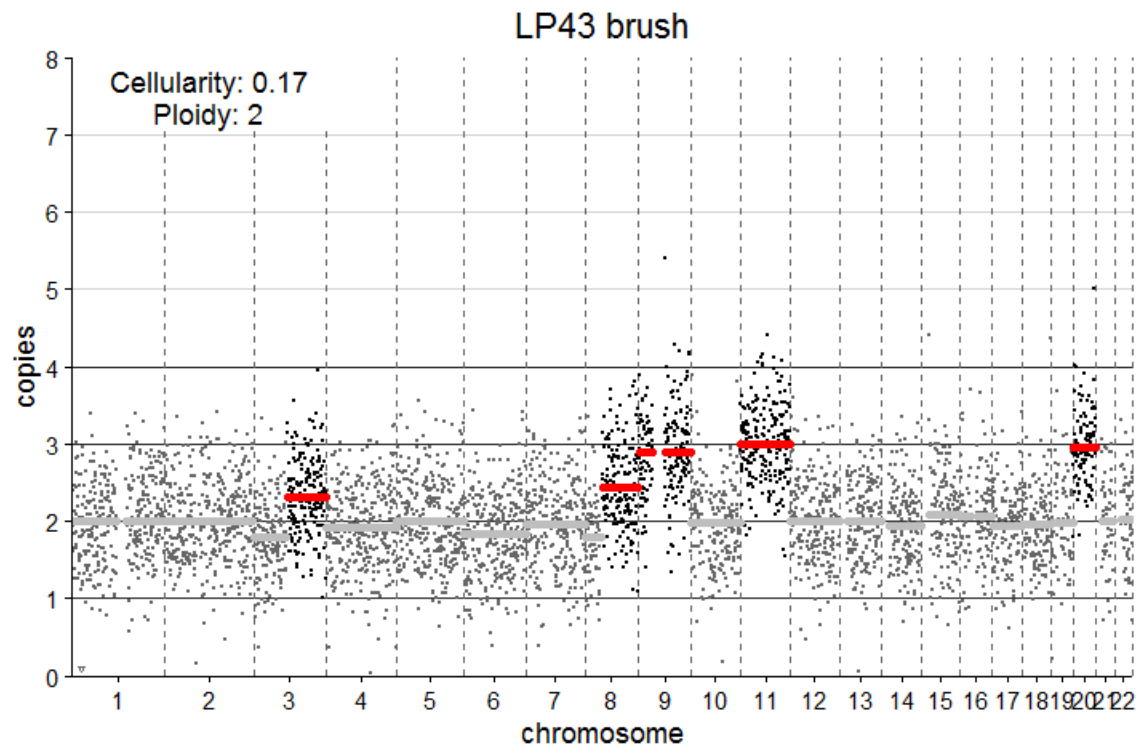
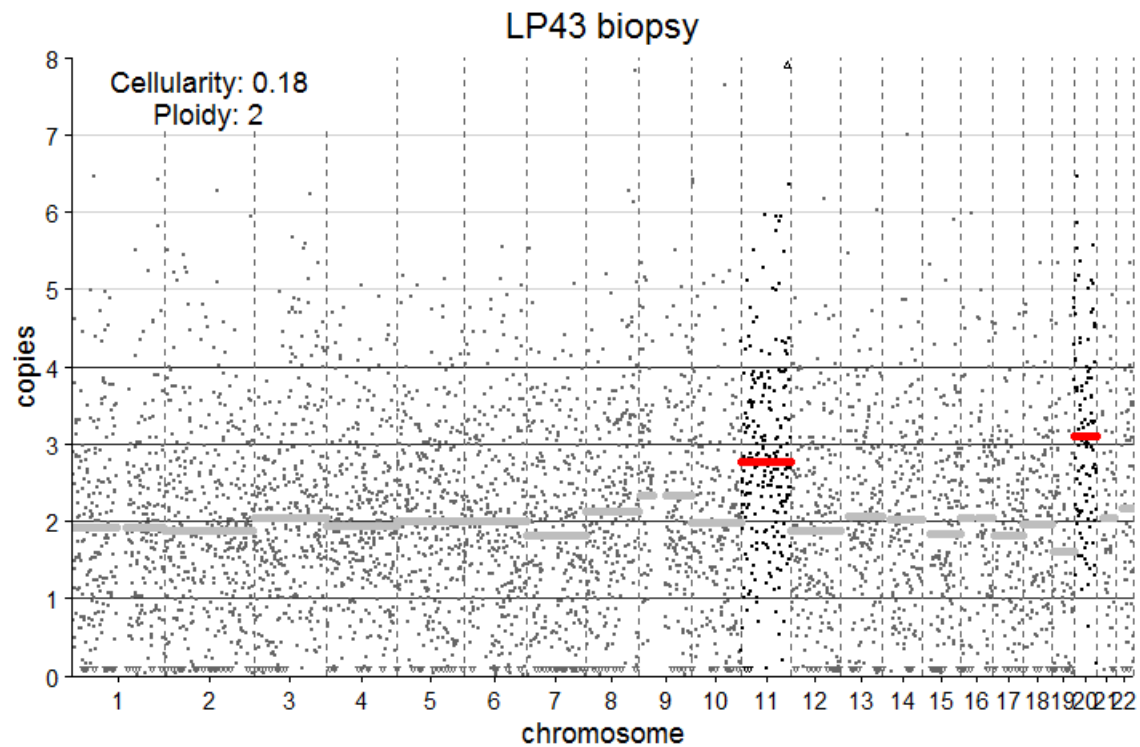
Sample	Chr	Pos	Gene	REF	ALT	read depth	ref reads	alt reads	VAF (%)	Change	Coverage			
											Sample	Mean	Max	Min
LP40-biopsy	chr2	202149751	CASP8	C	T	417	279	137	32.93	p.Gln398*	LP40-biopsy	511	2272	5
LP40-biopsy	chr3	178936082	PIK3CA	G	A	274	90	184	67.15	p.Glu542Lys				
LP40-biopsy	chr4	153251907	FBXW7	G	A	300	232	67	22.41	p.Arg367*				
LP40-biopsy	chr9	139412375	NOTCH1	C	T	362	237	125	34.53	p.Glu424Lys				
LP40-biopsy	chr11	534289	HRAS	C	T	396	244	152	38.38	p.Gly12Ser				
LP40-brush	chr2	202149751	CASP8	C	T	266	203	63	23.68	p.Gln398*				
LP40-brush	chr3	178936082	PIK3CA	G	A	274	220	54	19.71	p.Glu542Lys				
LP40-brush	chr3	178936091	PIK3CA	G	A	279	260	19	6.81	p.Glu545Lys				
LP40-brush	chr4	153251907	FBXW7	G	A	262	253	9	3.44	p.Arg367*				
LP40-brush	chr4	187530351	FAT1	GA	G	225	208	17	7.56	p.Leu3397fs				
LP40-brush	chr4	187557972	FAT1	G	A	236	225	11	4.66	p.Gln1247*				
LP40-brush	chr9	139412375	NOTCH1	C	T	351	285	65	18.57	p.Glu424Lys				
LP40-brush	chr11	534289	HRAS	C	T	388	348	40	10.31	p.Gly12Ser				



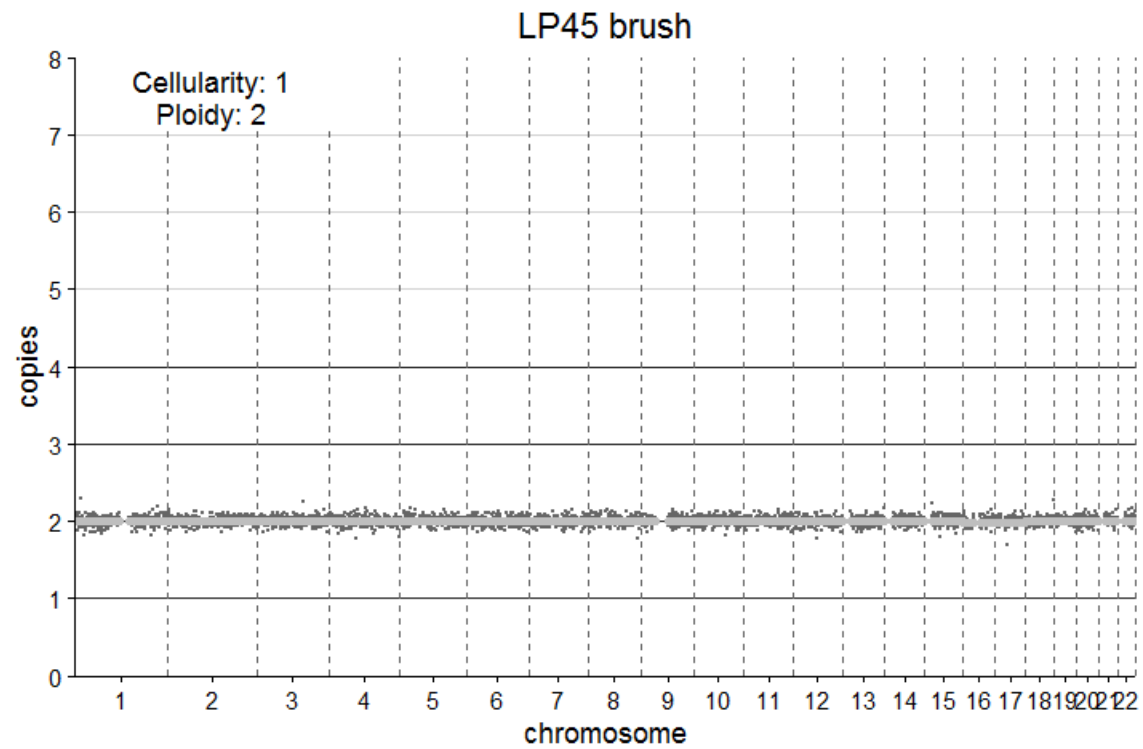
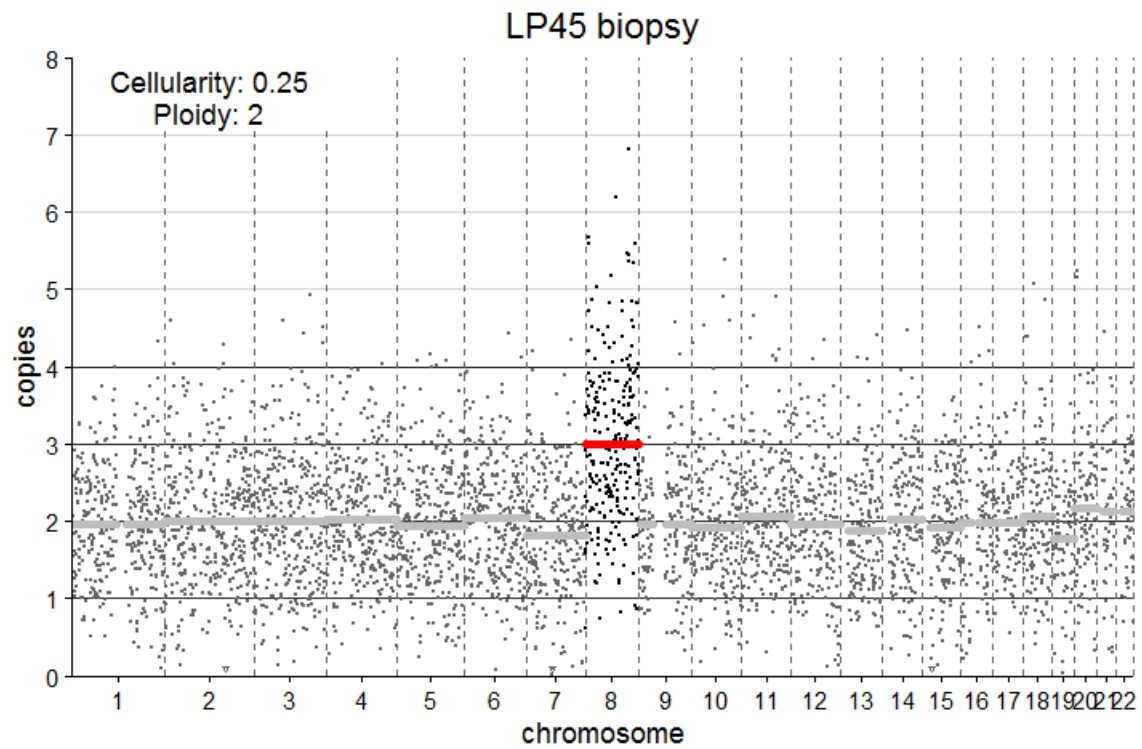
Sample	Coverage		
	Mean	Max	Min
LP41-biopsy	208	1228	13
LP41-brush	22	82	1



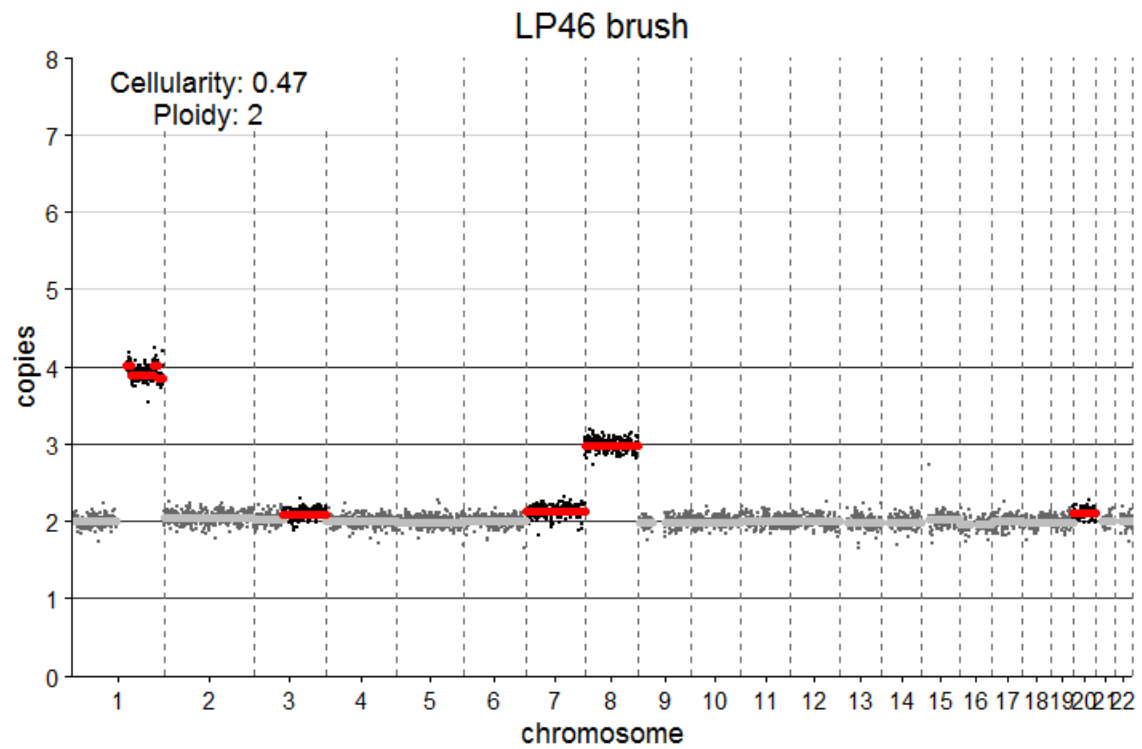
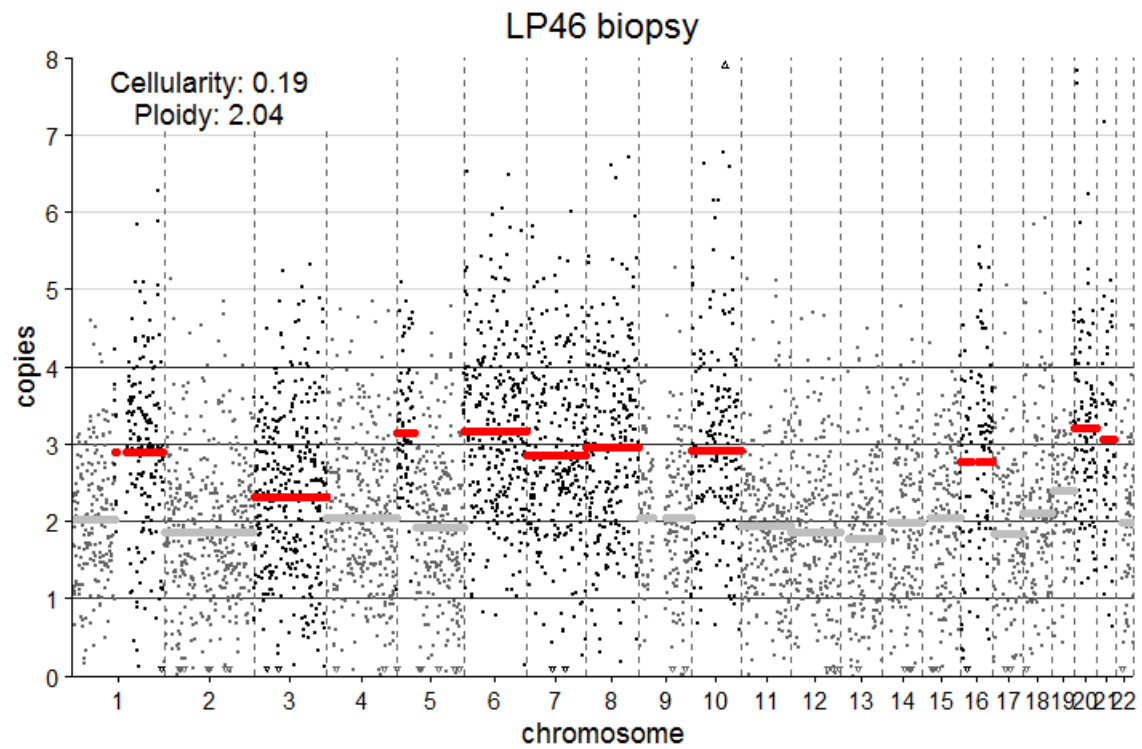
Sample	Coverage		
	Mean	Max	Min
LP42-biopsy	186	1197	6
LP42-brush	197	304	12



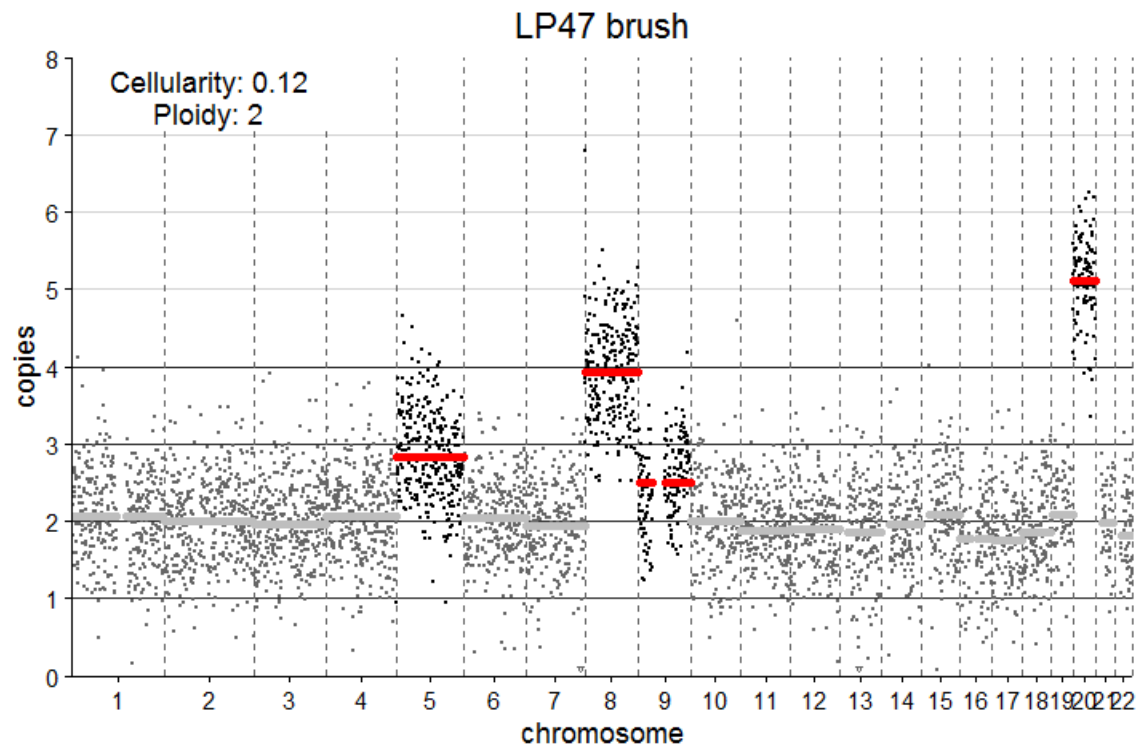
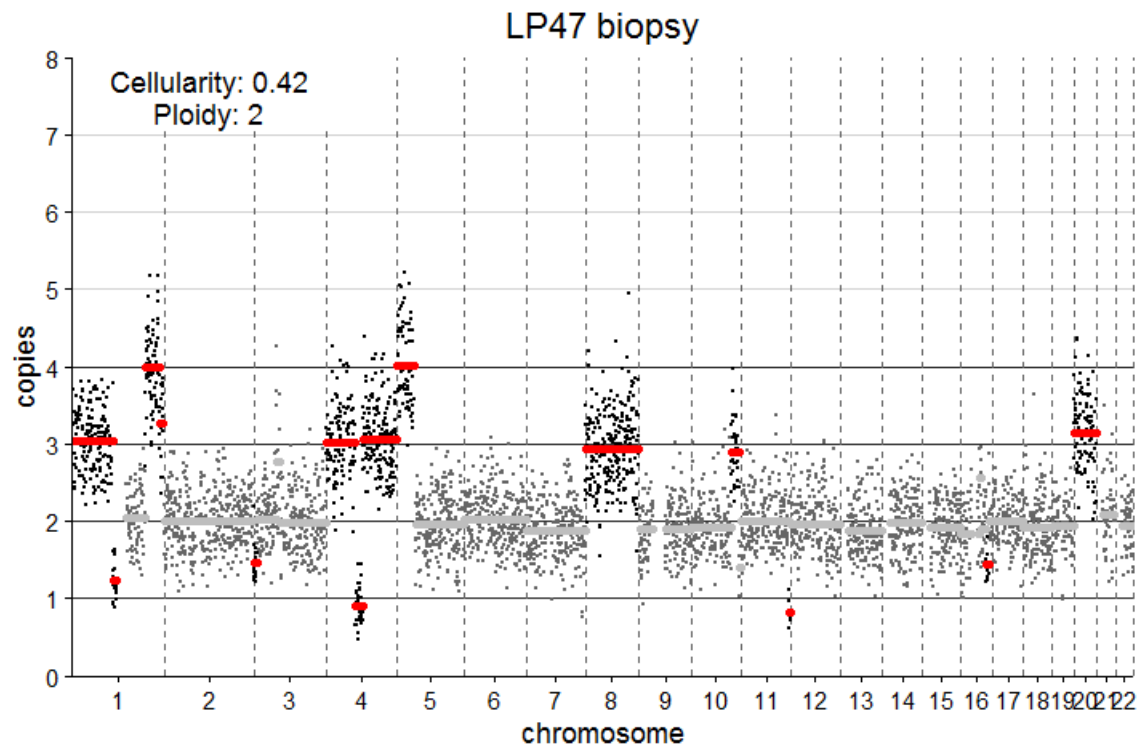
Sample	Chr	Pos	Gene	REF	ALT	read depth	ref reads	alt reads	VAF (%)	Change	Coverage			
											Sample	Mean	Max	Min
LP43-biopsy	chr17	7578402	TP53	G	T	220	198	21	9.59	p.Cys176*	LP43-biopsy	264	818	3
LP43-brush	chr17	7578402	TP53	G	T	40	33	7	17.5	p.Cys176*	LP43-brush	41	143	4



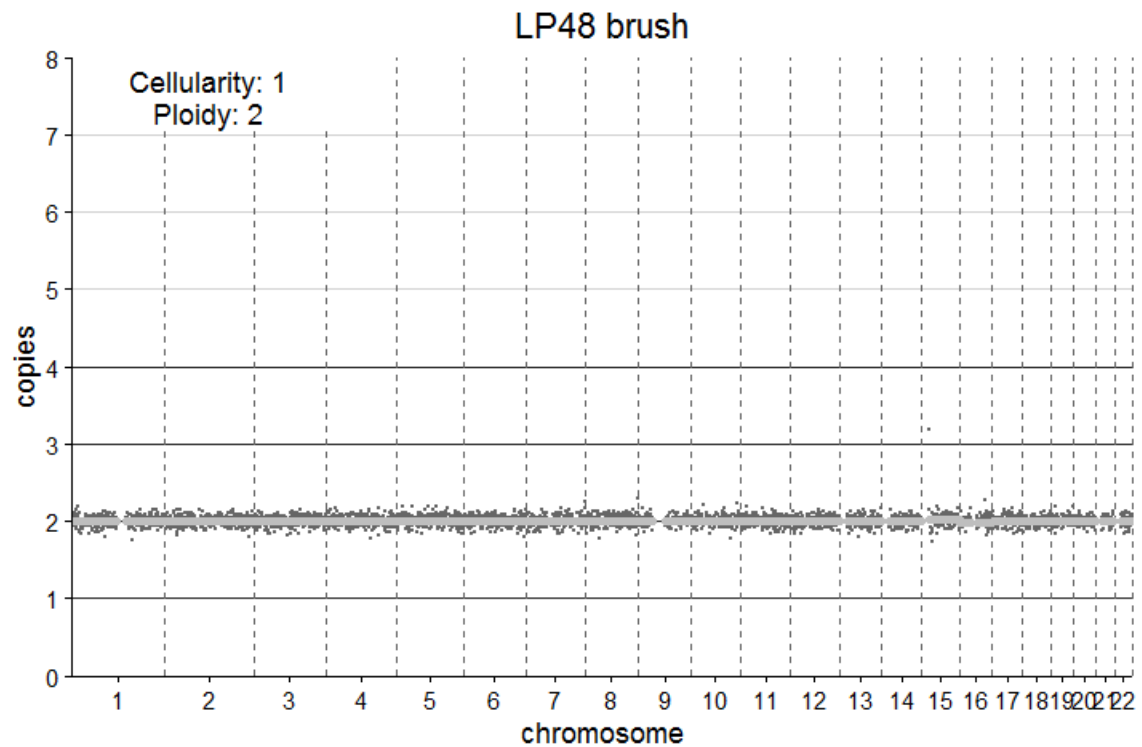
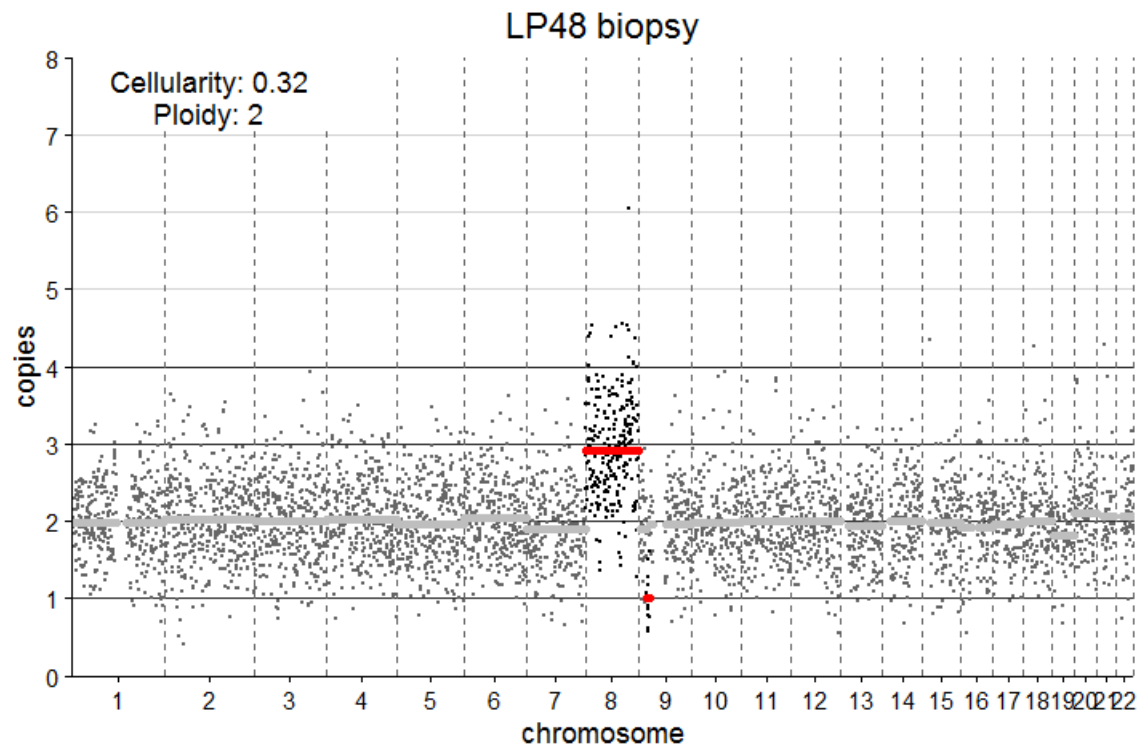
Sample	Coverage		
	Mean	Max	Min
LP45-biopsy	200	1051	2
LP45-brush	572	897	53



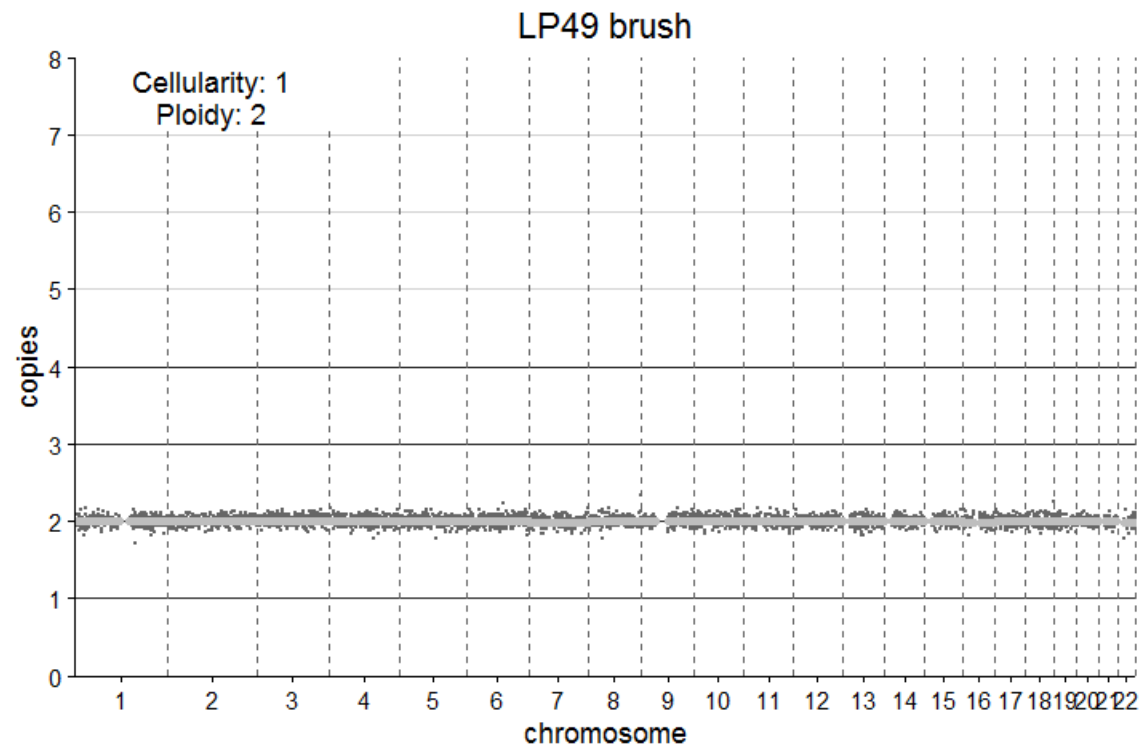
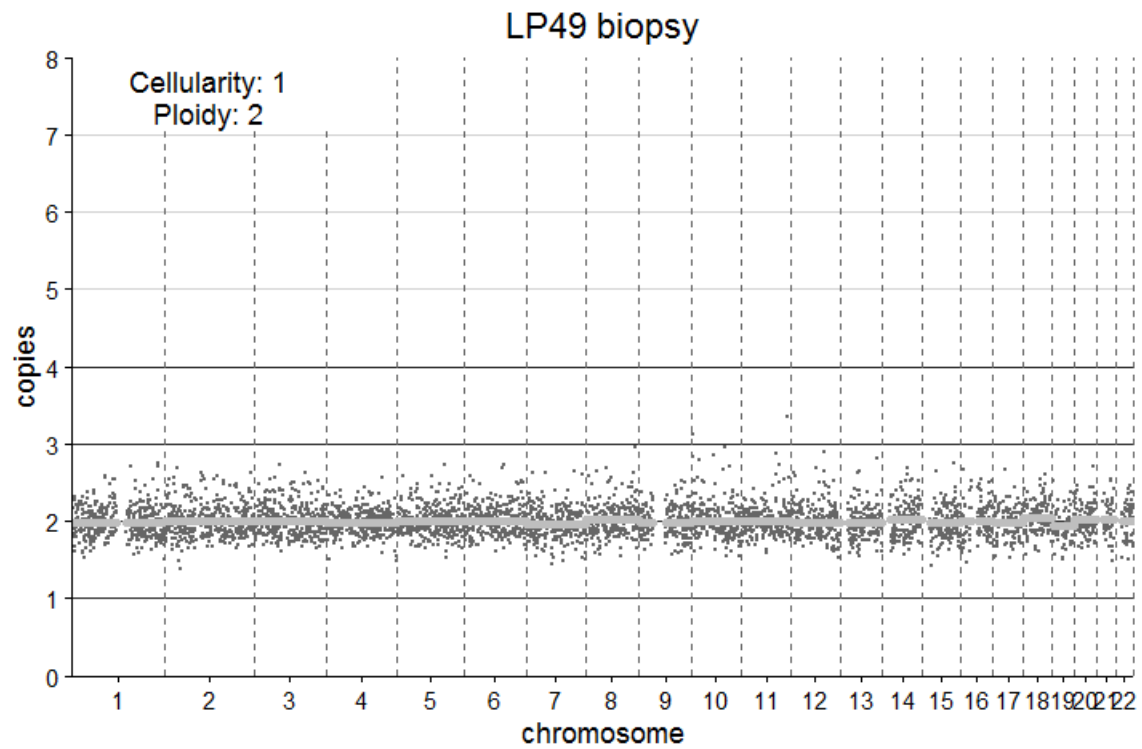
Sample	Coverage		
	Mean	Max	Min
LP46-biopsy	310	2566	20
LP46-brush	517	991	39



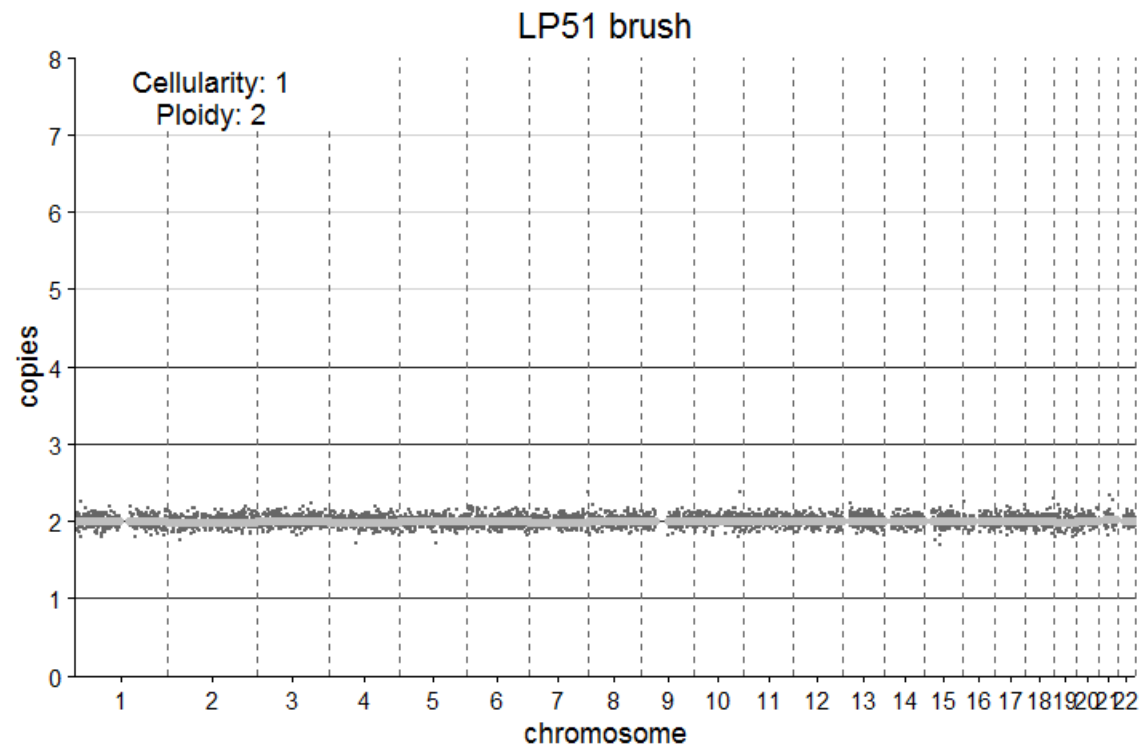
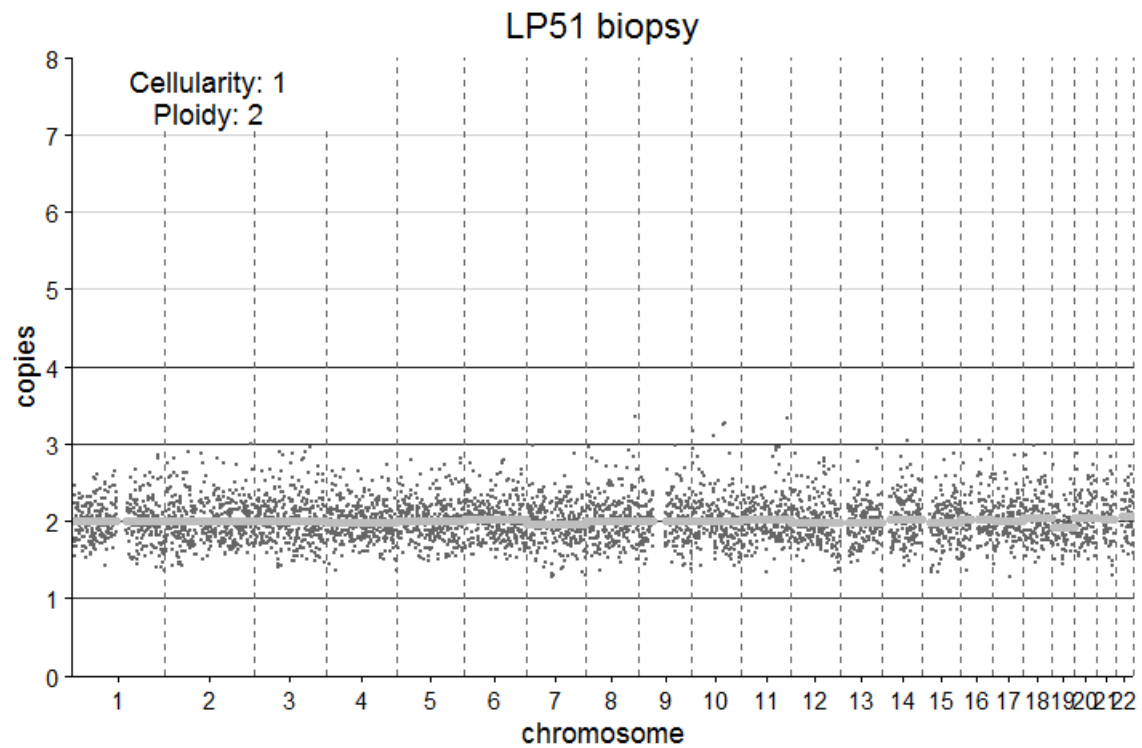
Sample	Chr	Pos	Gene	REF	ALT	read depth	ref reads	alt reads	VAF (%)	Change	Coverage			
											Sample	Mean	Max	Min
LP47-brush	chr9	139399879	NOTCH1	C	T	242	232	10	4.13	p.Cys1490Tyr	LP47-brush	315	1457	6
LP47-brush	chr9	139412289	NOTCH1	G..C	G	251	228	23	9.16	p.Glu450_Ile451del	LP47-brush	231	389	17



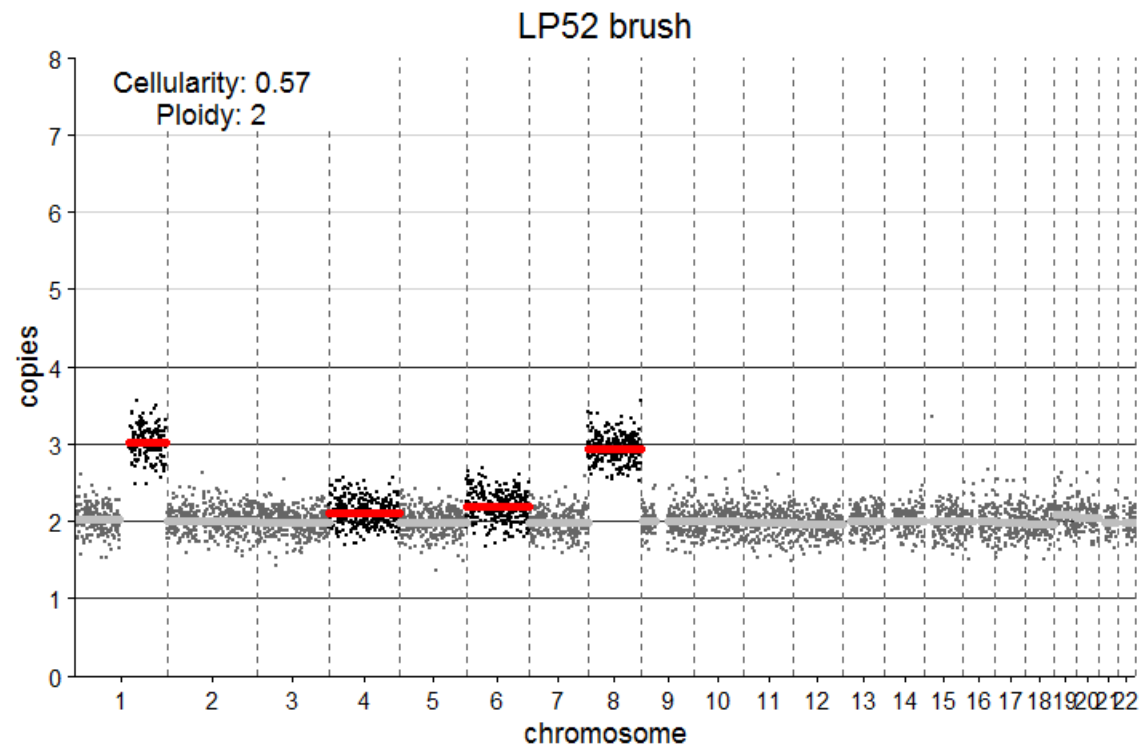
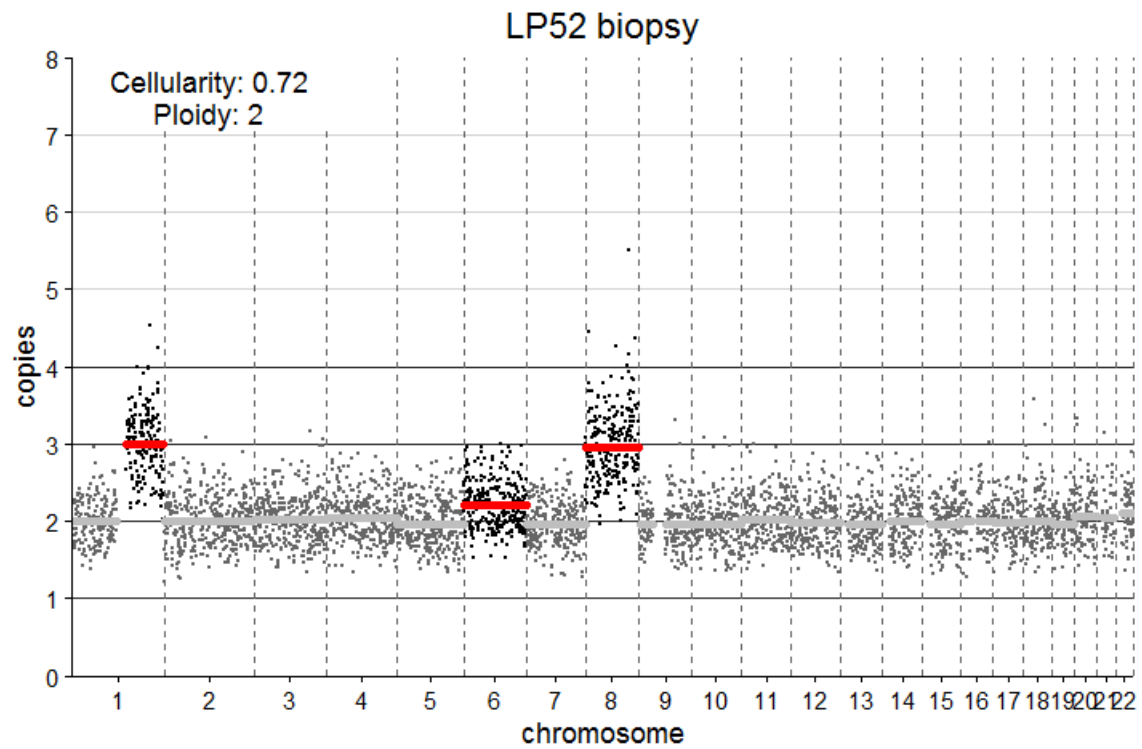
Sample	Chr	Pos	Gene	REF	ALT	read depth	ref reads	alt reads	VAF (%)	Change	Coverage			
											Sample	Mean	Max	Min
LP48-biopsy	chr3	178936094	PIK3CA	C	A	172	150	22	12.79	p.Gln546Lys	LP48-biopsy	257	952	9
											LP48-brush	639	851	46



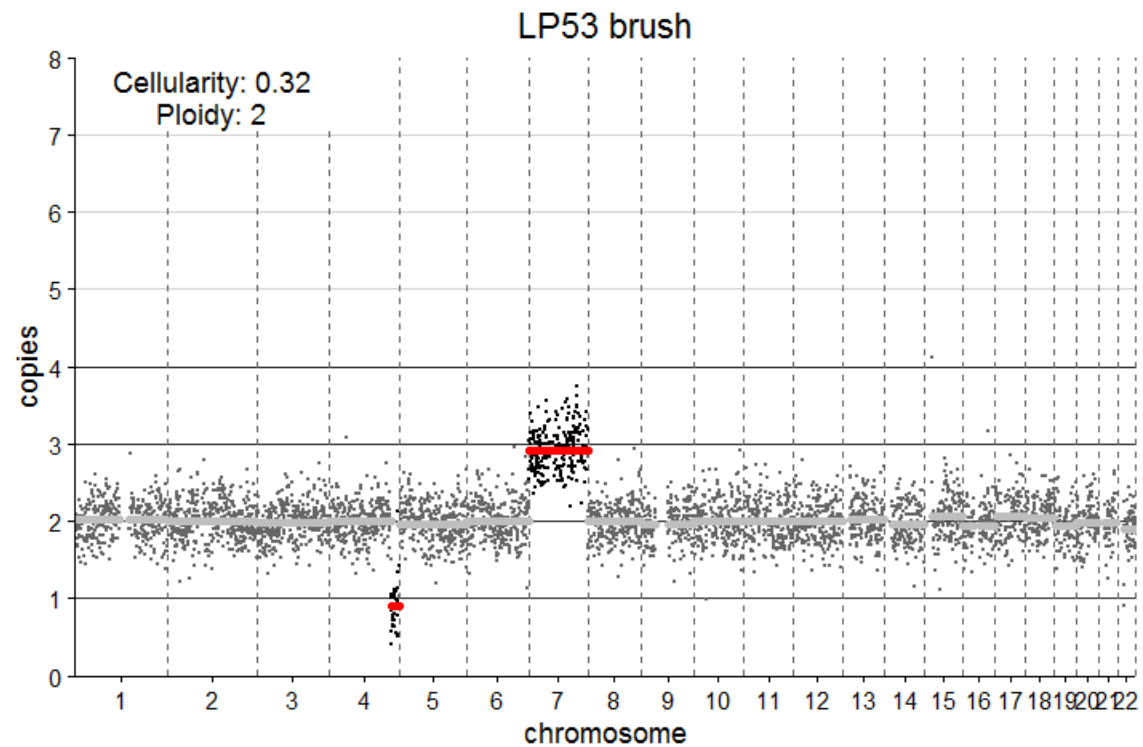
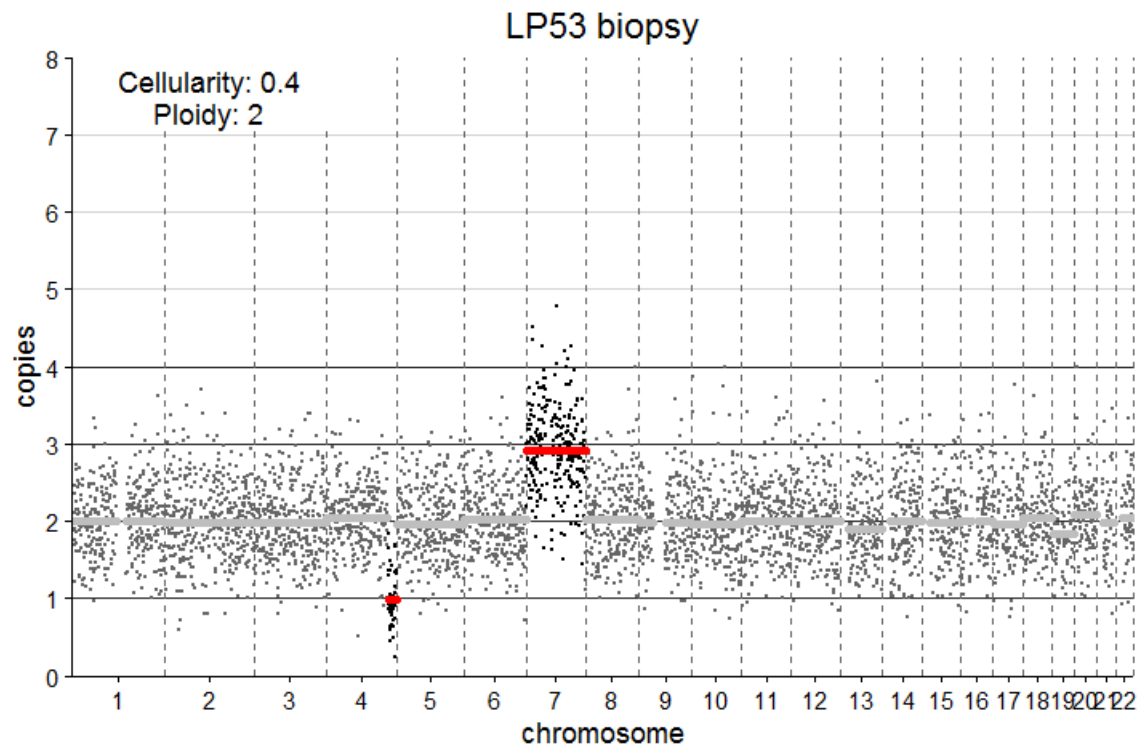
Sample	Coverage		
	Mean	Max	Min
LP49-biopsy	290	812	9
LP49-brush	186	347	18



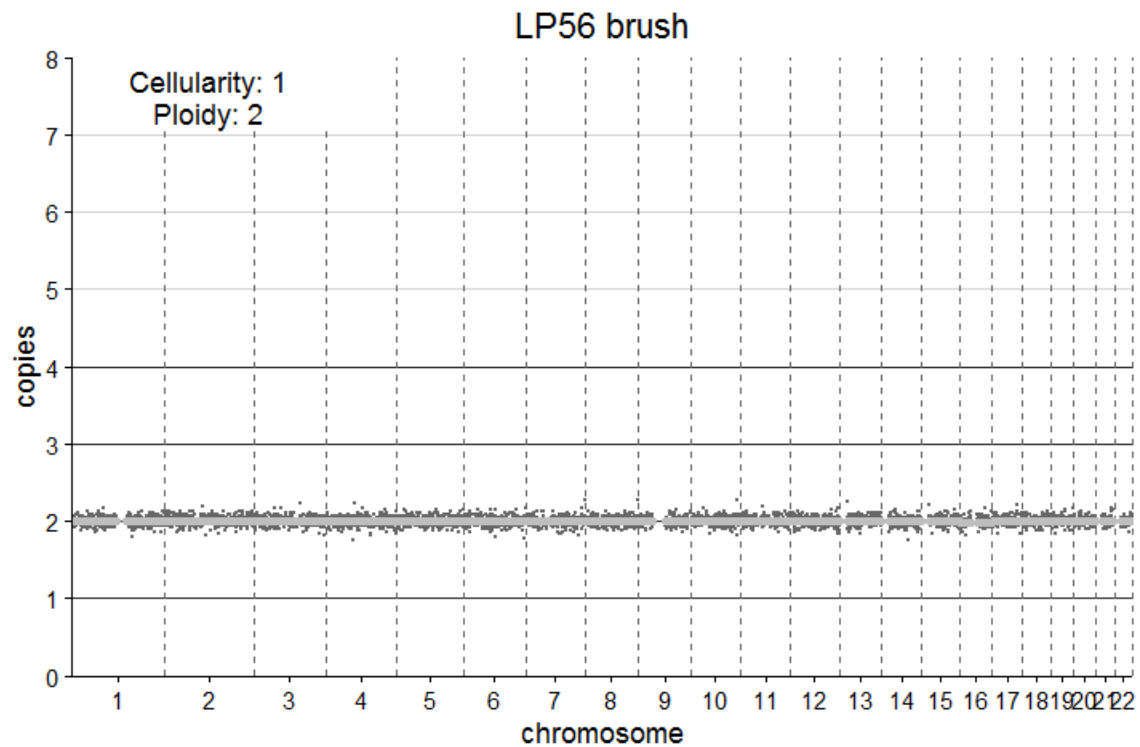
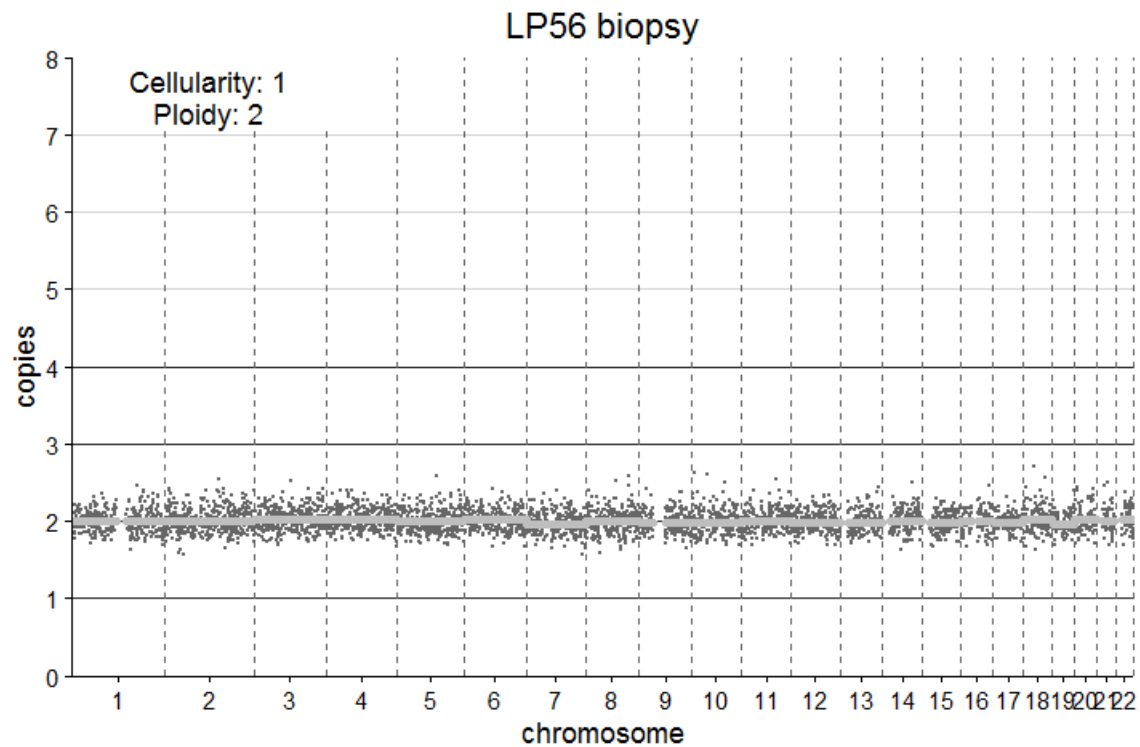
Sample	Coverage		
	Mean	Max	Min
LP51-biopsy	209	1098	5
LP51-brush	169	321	7



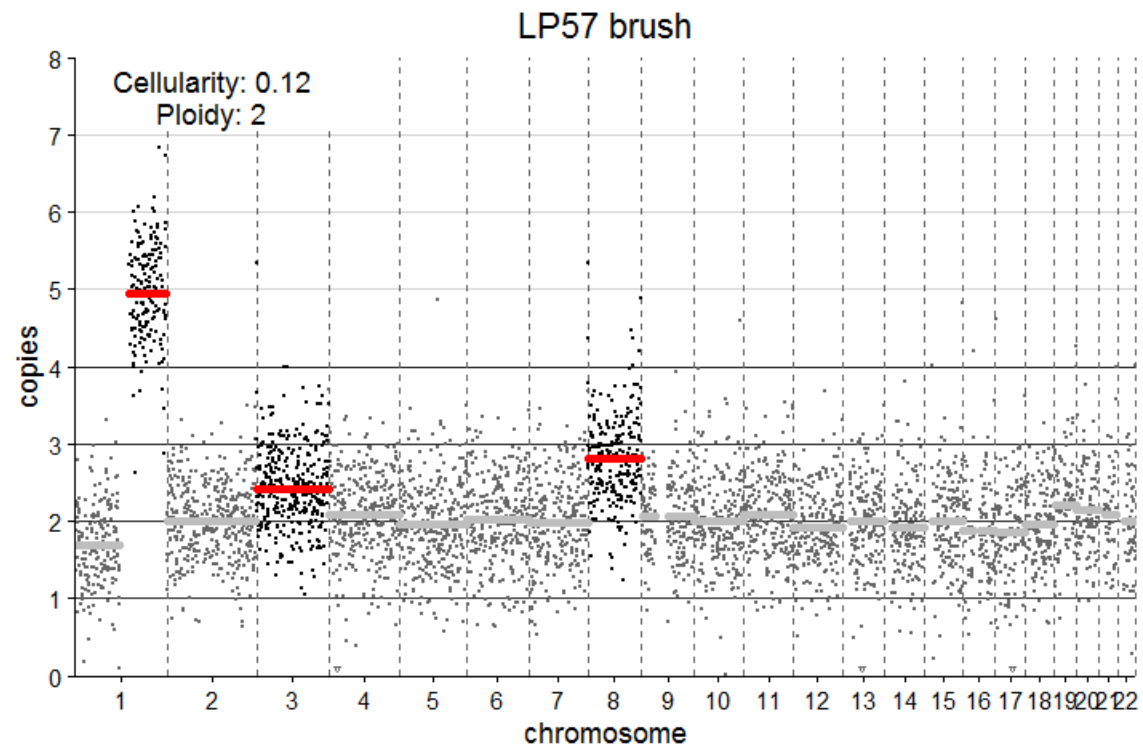
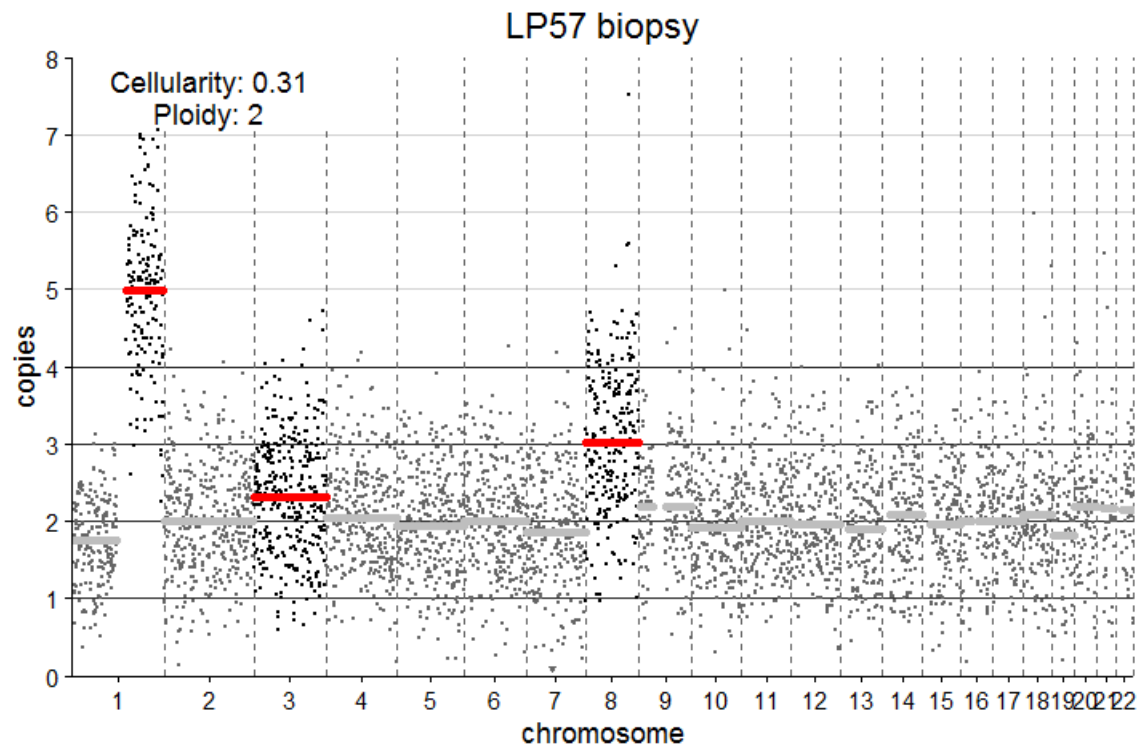
Sample	Coverage		
	Mean	Max	Min
LP52-biopsy	207	1110	6
LP52-brush	343	827	24



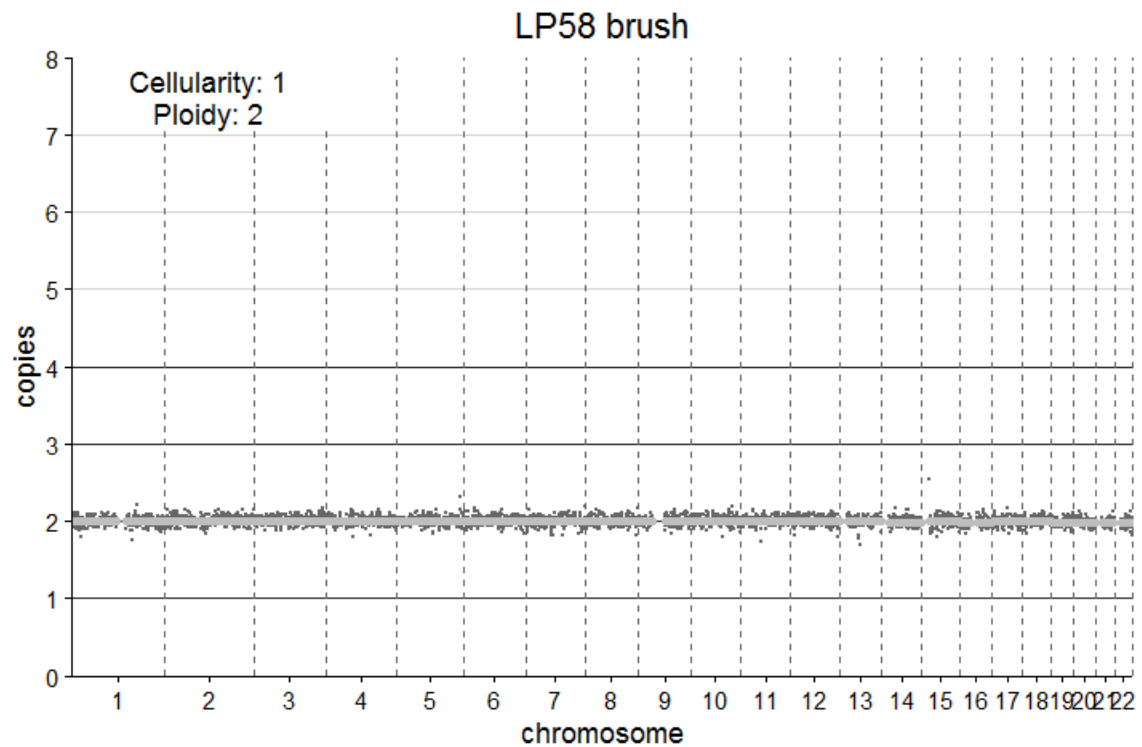
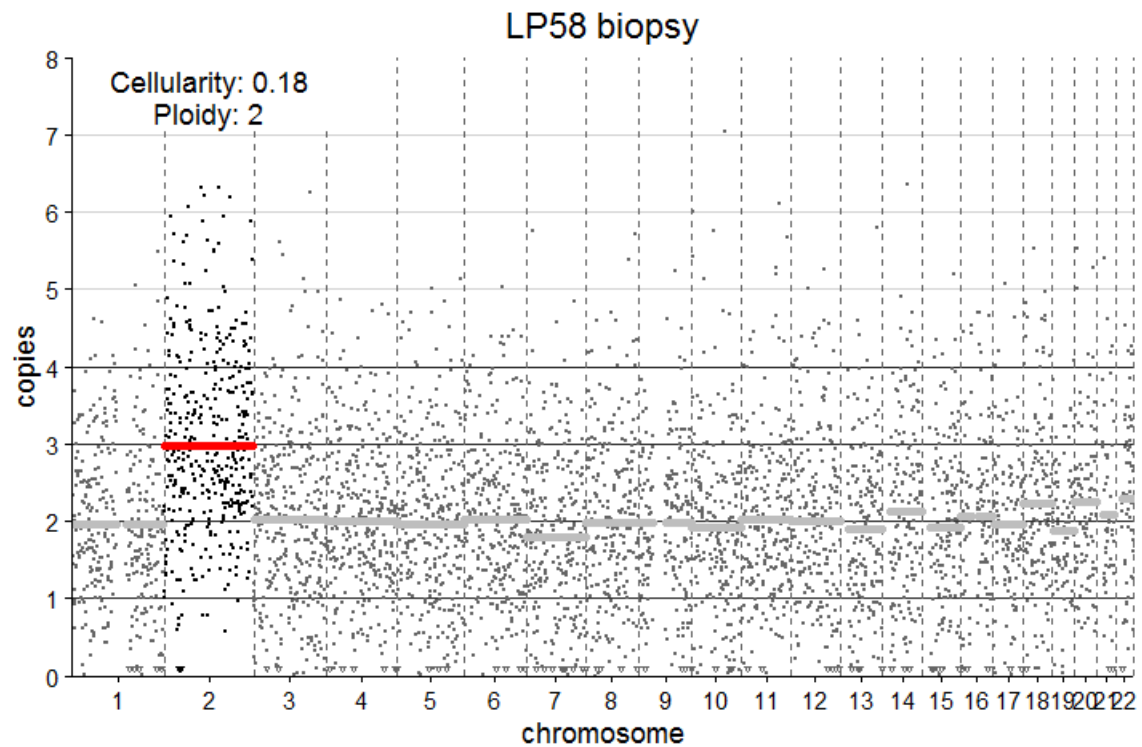
Sample	Chr	Pos	Gene	REF	ALT	read depth	ref reads	alt reads	VAF (%)	Change	Coverage			
											Sample	Mean	Max	Min
LP53-biopsy	chr12	49443530	KMT2D	C	A	140	129	11	7.86	p.Gly1281*				
LP53-biopsy	chr17	7577562	TP53	C	CTGT	183	149	34	18.58	p.Asn239dup	LP53-biopsy	132	495	1
LP53-brush	chr4	187521283	FAT1	G	A	1247	1161	86	6.9	p.Gln3958*	LP53-brush	1616	2535	192
LP53-brush	chr12	49443530	KMT2D	C	A	1669	1604	65	3.89	p.Gly1281*				
LP53-brush	chr17	7577562	TP53	C	CTGT	1765	1463	302	17.11	p.Asn239dup				



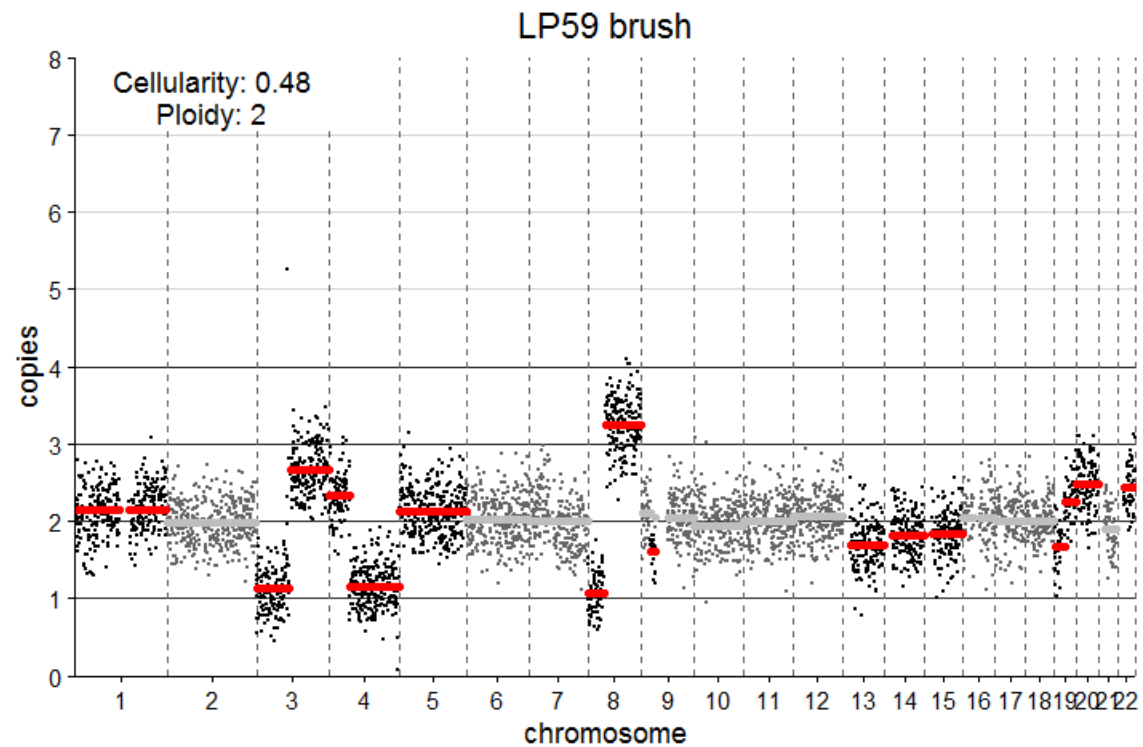
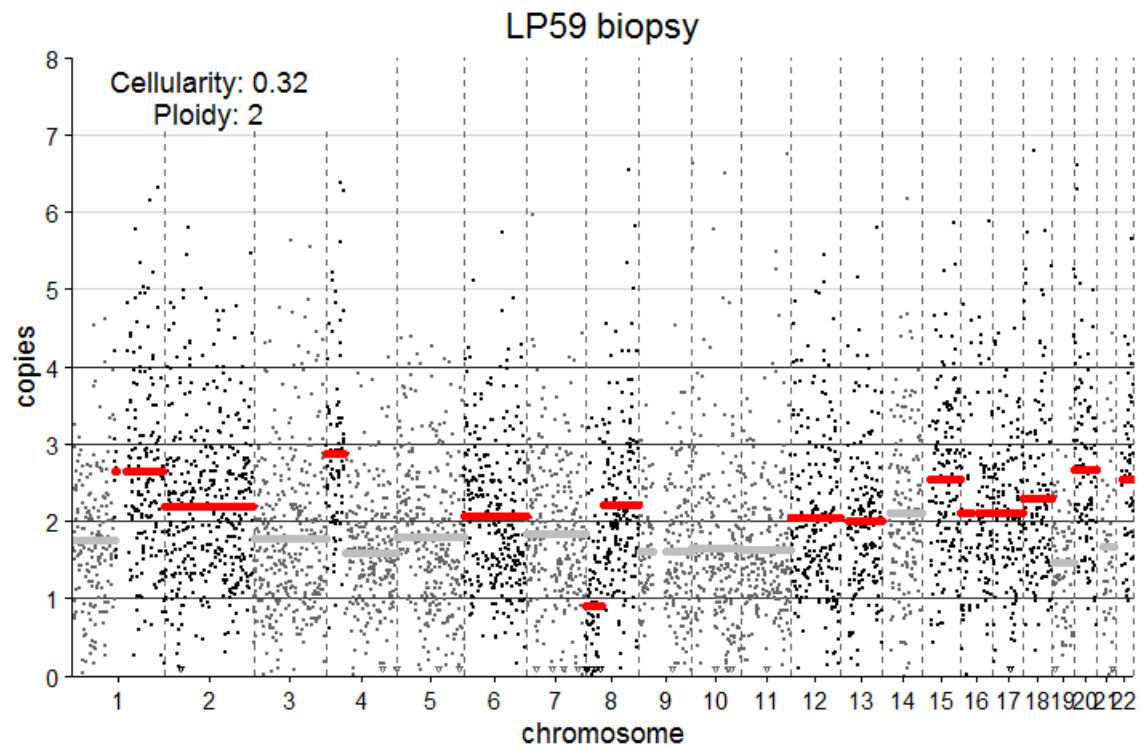
Sample	Chr	Pos	Gene	REF	ALT	read depth	ref reads	alt reads	VAF (%)	Change	Coverage			
											Sample	Mean	Max	Min
LP56-biopsy	chr9	139393419	NOTCH1	C	T	243	170	73	30.04	p.Val2038Met	LP56-biopsy	271	874	4
LP56-brush	chr9	139390944	NOTCH1	TGTG	T	64	57	7	10.94	p.Pro2415del	LP56-brush	68	378	11



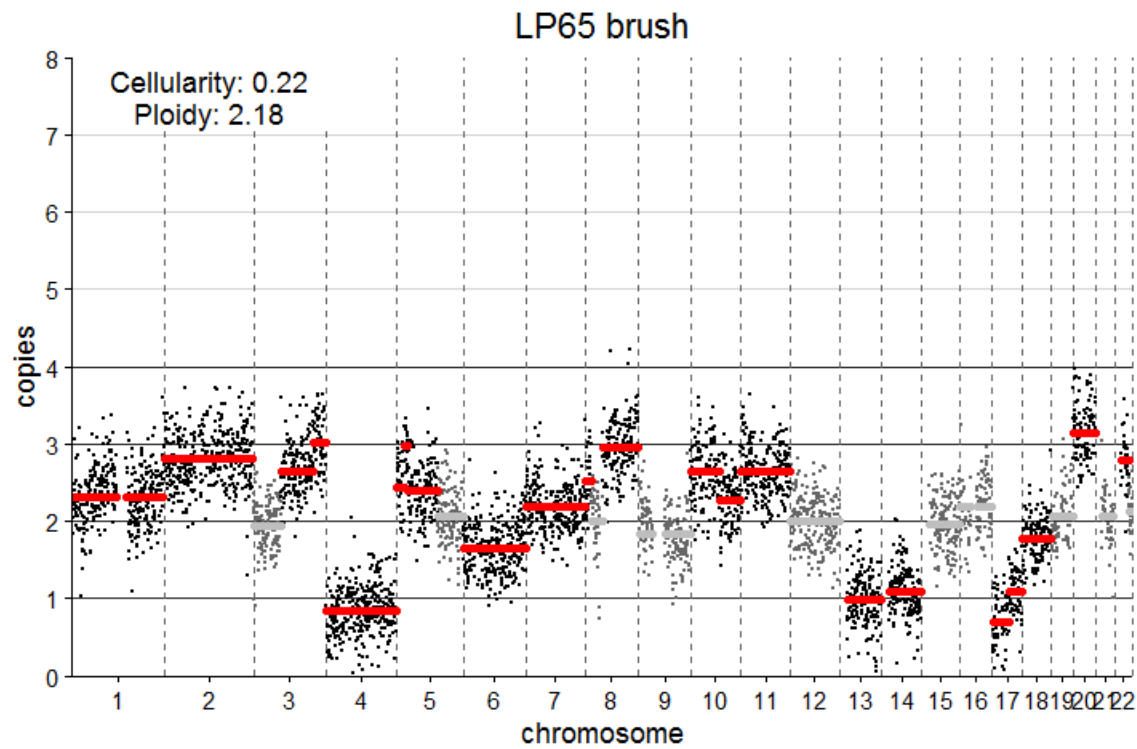
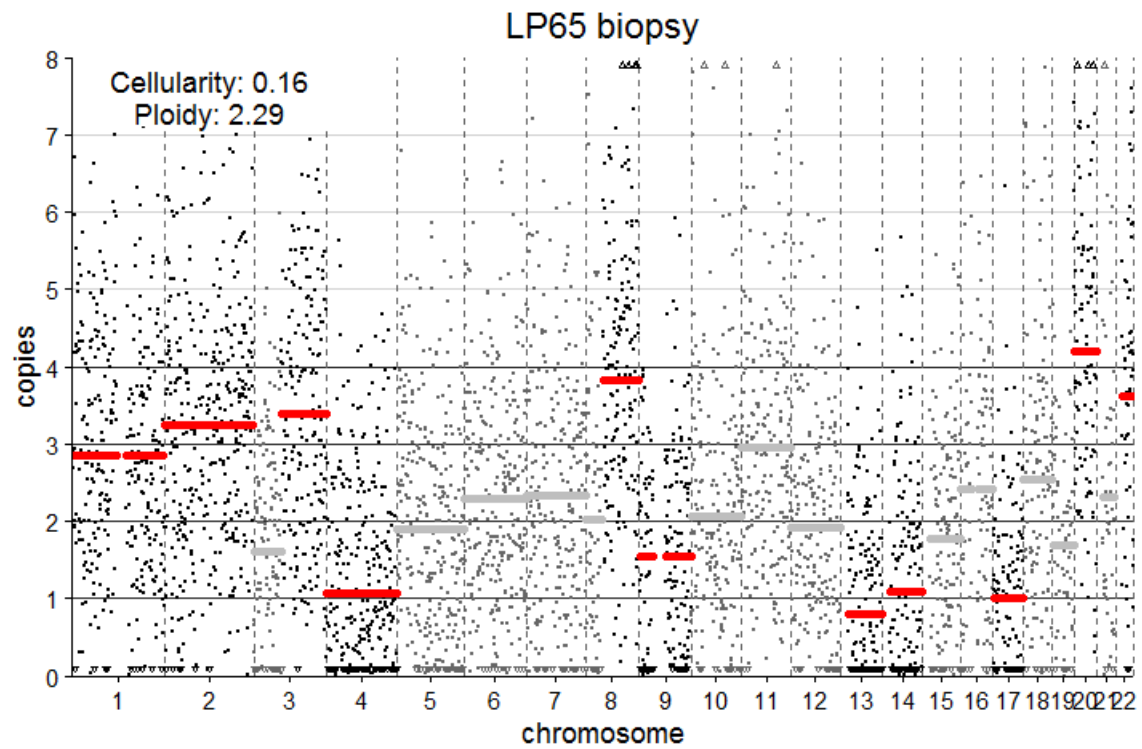
Sample	Coverage		
	Mean	Max	Min
LP57-biopsy	271	1157	6
LP57-brush	93	378	6



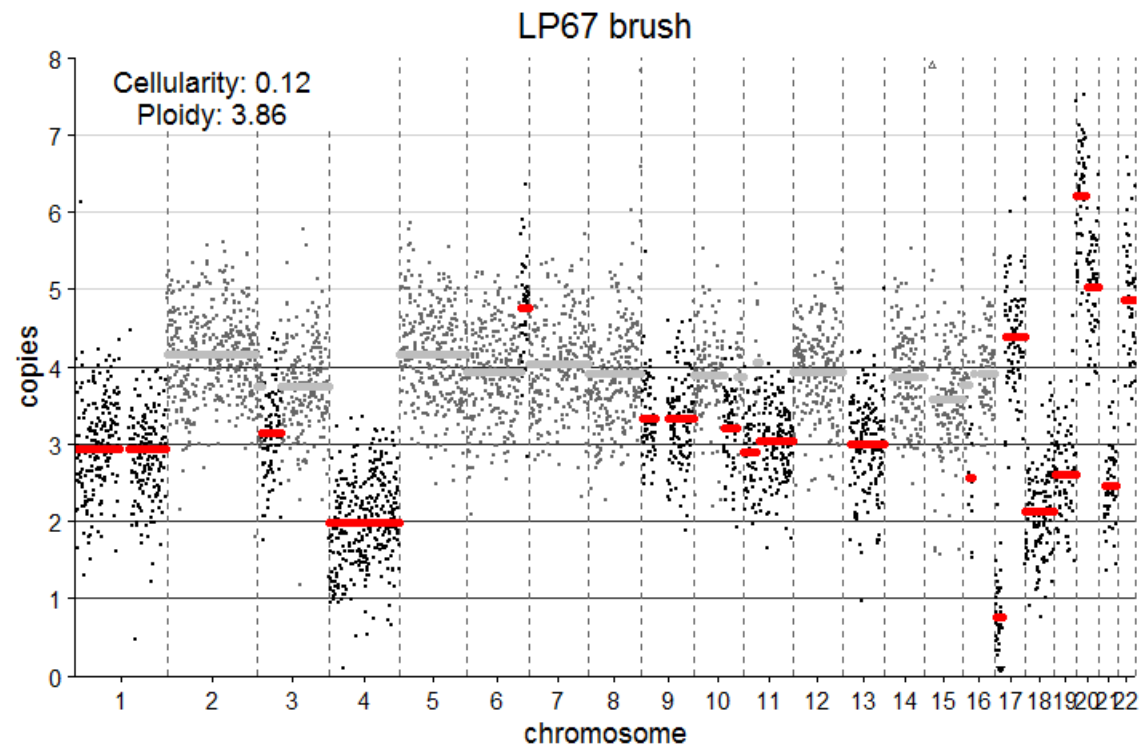
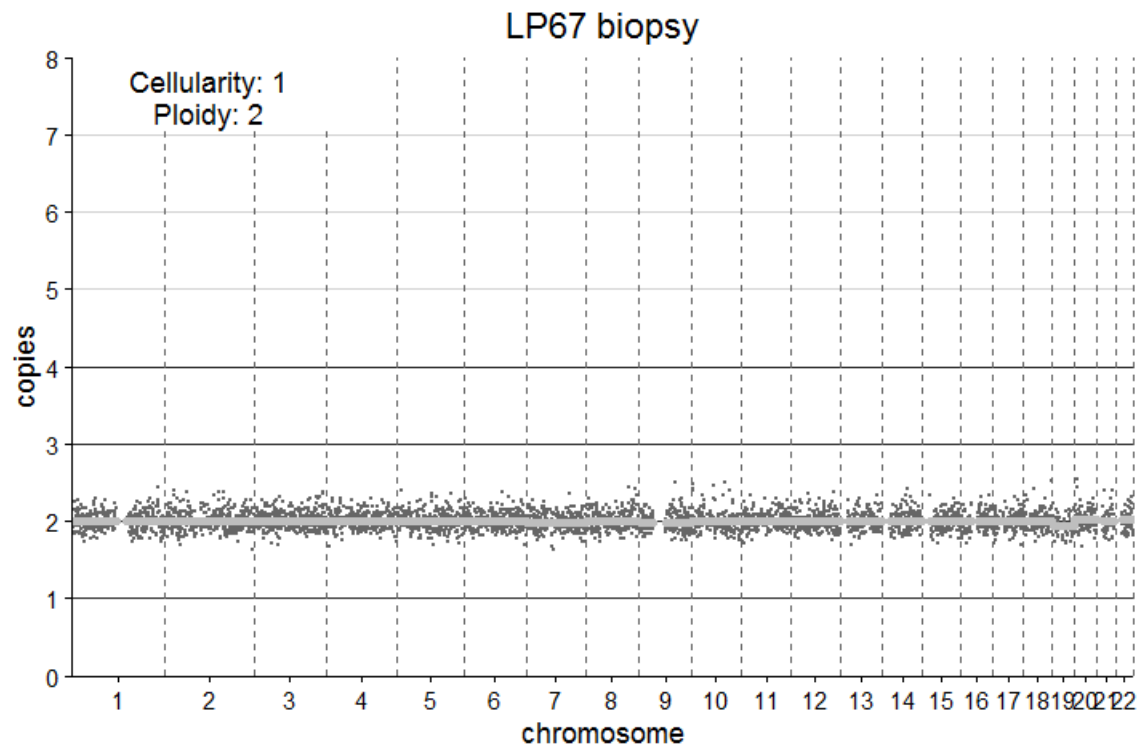
Sample	Coverage		
	Mean	Max	Min
LP58-biopsy	296	1215	10
LP58-brush	2439	3598	224



Sample	Chr	Pos	Gene	REF	ALT	read depth	ref reads	alt reads	VAF (%)	Change	Coverage			
											Sample	Mean	Max	Min
LP59-biopsy	chr9	139412332	NOTCH1	C	A	172	160	11	6.43	p.Cys438Phe	LP59-biopsy	195	1126	9
LP59-biopsy	chr9	139412628	NOTCH1	C	A	203	192	11	5.42	p.Gly406Cys				
LP59-biopsy	chr17	7577548	TP53	C	T	170	89	80	47.34	p.Gly245Ser				
LP59-brush	chr3	178936091	PIK3CA	G	A	812	702	110	13.55	p.Glu545Lys	LP59-brush	754	1574	148
LP59-brush	chr17	7577548	TP53	C	T	852	467	384	45.12	p.Gly245Ser				

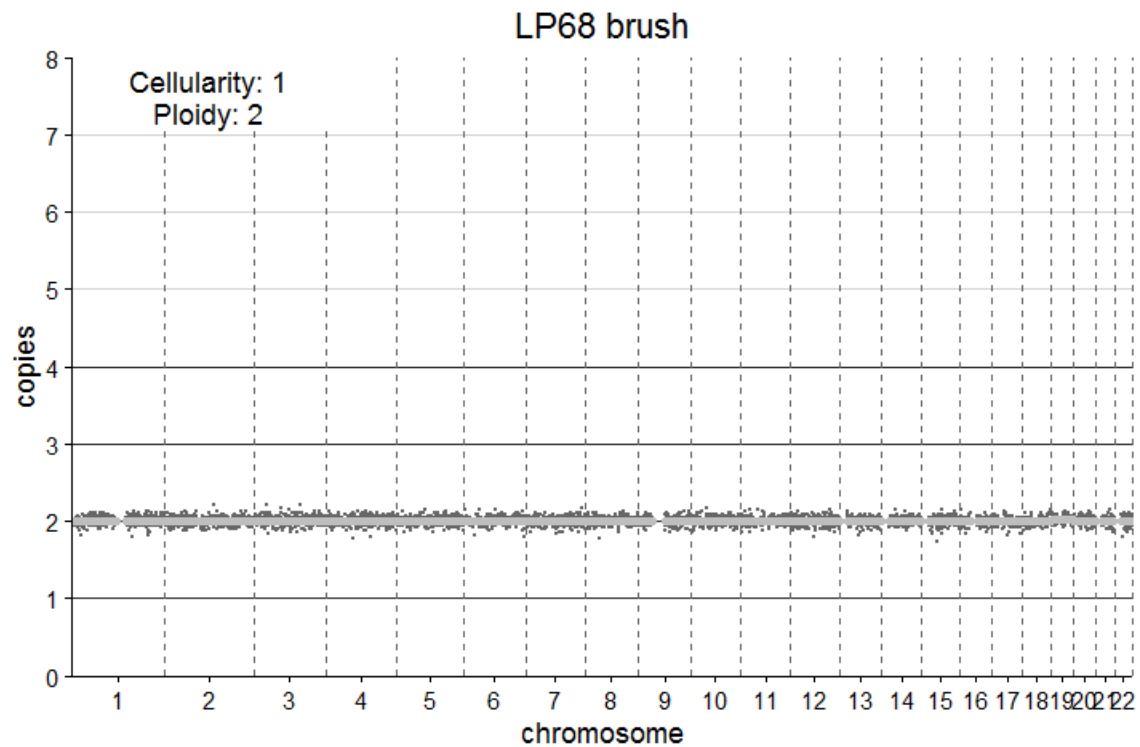
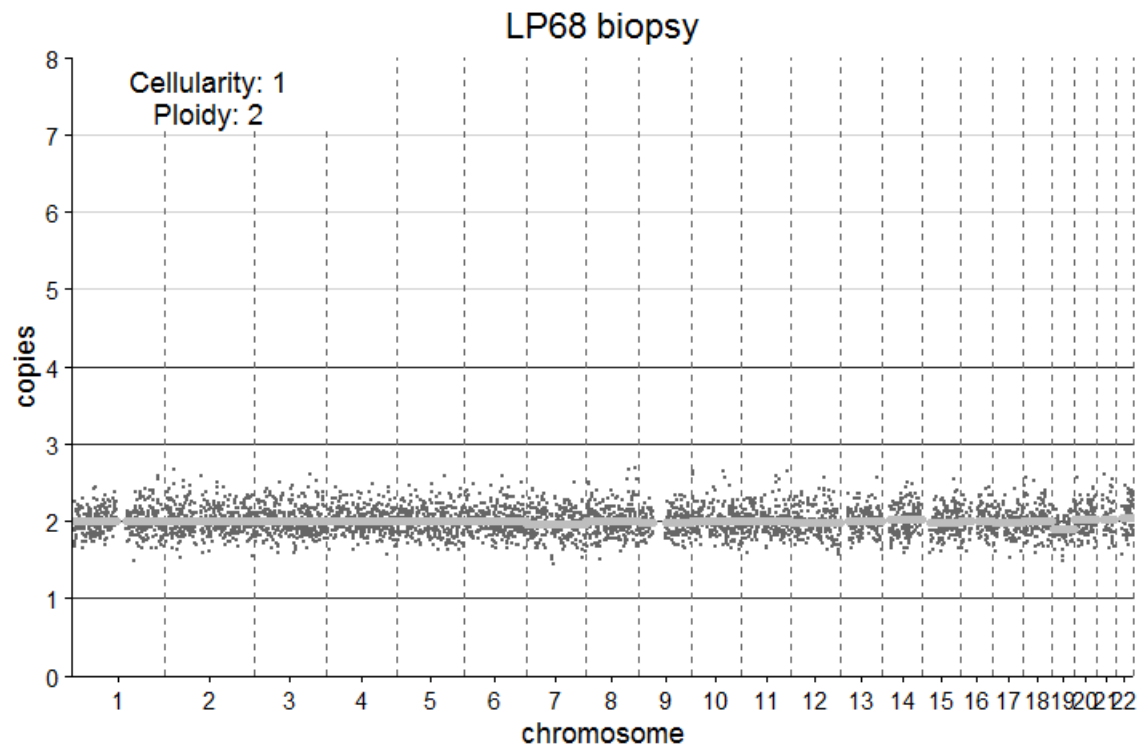


no deep sequencing data



Sample	Coverage		
	Mean	Max	Min
LP67-biopsy	614	3217	47

no deep sequencing data for brush



Sample	Chr	Pos	Gene	REF	ALT	read depth	ref reads	alt reads	VAF (%)	Change	Coverage			
											Sample	Mean	Max	Min
LP68-biopsy	chr3	178936092	PIK3CA	A	G	247	214	33	13.36	p.Glu545Gly	LP68-biopsy	254	1706	17
LP68-brush	chr3	178936092	PIK3CA	A	G	2217	2037	180	8.12	p.Glu545Gly	LP68-brush	2693	3305	101