

Figure S1. Immunohistochemical analysis of METTL3 expression in (A) GC tissues and (B) adjacent normal mucosa. (A) Gastric cancer tissues, x100; (B) Adjacent normal mucosa, x100. Scale bar, 200 μ m. METTL3, methyltransferase-like 3; GC, gastric cancer.

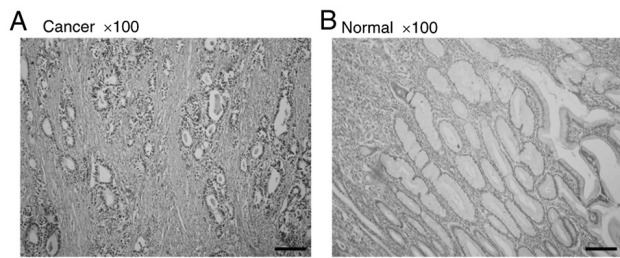


Figure S2. *In vitro* analyses of GC cell lines using different METTL3-siRNA transfection. (A) METTL3 expression was significantly suppressed by different METTL3 siRNA transfection in both MKN7 and NUGC3 cell lines. (B and C) Proliferative effects of METTL3 in GC cells at 48 and 72 h. The proliferation potential was significantly suppressed after METTL3 knockdown compared with Negative CTRL (B) MKN7 and (C) NUGC3 cells. *** $P < 0.001$, ** $P < 0.01$ vs. siMETTL3. METTL3, methyltransferase-like 3; DFS, disease-free survival; GC, gastric cancer; siMETTL3, METTL3-siRNA; Negative CTRL, negative control siRNA.

