

Table A: Summary of included samples characteristic

N	51
Age (median;IQR)	71 (59, 82)
Gender(Male)	27 (52.9%)
DM(%)	16 (31.4%)
HT(%)	41 (80.4%)
DLP(%)	34 (66.7%)
AF(%)	23 (45.1%)
Smoking(%)	12 (23.5%)
CKD(%)	2 (3.9%)
Drug(%)	2 (3.9%)
IHD(%)	8 (15.7%)
NIHSS admission (median;IQR)	12 (6, 27)
NIHSS discharge (median;IQR)	7 (0, 28)
NIHSS 3 months (median;IQR)	4 (0, 28)
MRS D/C (median;IQR)	4 (0, 5)
rtPA(%)	13 (25.5%)
Thrombectomy(%)	12 (23.5%)
Subtype(%)	
LAA(%)	15 (29.4%)
Cardioembolic(%)	23 (45.1%)
Small Vessel(%)	10 (19.6%)
Other determined(%)	1 (2%)
ESUS(%)	1 (2%)
Hemorrhagic transformation(%)	12 (23.5%)
HI1(%)	2 (3.9%)
HI2(%)	2 (3.9%)
PH1(%)	5 (9.8%)
PH2(%)	3 (5.9%)
NFL day 1 (median;IQR)	24.85 (13.96, 59.15)
NFL day 3(median;IQR)	59.63 (32.19, 99.01)

Figure A: CONSORT diagram

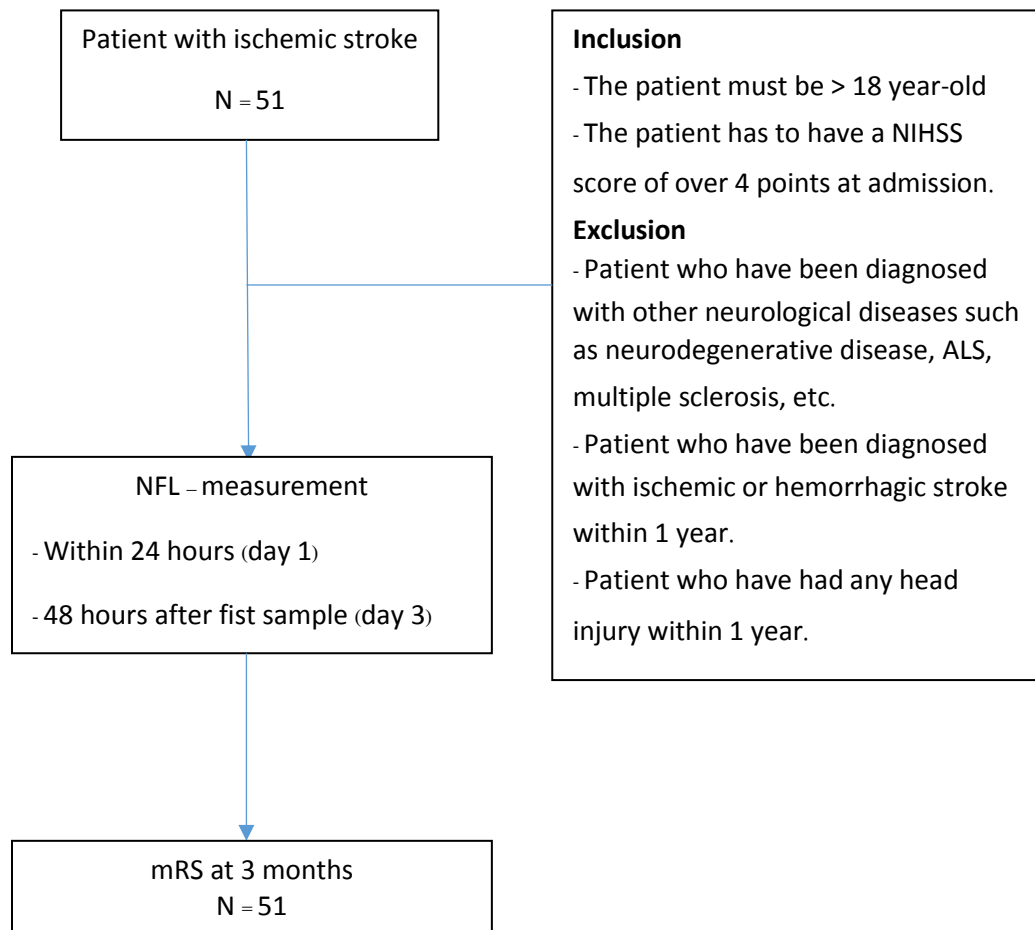


Table B: Correlation between factors and clinical outcome

MRS > 2	Correlation Efficient	P value
Age	0.22	0.121
Gender(Male)	-0.128	0.372
DM	0.197	0.166
HT	0.311	0.026
DLP	0.199	0.162
AF	0.082	0.566
Smoking	-0.123	0.392
CKD	0.162	0.255
Drug	-0.045	0.756
IHD	0.0115	0.916
NIHSS admission	0.505	< 0.001
NIHSS discharge	0.769	< 0.001
NIHSS 3 months	0.823	< 0.001
MRS D/C	0.818	< 0.001
RtPA	-0.175	0.219
Thrombectomy	-0.028	0.846
Subtype		
LAA	0.078	0.588
Cardioembolic	0.163	0.253
Small Vessel	-0.413	0.03
Other determined	0.114	0.427
ESUS	0.114	0.427
Hemorrhagic transform	0.067	0.641
HI1	-0.045	0.756
HI2	-0.045	0.756
PH1	0.130	0.364
PH2	0.030	0.834
NFL day 1	0.191	0.179
NFL day 3	0.360	0.009
$\Delta$ NFL	0.398	0.004

Table C: Univariate logistic regression model

	Odd ratio (95% CI)	P value
NFL day 1	1.012 (0.995-1.029)	0.159
<b>NFL day 3</b>	<b>1.019 (1.002-1.037)</b>	<b>0.03</b>
<b>ΔNFL</b>	<b>1.031 (1.003-1.060)</b>	<b>0.027</b>
Age	1.032 (0.988-1.077)	0.156
Sex	0.591 (0.190-1.836)	0.363
HT	5.026 (1.117-22.613)	0.35
DLP	2.352 (0.713-7.755)	0.16
AF	1.406 (0.45-4.391)	0.557
rtPA	0.446 (0.124-1.603)	0.216
Thrombectomy	0.842 (0.235-3.264)	0.842
<b>NIHSS admission</b>	<b>1.296 (1.102-1.524)</b>	<b>0.002</b>

